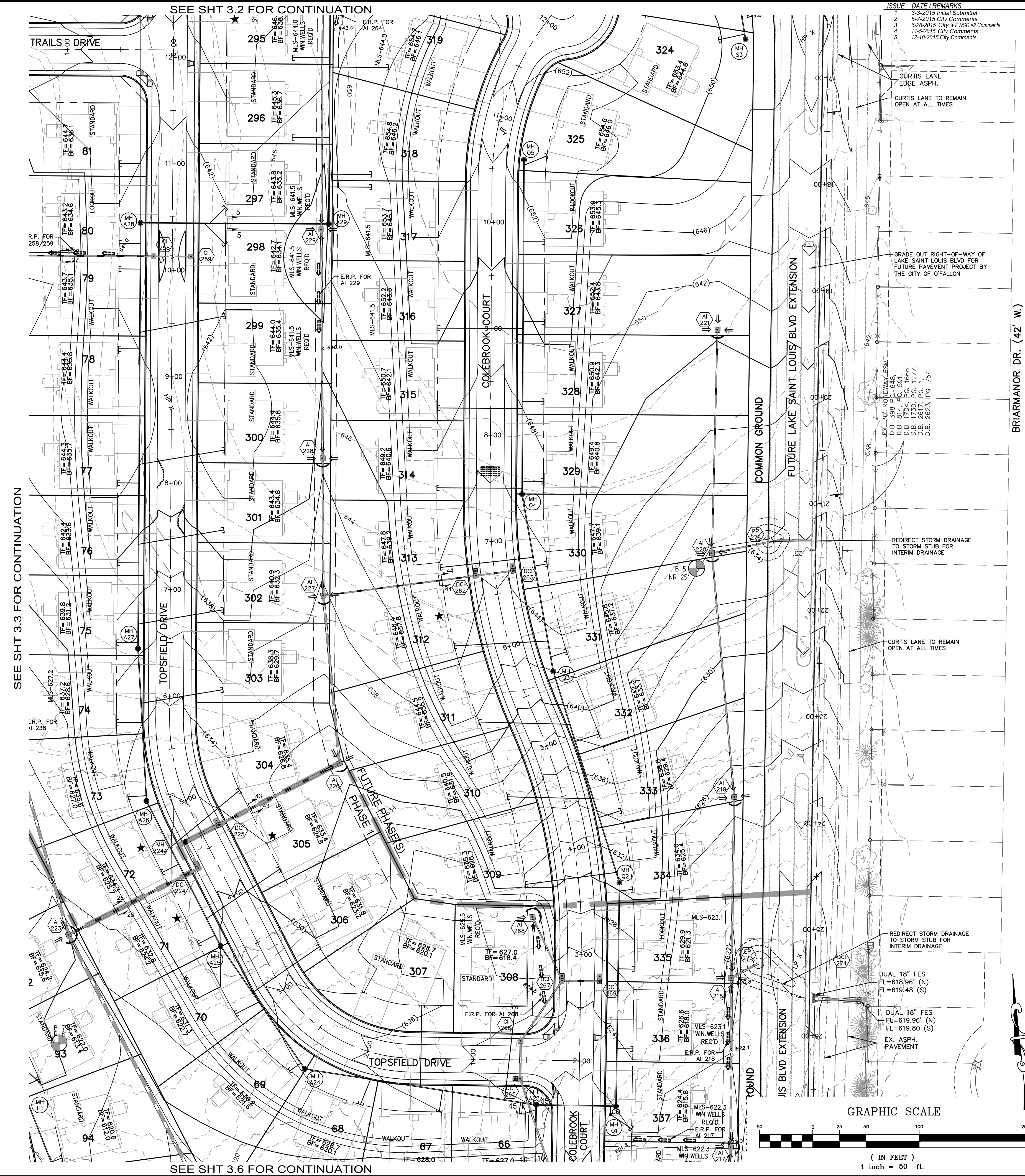


Drawing name: V:\140267 GRFF\7\Drawings\Engineering\Improvements\307\MP.dwg Plotter: on Dec 15, 2015 9:35am Plotted by: bmoeller

NOTES:

1. MLS = MINIMUM LOW SILL ELEVATION
2. ERP = EMERGENCY RELIEF PATH - SEE DTL-12
3. WINDOW WELLS REC'D - ALL BASEMENT WINDOWS ON THESE LOTS SHALL HAVE WINDOW WELLS WITH THE TOP OF WELL ELEVATION BEING HIGHER THAN THE MLS WHEN INDICATED.
4. ALL REAR YARD SWALES SHALL MAINTAIN A MINIMUM 2% SLOPE.
5. ON A CORNER LOT, NOTHING SHALL BE ERRECTED, PLACED, PLANTED OR ALLOWED TO GROW IN SUCH A MANNER AS TO MATERIALLY IMPEDE VISION BETWEEN A HEIGHT OF THREE (3) AND FIFTEEN (15) FEET ABOVE THE GRADES WITHIN THE SIGHT TRIANGLE AREA AS SHOWN ON THESE PLANS. ADDITIONALLY, NOTHING SHALL BE ERRECTED, PLACED, PLANTED OR ALLOWED TO GROW IN A MANNER TO MATERIALLY IMPEDE THE LINE OF SIGHT NECESSARY FOR SAFE TRAVEL ALONG PUBLIC ROADWAYS.
6. * - DENOTES POSSIBLE EXTENDED FOUNDATION REQUIRED FOR HOUSE DUE TO SEWER ZONE OF INFLUENCE SEE SHEETS 14.1-14.3 FOR ADDITIONAL INFORMATION.



PROJECT TITLE

The Villages at Shady Creek

OFFALLON, MISSOURI

THE STERLING CO.
ENGINEERS & SURVEYORS

5055 New Baumgardner Road
St. Louis, Missouri 63129
Ph 314-487-0440 Fax 314-487-8944
www.sterling-eng-sur.com
Corporate Certificate of Authority #001348

STATE OF MISSOURI
RODNEY ARNOLD
LICENSE # PE-2002016612
Professional Engineer

Date: 12/10/2015
RODNEY ARNOLD
LICENSE # PE-2002016612
Civil Engineer

Lombardo Homes of St. Louis, LLC

2299 Technology Drive, Suite 150
Offallon, Missouri 63368
Ph. (636) 265-2710
Fax (636) 695-3195
www.lombardohomesstlouis.com

GRADING PLAN

P+Z No. P&Z NO
City No. 15-162-SP
Date: 12/10/2015
Job No. 14-03-087

Page No. **3.4**

IMP