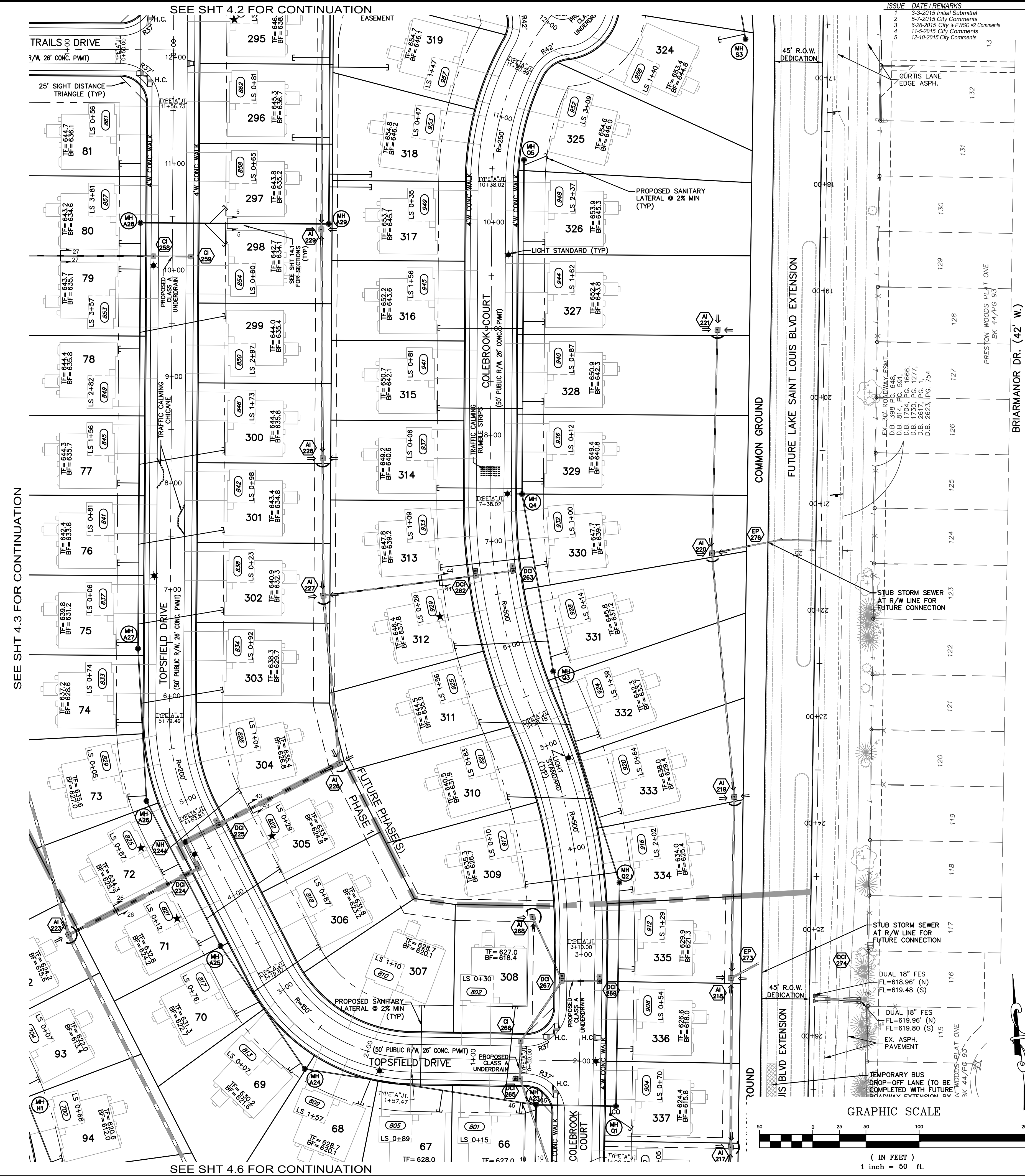


Drawing name: V:\140387-GRF\140387-Drawings\Improvements\140387-IMP.dwg Plotter: 01/15/2015 09:37am Plotted by: bmoeller

SIGHT DISTANCE NOTE:
ON A CORNER LOT, NOTHING SHALL BE ERRECTED, PLACED, PLANTED OR ALLOWED TO GROW IN SUCH A MANNER AS TO MATERIALLY IMPEDE VISION BETWEEN A HEIGHT OF THREE (3) AND FIFTEEN (15) FEET ABOVE THE GRADES WITHIN THE SIGHT TRIANGLE AREA AS SHOWN ON THESE PLANS. ADDITIONALLY, NOTHING SHALL BE ERRECTED, PLACED, PLANTED OR ALLOWED TO GROW IN A MANNER TO MATERIALLY IMPEDE THE LINE OF SIGHT NECESSARY FOR SAFE TRAVEL ALONG PUBLIC ROADWAYS.

ZONE OF INFLUENCE NOTE:
* - DENOTES POSSIBLE EXTENDED FOUNDATION REQUIRED FOR HOUSE DUE TO SEWER ZONE OF INFLUENCE SEE SHEETS 14.1-14.3 FOR ADDITIONAL INFORMATION.

FENCE NOTE:
ANY FENCE THAT ABUTS PAUL RENAUD BLVD OR LAKE SAINT LOUIS BLVD SHALL BE IDENTICAL IN SIZE, TYPE AND COLOR IN ORDER TO MAINTAIN A COHESIVE APPEARANCE.



PROJECT TITLE
The Villages at Shady Creek
OFFALON, MISSOURI

THE STERLING CO.
ENGINEERS & SURVEYORS
5055 New Baumgartner Road
St. Louis, Missouri 63129
Ph 314-487-0440 Fax 314-487-8944
www.sterling-eng-sur.com
Corporate Certificate of Authority #001348

Date: 12/10/2015
RODNEY ARNOLD
LICENSE # PE-2002016612
Civil Engineer

Lombardo Homes of St. Louis, LLC
2299 Technology Drive, Suite 150
Offalton, Missouri 63368
Ph. (636) 265-2710
Fax (636) 695-3195
www.lombardohomesstlouis.com

P+Z No. P&Z NO
City No. 15-162-SP
Date: 12/10/2015
Job No. 14-03-087
Page No.

4.4 IMP