

ISSUE	DATE / REMARKS
1	3-3-2015 Initial Submittal
2	5-7-2015 City Comments
3	6-26-2015 City & PWSD #2 Comments
4	11-9-2015 City Comments
5	12-10-2015 City Comments

General Notes:

1. ALL UTILITIES AND CONDUIT FOR UTILITIES SHALL BE PLACED A MINIMUM OF THREE (3) FEET BELOW THE PAVEMENT.
2. ALL STREET LIGHTS SHALL BE CONNECTED INDIVIDUALLY TO THE POWER SOURCE. IN EXTREME CASES, TWO (2) STREET LIGHTS MAY BE CONNECTED IN PARALLEL TO THE POWER SOURCE. ALL CONDUIT FOR STREET LIGHTS SHALL BE PLACED WITHIN UTILITY EASEMENTS AND DEDICATED FOR EXCLUSIVE USE TO THE CITY OF FALLON.

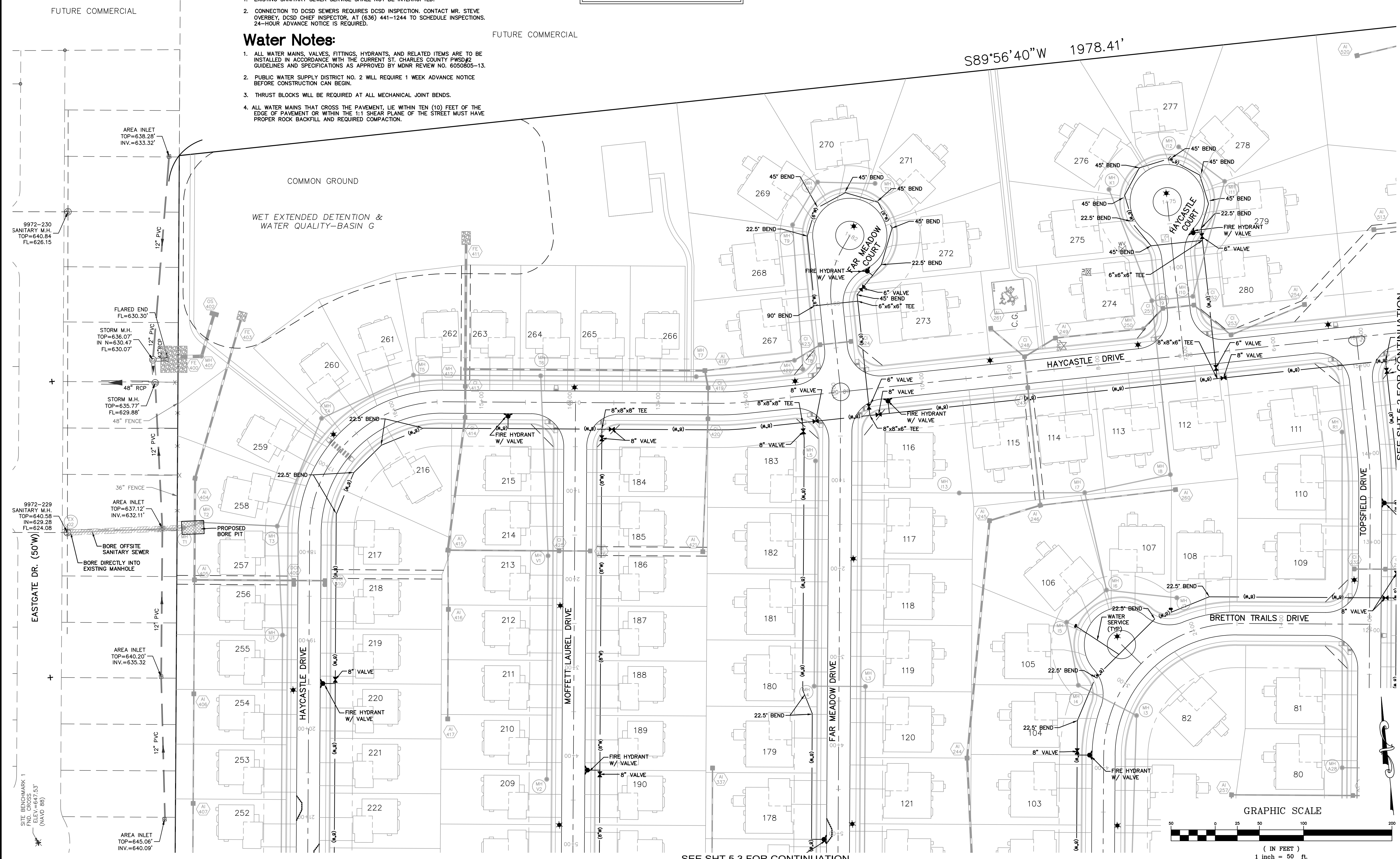
Sanitary Sewer Notes:

1. EXISTING SANITARY SEWER SERVICE SHALL NOT BE INTERRUPTED.
2. CONNECTION TO DCSD SEWERS REQUIRES DCSD INSPECTION. CONTACT MR. STEVE OVERBEY, DCSD CHIEF INSPECTOR, AT (636) 441-1244 TO SCHEDULE INSPECTIONS. 24-HOUR ADVANCE NOTICE IS REQUIRED.

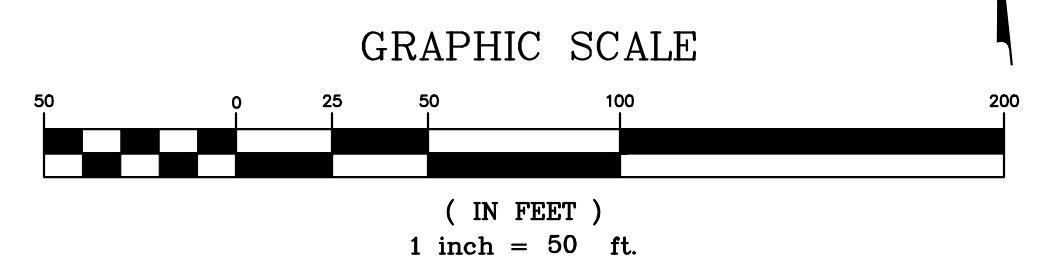
Water Notes:

1. ALL WATER MAINS, VALVES, FITTINGS, HYDRANTS, AND RELATED ITEMS ARE TO BE INSTALLED IN ACCORDANCE WITH THE CURRENT ST. CHARLES COUNTY PWSD #2 GUIDELINES AND SPECIFICATIONS AS APPROVED BY MDNR REVIEW NO. 6050805-13.
2. PUBLIC WATER SUPPLY DISTRICT NO. 2 WILL REQUIRE 1 WEEK ADVANCE NOTICE BEFORE CONSTRUCTION CAN BEGIN.
3. THRUST BLOCKS WILL BE REQUIRED AT ALL MECHANICAL JOINT BENDS.
4. ALL WATER MAINS THAT CROSS THE PAVEMENT, LIE WITHIN TEN (10) FEET OF THE EDGE OF PAVEMENT OR WITHIN THE 1:1 SHEAR PLANE OF THE STREET MUST HAVE PROPER ROCK BACKFILL AND REQUIRED COMPACTION.

SIGHT DISTANCE NOTE:
ON A CORNER LOT, NOTHING SHALL BE ERRECTED, PLACED, PLANTED OR ALLOWED TO GROW IN SUCH A MANNER AS TO MATERIALLY IMPEDE VISION BETWEEN A HEIGHT OF THREE (3) AND FIFTEEN (15) FEET ABOVE THE GRADES WITHIN THE SIGHT TRIANGLE AREA AS SHOWN ON THESE PLANS. ADDITIONALLY, NOTHING SHALL BE ERRECTED, PLACED, PLANTED OR ALLOWED TO GROW IN A MANNER TO MATERIALLY IMPEDE THE LINE OF SIGHT NECESSARY FOR SAFE TRAVEL ALONG PUBLIC ROADWAYS.



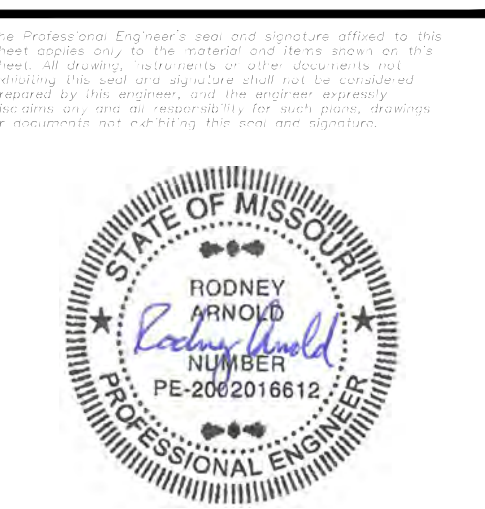
SEE SHT 5.3 FOR CONTINUATION



PROJECT TITLE

The Villages at
Shady Creek
OF FALLON, MISSOURI

THE STERLING CO.
ENGINEERS & SURVEYORS
5055 New Baumgartner Road
St. Louis, Missouri 63129
Ph 314-487-0440 Fax 314-487-8944
www.sterling-eng-sur.com
Corporate Certificate of Authority #001348



Date: 12/10/2015
RODNEY ARNOLD
LICENSE # PE-2002016612
Civil Engineer

Lombardo Homes of St. Louis, LLC
2299 Technology Drive, Suite 150
OF Fallon, Missouri 63368
Ph. (636) 265-2710
Fax (636) 695-3195
www.lombardohomesstlouis.com

P+Z No. P&Z NO
City No. 15-162-SP
Date: 12/10/2015
Job No. 14-03-087

Page No.
5.1
IMP

UTILITY PLAN