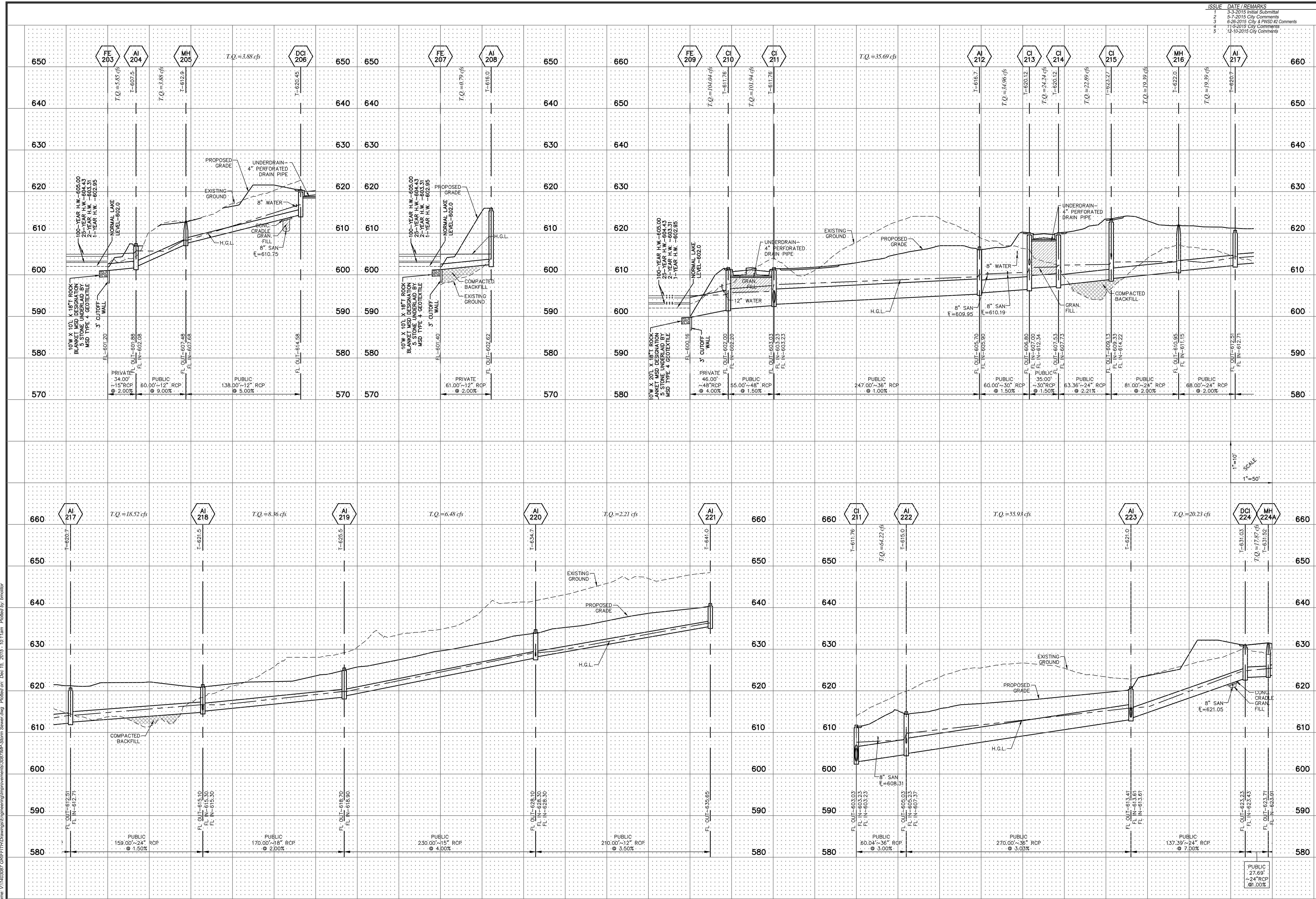


Drawing name: V:\42387\_GolfF77\Drawings\Improvements\3077\SP-Storm Sewer.dwg Plotter on: Dec 15, 2015 - 10:11am Plotted by: emad@r



ISSUE	DATE / REMARKS
1	3-3-2015 Initial Submittal
2	5-7-2015 City Comments
3	6-26-2015 City & PWSO #2 Comments
4	7-9-2015 City Comments
5	10-16-2015 City Comments

PROJECT TITLE

*The Villages at  
Shady Creek*

OFFALON, MISSOURI

**THE STERLING CO.**  
ENGINEERS & SURVEYORS

5055 New Baumgartner Road  
St. Louis, Missouri 63129  
Ph 314-487-0440 Fax 314-487-8944  
www.sterling-eng-sur.com  
Corporate Certificate of Authority #001348



Date: 12/10/2015  
RODNEY ARNOLD  
LICENSE # PE-2002016612  
Civil Engineer

*Lombardo Homes of St. Louis, LLC*

2299 Technology Drive, Suite 150  
Offalton, Missouri 63368  
Ph. (636) 265-2710  
Fax (636) 695-3195  
www.lombardohomesstlouis.com

STORM PROFILES

P+Z No. P&Z NO  
City No. 15-162-SP  
Date: 12/10/2015  
Job No. 14-03-087

Page No.  
**8.5**

IMP