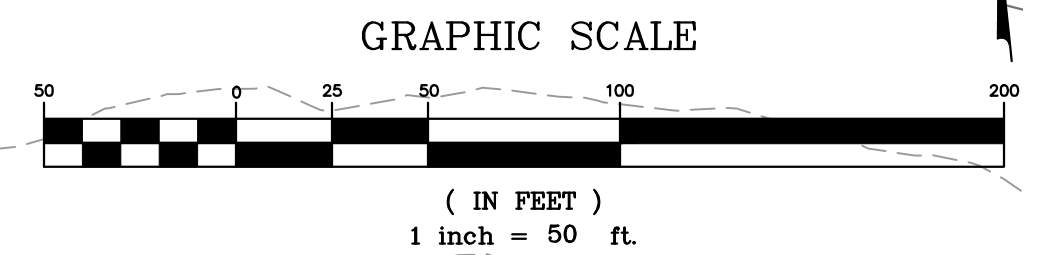


ISSUE	DATE / REMARKS
1	3-3-2015 Initial Submittal
2	5-7-2015 City Comments
3	6-26-2015 City & PWSD #2 Comments
4	11-9-2015 City Comments
5	12-10-2015 City Comments

SEE SHEETS 9.4 AND 9.6 FOR DRAINAGE AREA INFORMATION

THIS DOCUMENT IS FOR DRAINAGE AREA PURPOSES ONLY!
NOT FOR CONSTRUCTION!



PROJECT TITLE

The Villages at Shady Creek

OFFALLON, MISSOURI

THE **STERLING** CO.
ENGINEERS & SURVEYORS

5055 New Baumgartner Road
St. Louis, Missouri 63129
Ph 314-487-0440 Fax 314-487-8944
www.sterling-eng-sur.com
Corporate Certificate of Authority #001348



Date: 12/10/2015
RODNEY ARNOLD
LICENSE # PE-2002016612
Civil Engineer

Lombardo Homes of St. Louis, LLC
2299 Technology Drive, Suite 150
OFallon, Missouri 63368
Ph: (636) 265-2710
Fax: (636) 695-3195
www.lombardohomesstlouis.com

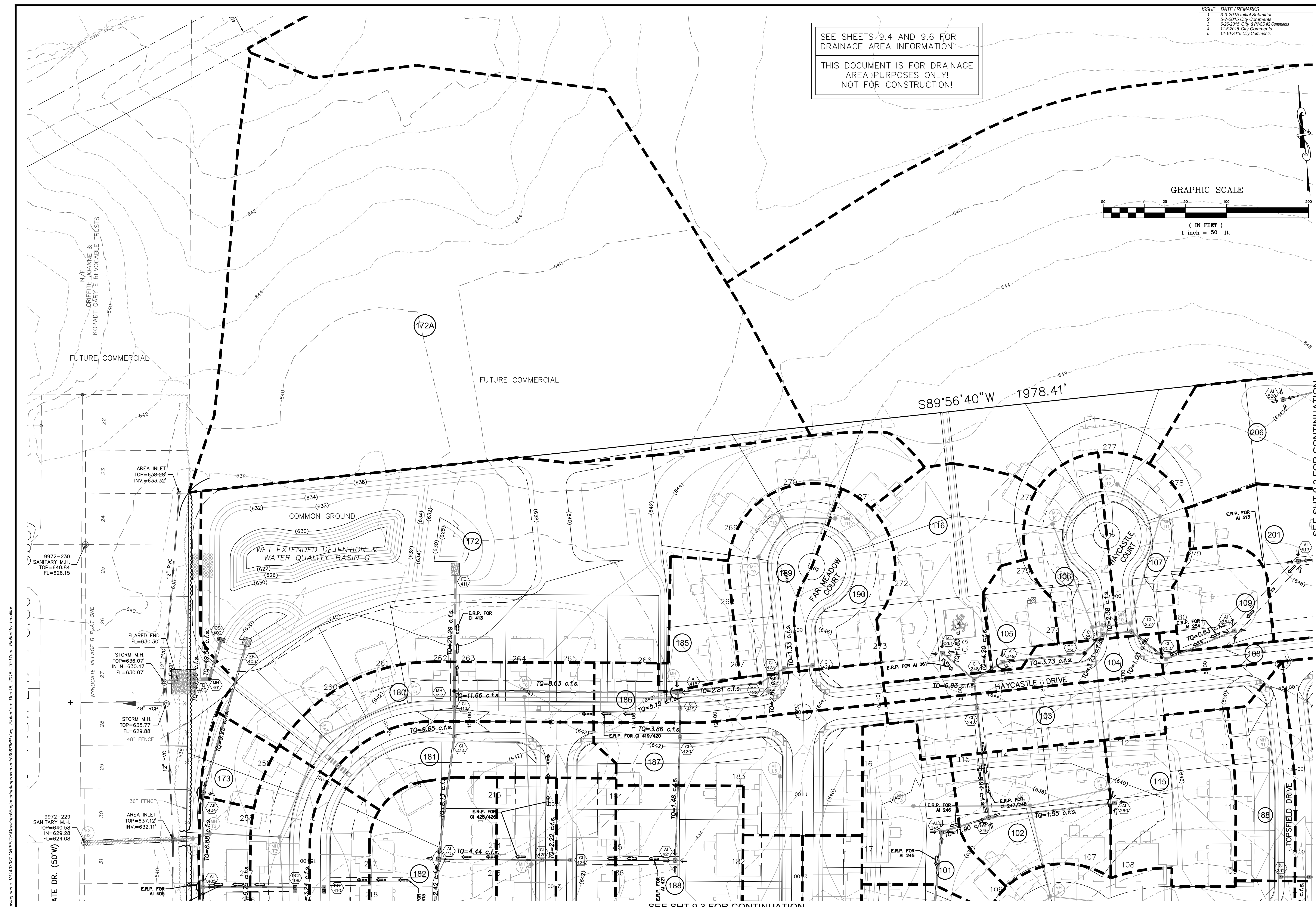
DRAINAGE AREA MAP

P+Z No. P&Z NO
City No. 15-162-SP
Date: 12/10/2015
Job No. 14-03-087

Page No.

9.1

IMP



Drawing name: V1410287-GriffithJoanne&KopadyGaryE_RevocableTrusts.dwg Plotter on: Dec 15, 2015 - 10:17am Plotted by: jmolitor