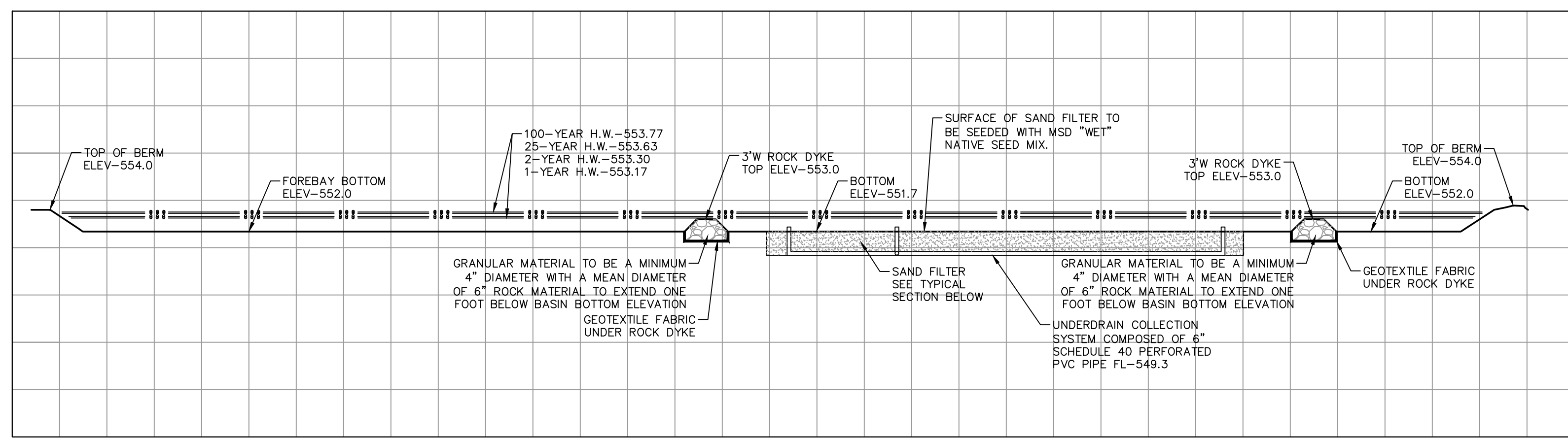
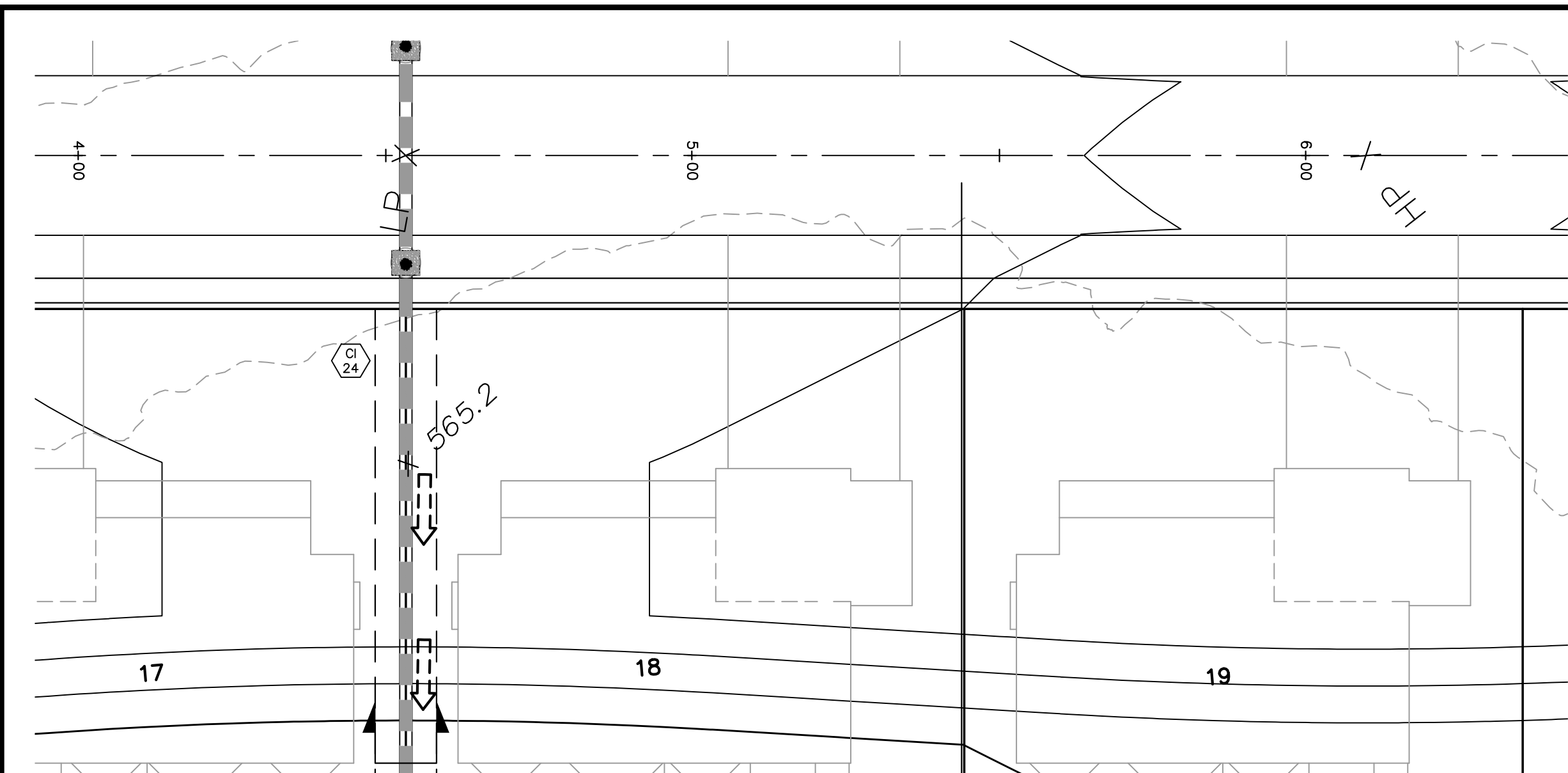
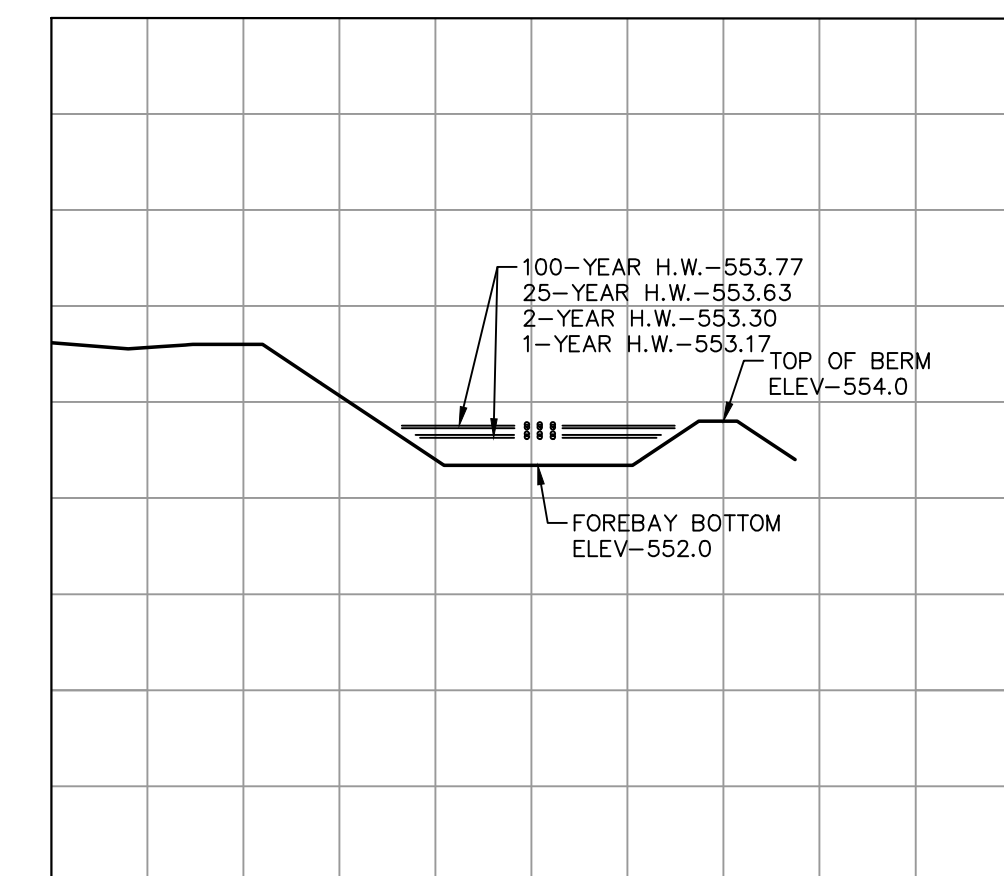
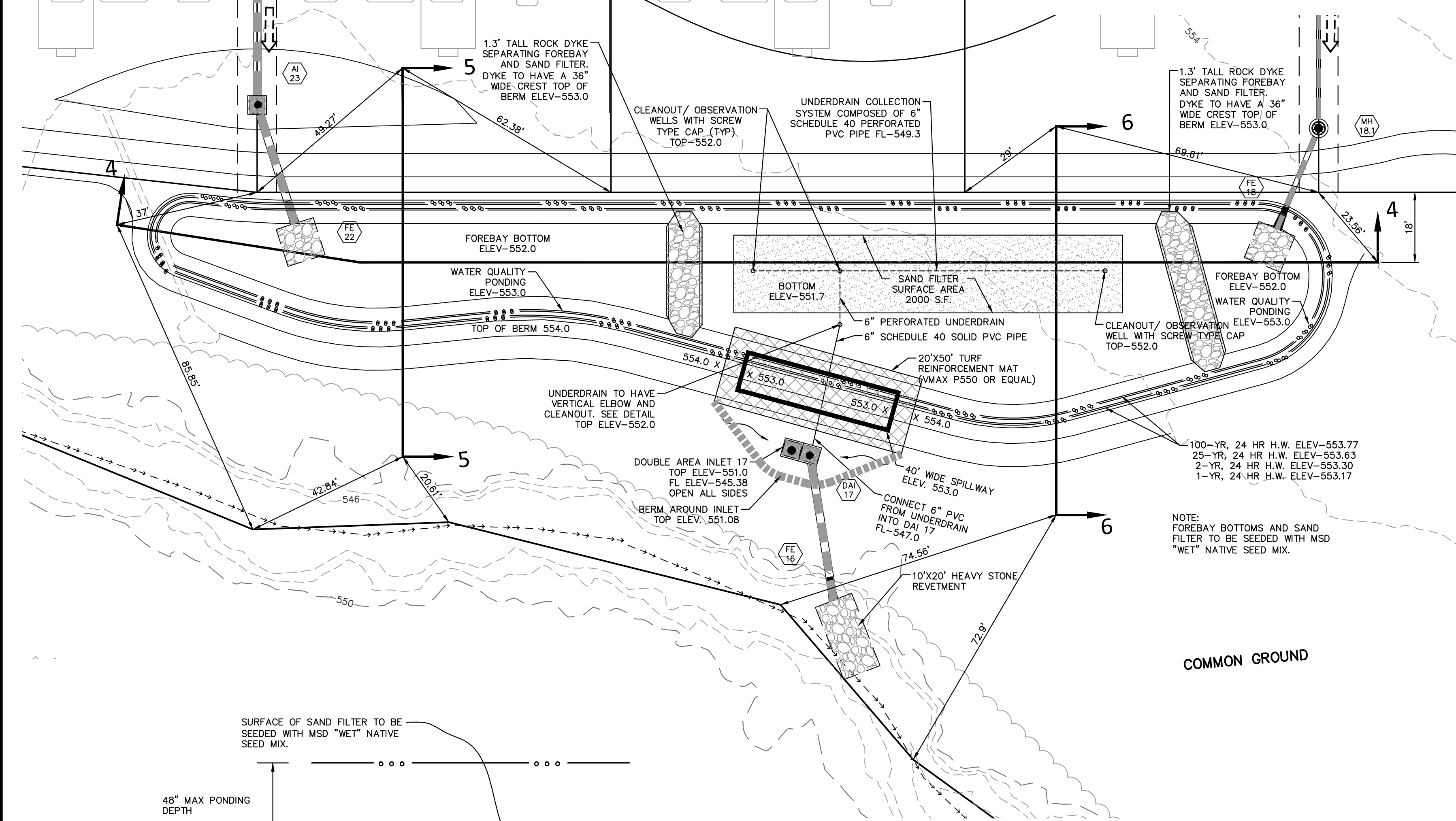


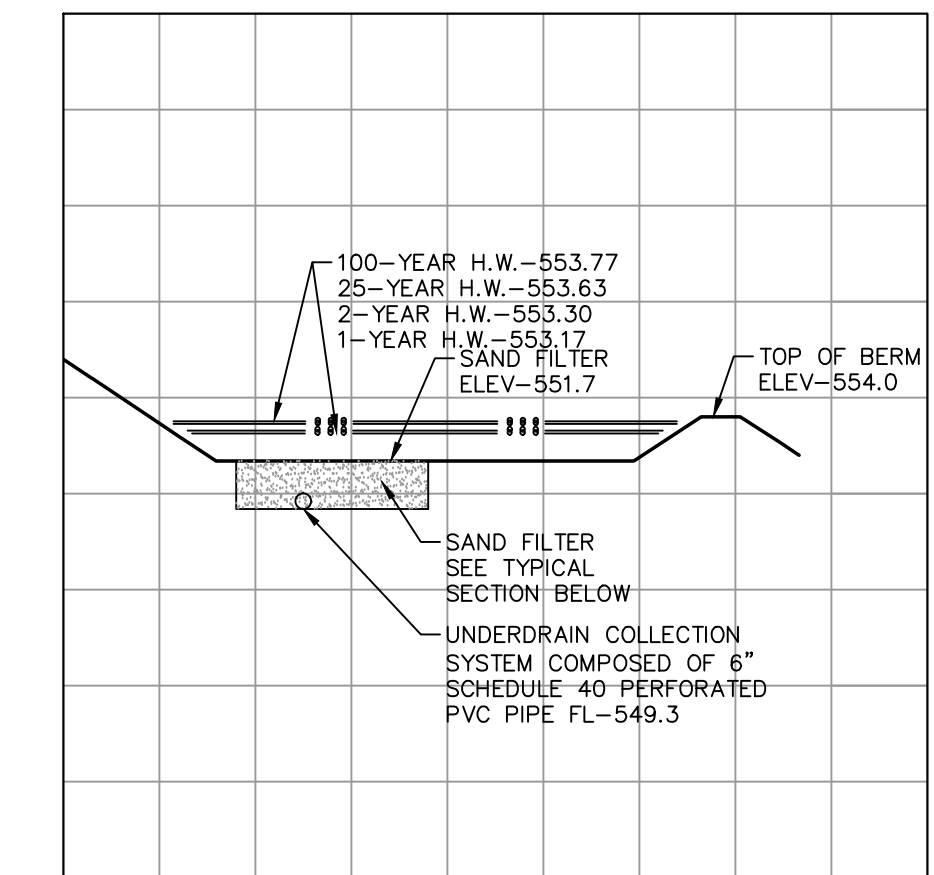
ISSUE	DATE / REMARKS
1	3-3-2015 Initial Submittal
2	5-7-2015 City Comments
3	6-26-2015 City & PWSD #2 Comments
4	11-9-2015 City Comments
5	12-10-2015 City Comments



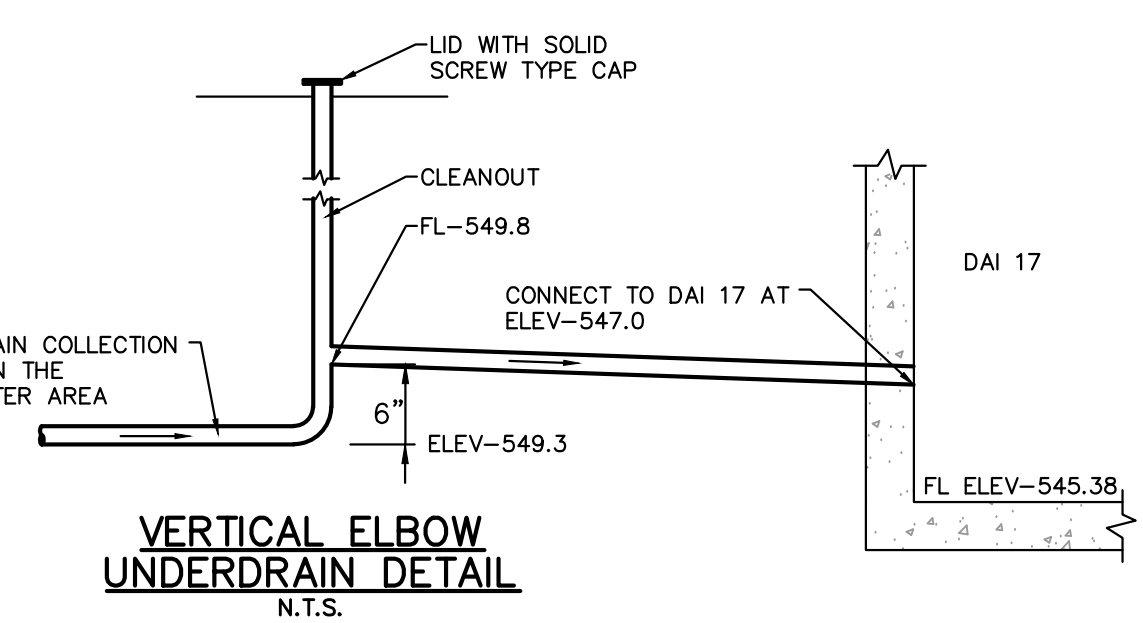
BASIN-B SECTION 4-4
SCALE 1"=20' HORIZ.
1"=10' VERT.



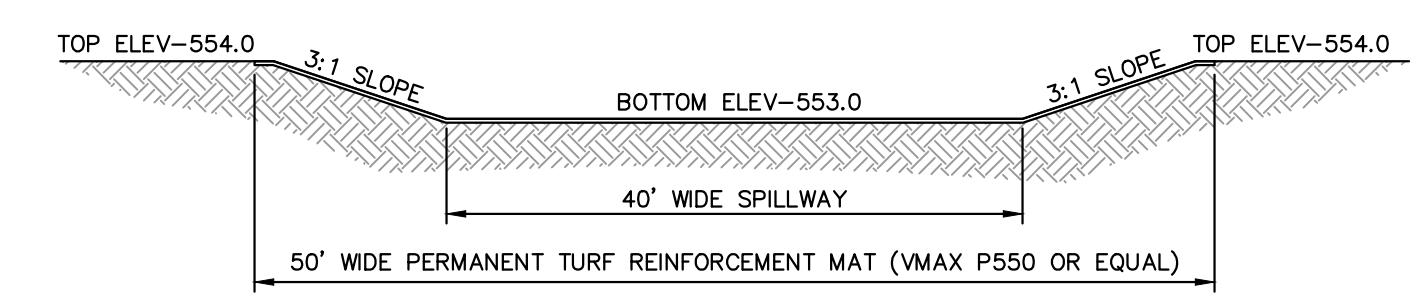
BASIN-B SECTION 5-5
SCALE 1"=20' HORIZ.
1"=10' VERT.



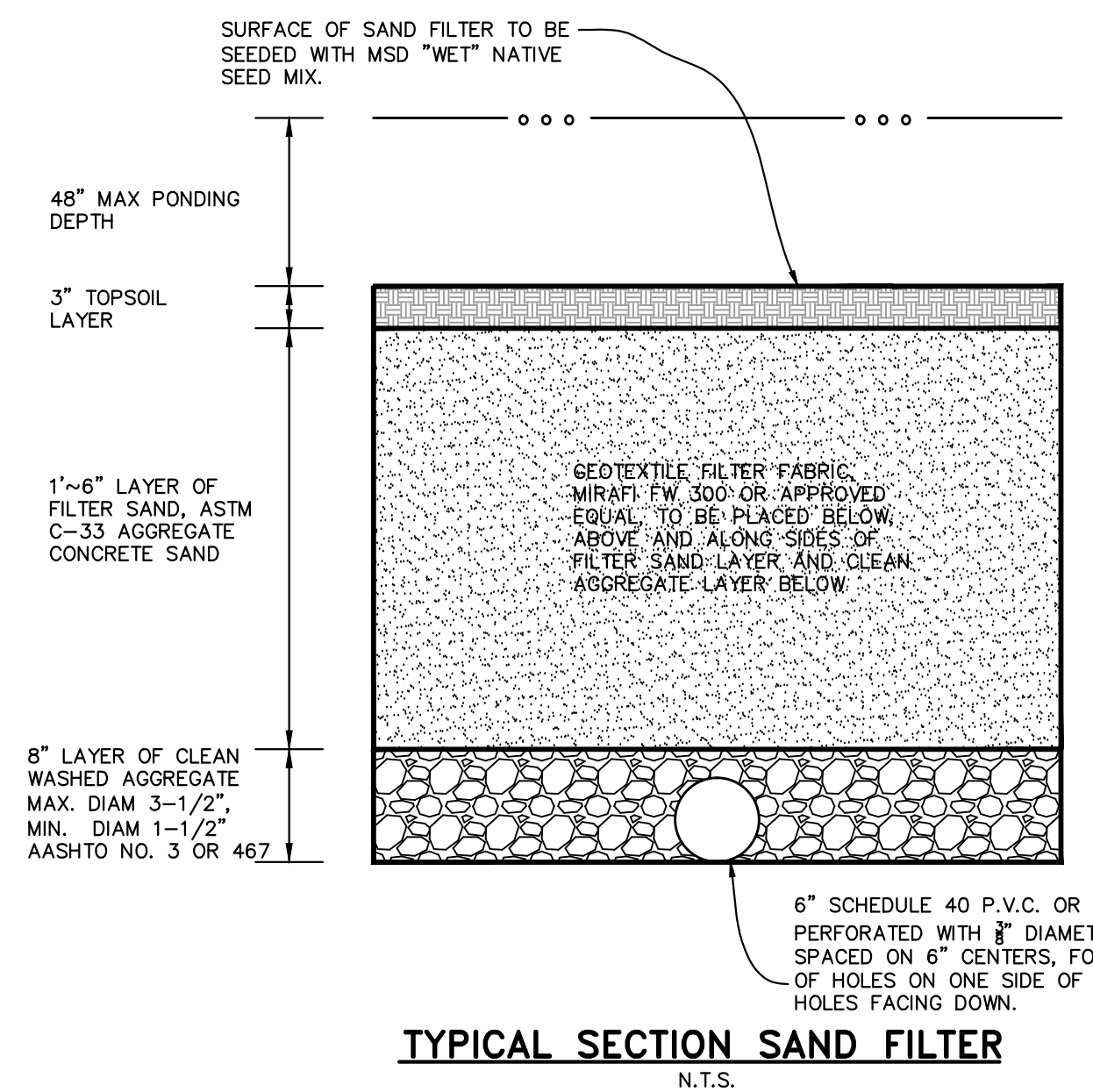
BASIN-B SECTION 6-6
SCALE 1"=20' HORIZ.
1"=10' VERT.



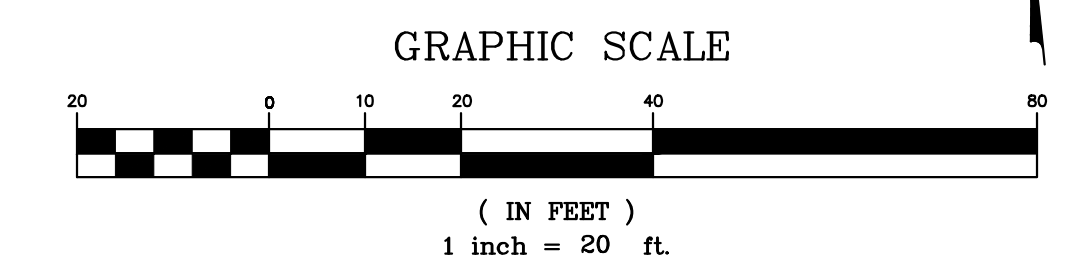
VERTICAL ELBOW UNDERDRAIN DETAIL
N.T.S.



SPILLWAY CROSS SECTION
N.T.S.



TYPICAL SECTION SAND FILTER
N.T.S.



PROJECT TITLE

The Villages at
Shady Creek

OFFALON, MISSOURI

THE STERLING CO.
ENGINEERS & SURVEYORS
5055 New Baumgartner Road
St. Louis, Missouri 63129
Ph 314-487-0440 Fax 314-487-8944
www.sterling-eng-sur.com
Corporate Certificate of Authority #001348



Date: 12/10/2015
RODNEY ARNOLD
LICENSE # PE-2002016612
Civil Engineer

Lombardo Homes of St. Louis, LLC
2299 Technology Drive, Suite 150
OFallon, Missouri 63368
Ph. (636) 265-2710
Fax (636) 695-3195
www.lombardohomesstlouis.com

BASIN B

P+Z No. P&Z NO
City No. 15-162-SP
Date: 12/10/2015
Job No. 14-03-087

Page No.

10.2

IMP

Drawing name: V:\140387\GREF\140387.dwg Plot date: Dec 15, 2015 10:24am Plotted by: jmolitor