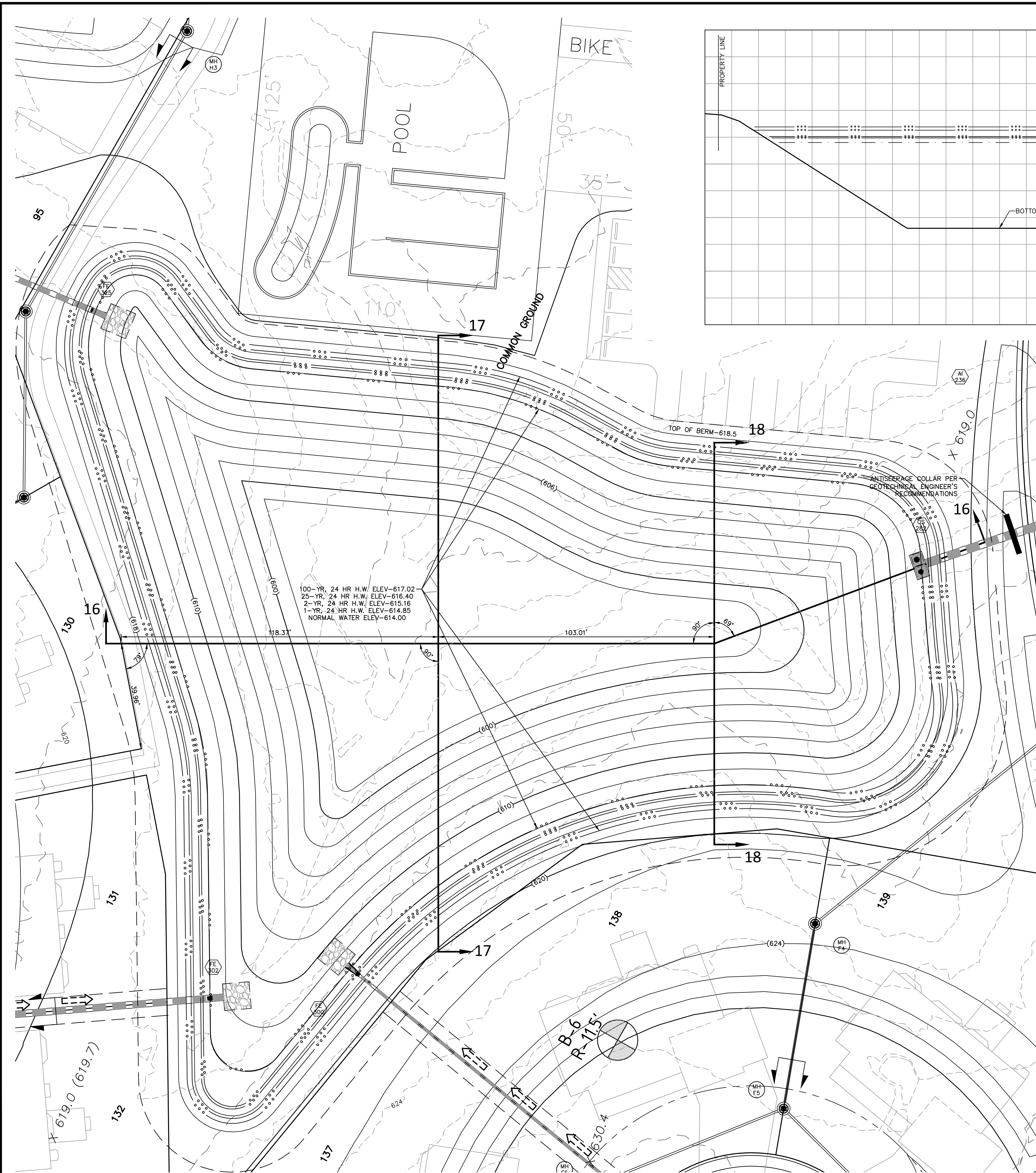
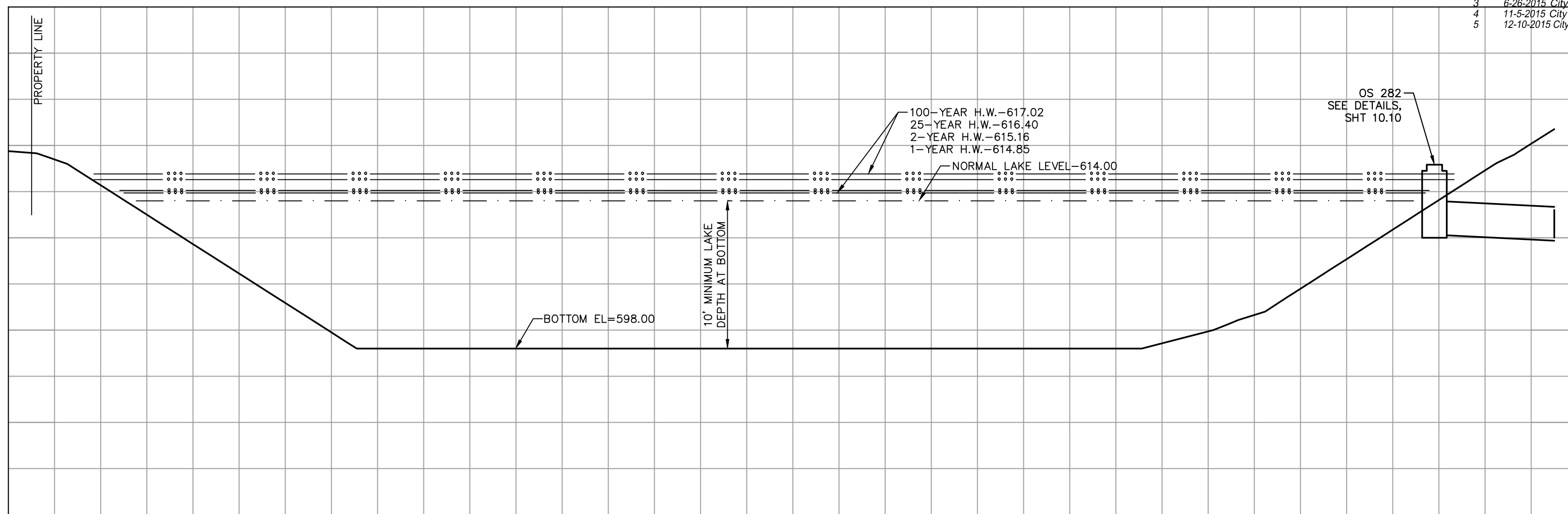


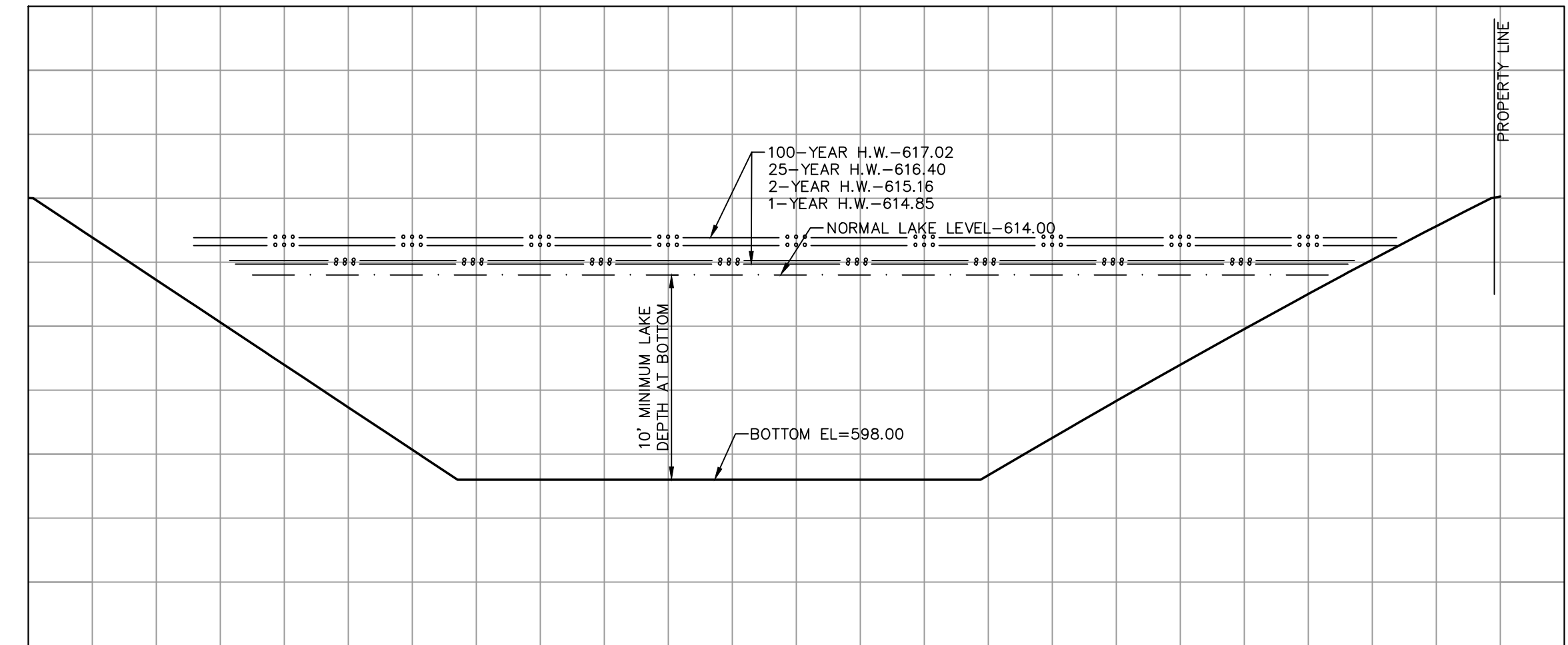
Drawing name: V:\140367\G06F77\Drawings\Improvements\307\MP.dwg Plotter on: Dec 15, 2015 10:31 am. Plotted by: jmorris



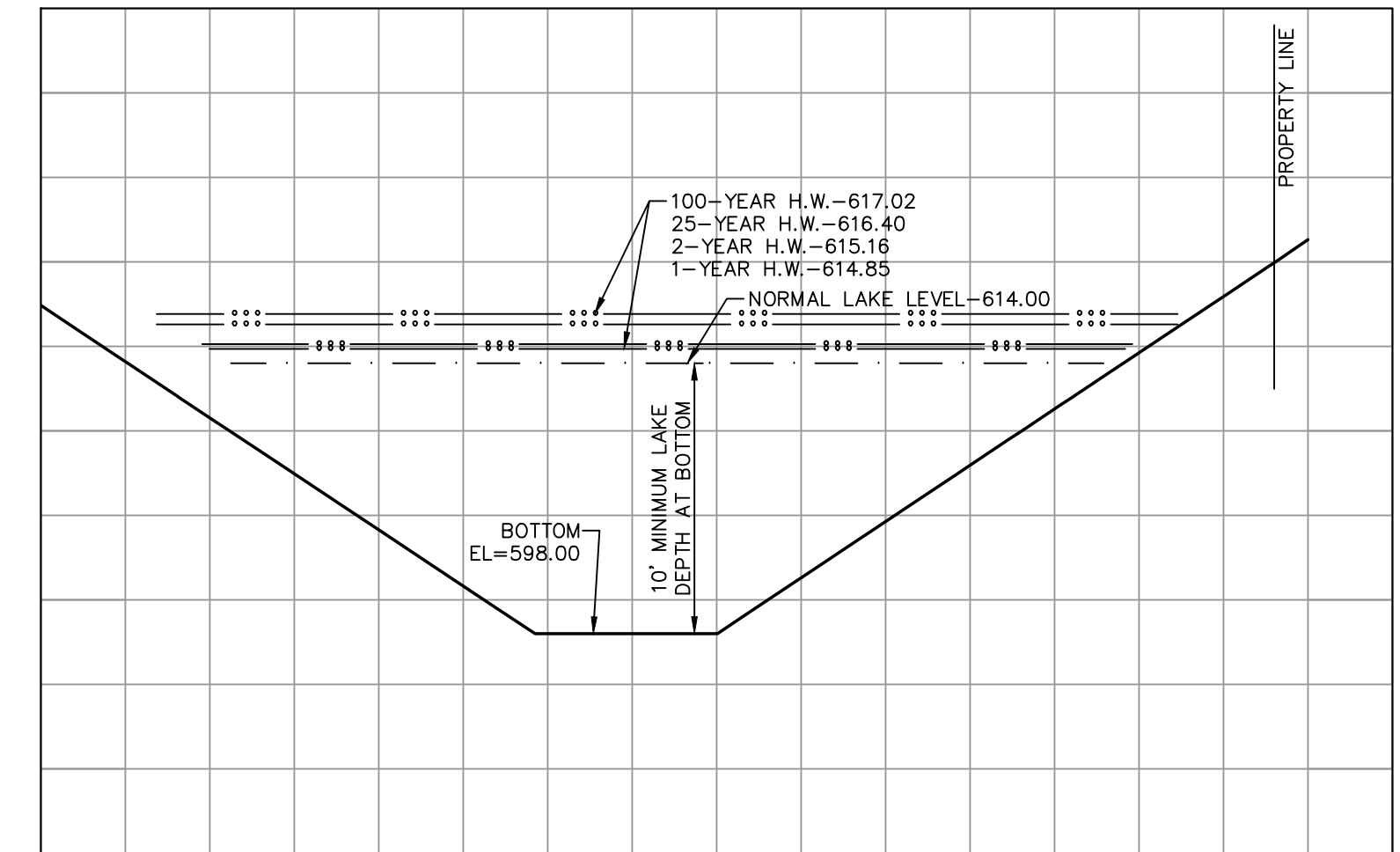
ISSUE	DATE / REMARKS
1	3-3-2015 Initial Submittal
2	5-7-2015 City Comments
3	6-26-2015 City & PWSD #2 Comments
4	11-9-2015 City Comments
5	12-10-2015 City Comments



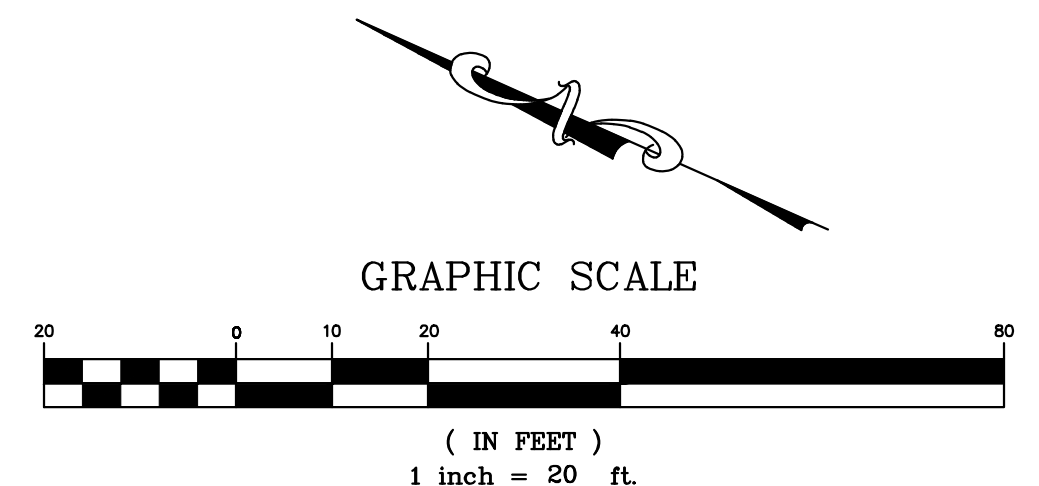
BASIN-F SECTION 16-16
SCALE 1"=20' HORIZ.
1"=10' VERT.



BASIN-F SECTION 17-17
SCALE 1"=20' HORIZ.
1"=10' VERT.



BASIN-F SECTION 18-18
SCALE 1"=20' HORIZ.
1"=10' VERT.



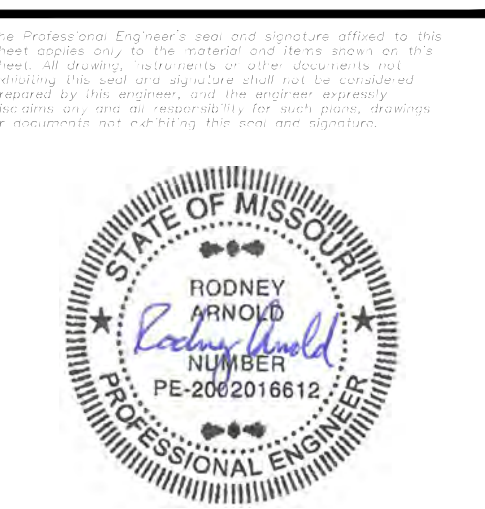
PROJECT TITLE

The Villages at
Shady Creek

OFFALON, MISSOURI

THE STERLING CO.
ENGINEERS & SURVEYORS

5055 New Baumgartner Road
St. Louis, Missouri 63129
Ph 314-487-0440 Fax 314-487-8944
www.sterling-eng-sur.com
Corporate Certificate of Authority #001348



Date: 12/10/2015
RODNEY ARNOLD
LICENSE # PE-2002016612
Civil Engineer

Lombardo Homes of St. Louis, LLC

2299 Technology Drive, Suite 150
OFallon, Missouri 63368
Ph. (636) 265-2710
Fax (636) 695-3195
www.lombardohomesstlouis.com

BASIN F

P+Z No. P&Z NO
City No. 15-162-SP
Date: 12/10/2015
Job No. 14-03-087

Page No.

10.9

IMP