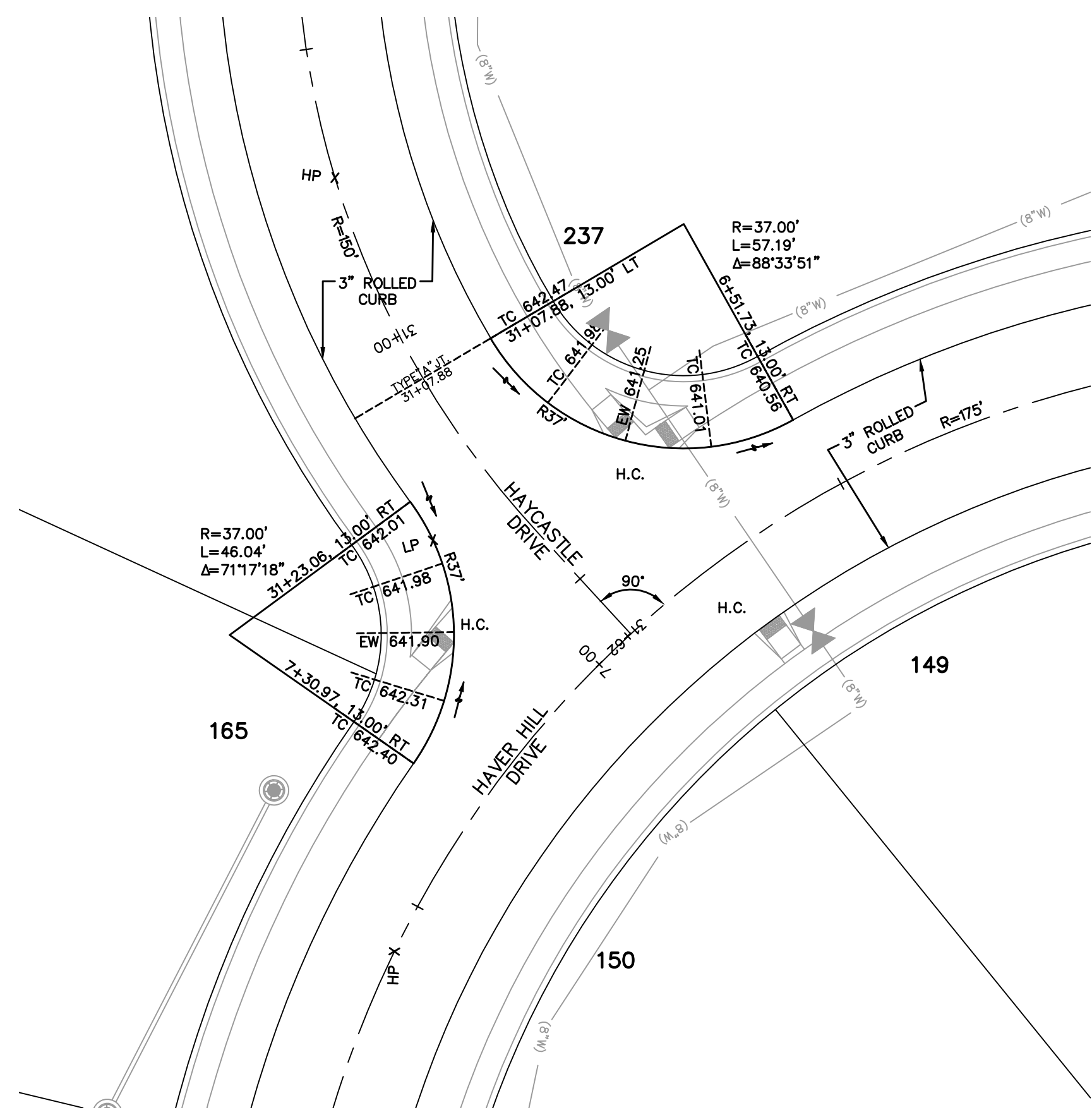
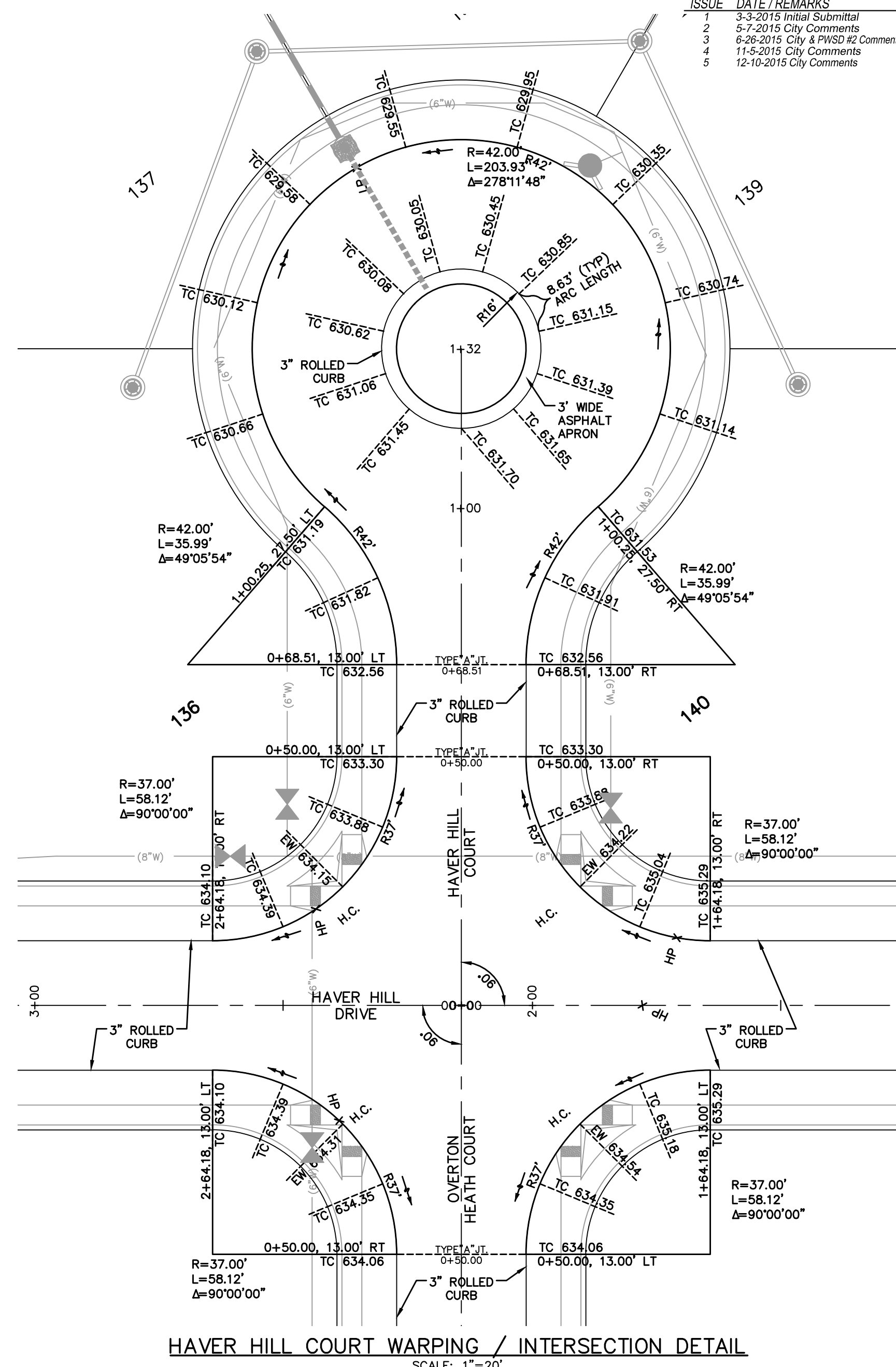


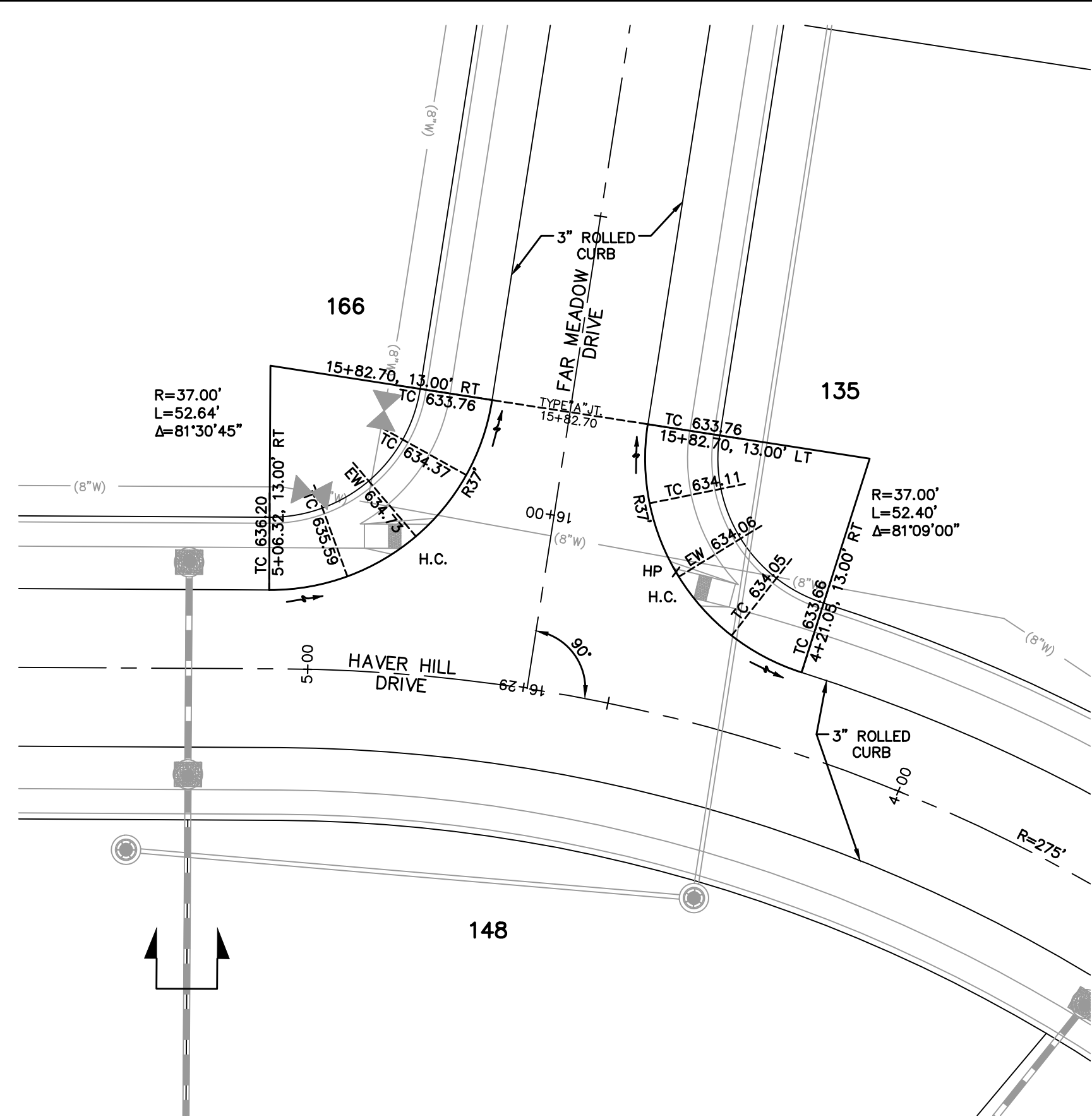
STREET CONNECTION DETAIL
SCALE: 1"=20'



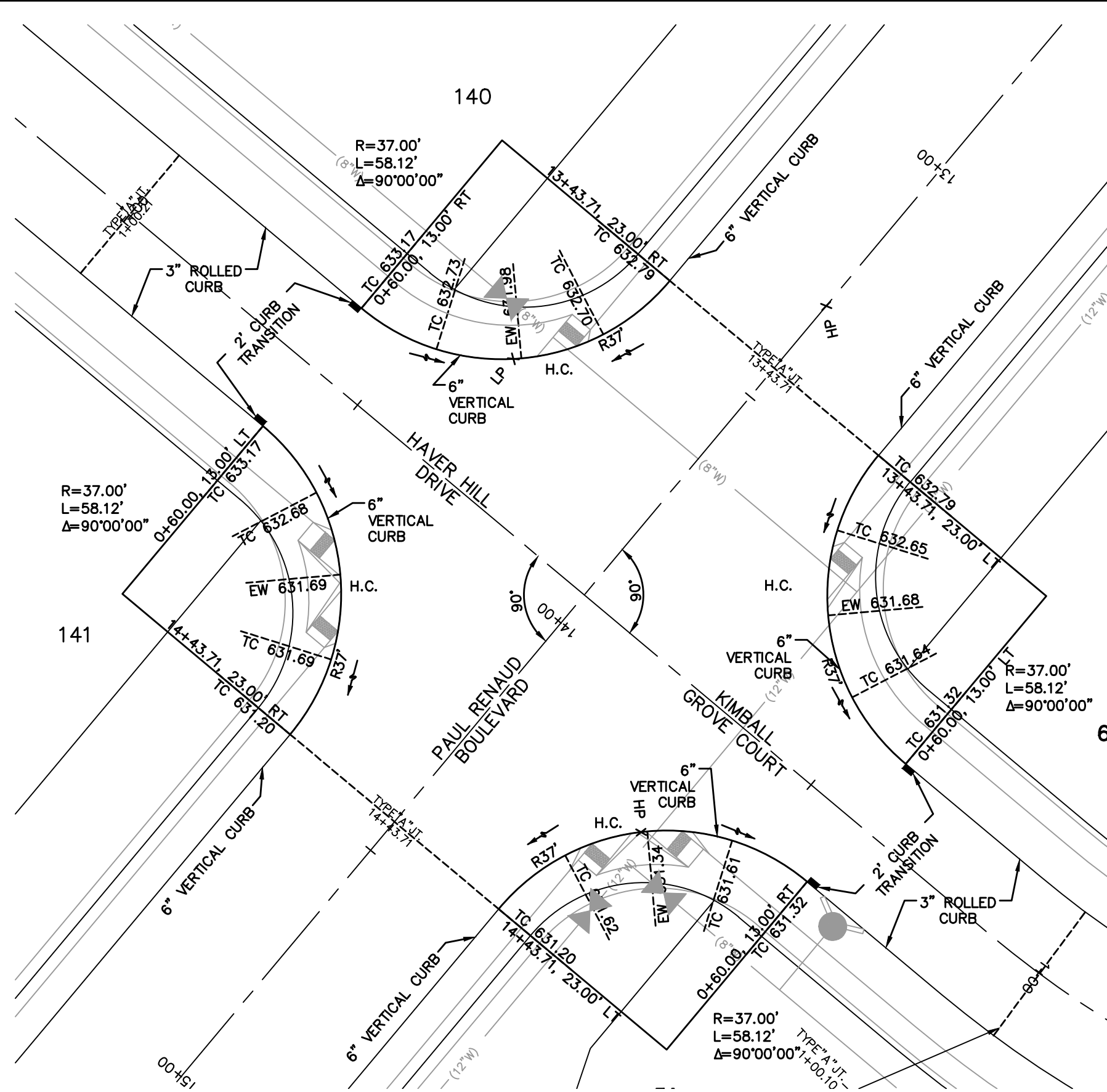
INTERSECTION DETAIL
SCALE: 1"=20'



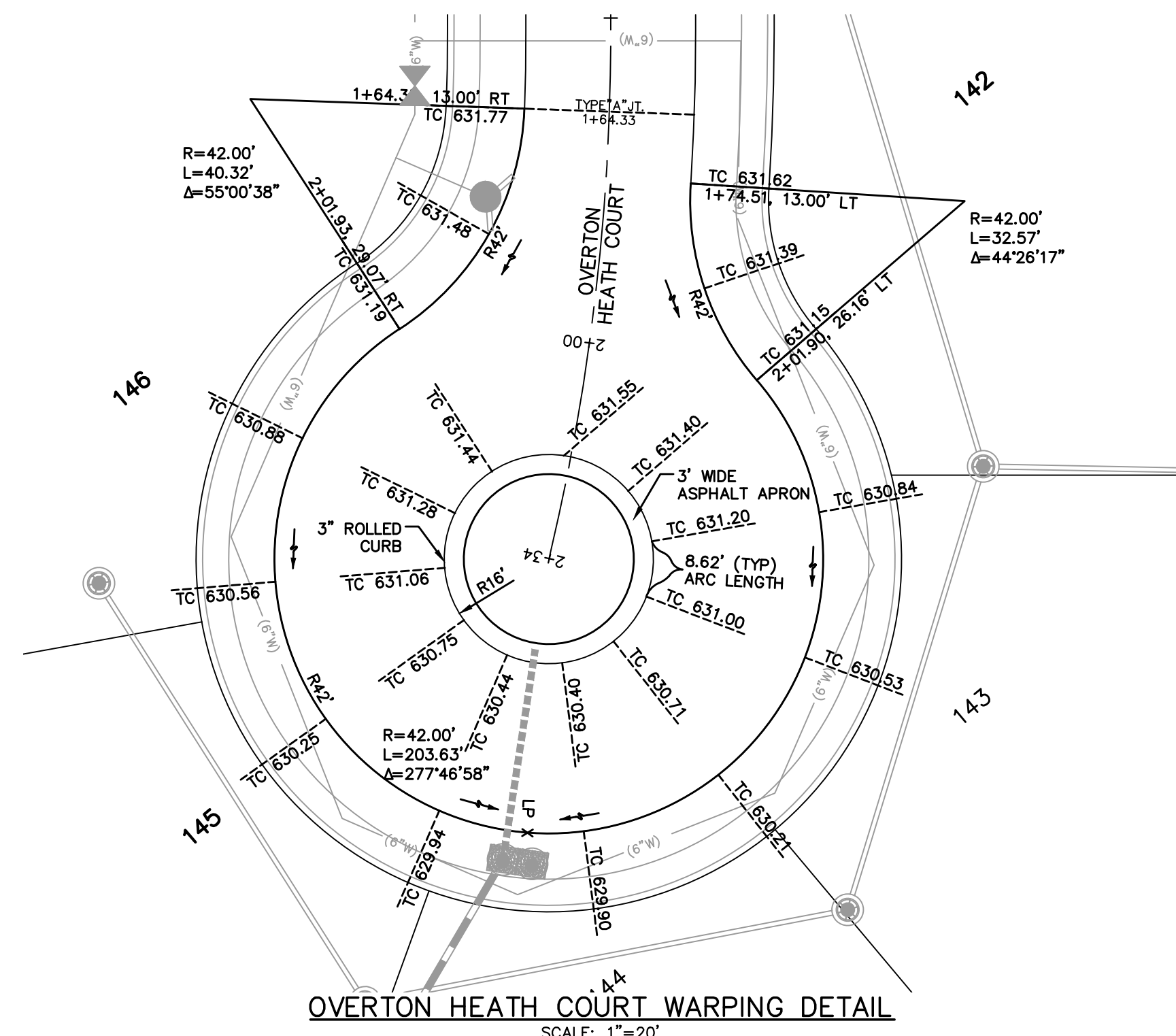
HAYER HILL COURT WARPING / INTERSECTION DETAIL
SCALE: 1"=20'



INTERSECTION DETAIL
SCALE: 1"=20'



INTERSECTION DETAIL
SCALE: 1"=20'



OVERTON HEATH COURT WARPING DETAIL
SCALE: 1"=20'

| ISSUE | DATE / REMARKS |
|-------|-----------------------------------|
| 1 | 3-3-2015 Initial Submittal |
| 2 | 5-7-2015 City Comments |
| 3 | 6-26-2015 City & PWSO #2 Comments |
| 4 | 11-9-2015 City Comments |
| 5 | 12-10-2015 City Comments |

PROJECT TITLE

The Villages at
Shady Creek
OFFALLON, MISSOURI

THE STERLING CO.
ENGINEERS & SURVEYORS
5055 New Baumgartner Road
St. Louis, Missouri 63129
Ph 314-487-0440 Fax 314-487-8944
www.sterling-eng-sur.com
Corporate Certificate of Authority #001348



Date: 12/10/2015
RODNEY ARNOLD
LICENSE # PE-2002016612
Civil Engineer

Lombardo Homes of St. Louis, LLC
2299 Technology Drive, Suite 150
O'Fallon, Missouri 63366
Ph: (636) 265-2710
Fax: (636) 695-3195
www.lombardohomesstlouislouis.com

ENTRANCE / WARPING DETAILS

P+Z No. P&Z NO
City No. 15-162-SP
Date: 12/10/2015
Job No. 14-03-087

Page No.

12.2

IMP

Drawing name: V:\140387_GolfCourses\Drawings\Improvements\3079\WP.dwg Plotter on: Dec 15, 2015 10:35am Plotted by: amolitor