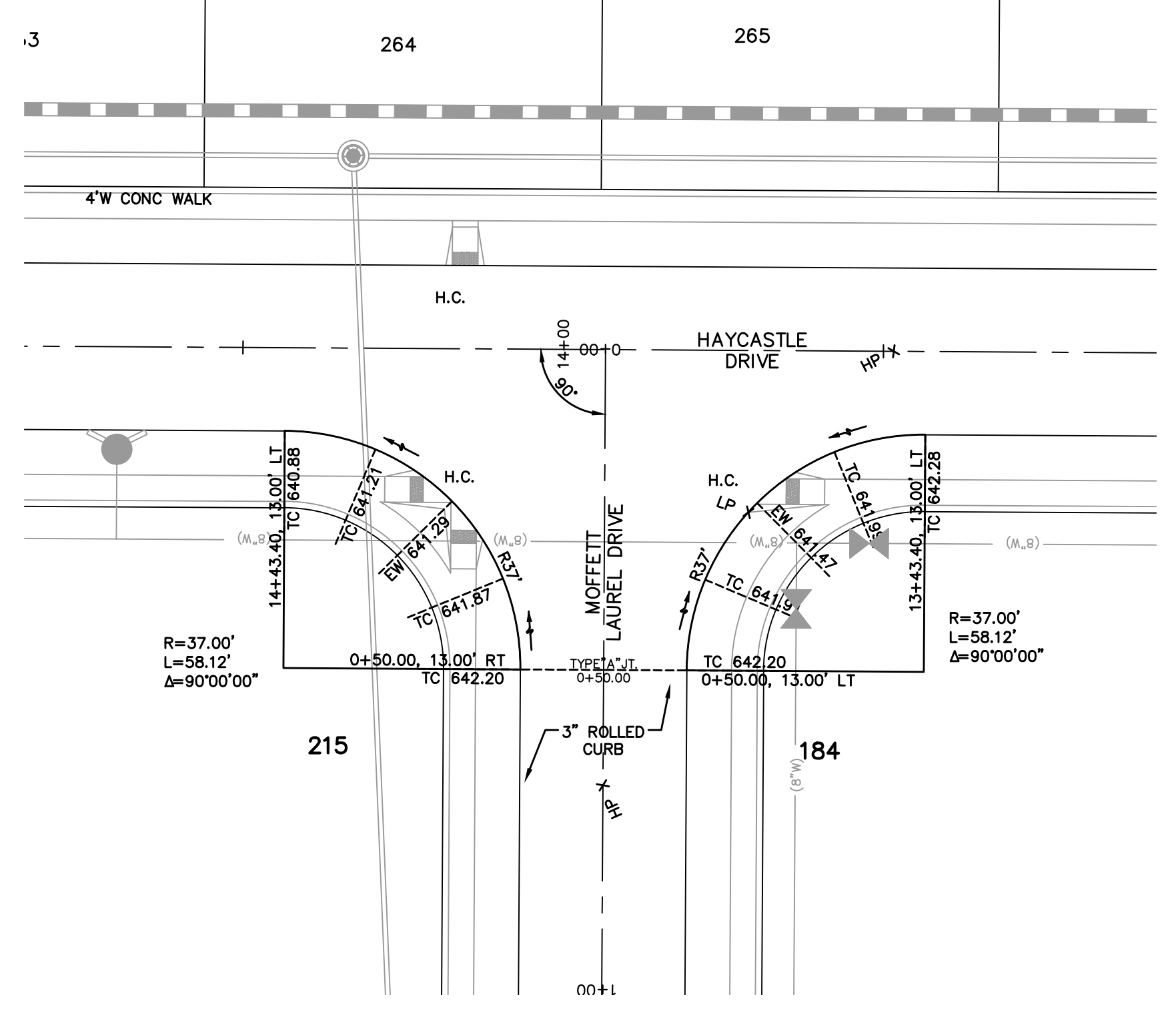
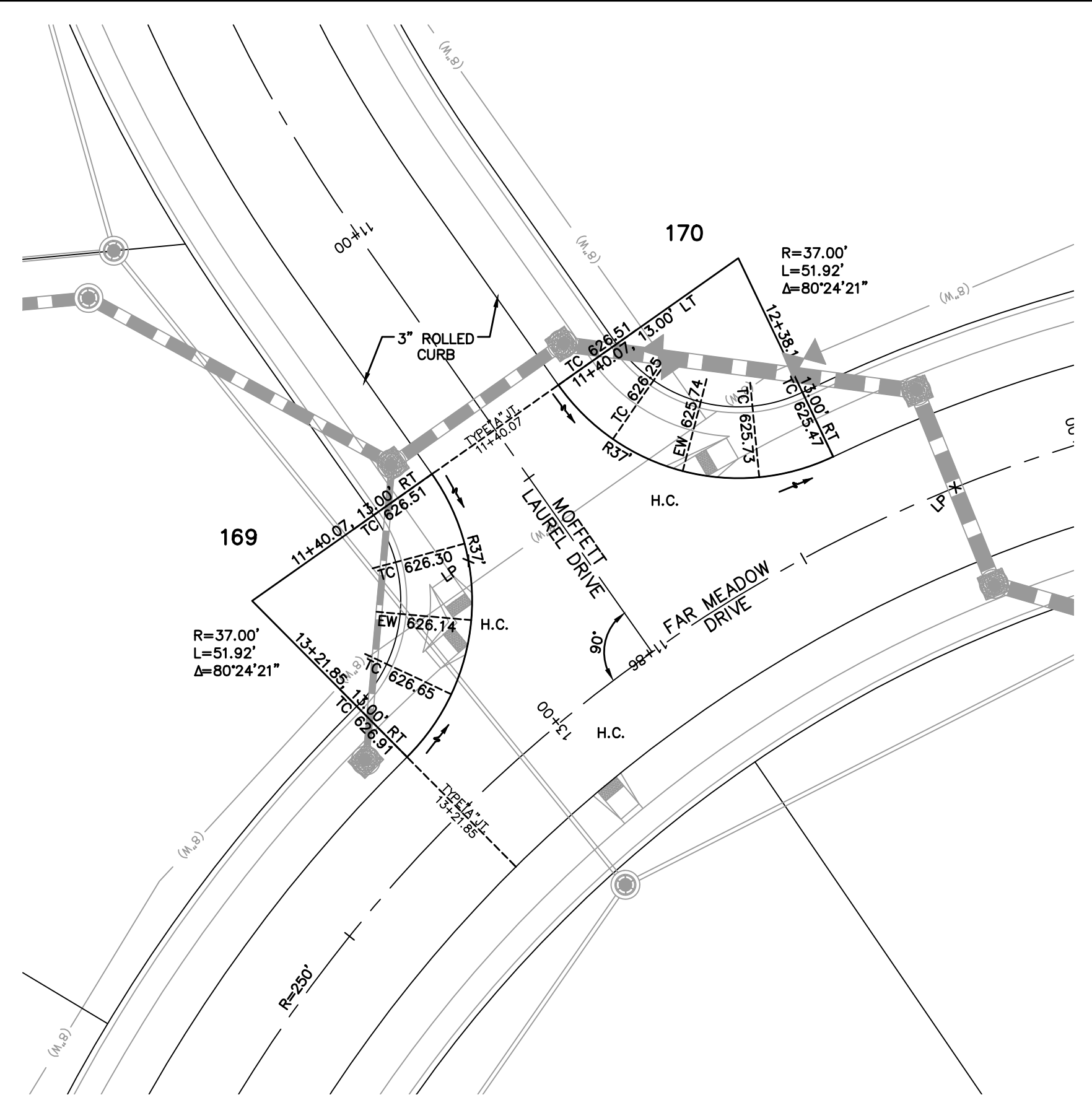


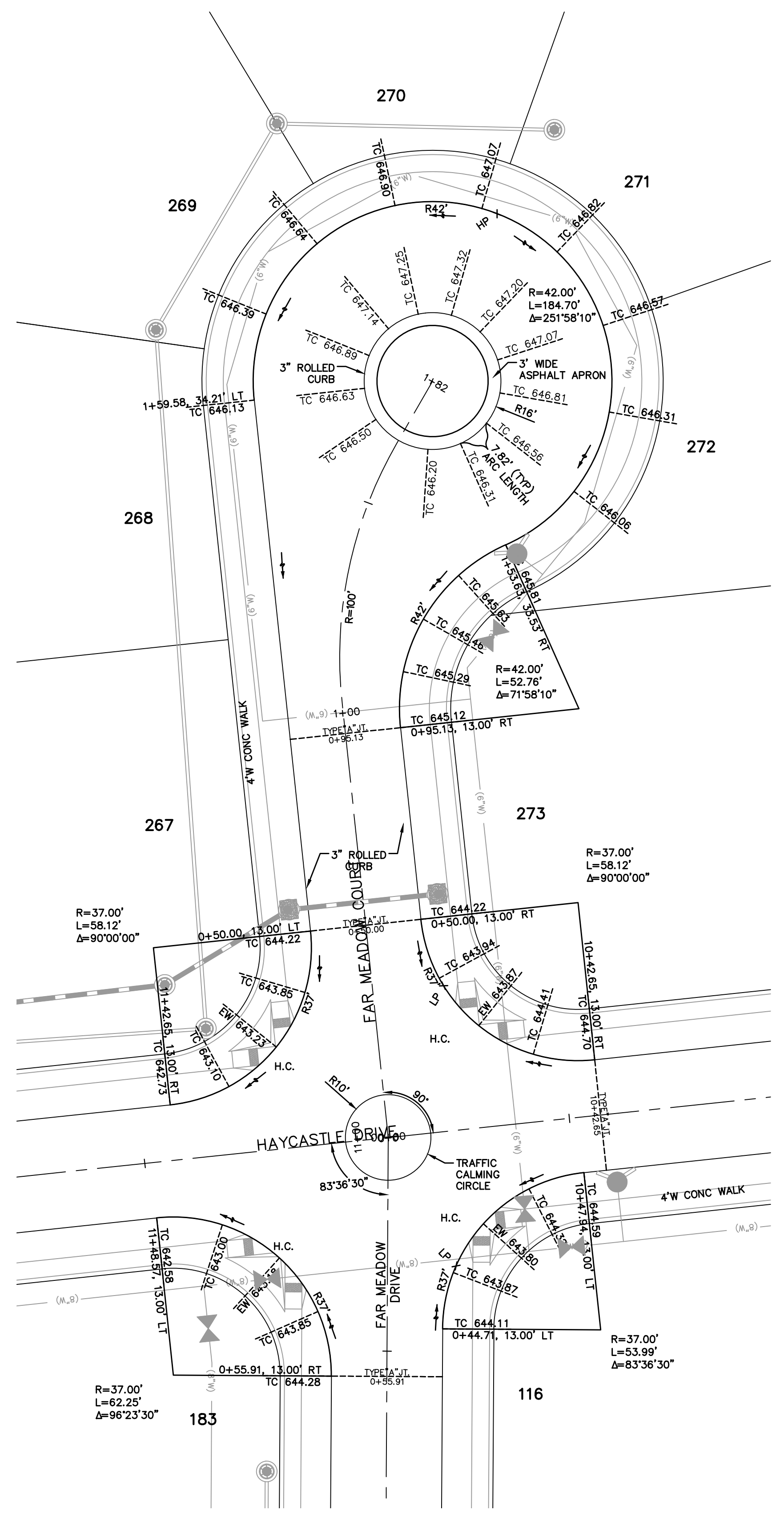
ISSUE	DATE / REMARKS
1	3-3-2015 Initial Submittal
2	5-7-2015 City Comments
3	6-26-2015 City & PWSO #2 Comments
4	11-9-2015 City Comments
5	12-10-2015 City Comments



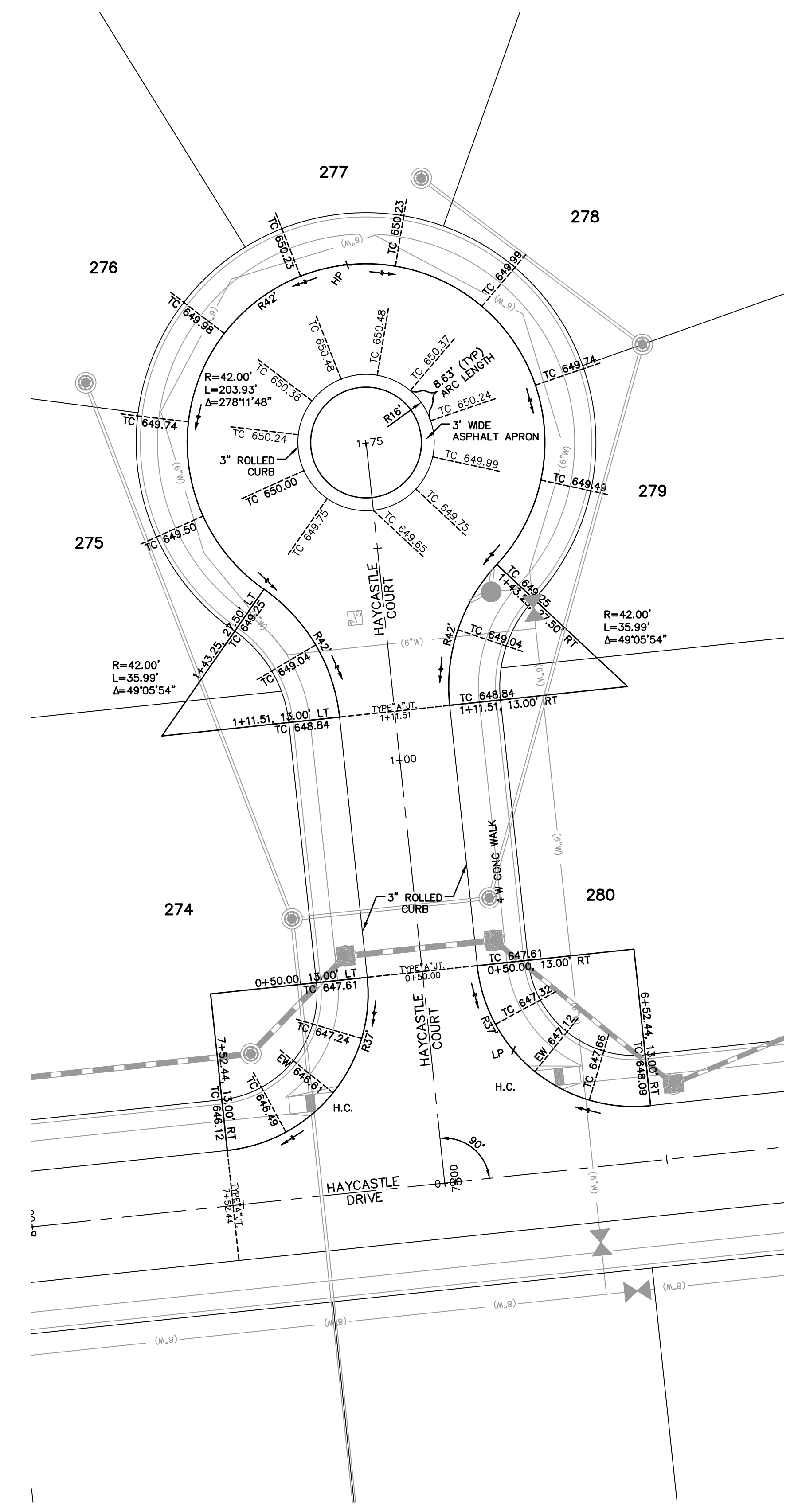
INTERSECTION DETAIL
SCALE: 1"=20'



INTERSECTION DETAIL
SCALE: 1"=20'



FAR MEADOW DRIVE WARPING AND INTERSECTION DETAIL
SCALE: 1"=20'

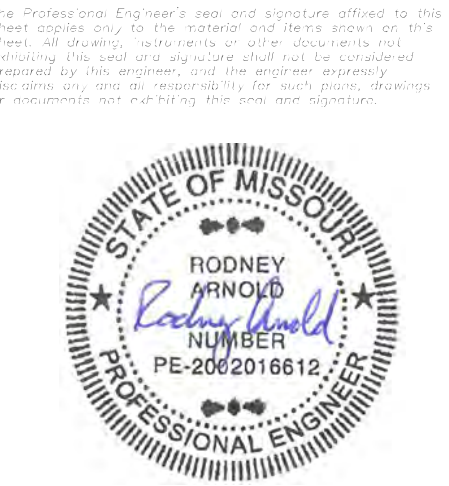


HAYCASTLE COURT WARPING AND INTERSECTION DETAIL
SCALE: 1"=20'

PROJECT TITLE

The Villages at
Shady Creek
OFFALON, MISSOURI

THE STERLING CO.
ENGINEERS & SURVEYORS
5055 New Baumgartner Road
St. Louis, Missouri 63129
Ph 314-487-0440 Fax 314-487-8944
www.sterling-eng-sur.com
Corporate Certificate of Authority #001348



Date: 12/10/2015
RODNEY ARNOLD
LICENSE # PE-2002016612
Civil Engineer

Lombardo Homes of St. Louis, LLC
2299 Technology Drive, Suite 150
Offalton, Missouri 63366
Ph: (636) 265-2710
Fax: (636) 695-3195
www.lombardohomesstlouis.com

ENTRANCE / WARPING DETAILS

P+Z No. P&Z NO
City No. 15-162-SP
Date: 12/10/2015
Job No. 14-03-087

Page No.

12.5

IMP

Drawing name: V:\140387_GREFF\Drawings\Improvements\3079\WP.dwg Plotted on: Dec 15, 2015 10:56am Plotted by: jmorris