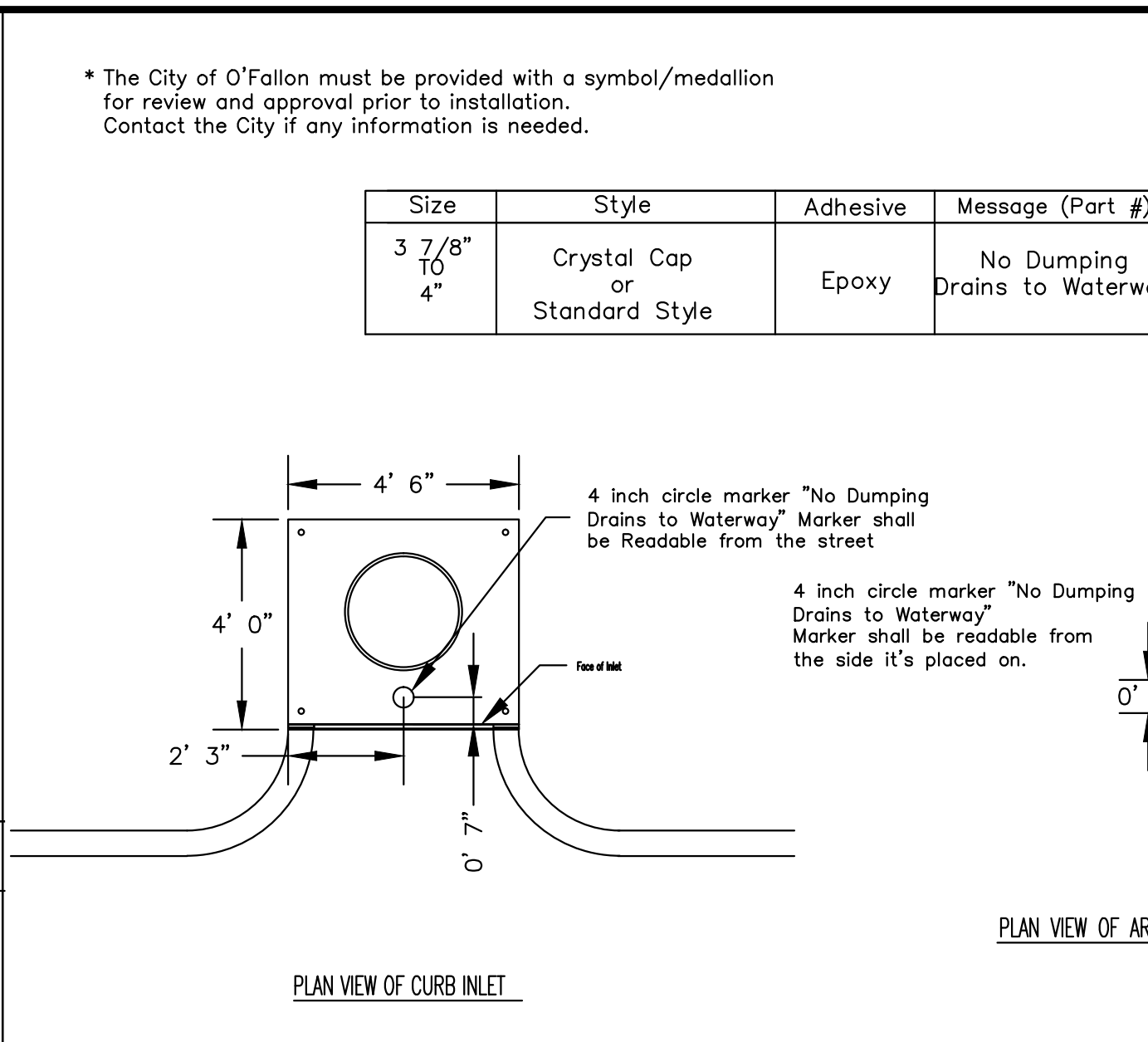


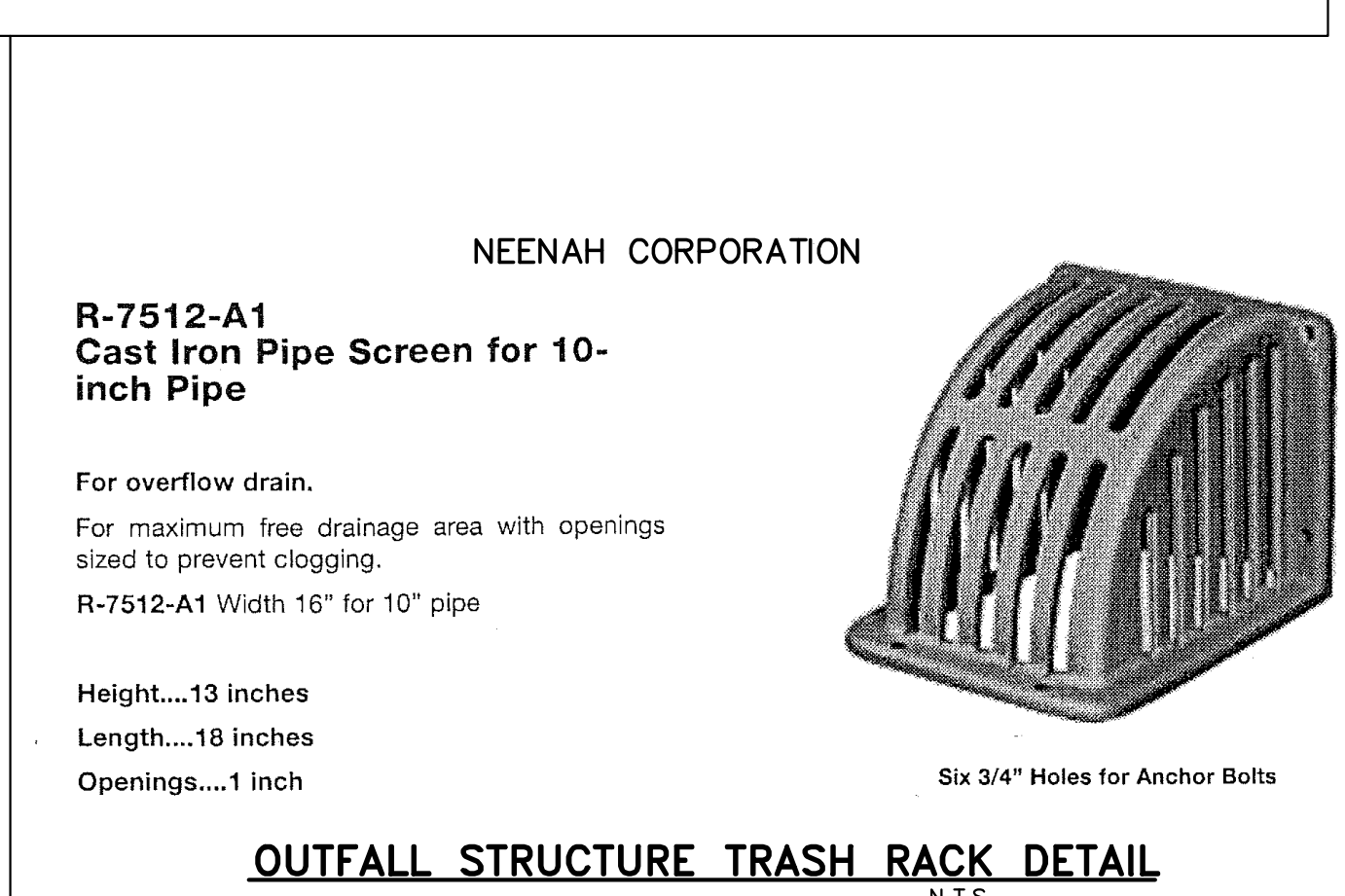
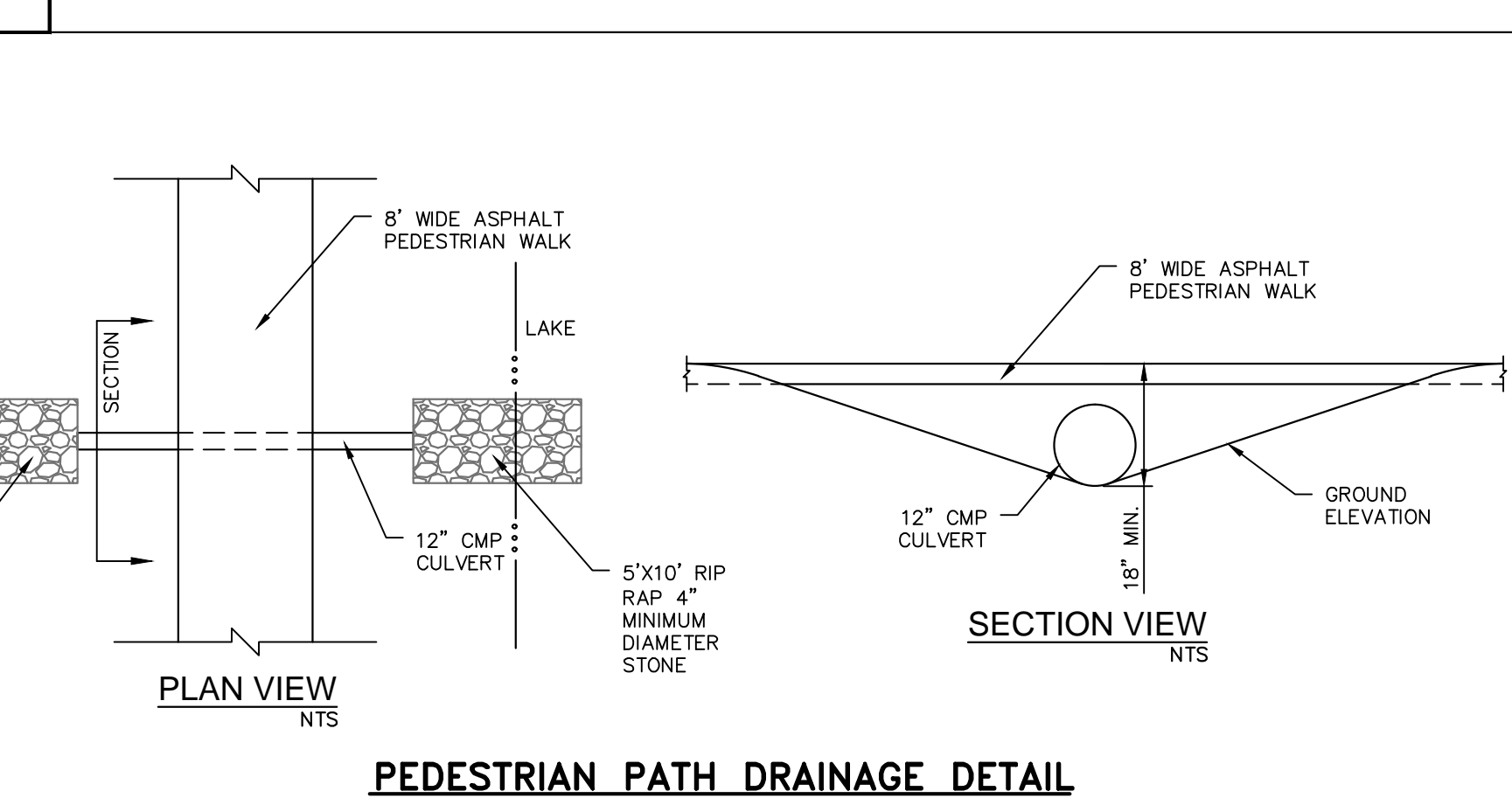
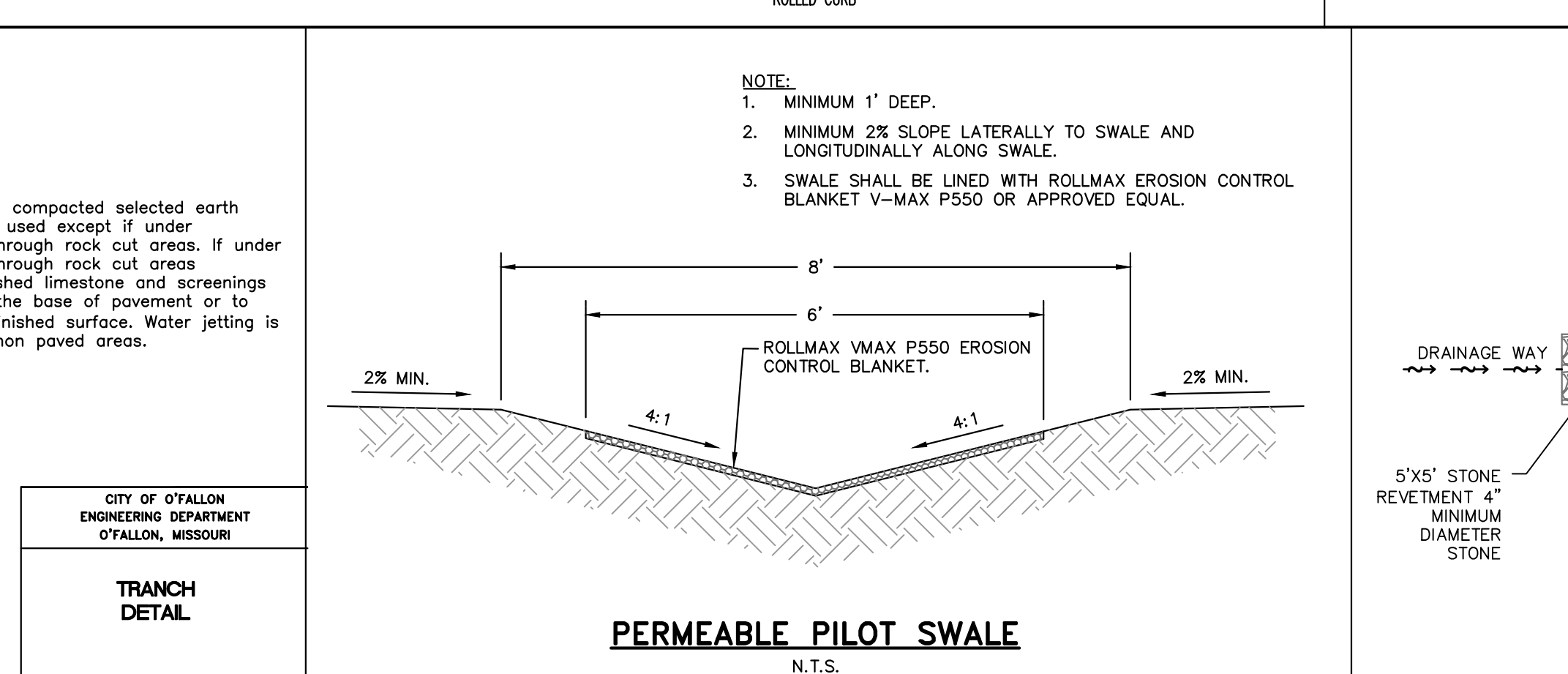
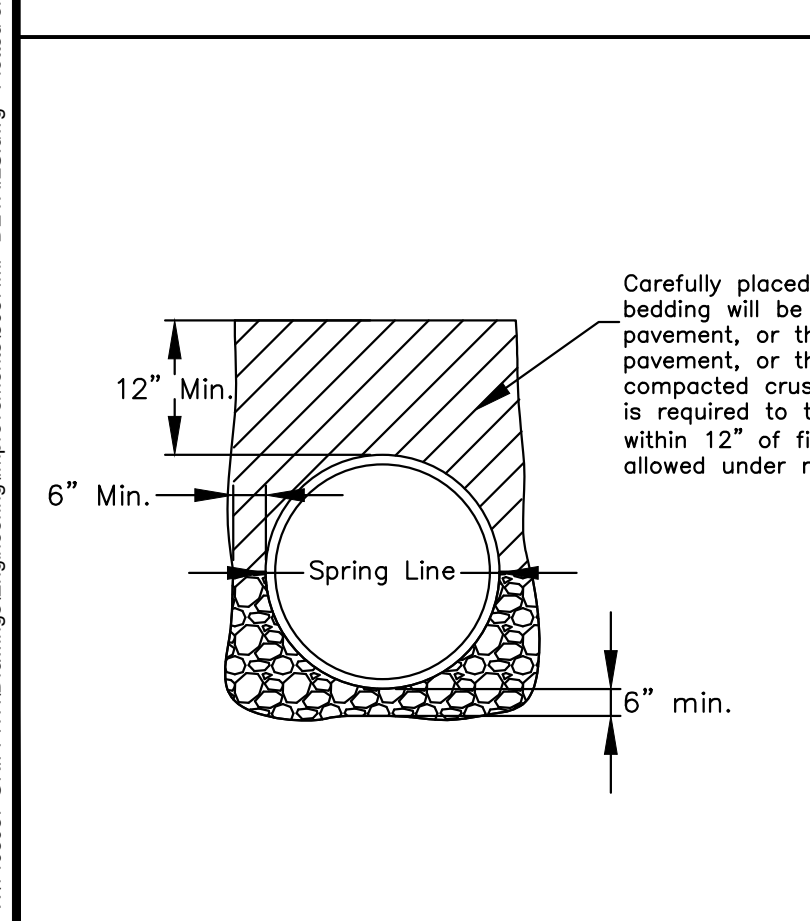
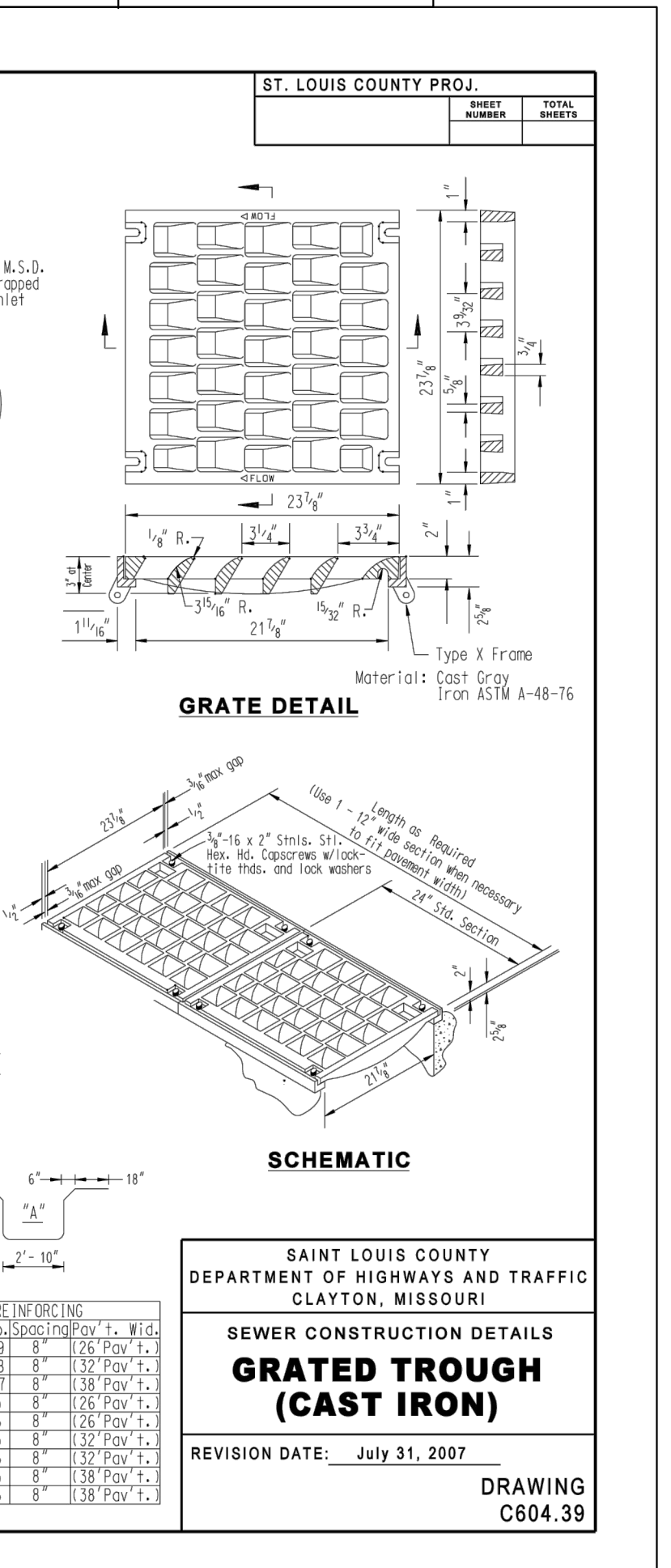
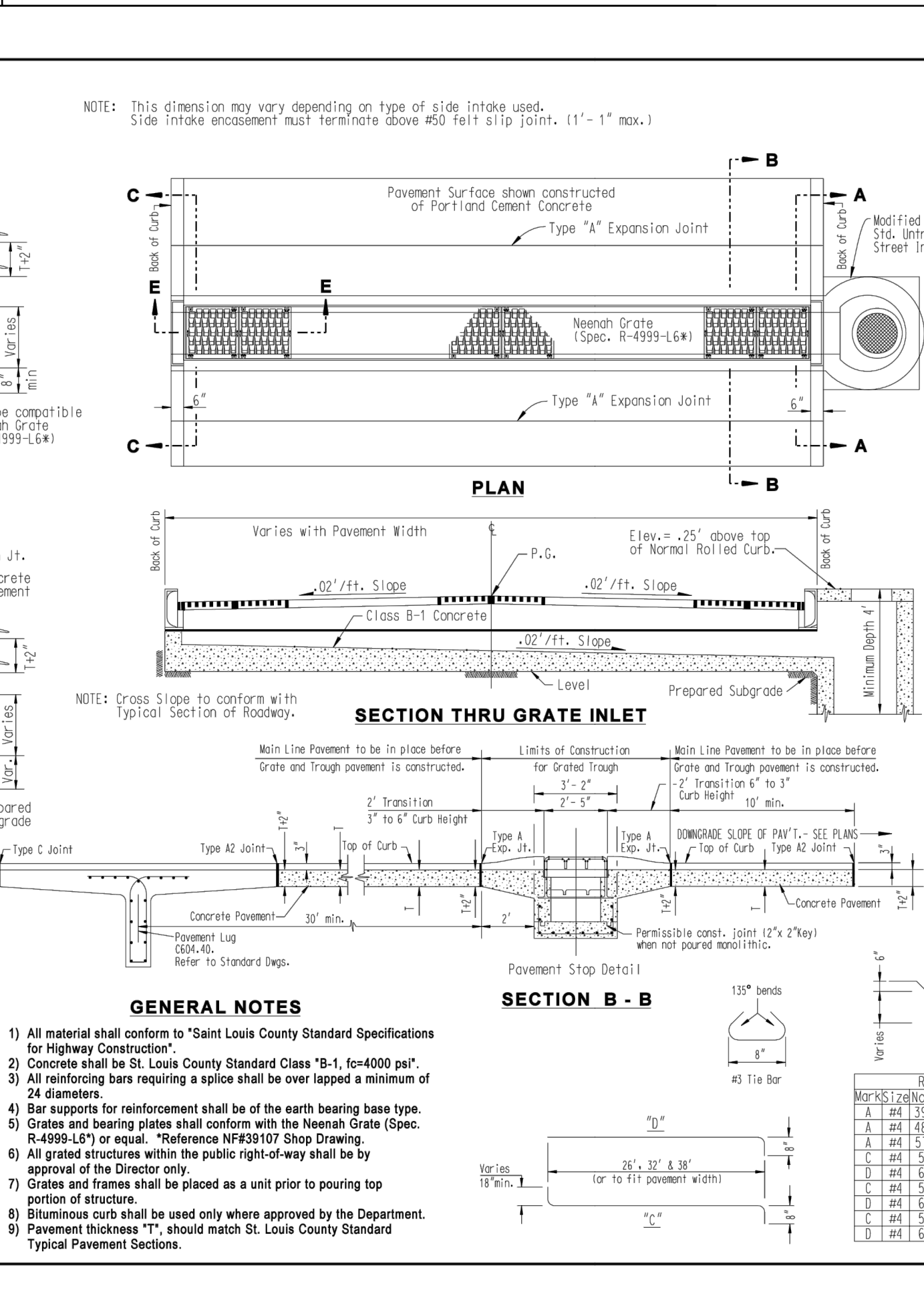
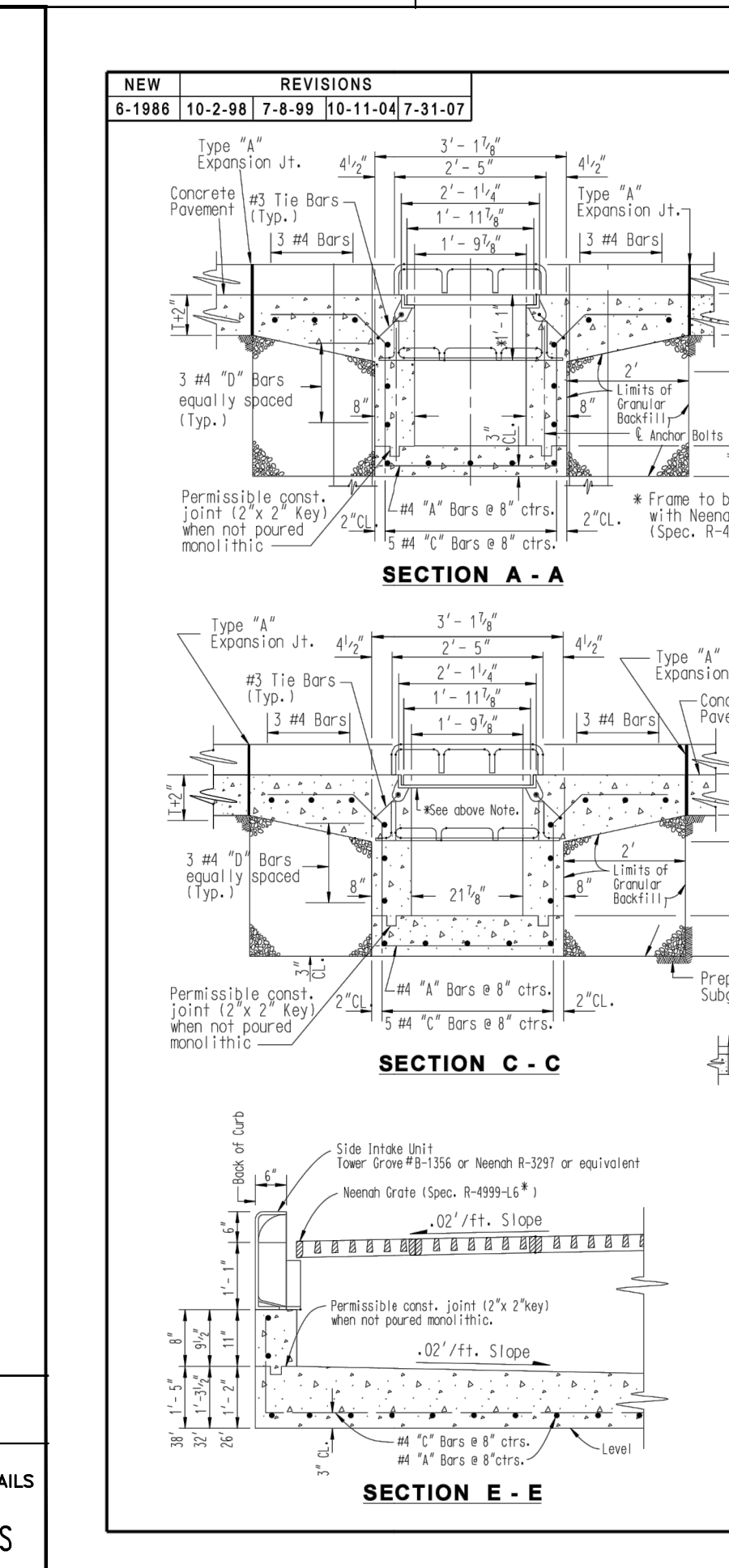
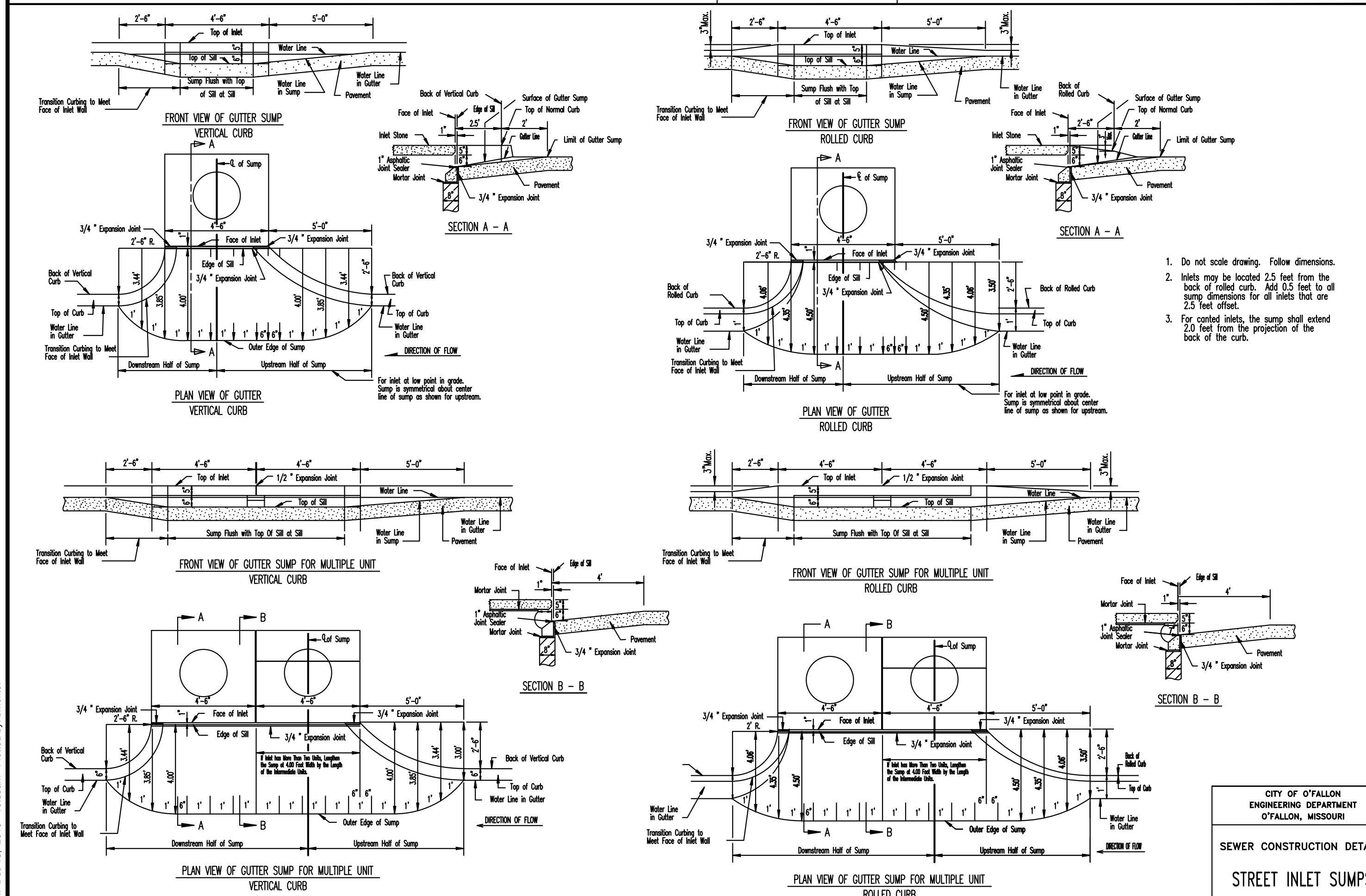
MSD Type 5 Rock Blanket (% By Weight Passing)

Sieve	Maximum	Minimum
12 inch	90	70
6 inch	30	10
1/2 inch	5	0



ISSUE DATE / REMARKS

1	3-3-2015 Initial Submittal
2	5-7-2015 City Comments
3	6-26-2015 City & PWSO #2 Comments
4	11-9-2015 City Comments
5	12-10-2015 City Comments



*** All other Storm Sewer Details will be by M.S.D. 2009 Standards and Specifications. ** ALL INLETS SHALL HAVE A 5/8" TRASH BAR CENTERED WITHIN THE OPENING(S).**

PROJECT TITLE
The Villages at Shady Creek
OFALLON, MISSOURI

THE STERLING CO.
ENGINEERS & SURVEYORS
5055 New Baumgartner Road
St. Louis, Missouri 63129
Ph 314-487-0440 Fax 314-487-8944
www.sterling-eng-sur.com
Corporate Certificate of Authority #001348

STATE OF MISSOURI
RODNEY ARNOLD
LICENSE # PE-2002016612
Civil Engineer

Date: 12/10/2015
RODNEY ARNOLD
LICENSE # PE-2002016612
Civil Engineer

Lombardo Homes of St. Louis, LLC
2299 Technology Drive, Suite 150
O'Fallon, Missouri 63366
Ph. (636) 265-2710
Fax (636) 695-3195
www.lombardohomesstlouis.com

STORM SEWER DETAILS

SAINT LOUIS COUNTY
DEPARTMENT OF HIGHWAYS AND TRAFFIC
CLAYTON, MISSOURI

SEWER CONSTRUCTION DETAILS
GRADED TROUGH (CAST IRON)
REVISION DATE: July 31, 2007
DRAWING C604.39

NEENAH CORPORATION
R-7512-A1
Cast Iron Pipe Screen for 10-inch Pipe

For overflow drain.
For maximum free drainage area with openings sized to prevent clogging.
R-7512-A1 Width 16" for 10" pipe

Height....13 inches
Length....18 inches
Openings....1 inch

Six 3/4" Holes for Anchor Bolts

P+Z No. P+Z NO
City No. 15-162-SP
Date: 12/10/2015
Job No. 14-03-087
Page No.
DTL-8
IMP