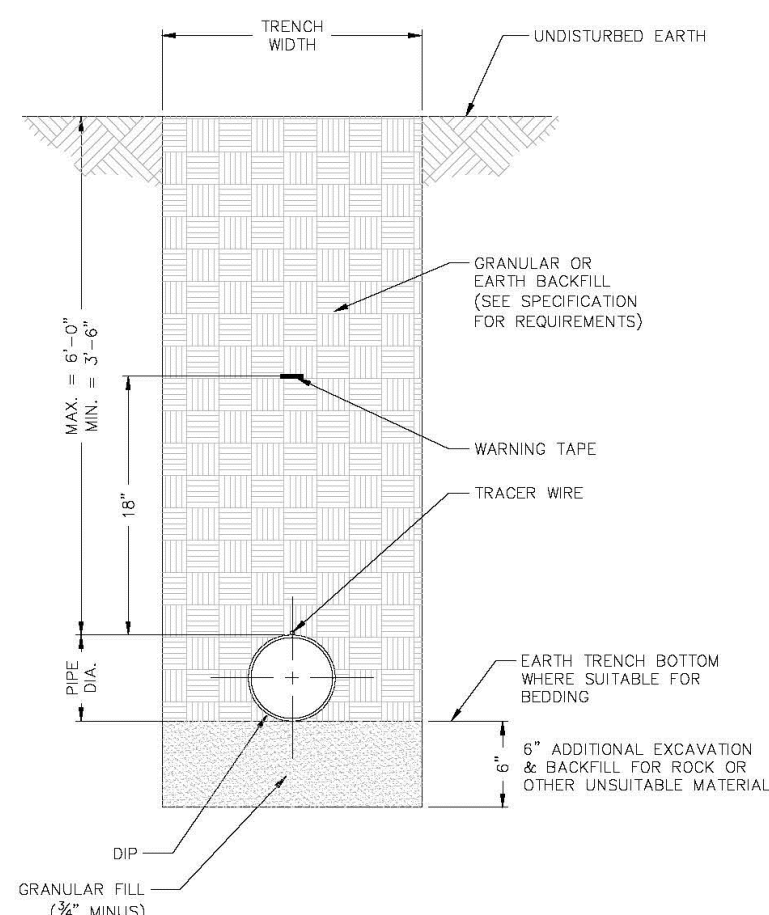


**NOTES**

- 1) SEE SPECIFICATIONS FOR ADDITIONAL DETAILS FOR BEDDING AND BACKFILL.

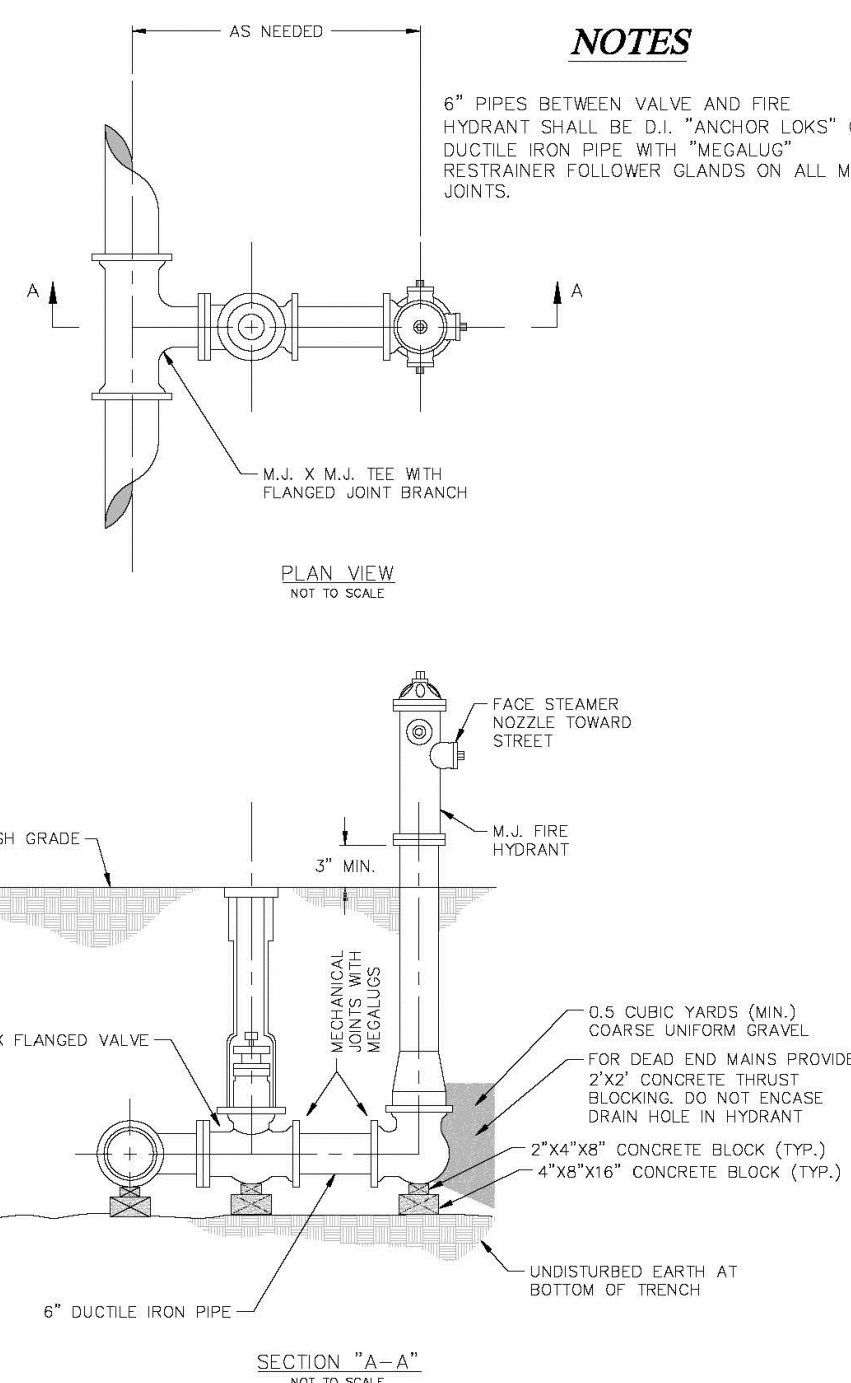
TYPICAL TRENCH SECTION FOR PVC PIPE  
NOT TO SCALE  
**DETAIL "A"**  
PAGE 1 OF 2



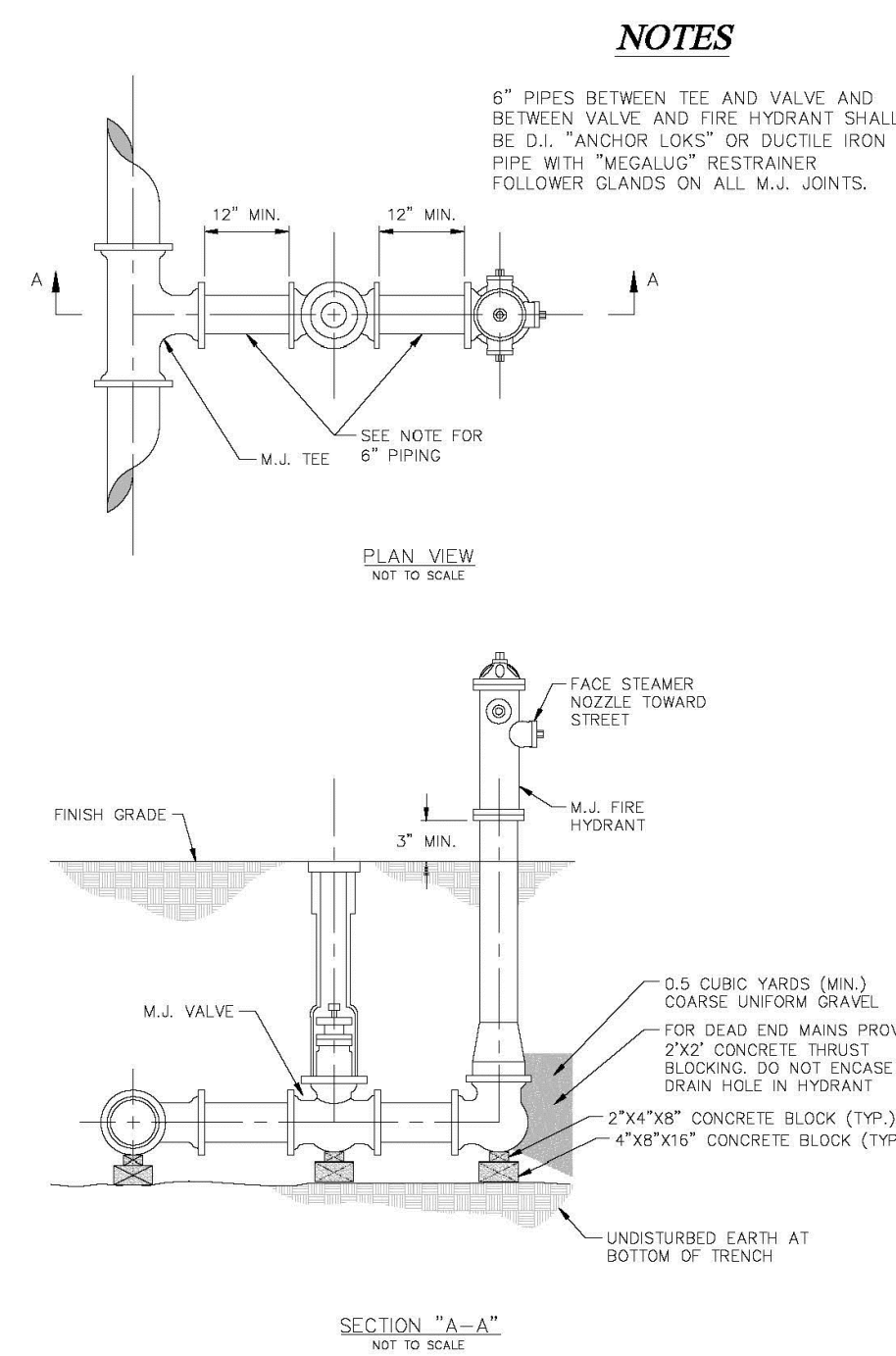
**NOTES**

- 1) POLYWRAP REQUIRED FOR DUCTILE IRON PIPE
- 2) SEE SPECIFICATIONS FOR ADDITIONAL DETAILS FOR BEDDING AND BACKFILL.

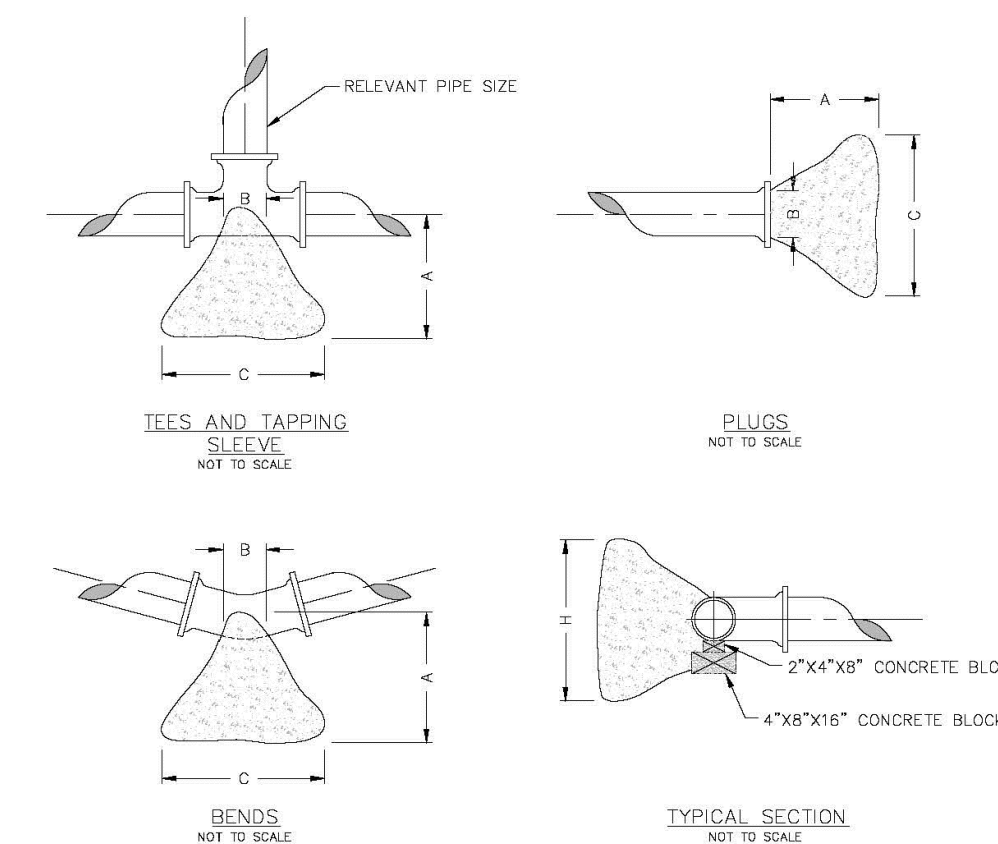
TYPICAL TRENCH SECTION FOR DUCTILE IRON PIPE  
NOT TO SCALE  
**DETAIL "A"**  
PAGE 2 OF 2



FIRE HYDRANT DETAIL  
**DETAIL "B"**  
PAGE 1 OF 3



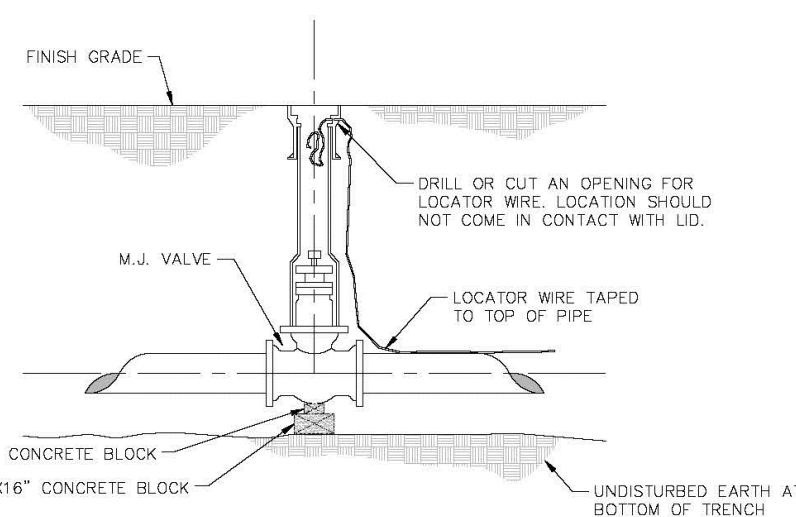
FIRE HYDRANT DETAIL  
**DETAIL "B"**  
PAGE 2 OF 3



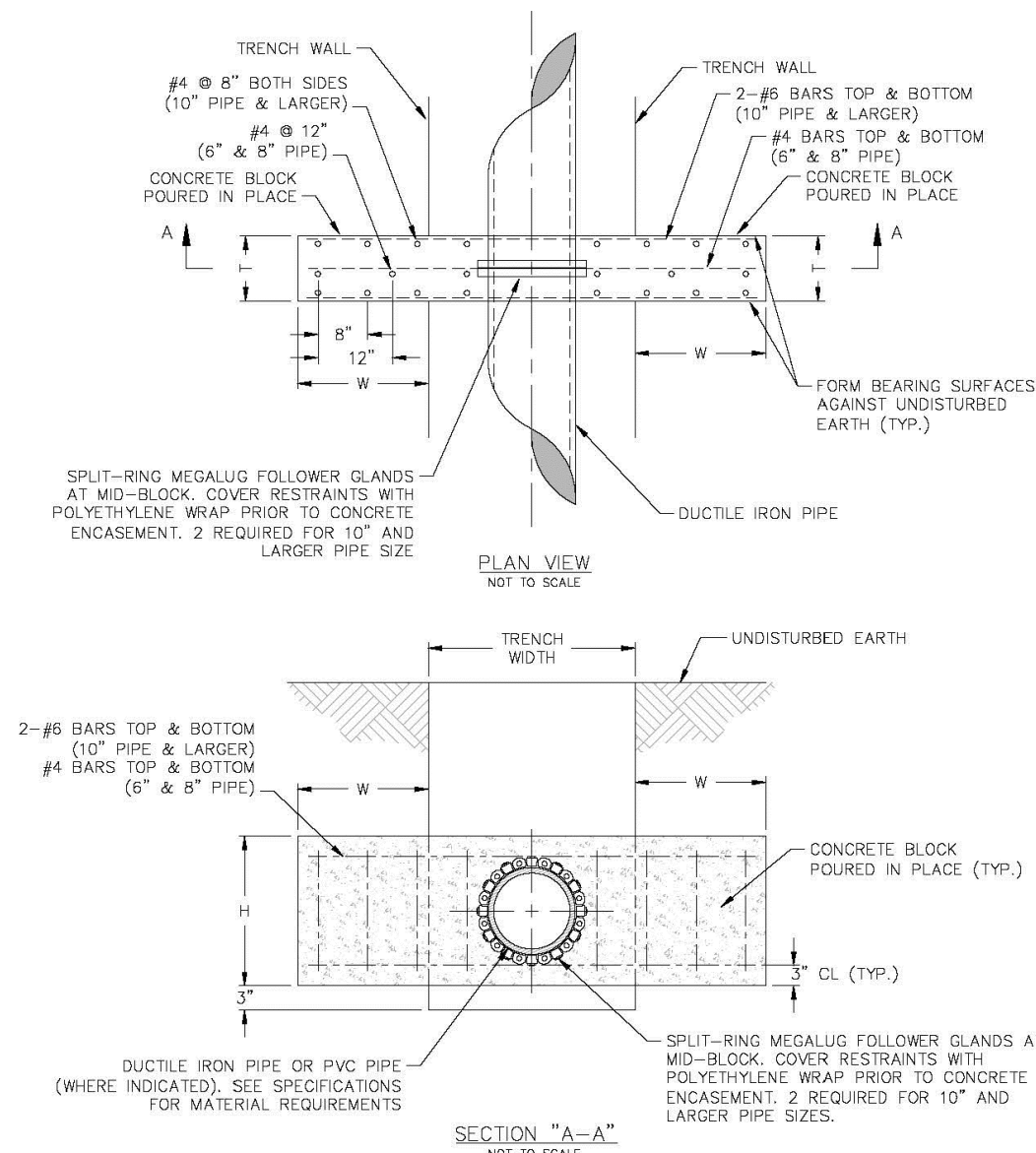
**THRUST BLOCK DIMENSIONS - INCHES**

PIPE DIA.	ALL FTGS.	TEE PLUG TAPPING		90 DEGREE BEND		45 DEGREE BEND		22-1/2 BEND		11-1/4 BEND	
		A	B	C	H	C	H	C	H	C	H
4	14	4	24	12	26	15	18	12	12	12	12
6	16	6	36	18	36	24	30	18	24	12	12
8	20	8	36	30	42	36	36	24	24	18	18
10	20	10	48	36	66	36	36	36	28	24	18
12	24	12	68	36	82	42	62	36	40	24	28

**NOTE**  
FOR FITTINGS LARGER THAN 12", SPECIAL RESTRAINT DESIGNS ARE REQUIRED.  
**HORIZONTAL THRUST BLOCKING DETAIL "C"**



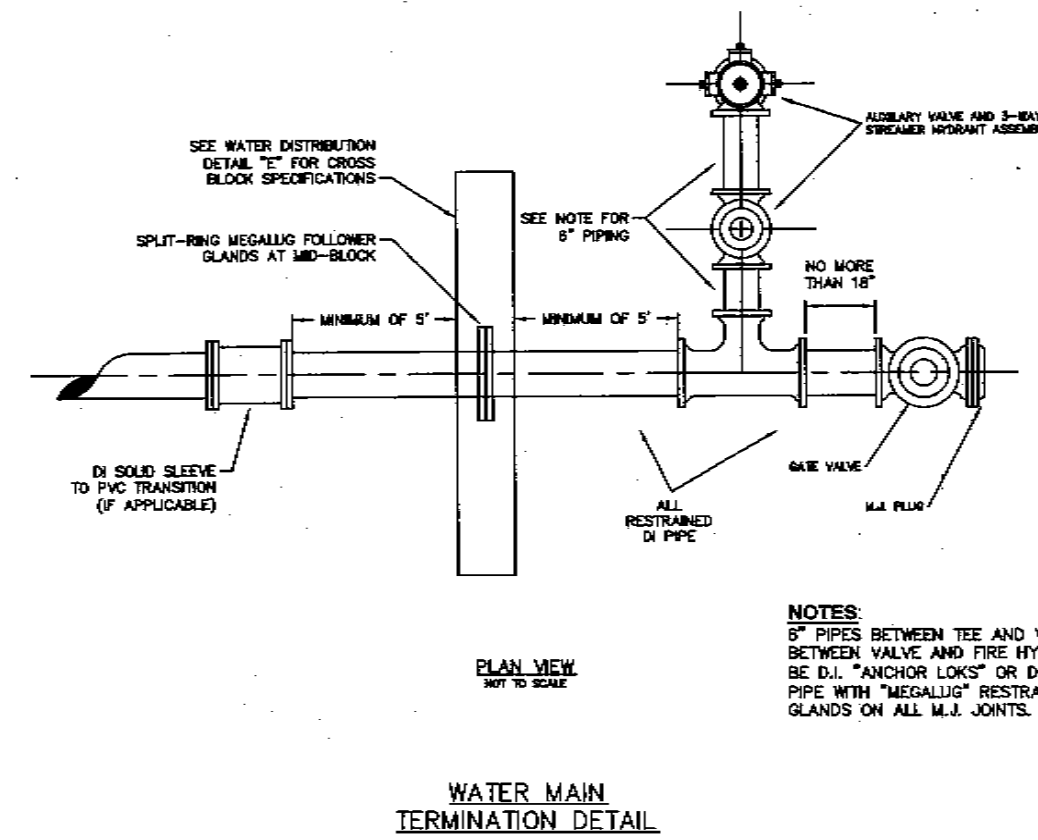
GATE VALVE DETAIL  
NOT TO SCALE  
**DETAIL "D"**



**NOTES**  
1) CONSTRUCT CROSS BLOCKS AT A MINIMUM OF 15' FROM CONNECTION POINT AND 5' FROM THE BELL END OF PIPE.  
2) CROSS BLOCKS SHALL BE PRE-POURED PRIOR TO SHUTDOWN AND CONNECTIONS.

CROSS BLOCK DIMENSIONS			
PIPE DIA. "D"	WIDTH "W"	HEIGHT "H"	THICKNESS "T"
4	12	12	12
6	24	24	12
8	24	24	12
10	36	36	18
12	36	36	18

CROSS BLOCK  
**DETAIL "E"**



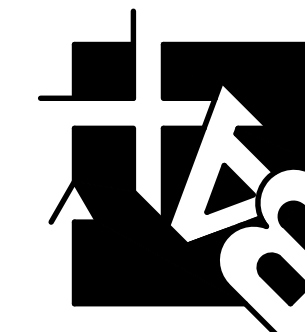
WATER MAIN TERMINATION DETAIL

PROJECT TITLE:

**SHADY CREEK  
COMMERCIAL**

Issue Date: 07/29/2022

ENGINEERING  
PLANNING  
SURVEYING  
221 Point View Blvd.  
St. Charles, MO 63301  
636-928-5562  
FAX 928-1718



DISCLAIMER OF RESPONSIBILITY  
I hereby specify that the documents intended to be authorized by my seal are limited to this sheet, and I hereby disclaim any responsibility for all other drawings, specifications, estimates, reports or other documents or instruments relating to or intended to be used for any part or parts of the architectural or engineering project or survey.

**REVISIONS**

DATE	CITY COMMENTS
09/01/22	CITY COMMENTS
10/11/22	CITY & PWS&D COMMENTS
10/17/22	CITY COMMENTS

Developer / Owner:  
JoAnn Griffith and Gary Kopadt  
8780 Highway N  
Lake Saint Louis, MO 63367  
636-544-2128

**WATER DETAILS**

P+Z No. 22-004236

Approval Date: 10/07/2022

City No. CSP22-000027

Page No.

7 of 7

**ENGINEER'S SEAL  
DOES NOT APPLY  
TO DETAILS ON  
THIS SHEET**