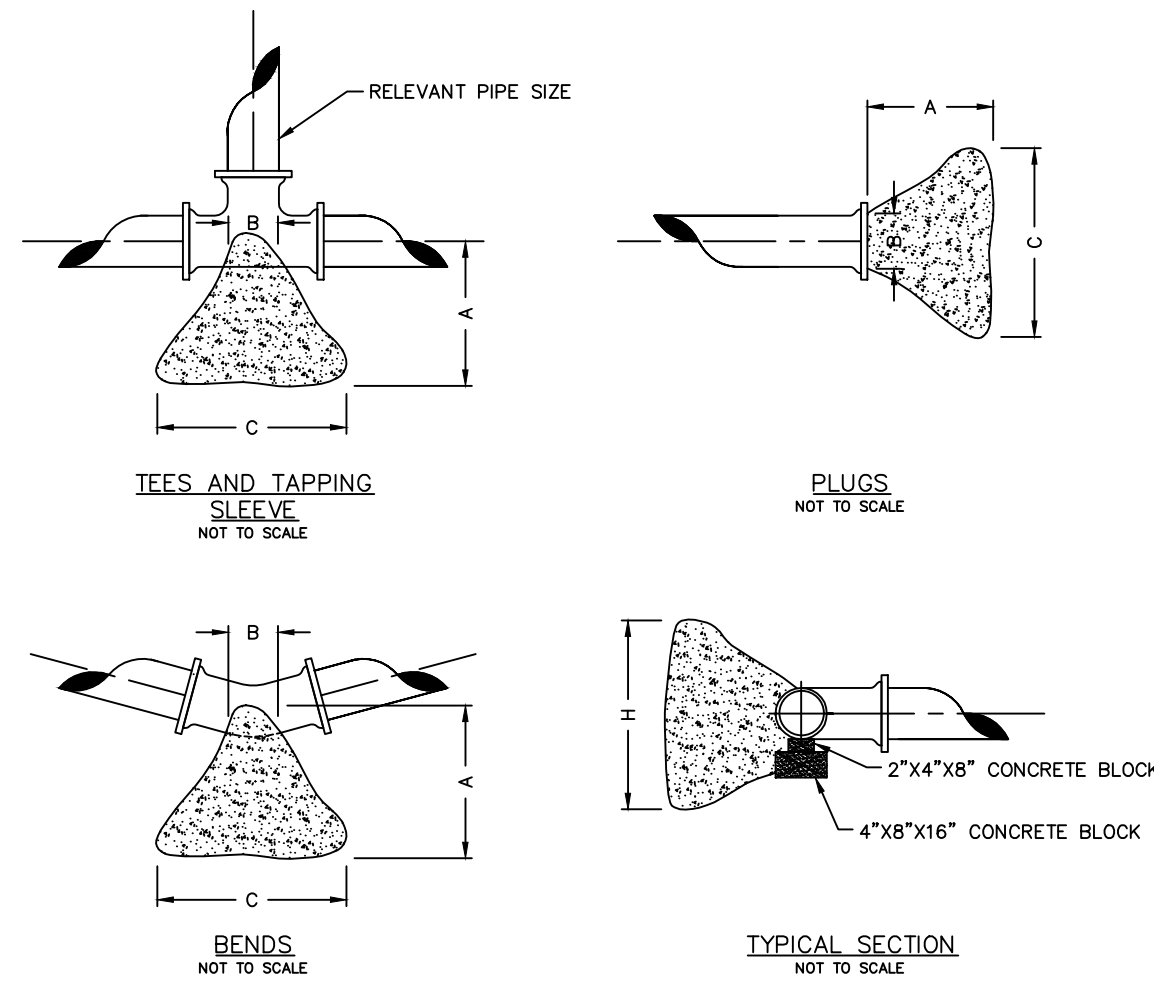


NOTE: THIS DETAIL IS FROM PWS#2



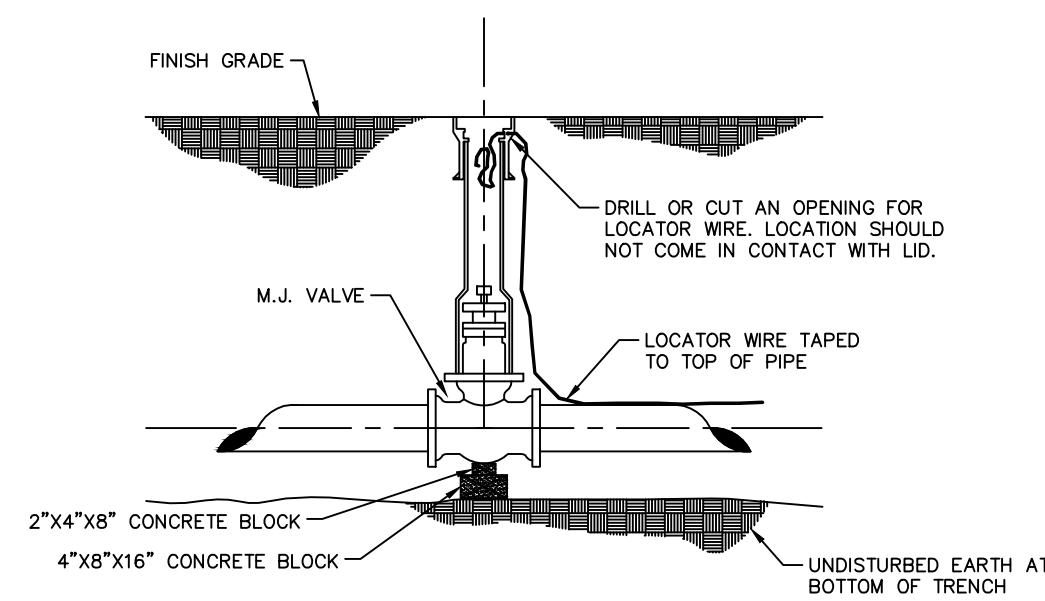
THRUST BLOCK DIMENSIONS - INCHES														
PIPE DIA.	ALL FTGS.			TEE PLUG TAPPING			90 DEGREE BEND		45 DEGREE BEND		22-1/2 BEND		11-1/4 BEND	
	A	B	C	H	C	H	C	H	C	H	C	H	C	H
4	14	4	24	12	26	15	18	12	12	12	12	12	12	12
6	16	6	36	18	36	24	30	18	24	12	12	12	12	12
8	20	8	36	30	42	36	36	24	24	18	18	18	18	18
10	20	10	48	36	66	36	36	36	28	24	18	18	18	18
12	24	12	68	36	82	42	52	36	40	24	28	18	18	18

NOTE
FOR FITTINGS LARGER THAN 12", SPECIAL RESTRAINT DESIGNS ARE REQUIRED.

HORIZONTAL THRUST BLOCKING
DETAIL "C"

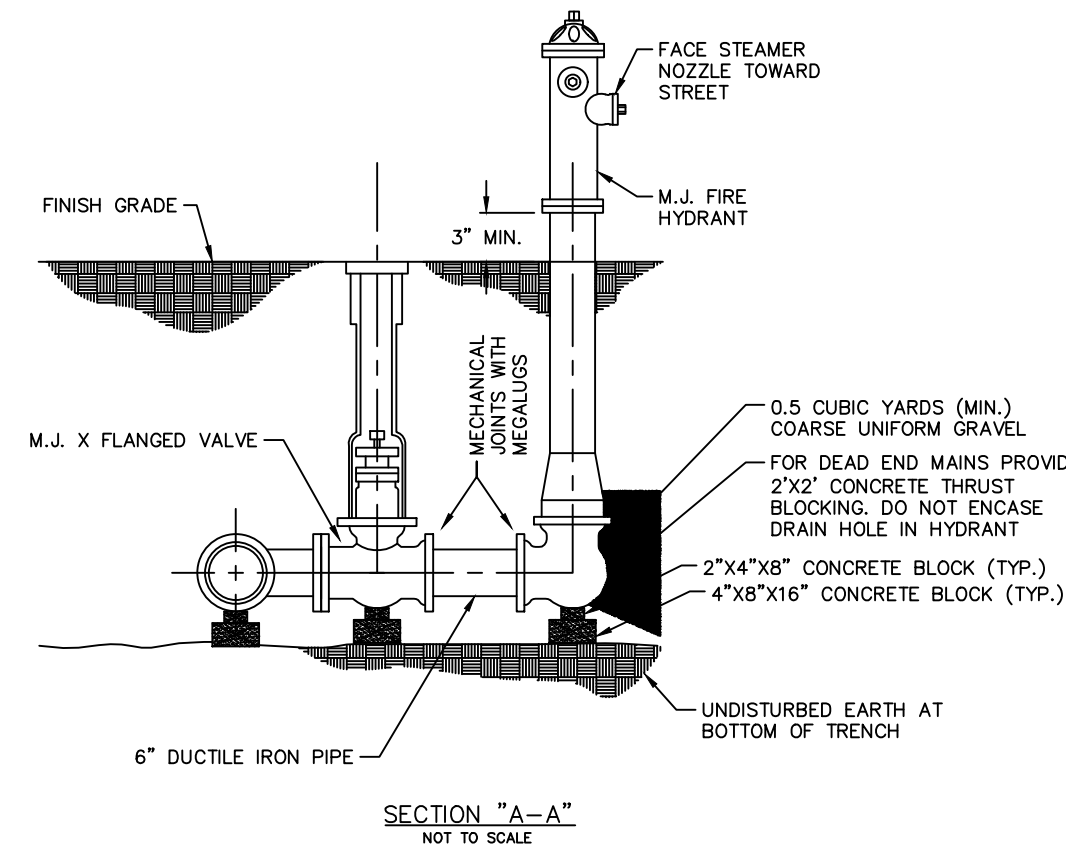
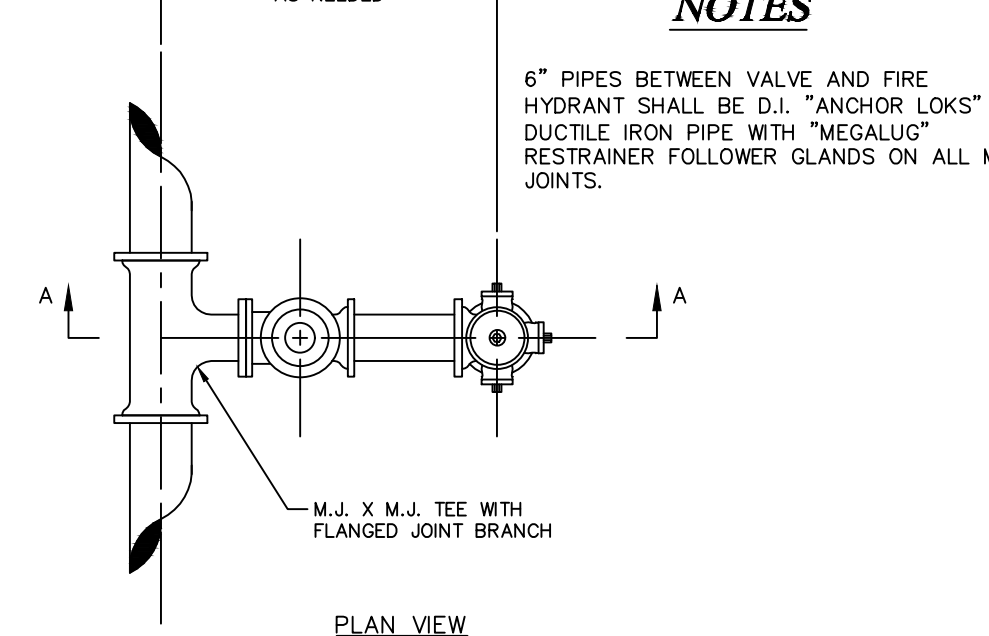
NOTE: THIS DETAIL IS FROM PWS#2

Buffalo box is an acceptable product to use.
Tyler 562-S and 564-S are acceptable products.



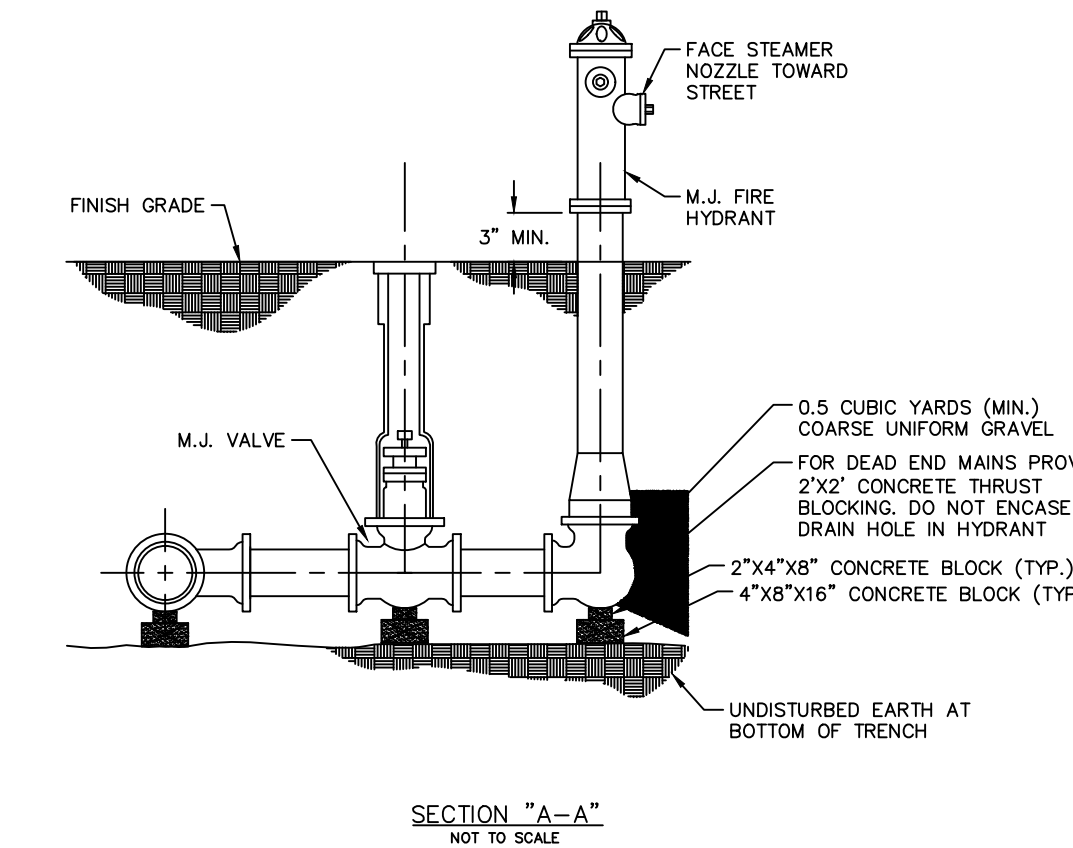
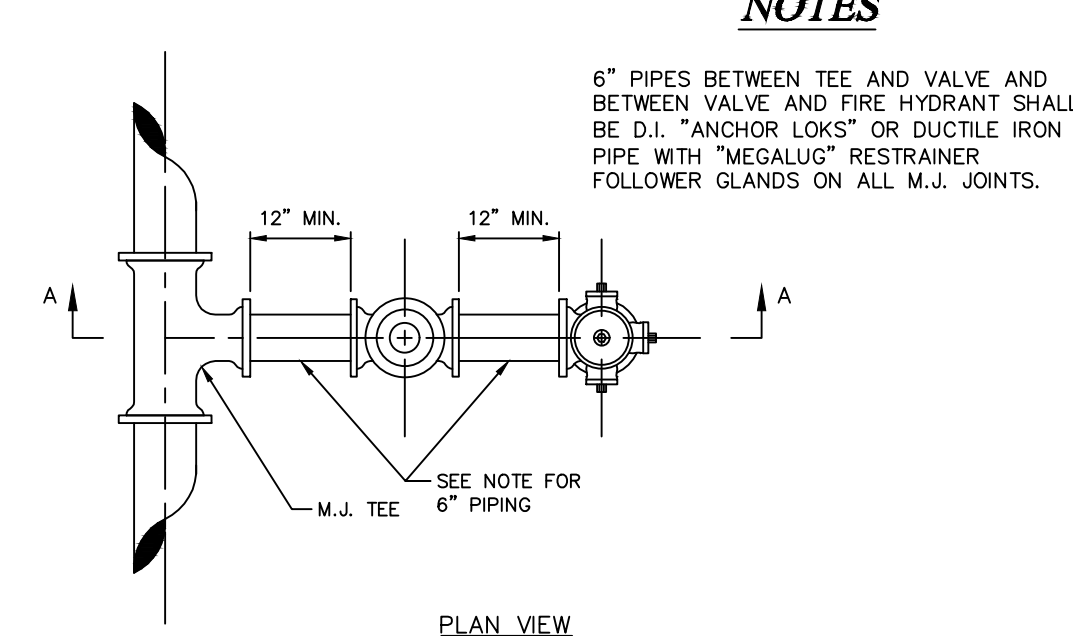
GATE VALVE DETAIL
NOT TO SCALE
DETAIL "D"

NOTE: THIS DETAIL IS FROM PWS#2



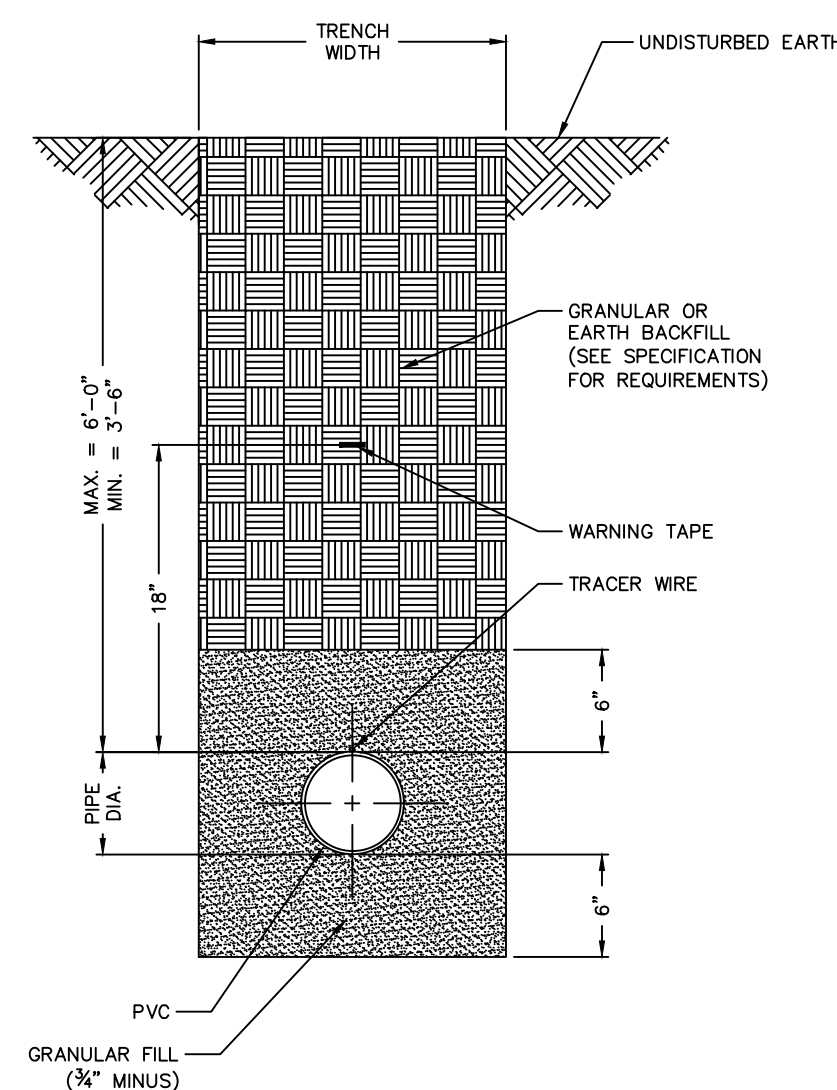
FIRE HYDRANT DETAIL
DETAIL "B"
PAGE 1 OF 3

NOTE: THIS DETAIL IS FROM PWS#2



FIRE HYDRANT DETAIL
DETAIL "B"
PAGE 2 OF 3

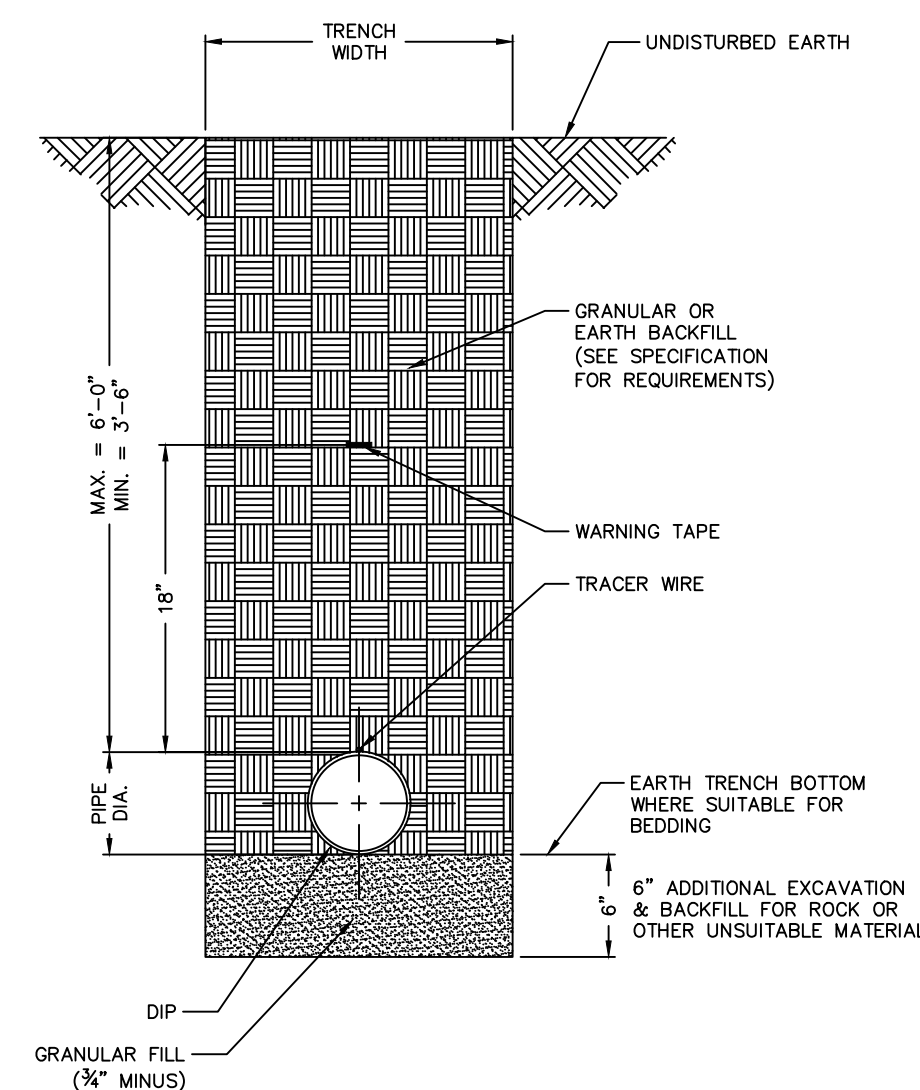
NOTE: THIS DETAIL IS FROM PWS#2



NOTES
1) SEE SPECIFICATIONS FOR ADDITIONAL DETAILS FOR BEDDING AND BACKFILL.

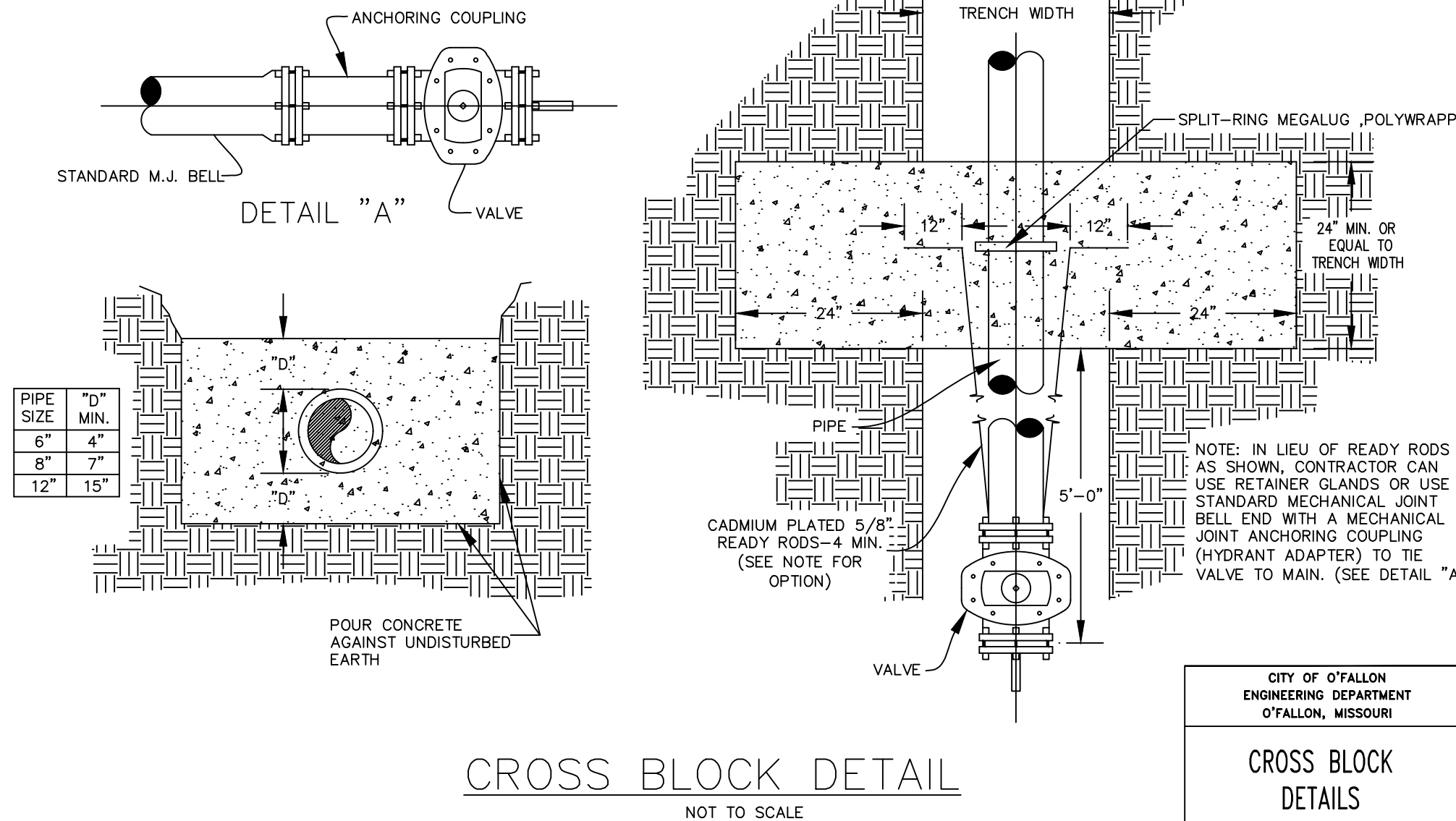
TYPICAL TRENCH SECTION FOR PVC PIPE
NOT TO SCALE
DETAIL "A"
PAGE 1 OF 2

NOTE: THIS DETAIL IS FROM PWS#2



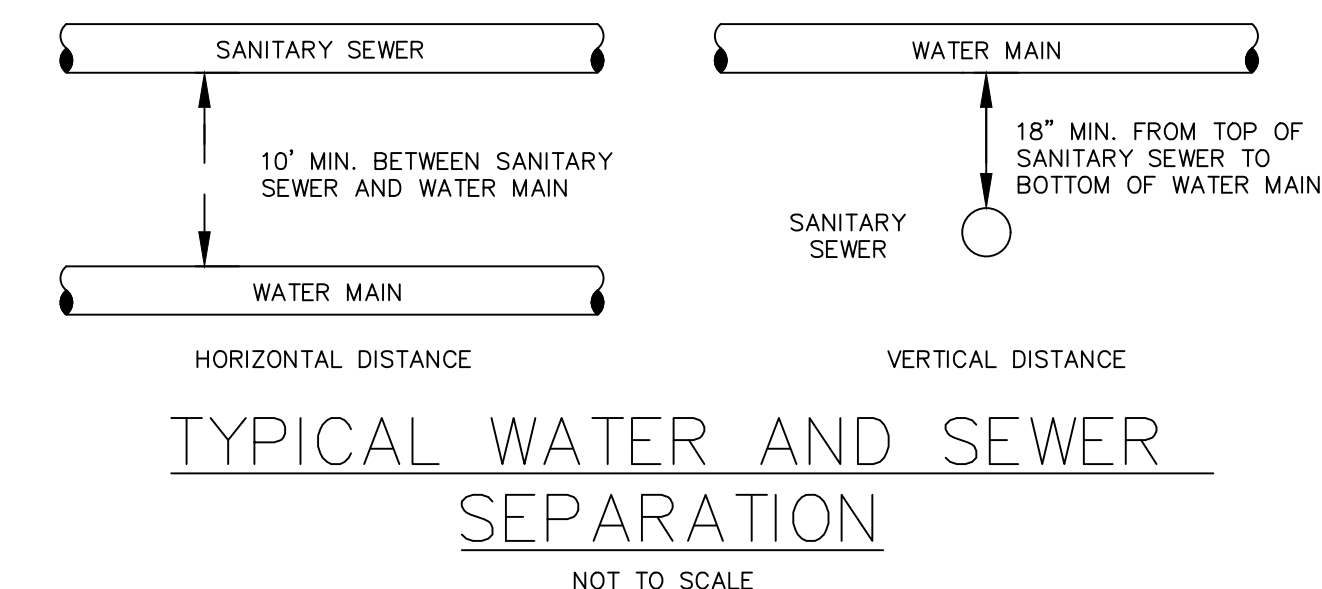
NOTES
1) POLYWRAP REQUIRED FOR DUCTILE IRON PIPE
2) SEE SPECIFICATIONS FOR ADDITIONAL DETAILS FOR BEDDING AND BACKFILL.

TYPICAL TRENCH SECTION FOR DUCTILE IRON PIPE
NOT TO SCALE
DETAIL "A"
PAGE 2 OF 2



CROSS BLOCK DETAIL
NOT TO SCALE

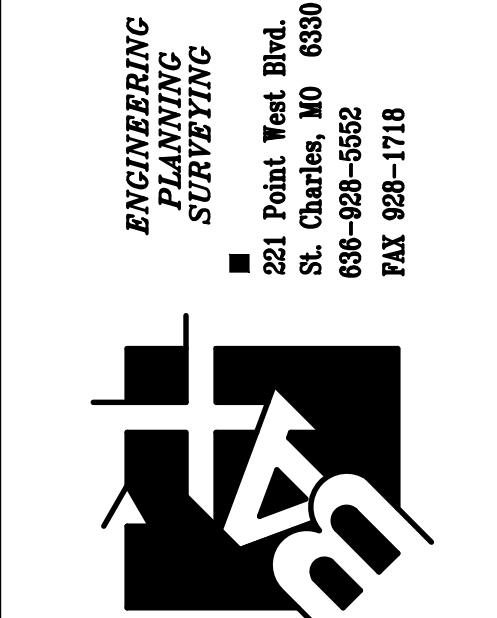
Ductile Iron Pipe installation shall follow the Ductile Iron Research Association (DIPRA) guide line.
The installation of PVC Pipe shall follow the Uni-Bell PVC Pipe Association Handbook of PVC Design and Construction.



TYPICAL WATER AND SEWER SEPARATION
NOT TO SCALE

CITY OF O'FALLON
ENGINEERING DEPARTMENT
O'FALLON, MISSOURI
WATER AND SEWER SEPARATION DETAIL

PROJECT TITLE:
**SHANE ESTATES
PHASE TWO**
#566 HIGHWAY P
CITY OF O'FALLON
ST. CHARLES COUNTY, MO. 63366



DISCLAIMER OF RESPONSIBILITY
I hereby specify that the documents intended to be authorized by my seal are limited to this sheet, and I hereby disclaim any responsibility for all other drawings, specifications, estimates, reports or other documents or instruments relating to or intended to be used for any part or parts of the architectural or engineering project or survey.

REVISIONS	
03/04/20	CITY COMMENTS
03/19/20	CITY COMMENTS
04/15/20	CITY COMMENTS
10/01/20	CLIENT COMMENTS

Developer / Owner:
ELLA REAL PROPERTY HOLDINGS, L.L.C.
428 NORTH MAIN STREET
O'FALLON, MO 63366
(636) 577-2458

WATER DETAILS

P+Z No. #19-009651
Approval Date: 11/07/2019
City No. #City number

Page No.
10 of 14

ENGINEERS SEAL DOES NOT APPLY TO CITY OF O'FALLON DETAILS ON THIS SHEET.