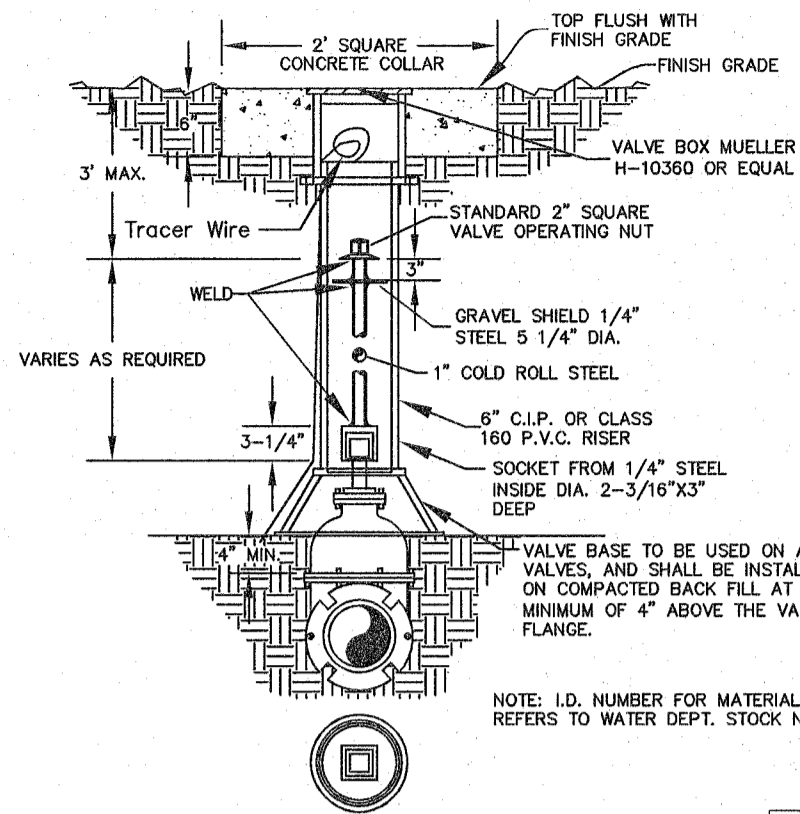


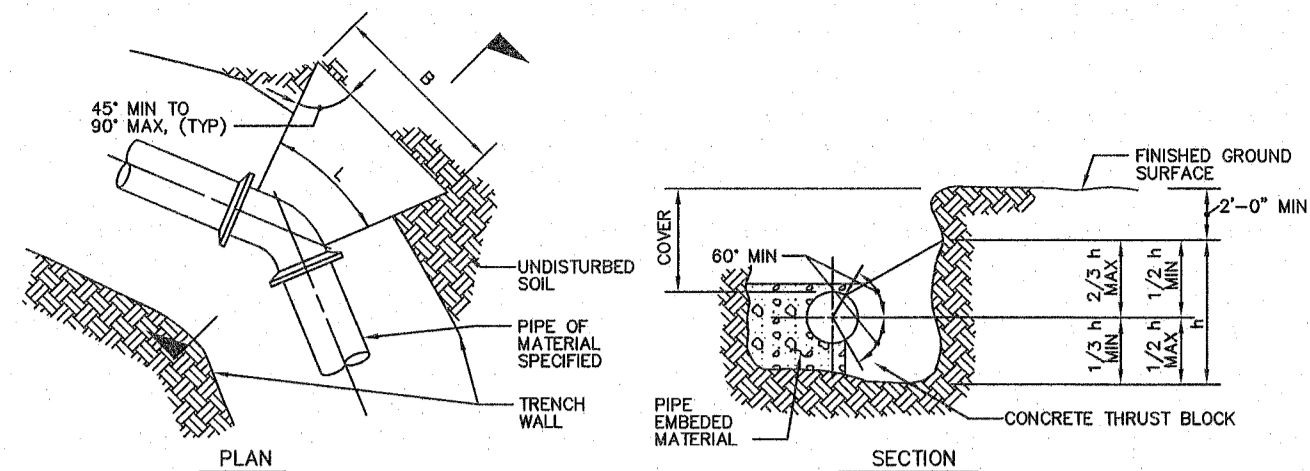
Concrete color will be in accordance with the Concrete color detail.



WATER VALVE DETAIL  
NOT TO SCALE

CITY OF O'FALLON  
ENGINEERING DEPARTMENT  
O'FALLON, MISSOURI

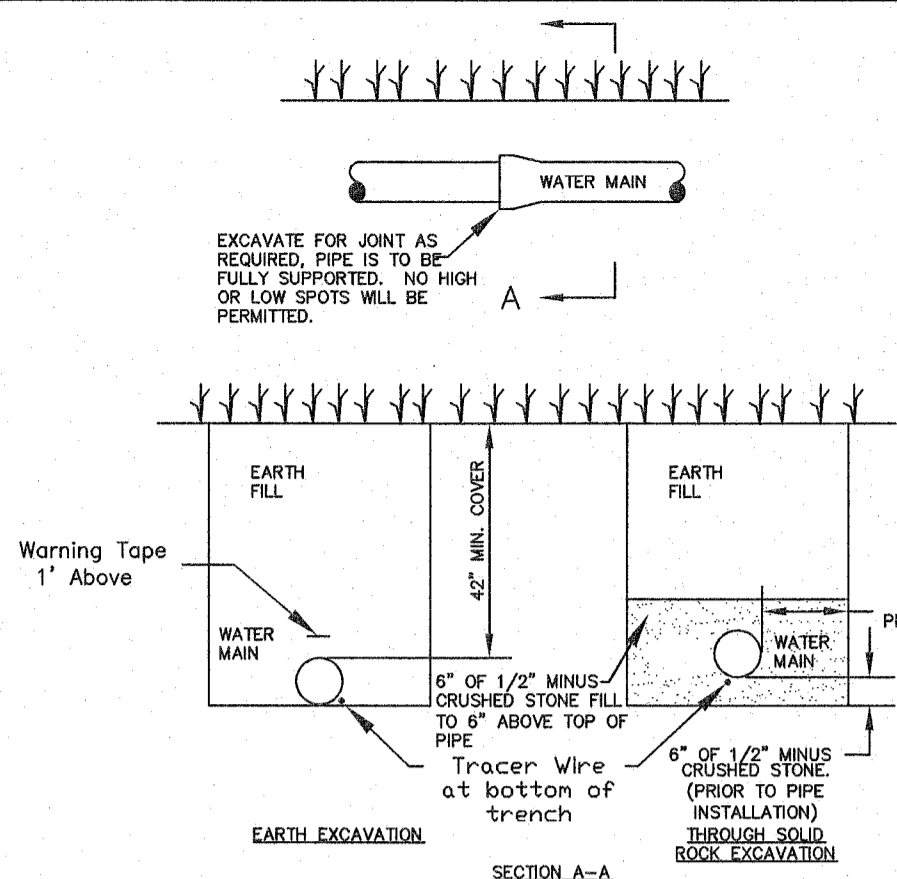
WATER  
VALVE DETAIL



CONCRETE THRUST BLOCKING  
NOT TO SCALE

- NOTES: 1. AREA OF BLOCK A = BxH. BLOCK AREAS ARE SHOWN ON GENERAL LAYOUT OR TABLE. 2. B = H = 4'-7". EXCEPT WHERE TOP OF BLOCK IS WITHIN 2 FEET FROM GROUND SURFACE, THEN B = A. 3. MINIMUM BLOCK DIMENSION (B & H) SHALL BE AT LEAST 24" OF PIPE OR 1 FOOT FOR PIPE 10" OR LESS. 4. THE BOTTOM OF THE BLOCK SHALL EXTEND AT LEAST 12" BELOW THE BOTTOM OF THE TRENCH IN ALL CASES. 5. FITTING LENGTH MINUS CLEARANCE FOR BELLS. 6. DETAIL IS SHOWN FOR CAST IRON PIPE. DETAIL IS SIMILAR FOR OTHER TYPES OF PIPE. 7. DIMENSIONS FOR THRUST BLOCKS FOR FIRE HYDRANT ASSEMBLY ARE SHOWN FIRE HYDRANT ASSEMBLY DETAIL.

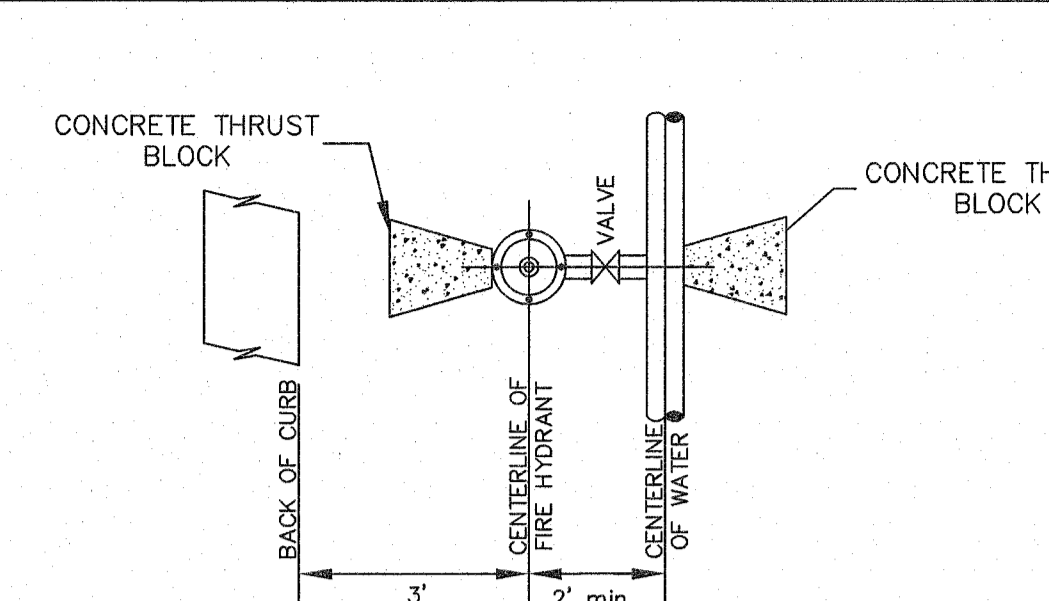
Table with columns: SIZE, BEND, THRUST AREA, B, H. Rows include 16" 11 1/2", 18" 11 1/2", 24" 11 1/2", 30" 11 1/2", 36" 11 1/2", 42" 11 1/2", 48" 11 1/2", 54" 11 1/2", 60" 11 1/2".



TYPICAL WATER MAIN  
INSTALLATION DETAIL  
NOT TO SCALE

CITY OF O'FALLON  
ENGINEERING DEPARTMENT  
O'FALLON, MISSOURI

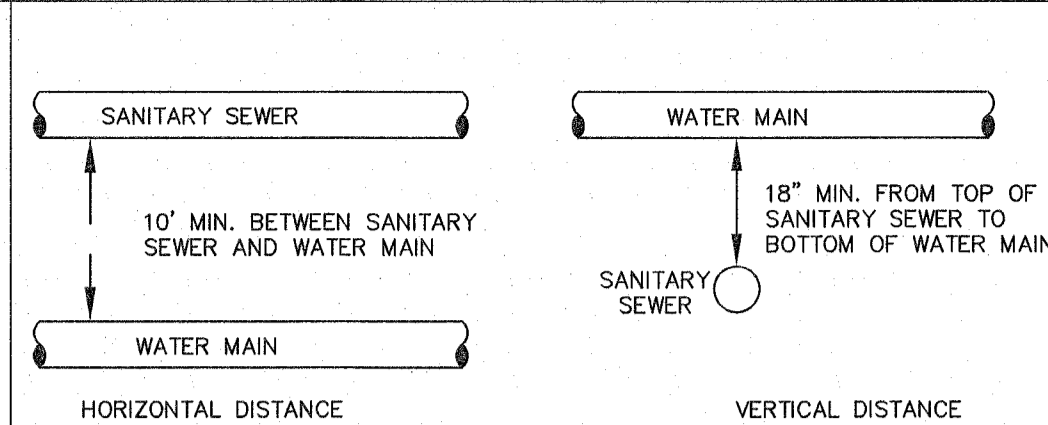
WATER MAIN  
INSTALLATION DETAIL



TYPICAL WATER MAIN AND FIRE  
HYDRANT LOCATIONS  
NOT TO SCALE

CITY OF O'FALLON  
ENGINEERING DEPARTMENT  
O'FALLON, MISSOURI

WATER MAIN  
FIRE HYDRANT DETAIL

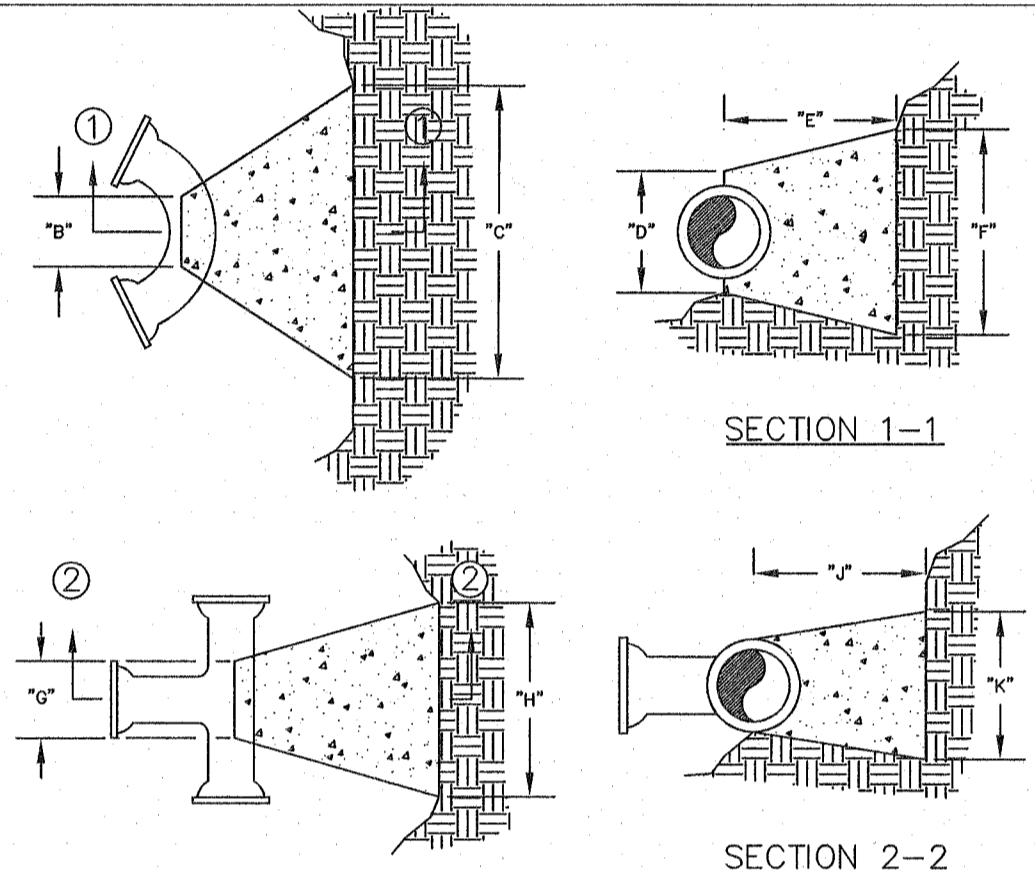


TYPICAL WATER AND SEWER  
SEPARATION  
NOT TO SCALE

CITY OF O'FALLON  
ENGINEERING DEPARTMENT  
O'FALLON, MISSOURI

WATER AND SEWER  
SEPARATION DETAIL

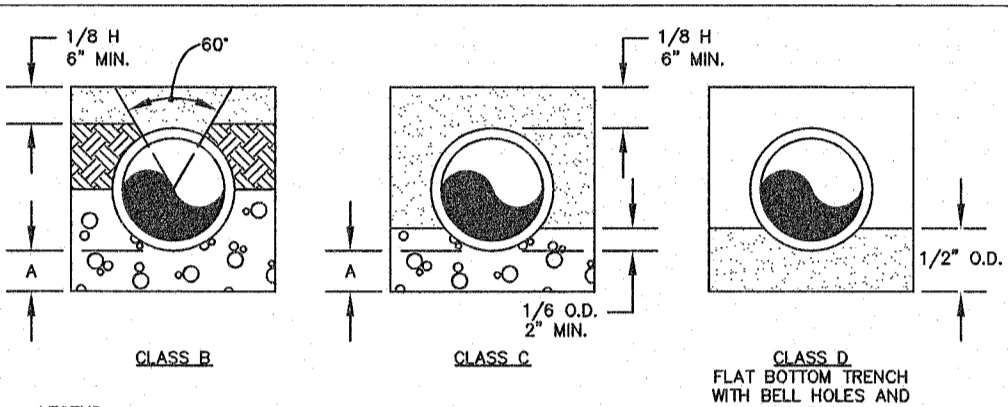
Tables for Backing Blocks: BENDS and TEES. Columns include dimensions for various pipe sizes and fittings.



BACKING BLOCKS  
NOT TO SCALE

CITY OF O'FALLON  
ENGINEERING DEPARTMENT  
O'FALLON, MISSOURI

BACKING BLOCK  
DETAILS AND LOCATIONS

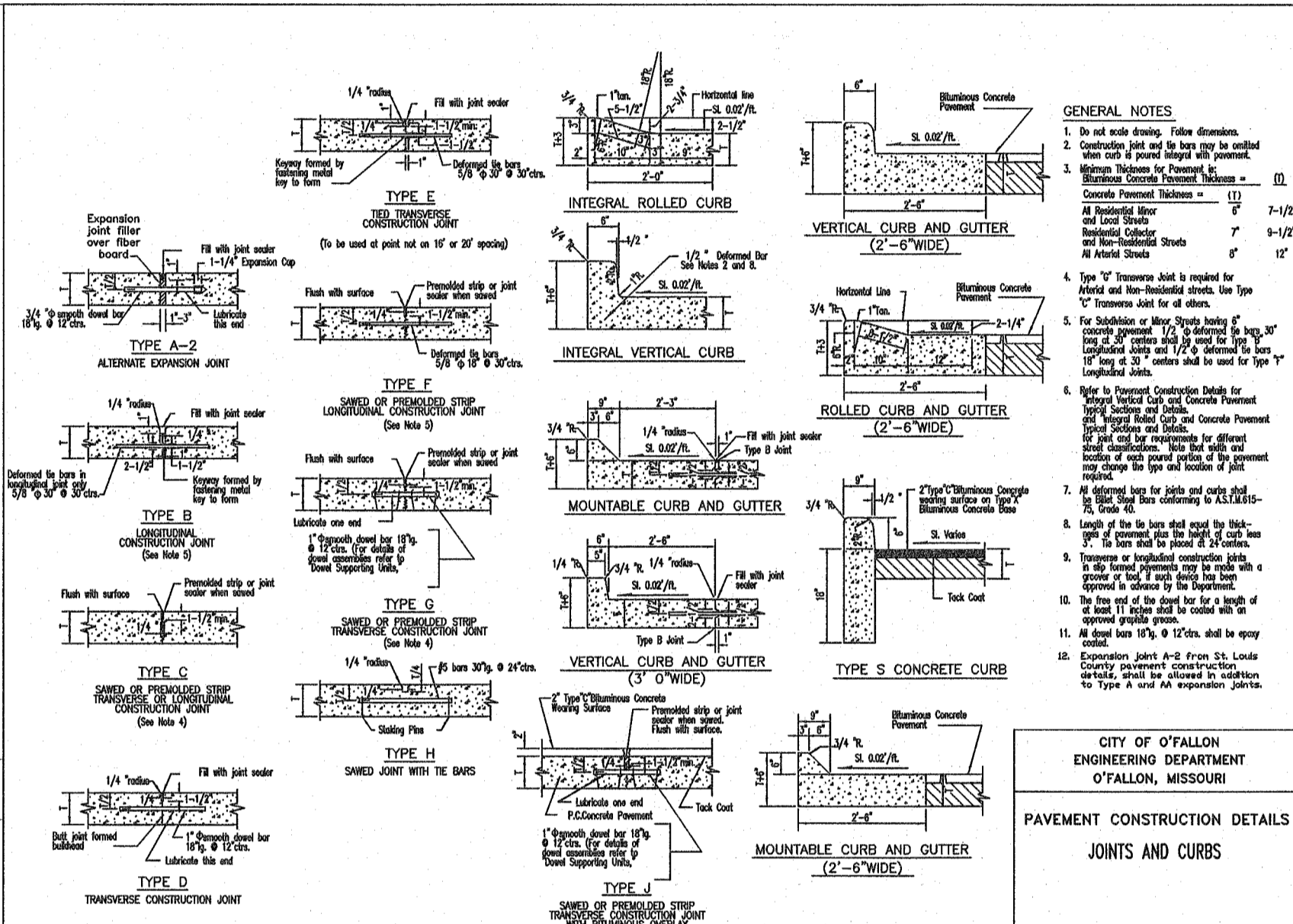


WATER MAIN EMBEDDED  
NOT TO SCALE

Table of Embedded Depths Below Pipe with columns for L.D., MIN. SOIL, MIN. ROCK, and MIN. COVER.

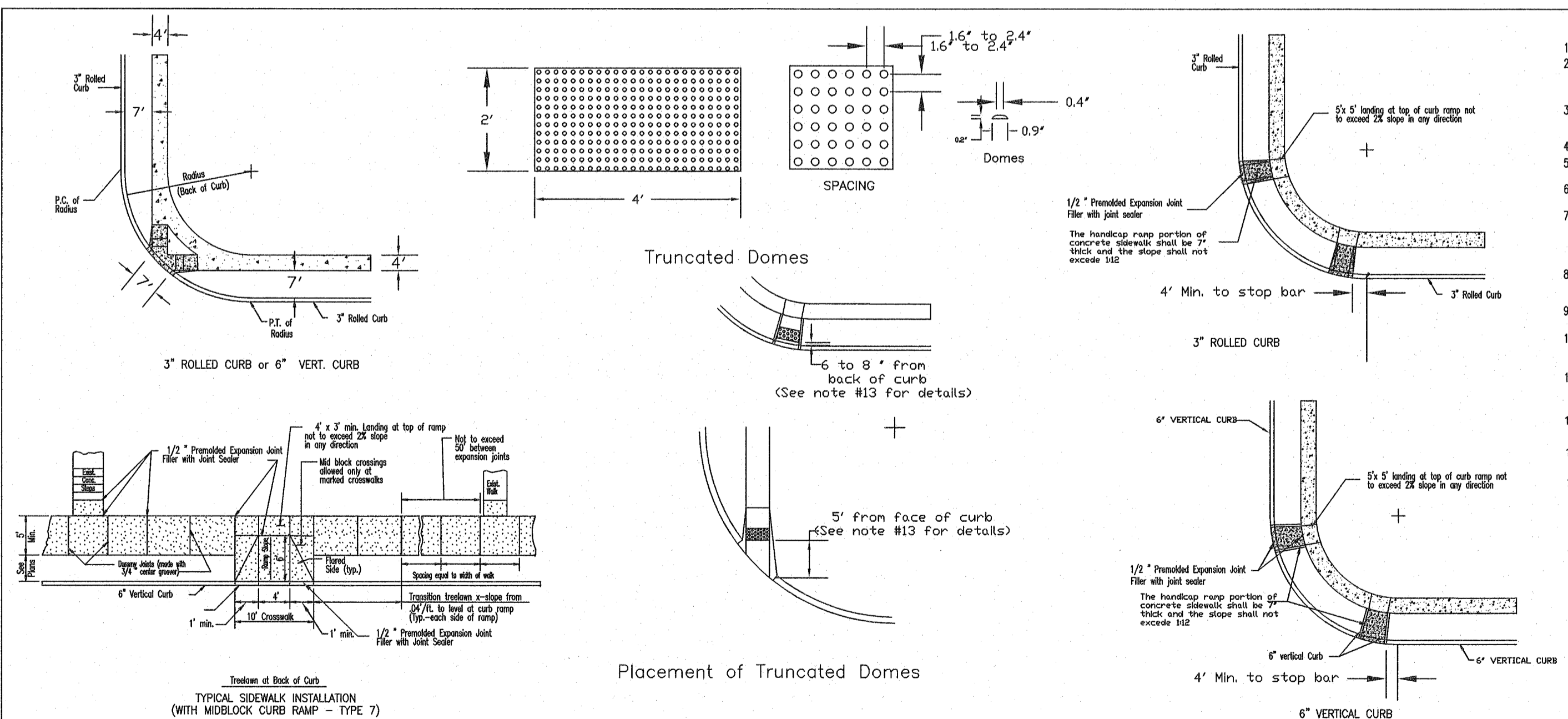
CITY OF O'FALLON  
ENGINEERING DEPARTMENT  
O'FALLON, MISSOURI

WATER MAIN  
EMBEDDED



CITY OF O'FALLON  
ENGINEERING DEPARTMENT  
O'FALLON, MISSOURI

PAVEMENT CONSTRUCTION DETAILS  
JOINTS AND CURBS



- GENERAL NOTES: 1. Do not scale drawing. Follow dimensions. 2. Sidewalk and sidewalk curb ramps shall be constructed in accordance with these details and the current approved Missouri with Disabilities Act Accessible Guidelines (MAG). 3. Minimum sidewalk width along 6" vertical curb shall be 5 feet. Minimum sidewalk width along 3' rolled curb shall be 4 feet. 4. Maximum sidewalk cross slope 0.02%/ft. 5. All sidewalk sections shall be 4" thick, except where indicated as 7" thick by shaded portions shown on details. 6. Where curb ramp meets pavement, ballnose will not be permitted. 7. If integral concrete curb is constructed, strike a dummy joint across bottom of ramp at curb line. If concrete curb is formed-in, block out pavement to provide full depth curb across ramp from outer point of curb taper to outer point of curb taper. 8. For pavement longitudinal and transverse joints and dowel and tie bar requirements and dimensions, refer to the Pavement Construction Details for "Joints and Curb". 9. For roadway cross slopes, pavement types, and thicknesses, refer to Standard Detail Sections. 10. The intersection of two sidewalks or the intersection of a sidewalk and a driveway may serve as a wheelchair passing space on sidewalks less than 5 feet wide. 11. All curb ramps shall have a detectable warning complying with Americans with Disabilities Act Accessibility Guidelines (AGWG). 12. All ramps must line up with the corresponding ramps on the other side of the street or intersection. 13. All truncated domes shall run parallel to the road that it's crossing. 14. Truncated warning domes shall not be stamped and will be an ADA approved product.

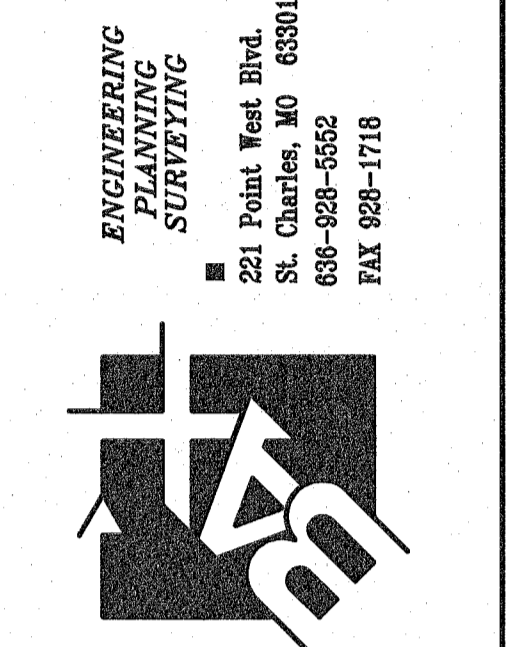
CITY OF O'FALLON  
ENGINEERING DEPARTMENT  
O'FALLON, MISSOURI

PAVEMENT CONSTRUCTION DETAILS  
CONCRETE SIDEWALK  
AND CURB RAMPS

Ductile Iron Pipe installation shall follow the Ductile Iron Research Association (DIPRA) guide line. The Installation of PVC Pipe shall follow the Uni-Bell PVC Pipe Association Handbook of PVC Design and Construction.

ENGINEERS SEAL DOES NOT APPLY  
TO DETAILS ON THIS SHEET.

PROJECT TITLE:  
SHANE ESTATES  
#572 HIGHWAY P  
CITY OF O'FALLON  
ST. CHARLES COUNTY, MO. 63366  
Box Project # 97-9209C Issue Date: 05/15/2018



DISCLAIMER OF RESPONSIBILITY  
I hereby specify that the documents intended to be authorized by my seal are limited to this sheet, and I hereby disclaim any responsibility for all other drawings, specifications, estimates, reports or other documents or instruments relating to or intended to be used for any part or parts of the architectural or engineering project or survey.

REVISIONS table with columns for date, description, and author.

Developer / Owner:  
ELLA REAL PROPERTY HOLDINGS, L.L.C.  
428 NORTH MAIN STREET  
O'FALLON, MO 63366  
(636) 577-2458  
DETAILS

P+Z No. 18-000613  
Approval Date: 04/05/2018  
Page No. 10 of 12