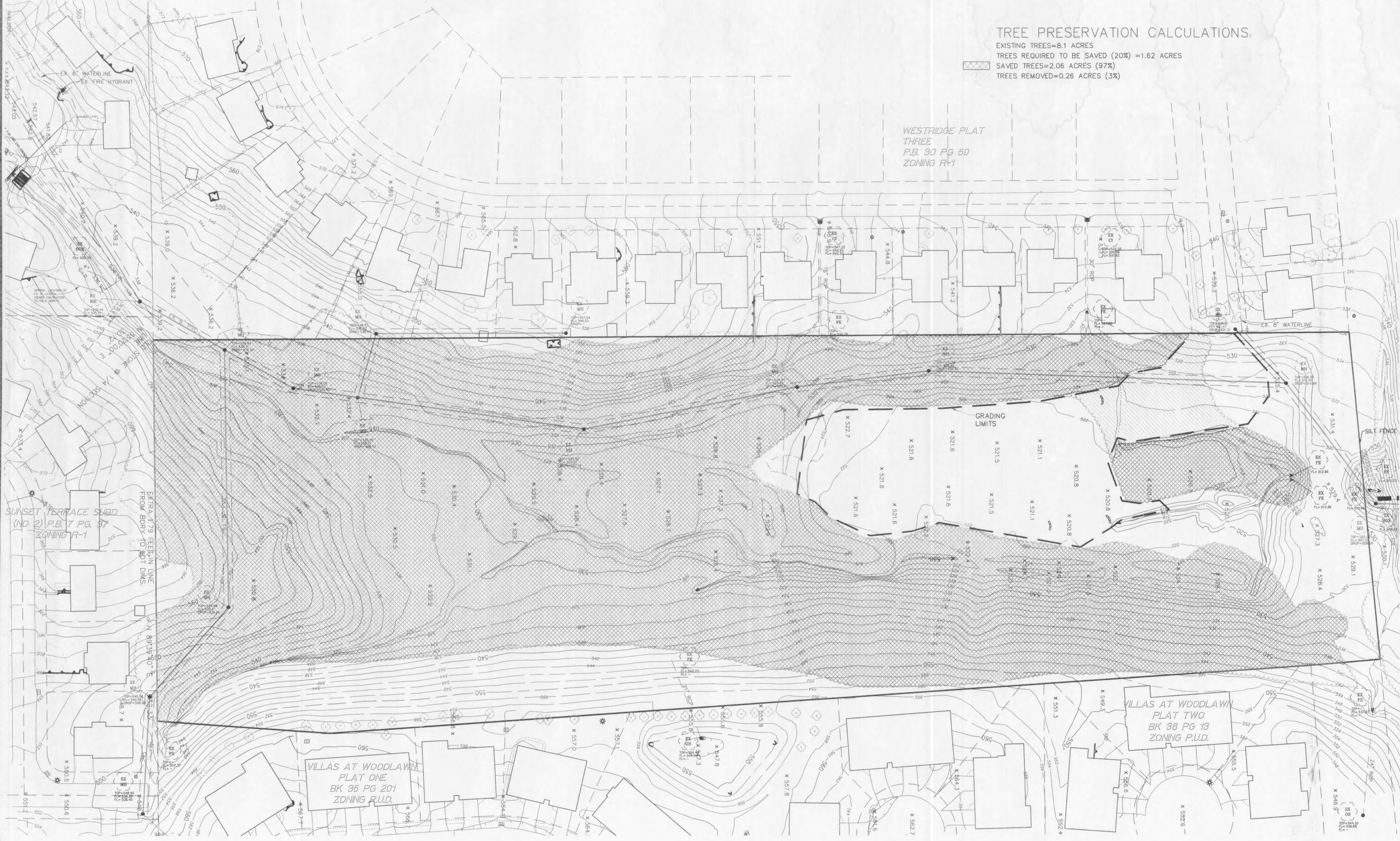


TREE PRESERVATION CALCULATIONS:

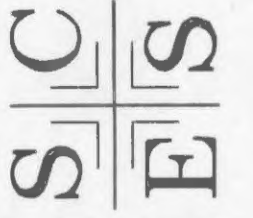
EXISTING TREES=8.1 ACRES
 TREES REQUIRED TO BE SAVED (20%) =1.62 ACRES
 SAVED TREES=2.06 ACRES (97%)
 TREES REMOVED=0.26 ACRES (3%)

WESTRIDGE PLAT
 THREE
 P.B. 30 PG 59
 ZONING R-1



SHEFFIELD FOREST
 TREE PRESERVATION PLAN
 GRADING PLAN

ST. CHARLES ENGINEERING & SURVEYING, INC.
 801 S. FIFTH STREET, SUITE 202
 ST. CHARLES, MO 63301
 TEL: (636) 947-0607 FAX: (636) 947-2448



ORDER NO. 08-1656
 DATE 08/09/05