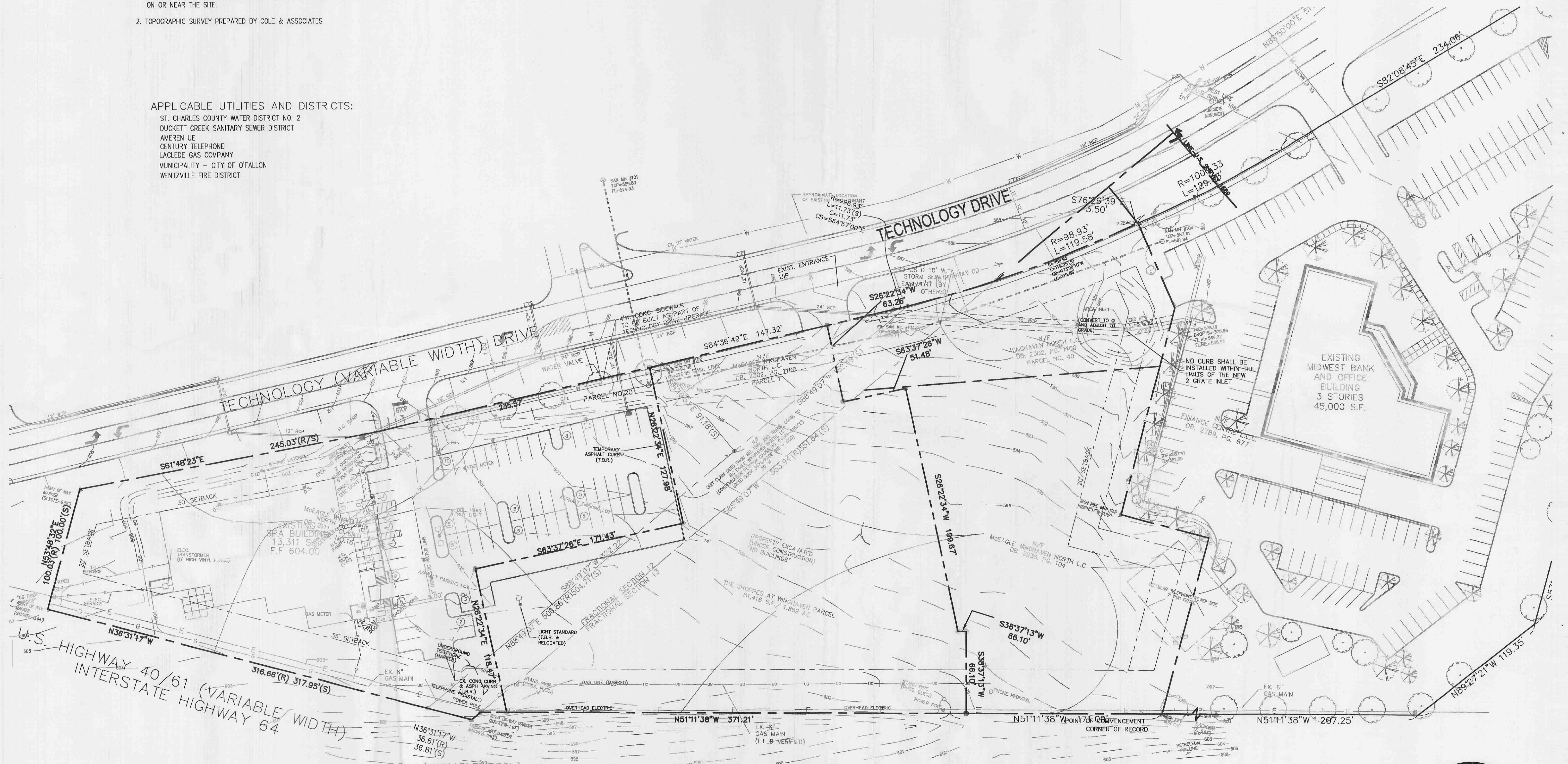
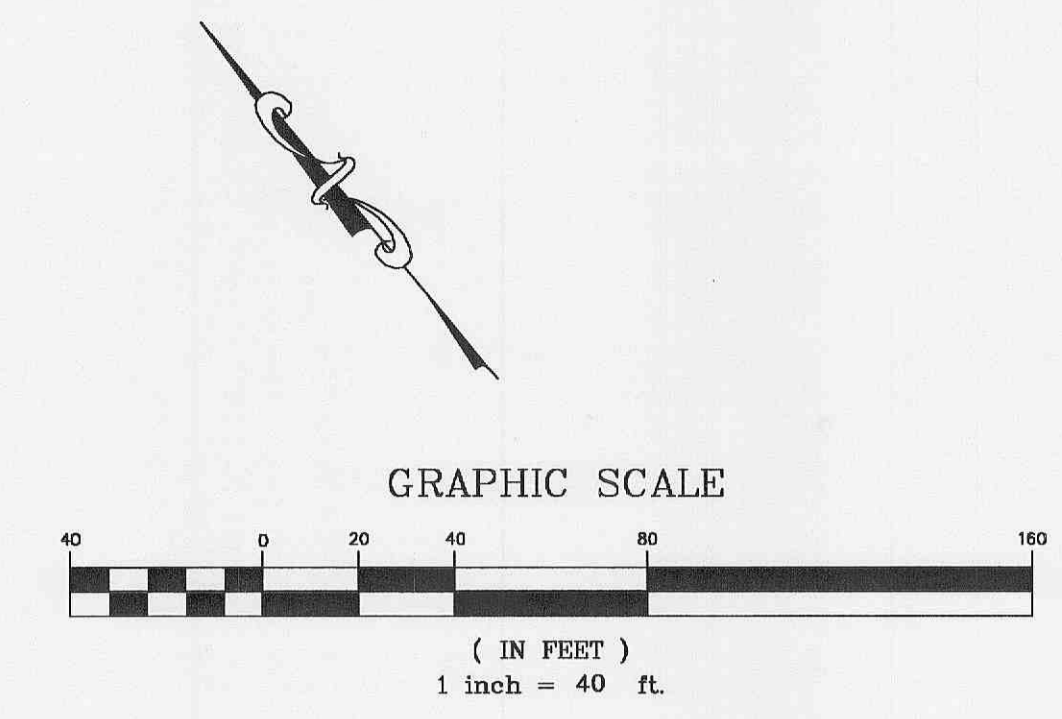


GENERAL NOTES:

- IT SHALL BE THE CONTRACTOR'S RESPONSIBILITY TO FIELD VERIFY THE EXACT HORIZONTAL AND VERTICAL LOCATIONS AND SIZES OF ALL EXISTING UTILITIES, WHETHER SHOWN OR NOT SHOWN ON THIS PLAN, PRIOR TO THE START OF ANY CONSTRUCTION. TOPOGRAPHICAL INFORMATION SHOWN ON THIS PLAN WERE TAKEN FROM SURVEY INFORMATION AND EXISTING RECORDS AND UTILITY MAPS MADE AVAILABLE TO THE ENGINEER. THEREFORE THE LOCATIONS AND SIZES SHALL BE CONSIDERED APPROXIMATE ONLY. OTHER UTILITIES NOT SHOWN ON THIS DRAWING MAY EXIST ON OR NEAR THE SITE.
- TOPOGRAPHIC SURVEY PREPARED BY COLE & ASSOCIATES

APPLICABLE UTILITIES AND DISTRICTS:

- ST. CHARLES COUNTY WATER DISTRICT NO. 2
- DUCKETT CREEK SANITARY SEWER DISTRICT
- AMEREN UE
- CENTURY TELEPHONE
- LACLEDE GAS COMPANY
- MUNICIPALITY - CITY OF FALLON
- WENTZVILLE FIRE DISTRICT



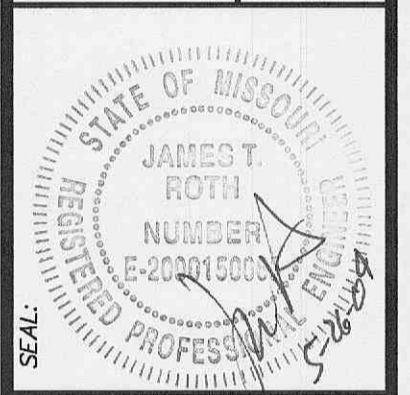
HIGHWAY 40 RAMP
U.S. HIGHWAY 40/61 (VARIABLE WIDTH)
INTERSTATE HIGHWAY 64



DATE	REVISIONS
3/20/04	CITY REVIEW COMMENTS

DEVELOPER/OWNER:
MCEAGLE DEVELOPMENT COMPANY
1001 BOARDWALK SPRINGS PLACE
O'FALLON, MO 63386
636-561-9300

THE PROFESSIONAL ENGINEER'S SIGNATURE AND PERSONAL SEAL APPEAR HEREON ASSUMES RESPONSIBILITY ONLY FOR WHAT APPEARS ON THIS PAGE, AND DISCLAIMS SPECIFIC LIABILITY FOR ANY OTHER DOCUMENTS OR INSTRUMENTS NOT SPECIALLY REFERENCED. ESTIMATES, REPORTS, OR OTHER DOCUMENTS NOT SPECIALLY REFERENCED ARE THE PROPERTY OF THE ENGINEER AND ARE NOT TO BE USED FOR ANY PART OF THE PROJECT, IN WHOLE OR IN PART, WITHOUT THE WRITTEN CONSENT OF THE ENGINEER.



SHOPPES AT WINGHAVEN

DEMOLITION PLAN

Cole & Associates Inc.
Planning • Civil Engineering • Land Surveying
10777 Sunset Office Drive, Suite 10
St. Louis, MO 63127 (314) 984-9887 FAX: 984-0587
Email: info@colesti.com

DESIGNED BY: RJM
DRAWN BY: RJM
CHECKED BY: JTR
DATE: 02/13/04

Job Number
03-303
Sheet Number
C3.0

CALL 1-800-DIG-RITE (MISSOURI ONE CALL) TO HAVE LOCATIONS MARKED IN THE FIELD (SUBSCRIBING UTILITIES REQUIRE 48 HOURS NOTICE PRIOR TO CONSTRUCTION).

FILE # 9831.41