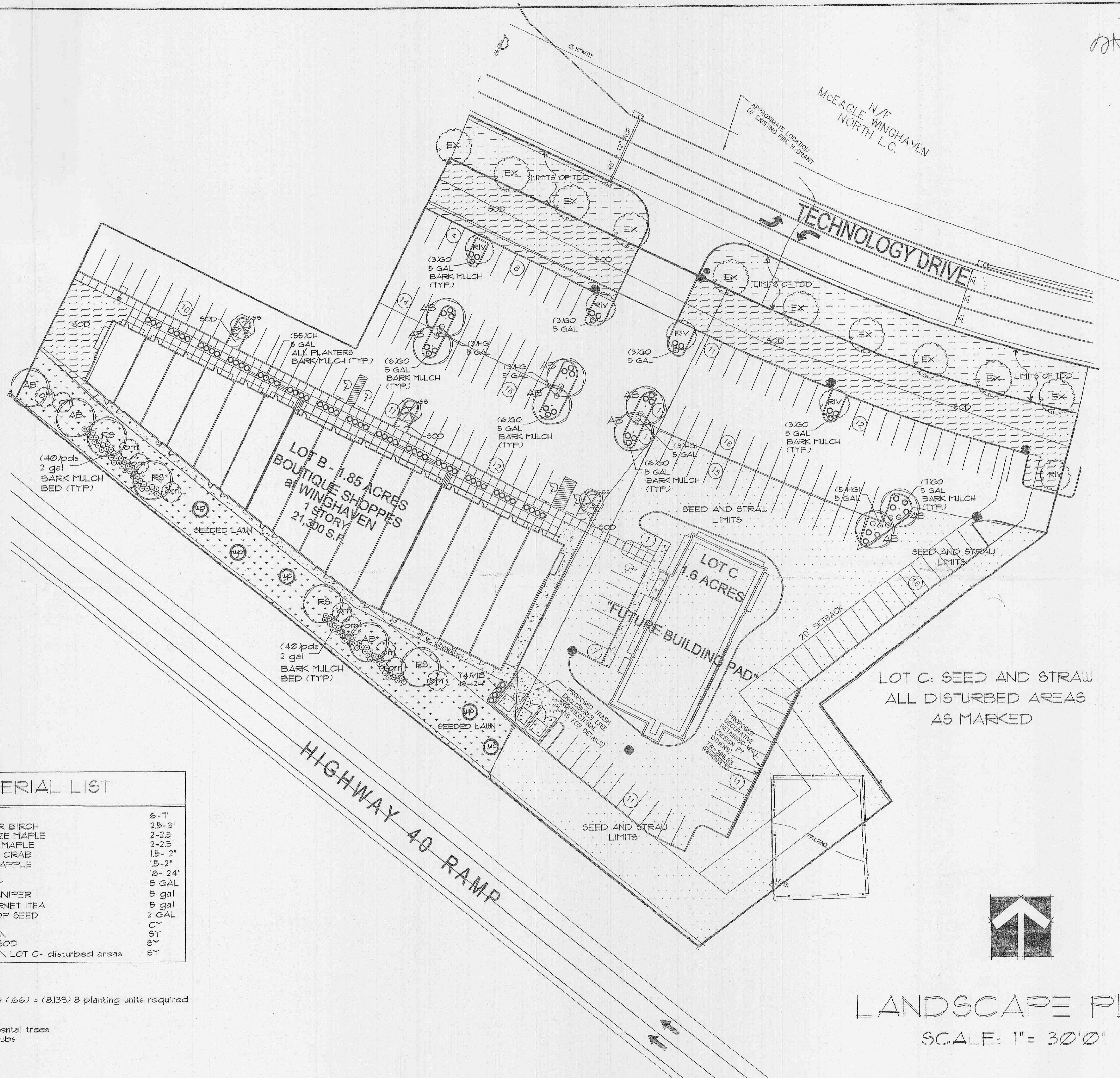


RECEIVED
APR 08 2004



PLANT MATERIAL LIST			
up	5	WHITE PINE	6'-11"
RIV	5	CLUMP RIVER BIRCH	2.5-3'
AB	11	AUTUMN BLAZE MAPLE	2-2.5'
RS	4	RED SUNSET MAPLE	2-2.5'
ss	3	SPRINGSNOW CRAB	1.5-2'
orn	10	FEAR-CRABAPPLE	1.5-2'
VIB	4	VIBURNUM	18-24'
CH	55	CHINA HOLLY	5 GAL
GO	37	GREY OWL JUNIPER	5 GAL
HGI	14	HENRY'S GARNET ITEA	5 GAL
pd6	80	FRAIRIE DROP SEED	2 GAL
	54	BARK MULCH	CT
	1480	SEEDED LAWN	ST
	1755	BLUEGRASS SOD	ST
	6250	SEEDED LAWN LOT C- disturbed areas	ST

HTCH R-0-W
(66) PLANTING UNIT EVERY 30' FT.
370 LNFT. / 30' = 12.3 planting units x (66) = (813.9) 8 planting units required
TYPICAL PLANTING UNIT
1 CANOPY 2-2.5' x 8' = 8 trees
2 ORNAMENTAL 1.5-2' x 8' = 16 ornamental trees
10 SHRUB 18-24' 2 GAL x 8' = 80 shrubs

NOTICE
This drawing is the property of A. Waldbart and Sons Nursery. Each plan prepared by our firm involves original thought and ideas; therefore, we reserve the copyright to any design prepared by our staff. Use of this plan in whole or in part for any other project without our written permission is prohibited.

LANDSCAPE PLAN
SCALE: 1" = 30' 0"

SHOPPES @ WINGHAVEN
PARIC
Date 01-30-04 Revised 02-02-04 Sheet L-1
Scale 1" = 30' 0" Approved 04-01-04 Drawn By JFP

895-4589
A. WALDBART AND SONS
Nursery
Established 1872
Landscape Designers, Landscape Contractors & Nurserymen