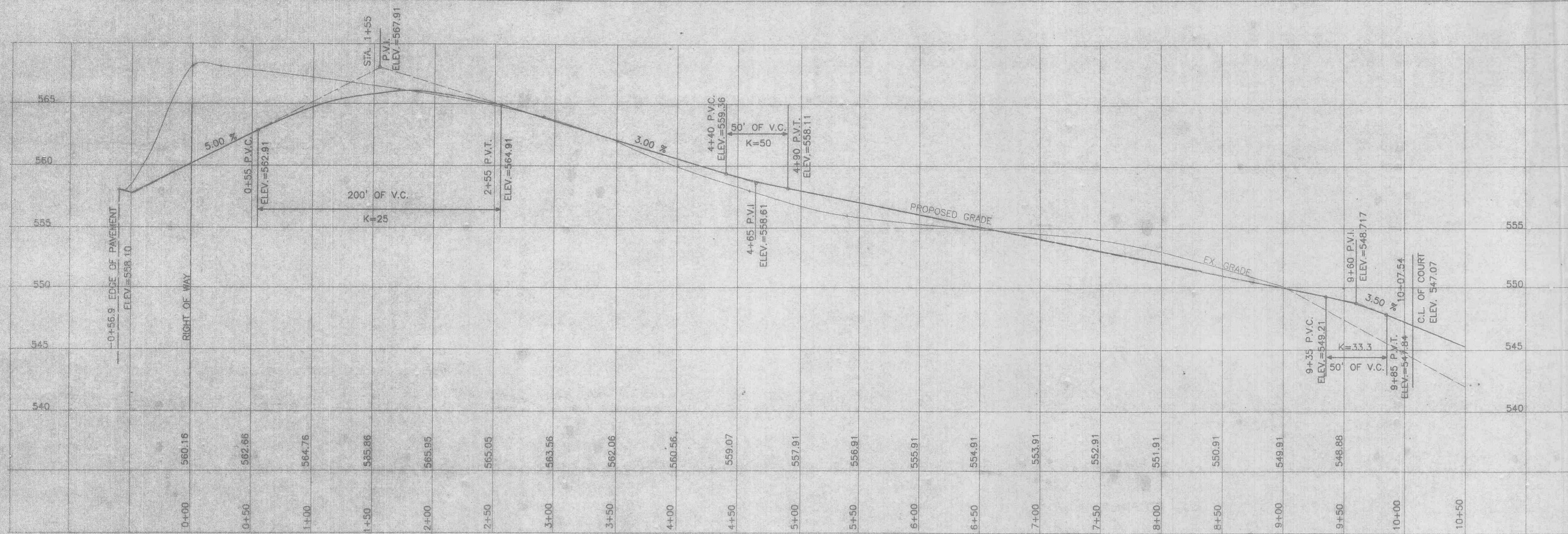
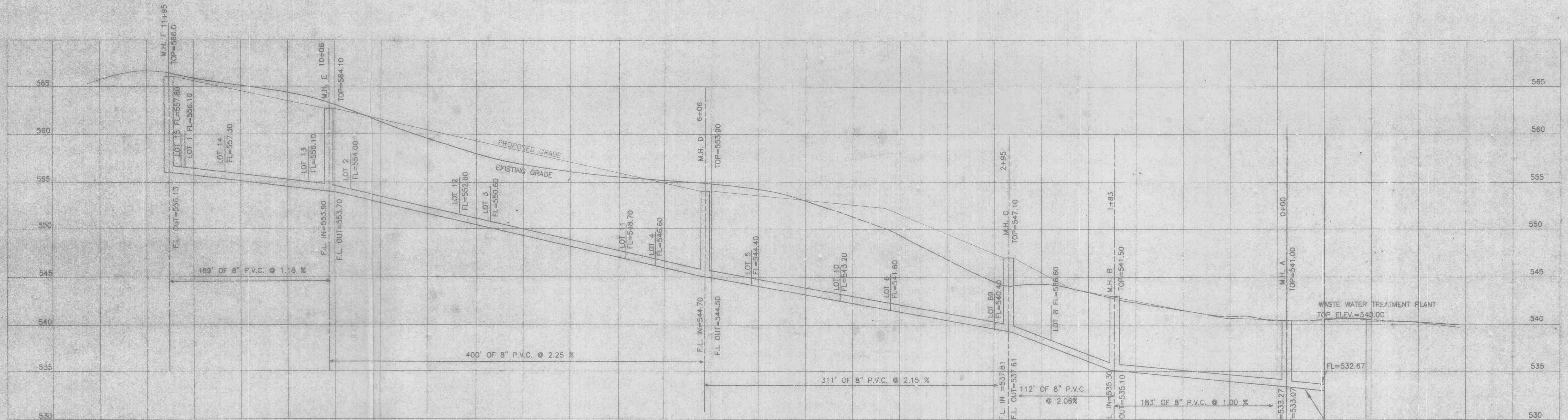


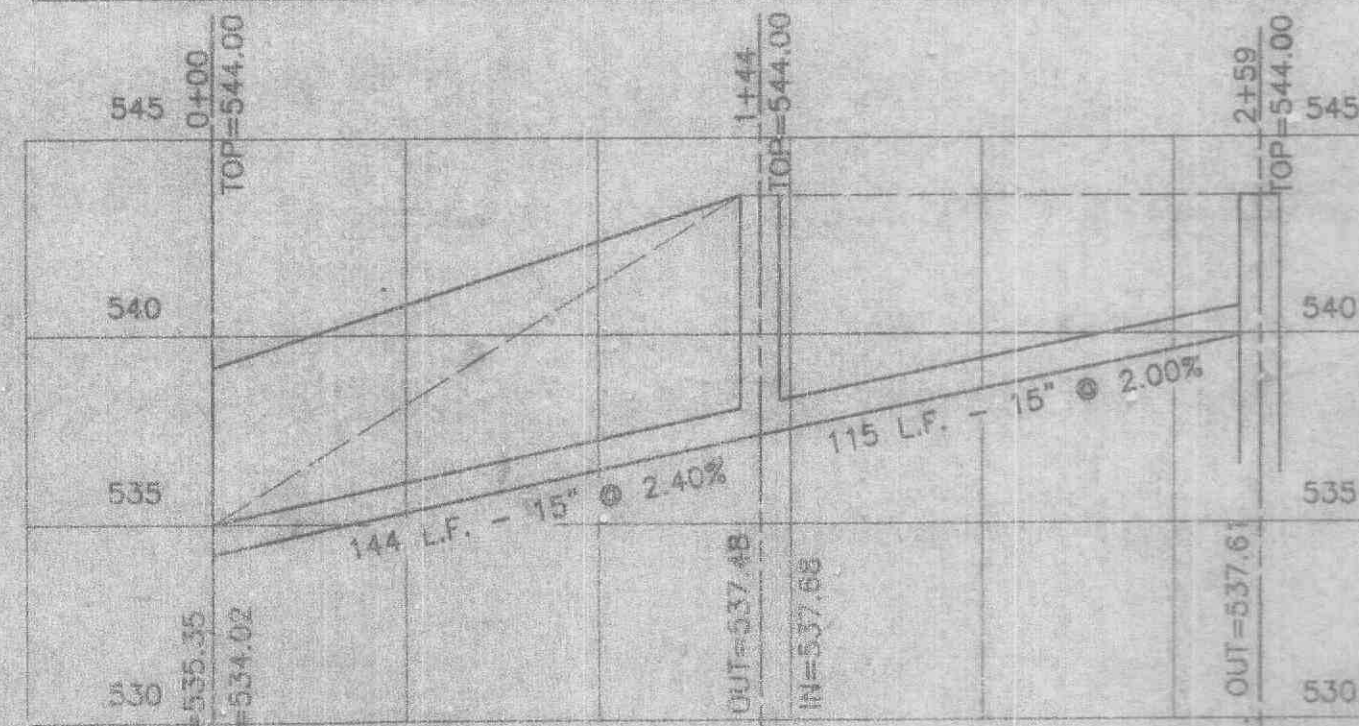
PROFILE SHEET  
 SIGMUND PLACE  
 A PART OF FRACTIONAL SECTIONS 12 AND 13,  
 TOWNSHIP 47 NORTH, RANGE 2 EAST,  
 CITY OF ST. PAUL, ST. CHARLES COUNTY, MISSOURI



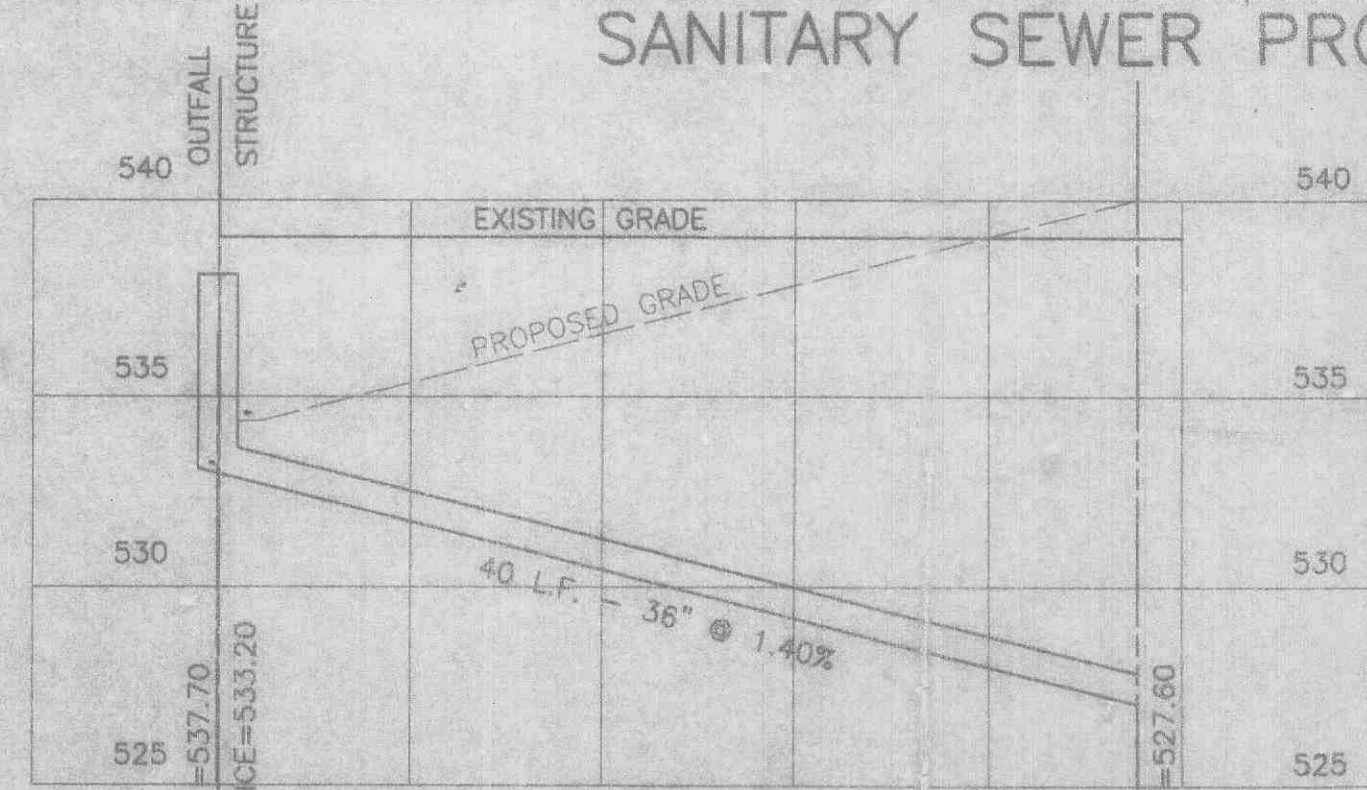
STREET PROFILE



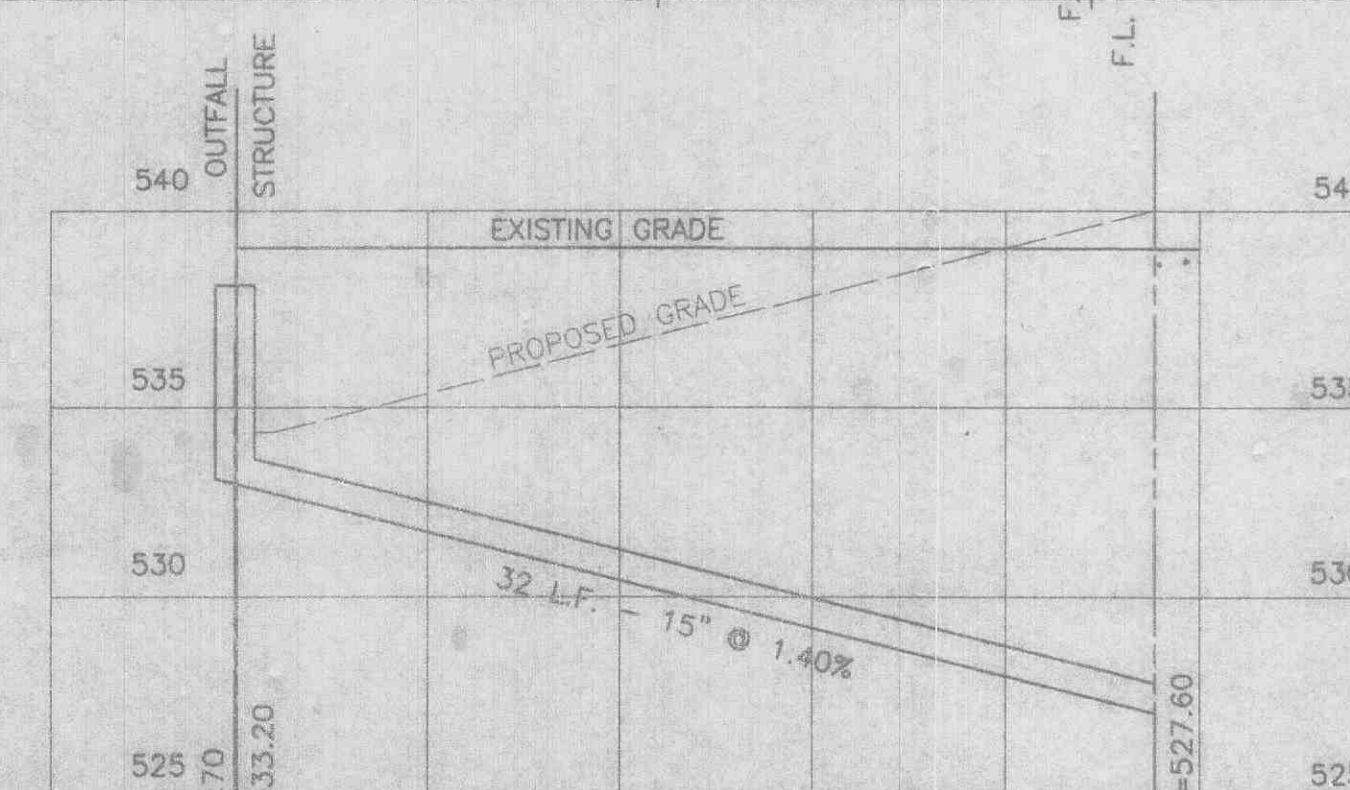
SANITARY SEWER PROFILES



STORM SEWER PROFILES



STORM SEWER PROFILES (HORIZONTAL SCALE - 1"=10')



STORM SEWER (ENTRANCE)

HORIZONTAL SCALE - 1"=50'  
 VERTICAL SCALE - 1"=5'

LANDMARK SURVEYING & ENGINEERING, INC.  
 802 E. MAIN WENTZVILLE, MO. 63385  
 PHONE NO. 636-332-9190 636-327-5853  
 FAX. NO. 636-332-9285

SEWER & STREET PROFILES

DRAWN BY: T.WHITE DATE: 3/24/06  
 CHECKED BY: DWV DATE: SHEET 3 OF 4  
 REVISIONS BY: DATE:  
 FILENAME: Sheet 2 - Grading & Flat Plan