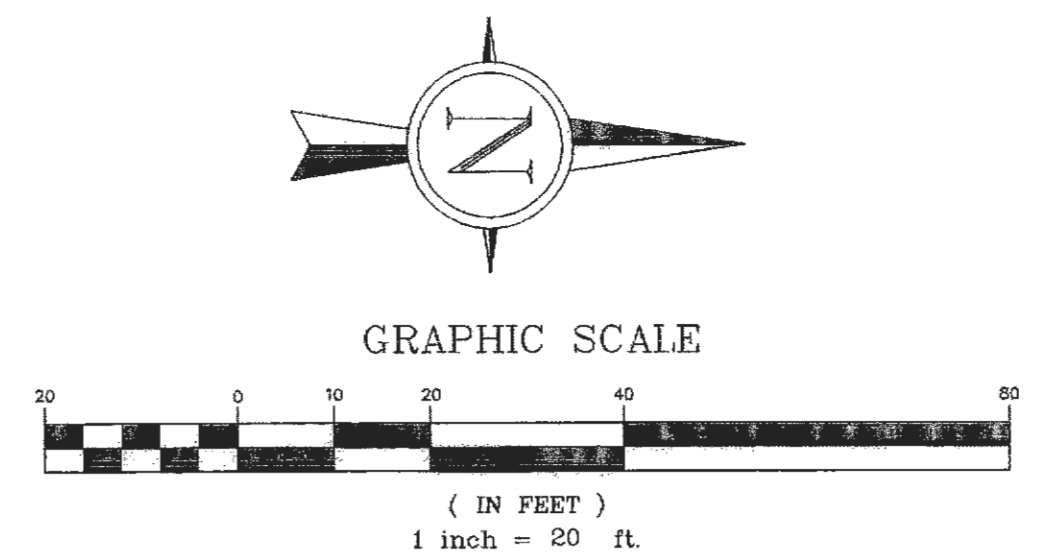


	10" P.C.C. CONCRETE OVER 4" TYPE 1 AGGREGATE OVER PREPARED BASE
	8" P.C.C. CONCRETE OVER 4" TYPE 1 AGGREGATE OVER PREPARED BASE
	7" P.C.C. CONCRETE OVER 4" TYPE 1 AGGREGATE OVER PREPARED BASE
	3" BP-1 SURFACE MIX OVER 4" AGGREGATE BASE MODOT TYPE 1 OR TYPE 5 OVER PREPARED BASE

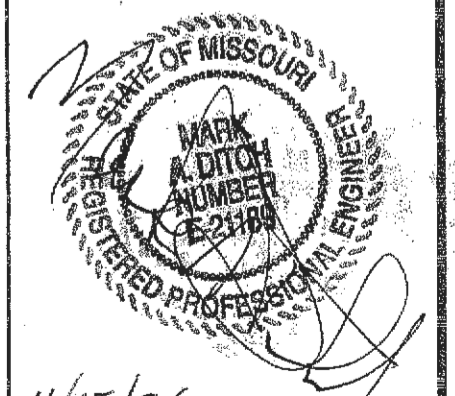
**PAVING LEGEND**



REVISIONS	

**BUESCHER DITCH & ASSOCIATES, INC.**  
 2 East Fifth Street, P.O. Box 621, Washington, Missouri 63090  
 Telephone: 1-636-239-6255  
 Fax: 1-636-239-7681  
 E-mail: www.buescherditch.com

**TRAFFIC CONTROL PLAN PHASE 2**  
**SIGNATURE BANK OF O'FALLON**  
**ST. CHARLES COUNTY, MISSOURI**

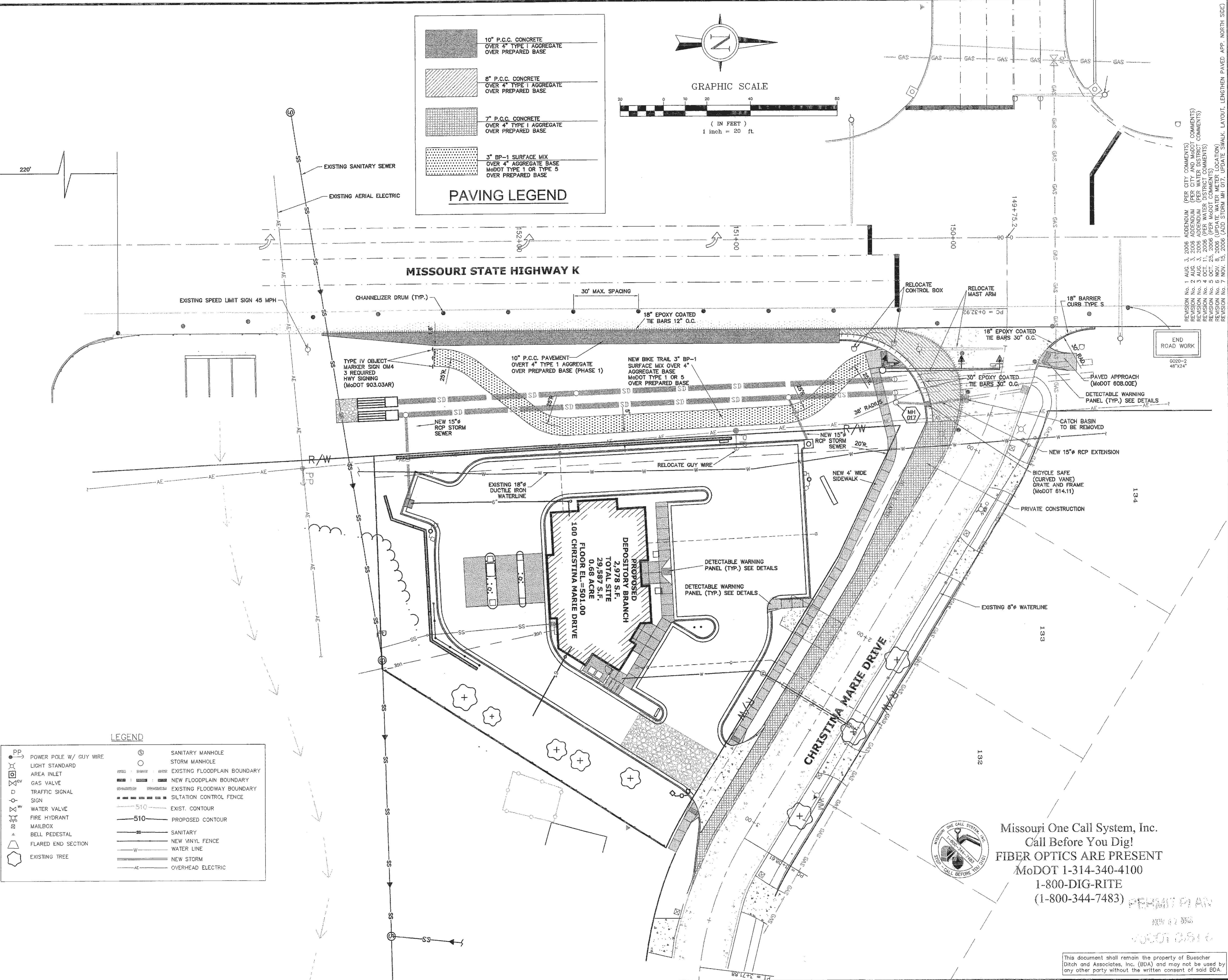


11/15/06
6-16-06
DATE
06033
PROJECT NUMBER
0000CON.DWG
FILE NAME
3 of 16
SHEET OF
DRAWN
CHECKED

REVISION No. 1 AUG. 3, 2006 ADDENDUM (PER CITY COMMENTS)  
 REVISION No. 2 AUG. 3, 2006 ADDENDUM (PER CITY AND MODOT COMMENTS)  
 REVISION No. 3 AUG. 3, 2006 ADDENDUM (PER WATER DISTRICT COMMENTS)  
 REVISION No. 4 OCT. 23, 2006 (PER MODOT COMMENTS)  
 REVISION No. 5 OCT. 23, 2006 (PER MODOT COMMENTS)  
 REVISION No. 6 NOV. 8, 2006 (UPDATE WATER METER LOCATION)  
 REVISION No. 7 NOV. 15, 2006 (ADD STORM MH 017; UPDATE SPALL; LAYOUT; LENGTHEN PAVED APP. NORTH SIDE)

**LEGEND**

	POWER POLE W/ GUY WIRE		SANITARY MANHOLE
	LIGHT STANDARD		STORM MANHOLE
	AREA INLET		EXISTING FLOODPLAIN BOUNDARY
	GAS VALVE		NEW FLOODPLAIN BOUNDARY
	TRAFFIC SIGNAL		EXISTING FLOODWAY BOUNDARY
	SIGN		SILTATION CONTROL FENCE
	WATER VALVE		EXIST. CONTOUR
	FIRE HYDRANT		PROPOSED CONTOUR
	MAILBOX		SANITARY
	BELL PEDESTAL		NEW VINYL FENCE
	FLARED END SECTION		WATER LINE
	EXISTING TREE		NEW STORM
			OVERHEAD ELECTRIC



Missouri One Call System, Inc.  
 Call Before You Dig!  
 FIBER OPTICS ARE PRESENT  
 MoDOT 1-314-340-4100  
 1-800-DIG-RITE  
 (1-800-344-7483)

This document shall remain the property of Buescher Ditch and Associates, Inc. (BDA) and may not be used by any other party without the written consent of said BDA.