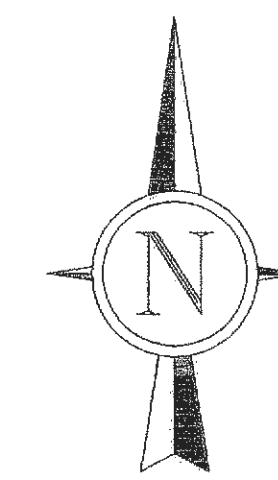


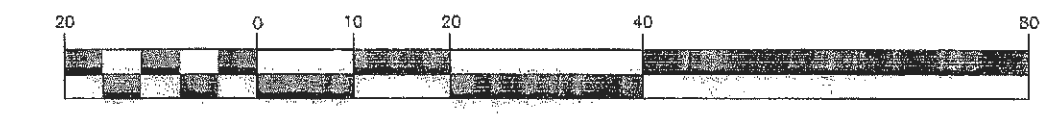
BUESCHER DITCH & ASSOCIATES, INC.

2 East Fifth Street, P.O. Box 621, Washington, Missouri 63090
Telephone: 1-636-239-7651
E-mail: www.bueschertitch.com

GRADING PLAN
SIGNATURE BANK OF O'FALLON
ST. CHARLES COUNTY, MISSOURI



GRAPHIC SCALE



LEGEND

PP	POWER POLE W/ GUY WIRE	○	SANITARY MANHOLE
□	LIGHT STANDARD	○	STORM MANHOLE
◇	AREA INLET	---	EXISTING FLOODPLAIN BOUNDARY
◇	GAS VALVE	---	NEW FLOODPLAIN BOUNDARY
◇	TRAFFIC SIGNAL	---	EXISTING FLOODWAY BOUNDARY
◇	SIGN	---	SILTATION CONTROL FENCE
◇	WATER VALVE	---	EXIST. CONTOUR
◇	FIRE HYDRANT	---	PROPOSED CONTOUR
◇	MAILBOX	---	SANITARY
◇	BELL PEDESTAL	---	NEW VINYL FENCE
◇	FLARED END SECTION	---	WATER LINE
◇	EXISTING TREE	---	NEW STORM
EX	EXISTING	---	OVERHEAD ELECTRIC
TC	TOP OF CURB	---	BASE OF WALL
TW	TOP OF WALL	---	SPOT GRADE

GRADING NOTES:

FOR DETAILED GRADING NOTES SEE SHEET 10 OF 15.

EARTHWORK ESTIMATES:

THE FOLLOWING EARTHWORK CALCULATIONS ARE ESTIMATES BASED ON EXISTING AND PROPOSED GRADES SHOWN HEREON AND ARE TO BE CONSIDERED APPROXIMATE. THESE CALCULATIONS ARE GIVEN FOR COMPARISON VALUES ONLY AND ARE NOT INTENDED FOR USE BY THE CONTRACTORS FOR PREPARING COSTS FOR THE PROJECT. ANYONE USING THESE CALCULATIONS DO SO AT THEIR OWN RISK. FOR ESTIMATING PURPOSES WE HAVE SELECTED A 15% SHRINKAGE FACTOR WHICH IS APPLIED TO THE FILL REQUIRED TO ESTIMATE THE AMOUNT OF CUT NEEDED TO GRADE THE SITE.

- ESTIMATED VOLUME OF FILL = 904 CY.
- ESTIMATED VOLUME OF FILL W/SHRINKAGE FACTOR = 1064 CY.
- ESTIMATED VOLUME OF CUT = 383 CY.
- ESTIMATED BORROW MATERIAL REQUIRED = 680 CY.

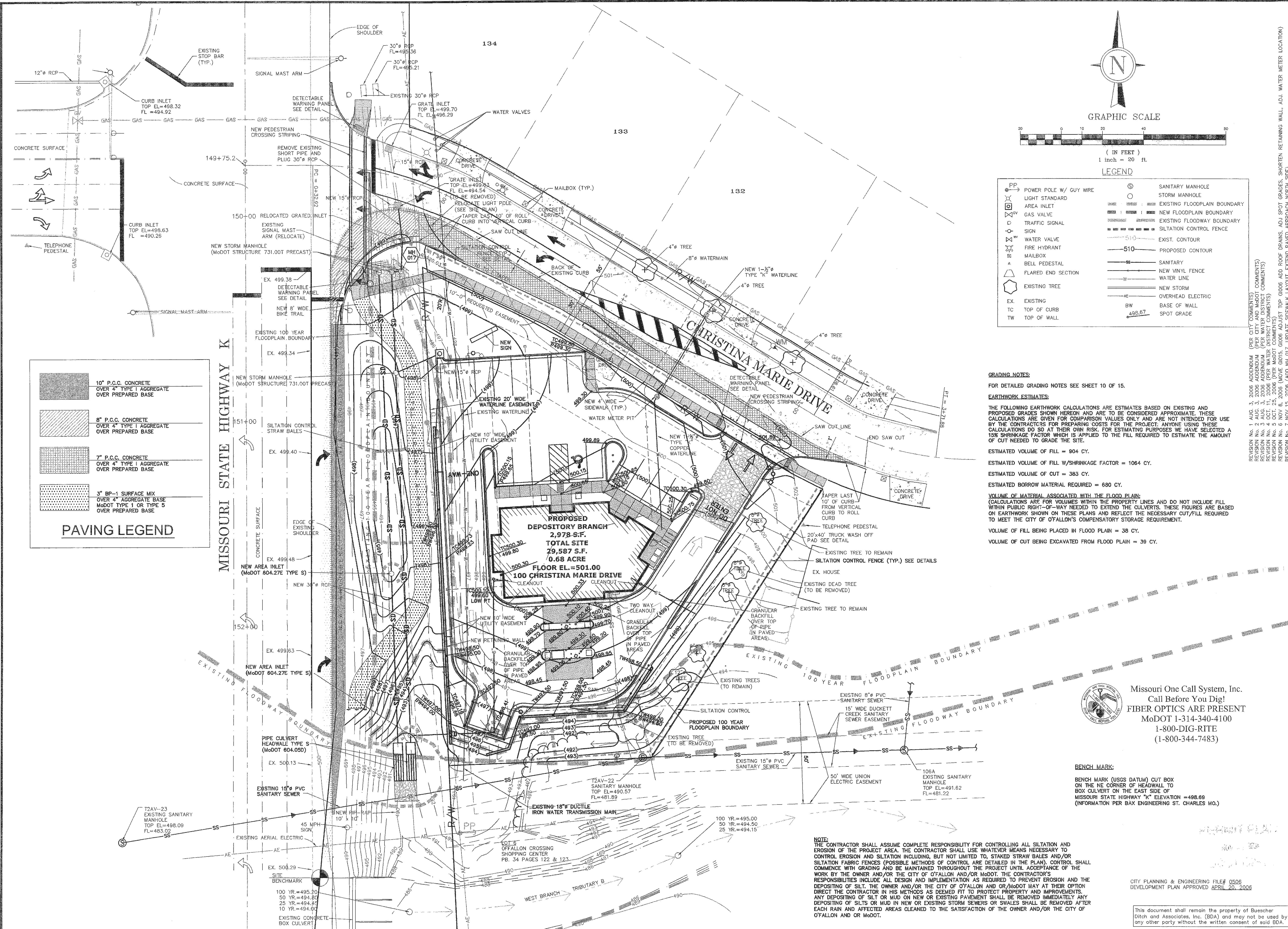
VOLUME OF MATERIAL ASSOCIATED WITH THE FLOOD PLAN:
(CALCULATIONS ARE FOR VOLUMES WITHIN THE PROPERTY LINES AND DO NOT INCLUDE FILL WITHIN PUBLIC RIGHT-OF-WAY NEEDED TO EXTEND THE CULVERTS. THESE FIGURES ARE BASED ON EARTHWORK SHOWN ON THESE PLANS AND REFLECT THE NECESSARY CUT/FILL REQUIRED TO MEET THE CITY OF O'FALLON'S COMPENSATORY STORAGE REQUIREMENT.)

- VOLUME OF FILL BEING PLACED IN FLOOD PLAN = 38 CY.
- VOLUME OF CUT BEING EXCAVATED FROM FLOOD PLAN = 39 CY.

REVISION No. 1 AUG. 3, 2006 ADDENDUM (PER CITY AND MODOT COMMENTS)
 REVISION No. 2 AUG. 3, 2006 ADDENDUM (PER CITY AND MODOT COMMENTS)
 REVISION No. 3 AUG. 3, 2006 ADDENDUM (PER WATER DISTRICT COMMENTS)
 REVISION No. 4 OCT. 11, 2006 (PER WATER DISTRICT COMMENTS)
 REVISION No. 5 NOV. 8, 2006 (LADCE CHRS. G006 ADJUST TOP G006 ADD ROOF DRAINS, ADJ SPOT GRADES, SHORTEN RETAINING WALL, ADJ. WATER METER LOCATION)
 REVISION No. 6 NOV. 8, 2006 (LADCE CHRS. G006 ADJUST TOP G006 ADD ROOF DRAINS, ADJ SPOT GRADES, SHORTEN RETAINING WALL, ADJ. WATER METER LOCATION)
 REVISION No. 7 NOV. 15, 2006 (ADD MH 017, UPDATE SIDEWALK LAYOUT, EXTEND PAVED APPROACH NORTH SIDE)

PAVING LEGEND

	10" P.C.C. CONCRETE OVER 4" TYPE I AGGREGATE OVER PREPARED BASE
	8" P.C.C. CONCRETE OVER 4" TYPE I AGGREGATE OVER PREPARED BASE
	7" P.C.C. CONCRETE OVER 4" TYPE I AGGREGATE OVER PREPARED BASE
	5" BP-1 SURFACE MIX OVER 4" AGGREGATE BASE MODOT TYPE 1 OR TYPE 5 OVER PREPARED BASE



NOTE:
THE CONTRACTOR SHALL ASSUME COMPLETE RESPONSIBILITY FOR CONTROLLING ALL SILTATION AND EROSION OF THE PROJECT AREA. THE CONTRACTOR SHALL USE WHATEVER MEANS NECESSARY TO CONTROL EROSION AND SILTATION INCLUDING, BUT NOT LIMITED TO, STAKED STRAW BALES AND/OR SILTATION FABRIC FENCES (POSSIBLE METHODS OF CONTROL ARE DETAILED IN THE PLAN). CONTROL SHALL COMMENCE WITH GRADING AND BE MAINTAINED THROUGHOUT THE PROJECT UNTIL ACCEPTANCE OF THE WORK BY THE OWNER AND/OR THE CITY OF O'FALLON AND/OR MODOT. THE CONTRACTOR'S RESPONSIBILITIES INCLUDE ALL DESIGN AND IMPLEMENTATION AS REQUIRED TO PREVENT EROSION AND THE DEPOSITING OF SILT. THE OWNER AND/OR THE CITY OF O'FALLON AND/OR MODOT MAY AT THEIR OPTION DIRECT THE CONTRACTOR IN HIS METHODS AS DEEMED FIT TO PROTECT PROPERTY AND IMPROVEMENTS. ANY DEPOSITING OF SILT OR MUD ON NEW OR EXISTING PAVEMENT SHALL BE REMOVED IMMEDIATELY ANY DEPOSITING OF SILTS OR MUD IN NEW OR EXISTING STORM SEWERS OR SWALES SHALL BE REMOVED AFTER EACH RAIN AND AFFECTED AREAS CLEANED TO THE SATISFACTION OF THE OWNER AND/OR THE CITY OF O'FALLON AND OR MODOT.

BENCH MARK:
BENCH MARK (USGS DATUM) CUT BOX ON THE NE CORNER OF HEADWALL TO BOX CULVERT ON THE EAST SIDE OF MISSOURI STATE HIGHWAY "K" ELEVATION = 498.69 (INFORMATION PER BAX ENGINEERING ST. CHARLES MO.)

Missouri One Call System, Inc.
Call Before You Dig!
FIBER OPTICS ARE PRESENT
MoDOT 1-314-340-4100
1-800-DIG-RITE
(1-800-344-7483)



11/15/06

6-19-06	DATE
06033	PROJECT NUMBER
SITE DEV. PLANS.DWG	SHEET # OF
6 of 16	SHEET # OF
GMM	DRAWN
CHECKED	CHECKED

This document shall remain the property of Buescher Ditch and Associates, Inc. (BDA) and may not be used by any other party without the written consent of said BDA.