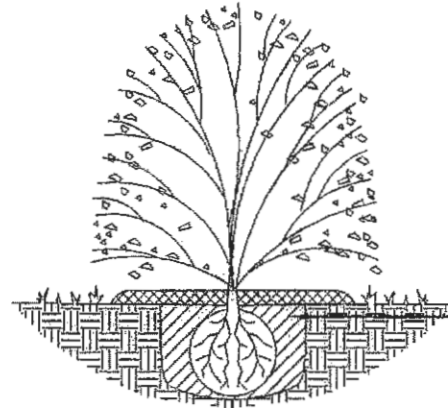


ACCESSIBLE SYMBOL
NO SCALE

NOTE: CONTRACTOR TO USE THIS DETAIL OR A DETAIL THAT IS APPLICABLE TO LOCAL CODE.



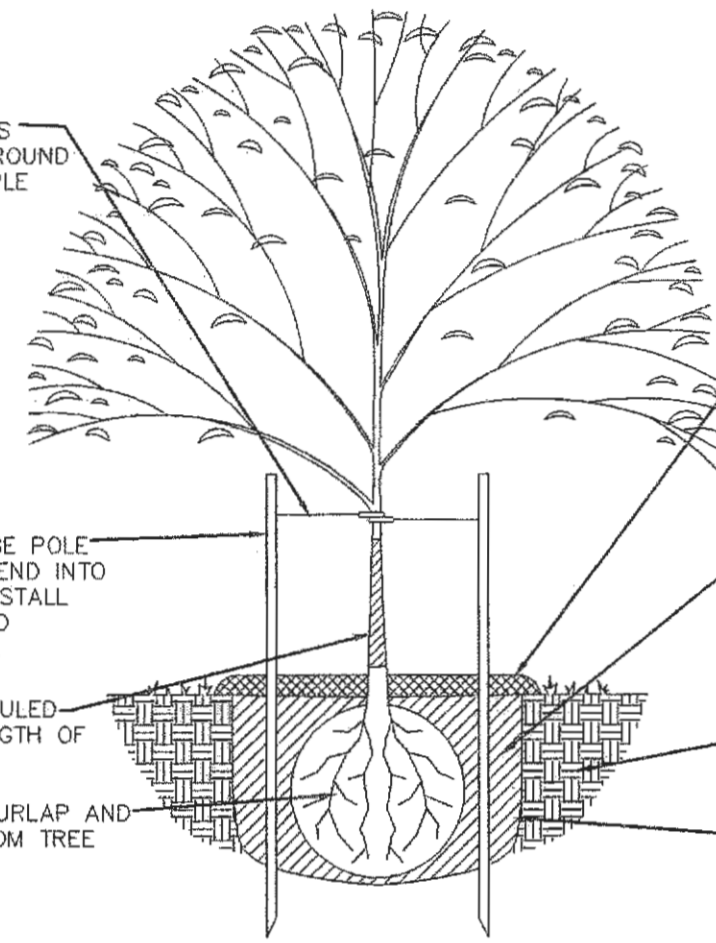
MAINTAIN ALL BURLAP AND TWINE AWAY FROM SHRUB TRUNK.

3" DEEP WOOD CHIP MULCH. FILL WATER BASIN COMPLETELY WITH WATER PRIOR TO INSTALLATION OF MULCH.

FIRMLY PLACE BACKFILL AROUND ROOTBALL. INSTALL FERTILIZER AFTER 1/2 OF BACKFILLING IS COMPLETE.

DIG PLANT PIT 6" WIDER THAN ROOTBALL. SCARIFY SIDES AND BOTTOM OF HOLE.

WIRE/ HOSE TREE TIES FROM EACH STAKE AROUND TREE. SECURELY STAPLE TREE TIE TO STAKE.

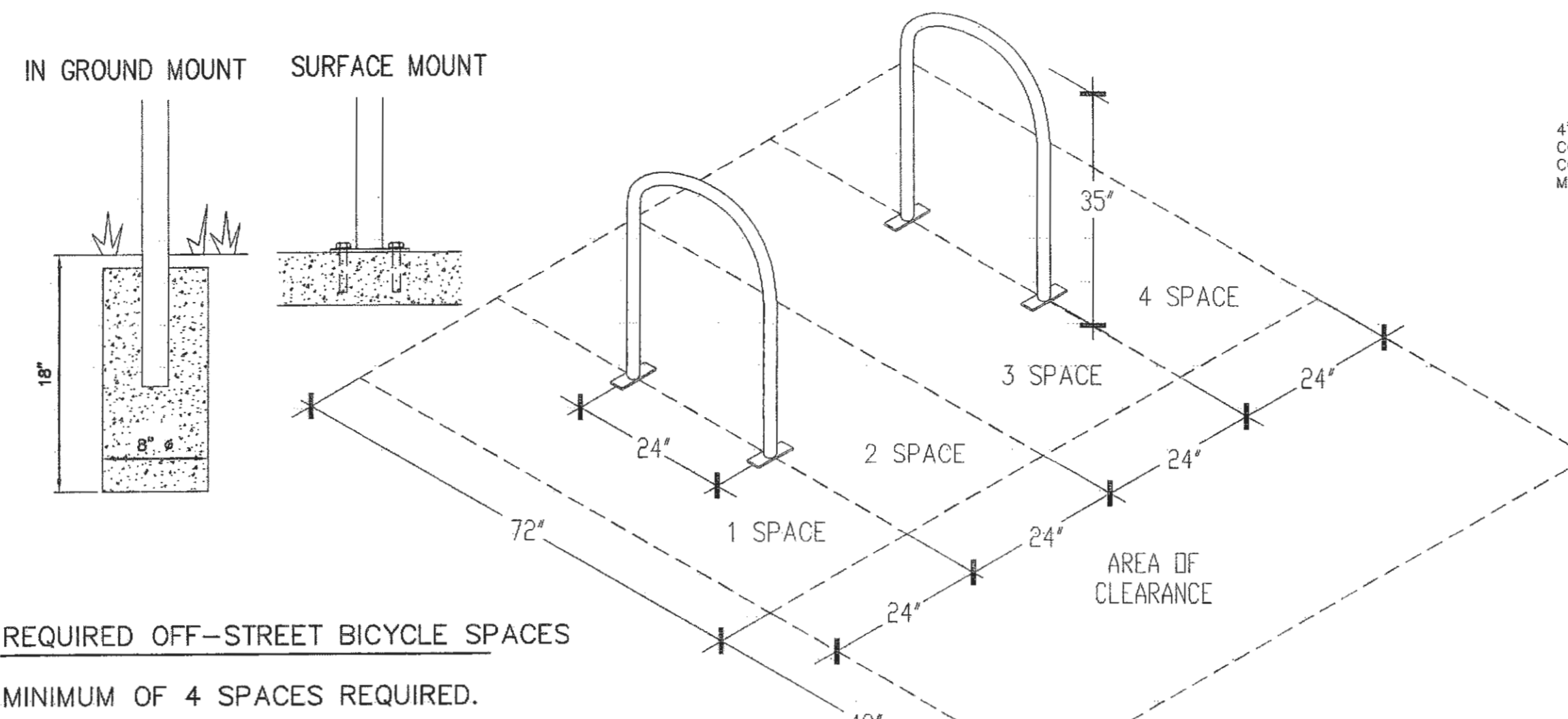


3" DEEP WOOD CHIP MULCH. FILL WATER BASIN COMPLETELY WITH WATER PRIOR TO INSTALLATION OF MULCH.

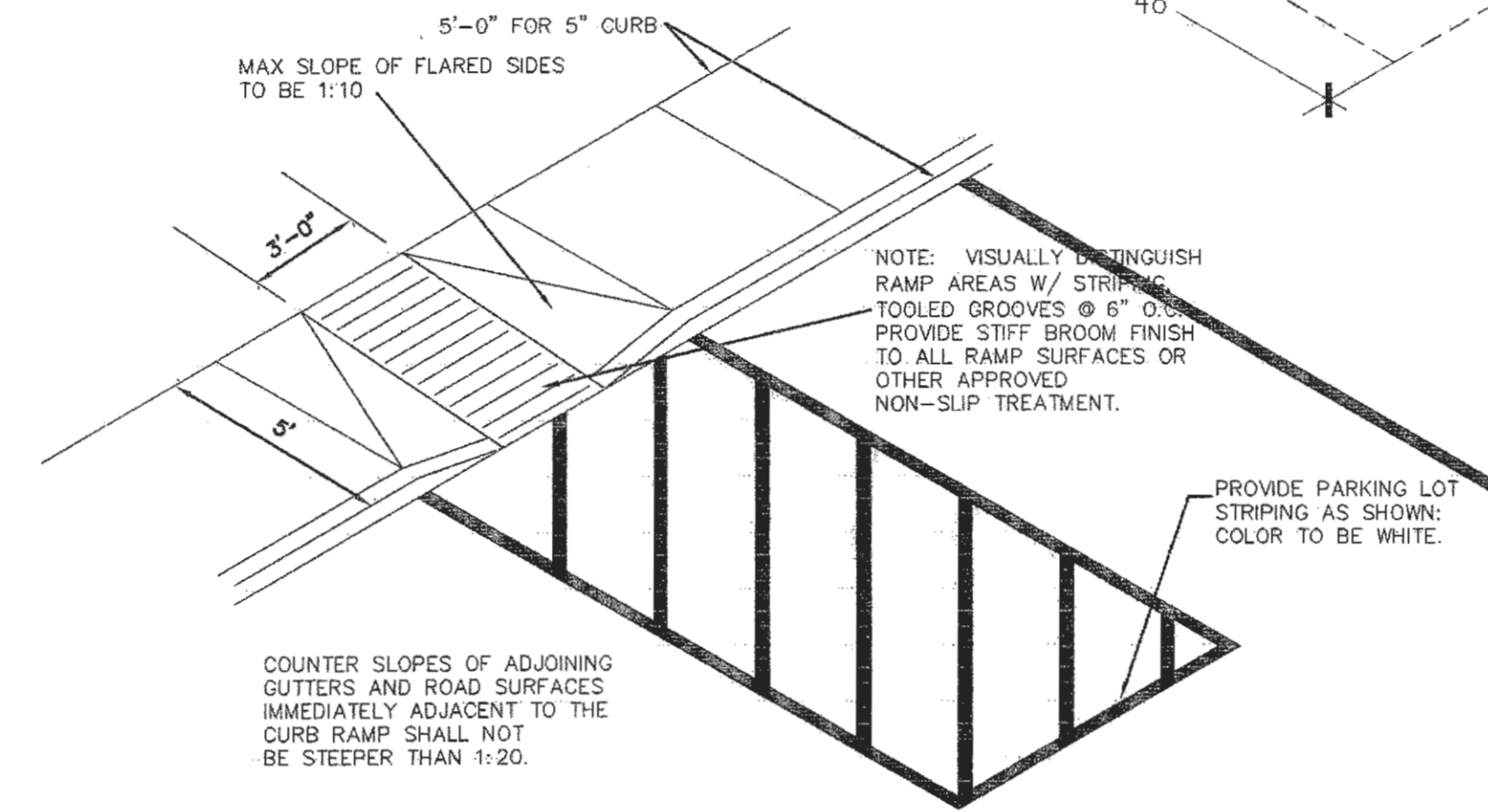
FIRMLY PLACE BACKFILL AROUND ROOTBALL. INSTALL FERTILIZER AFTER 1/2 OF BACKFILLING IS COMPLETE.

EXISTING SOIL.

DIG PLANT PIT 12" WIDER THAN ROOTBALL. SCARIFY SIDES AND BOTTOM OF HOLE.



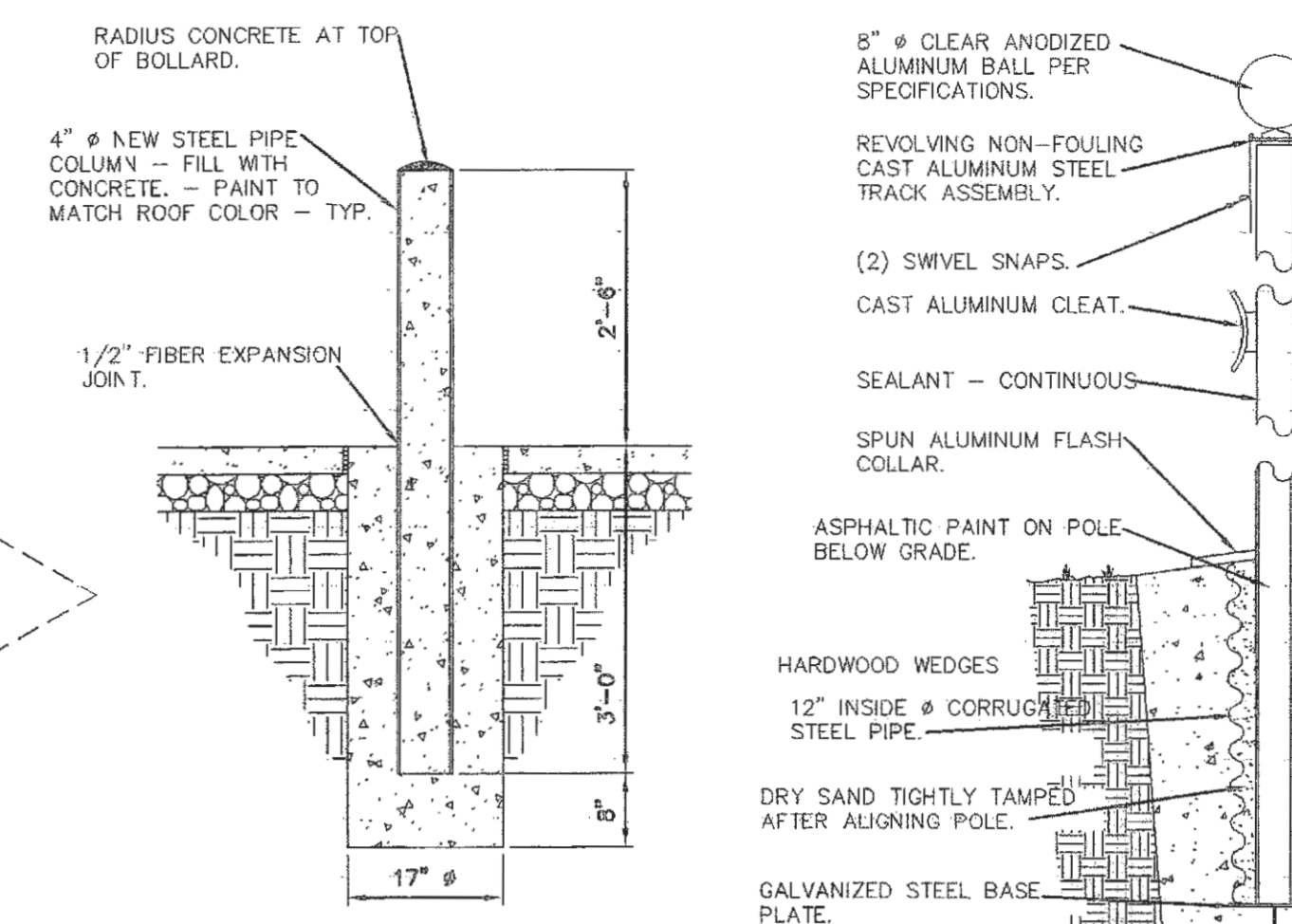
REQUIRED OFF-STREET BICYCLE SPACES
MINIMUM OF 4 SPACES REQUIRED.



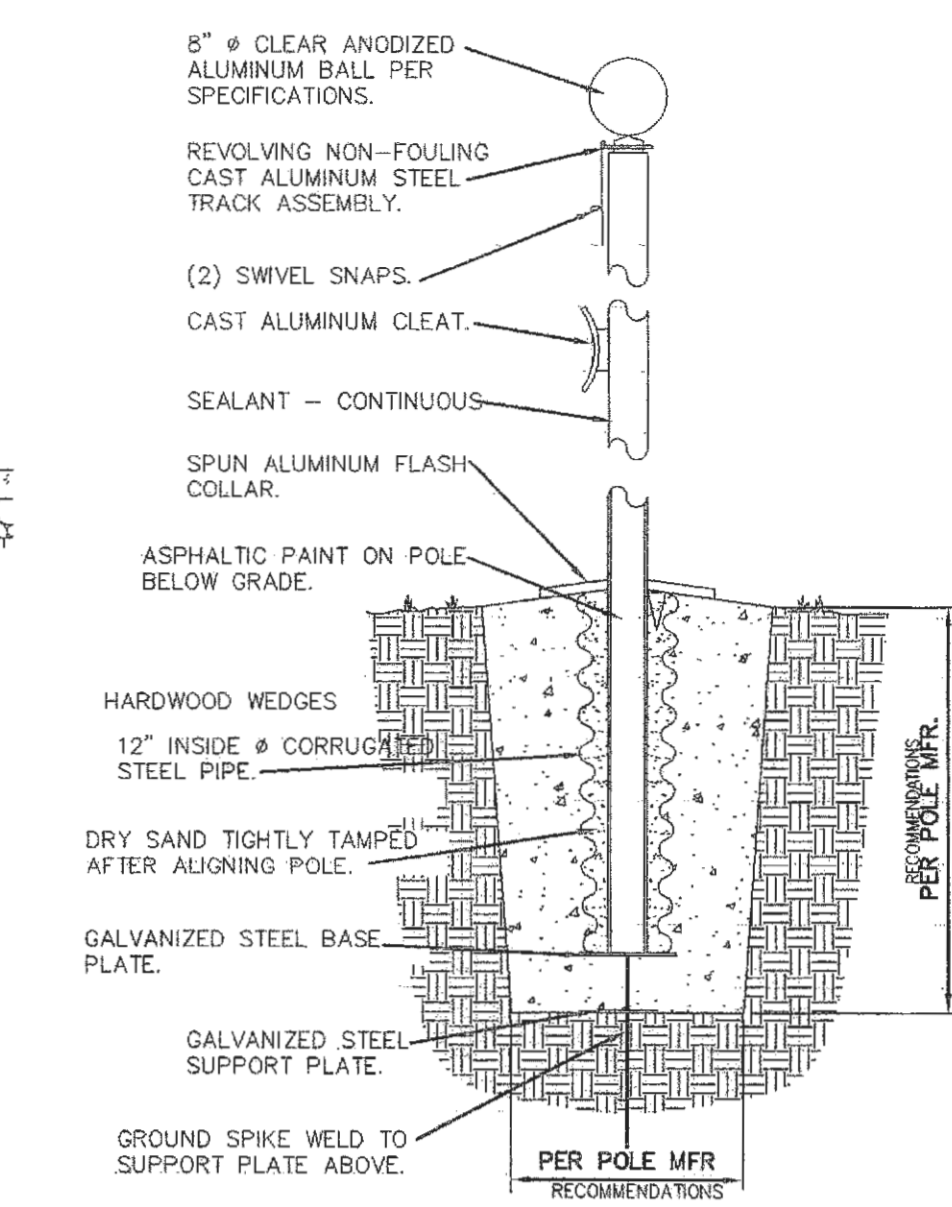
NOTE: VISUALLY DISTINGUISH RAMP AREAS W/ STRIPING TOOLED GROOVES @ 6" O.C. PROVIDE STIFF BROOM FINISH TO ALL RAMP SURFACES OR OTHER APPROVED NON-SLIP TREATMENT.

PROVIDE PARKING LOT STRIPING AS SHOWN. COLOR TO BE WHITE.

COUNTER SLOPES OF ADJOINING GUTTERS AND ROAD SURFACES IMMEDIATELY ADJACENT TO THE CURB RAMP SHALL NOT BE STEEPER THAN 1:20.

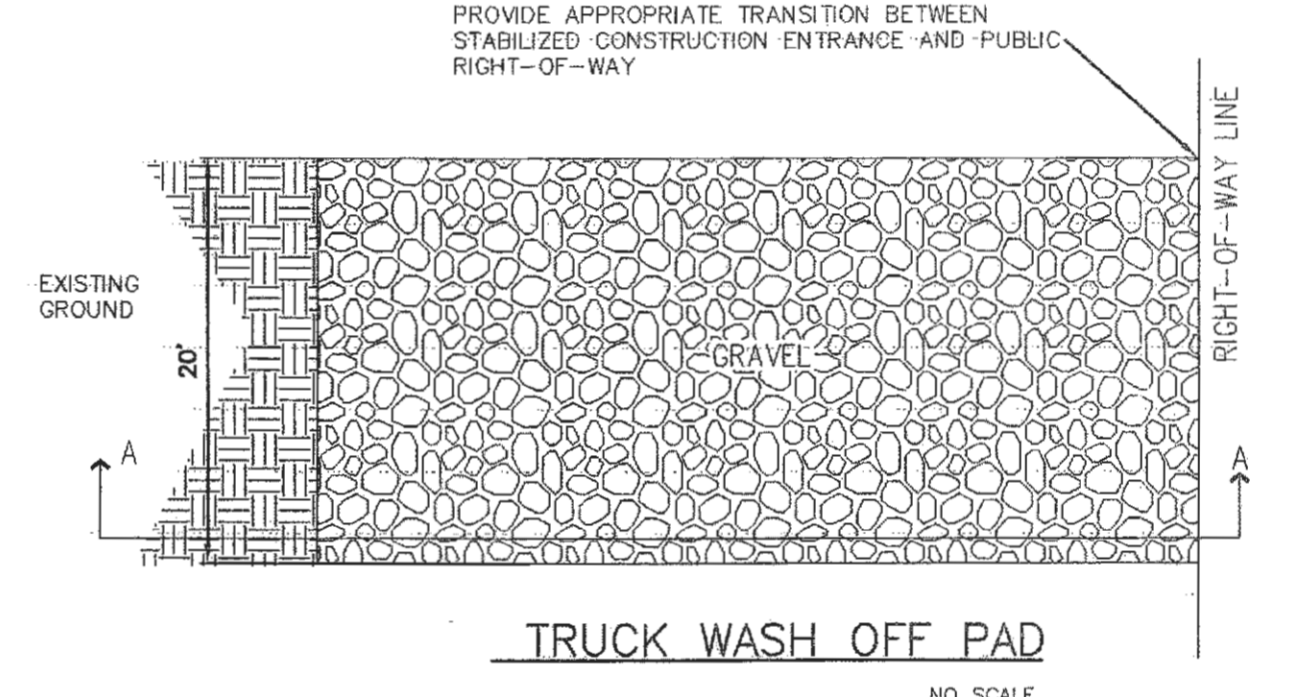


GUARD POST DETAIL
NO SCALE

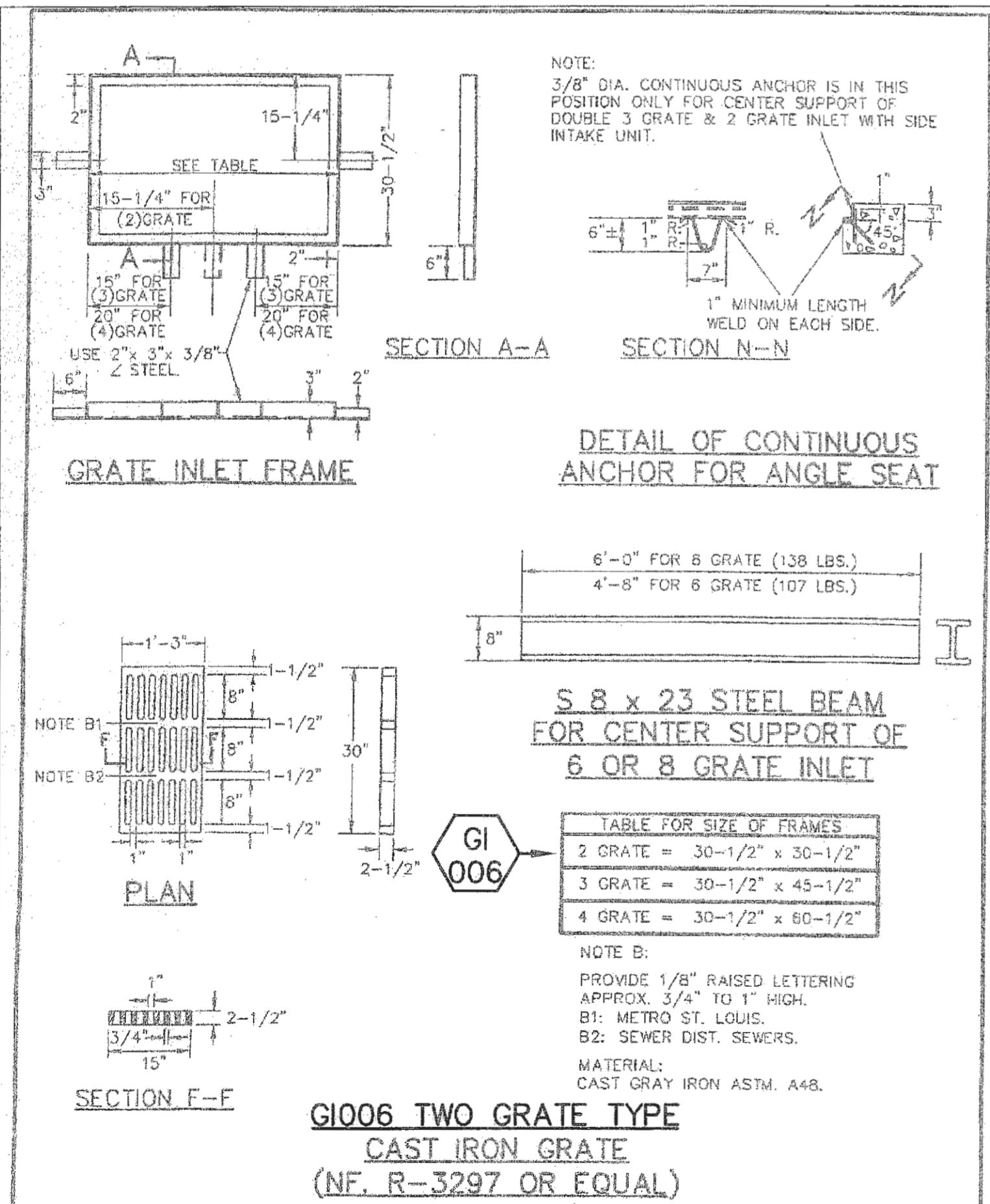


FLAG POLE
NO SCALE

- STABILIZED CONST. ENTRANCE NOTES:
1. CONSTRUCT STABILIZED CONSTRUCTION ENTRANCE AT ANY LOCATION WHERE ENTRANCE TO THE CONSTRUCTION SITE IS PERMITTED.
 2. THE STONE SIZE SHALL CONSIST OF COARSE AGGREGATE IN ACCORDANCE WITH AASHTO M43 GRADATION 357. THE MATERIAL PLACED SHALL NOT BE LESS THAN THE WIDTH OF THE INGRESS OR EGRESS.
 3. MAINTAIN THE ENTRANCE IN A CONDITION WHICH WILL PREVENT TRACKING OR FLOWING OF SEDIMENT ONTO PUBLIC RIGHTS-OF-WAY. THIS MAY REQUIRE PERIODIC TOP DRESSING WITH ADDITIONAL STONE AS CONDITIONS DEMAND AND REPAIR AND/OR CLEANOUT OF ANY MEASURES USED TO TRAP SEDIMENT. REMOVE ALL SEDIMENT SPILLED, DROPPED, WASHED OR TRACKED ONTO PUBLIC RIGHTS-OF-WAY.
 4. WHEN NECESSARY, CLEAN WHEELS TO REMOVE SEDIMENT PRIOR TO ENTRANCE INTO PUBLIC RIGHT-OF-WAY. WHEN WASHING IS REQUIRED, IT SHALL BE DONE ON AN AREA STABILIZED WITH CRUSHED STONE WHICH DRAINS INTO AN APPROVED SEDIMENT TRAP OR SEDIMENT BASIN. PREVENT SEDIMENT FROM ENTERING ANY STORM DRAIN, DITCH, OR WATER COURSE THROUGH USE OF SAND BAGS, GRAVEL, BOARDS OR OTHER APPROVED METHODS.



TRUCK WASH OFF PAD
NO SCALE



DETAIL OF CONTINUOUS ANCHOR FOR ANGLE SEAT

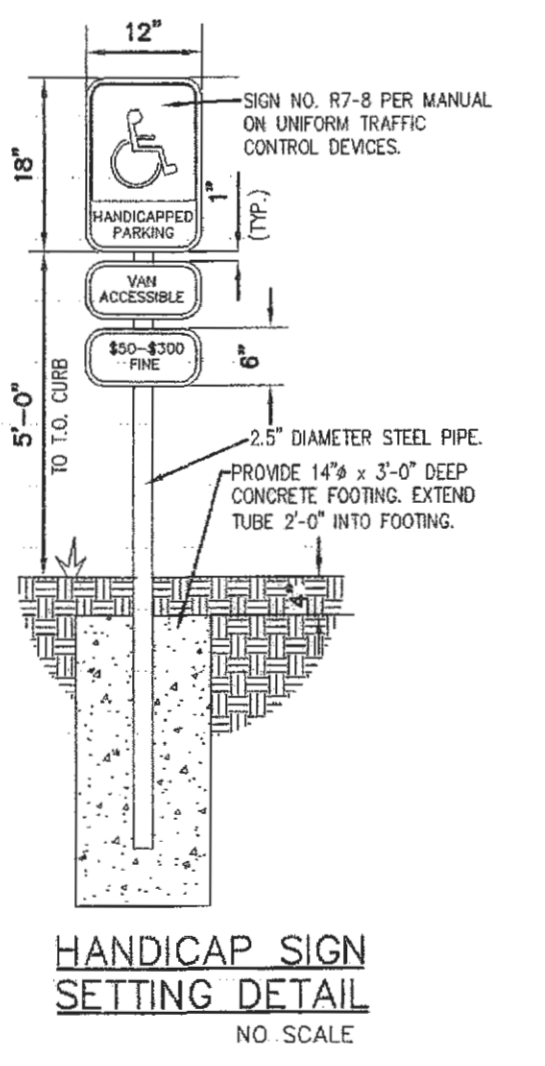
S 8 x 23 STEEL BEAM FOR CENTER SUPPORT OF 6 OR 8 GRATE INLET

TABLE FOR SIZE OF FRAMES
2 GRATE = 30-1/2" x 30-1/2"
3 GRATE = 30-1/2" x 45-1/2"
4 GRATE = 30-1/2" x 60-1/2"

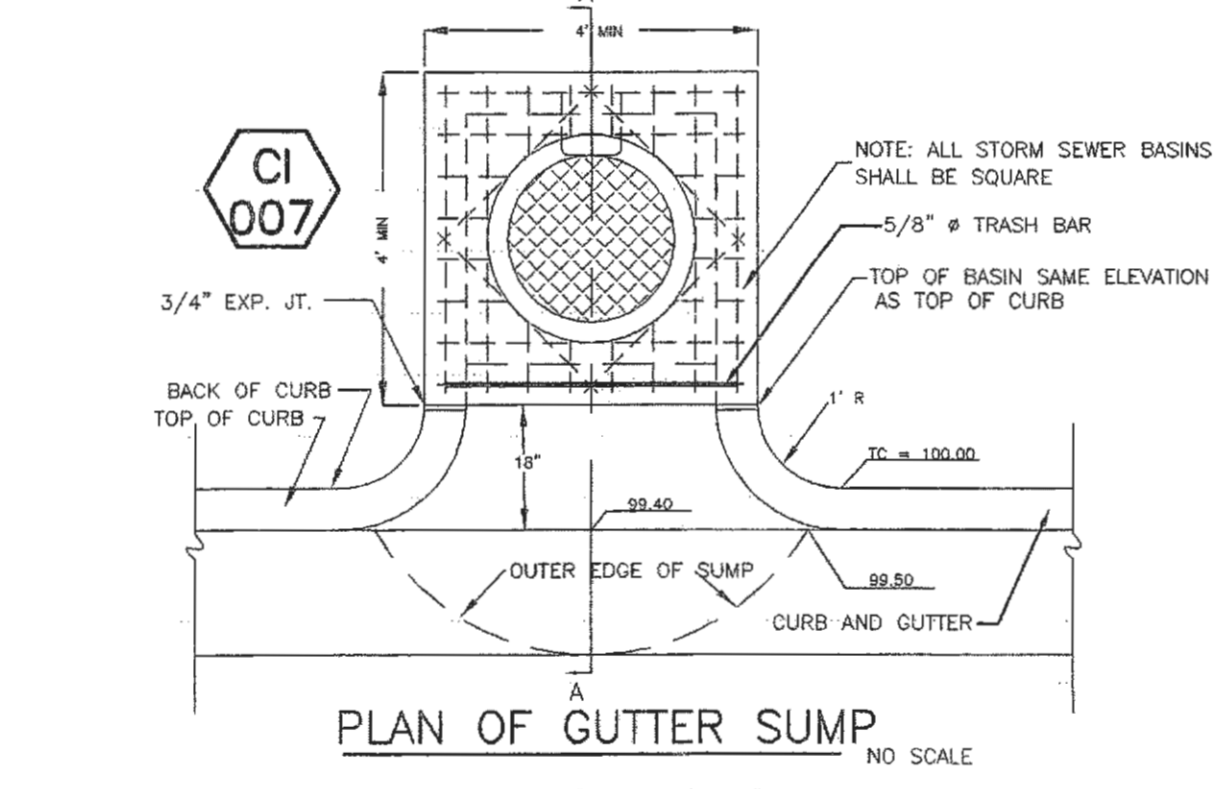
NOTE B:
PROVIDE 1/8" RAISED LETTERING APPROX. 3/4" TO 1" HIGH.
B1: METRO ST. LOUIS.
B2: SEWER DIST. SEWERS.
MATERIAL: CAST GRAY IRON ASTM. A48.

G1006 TWO GRATE TYPE CAST IRON GRATE (NF. R-3297 OR EQUAL)

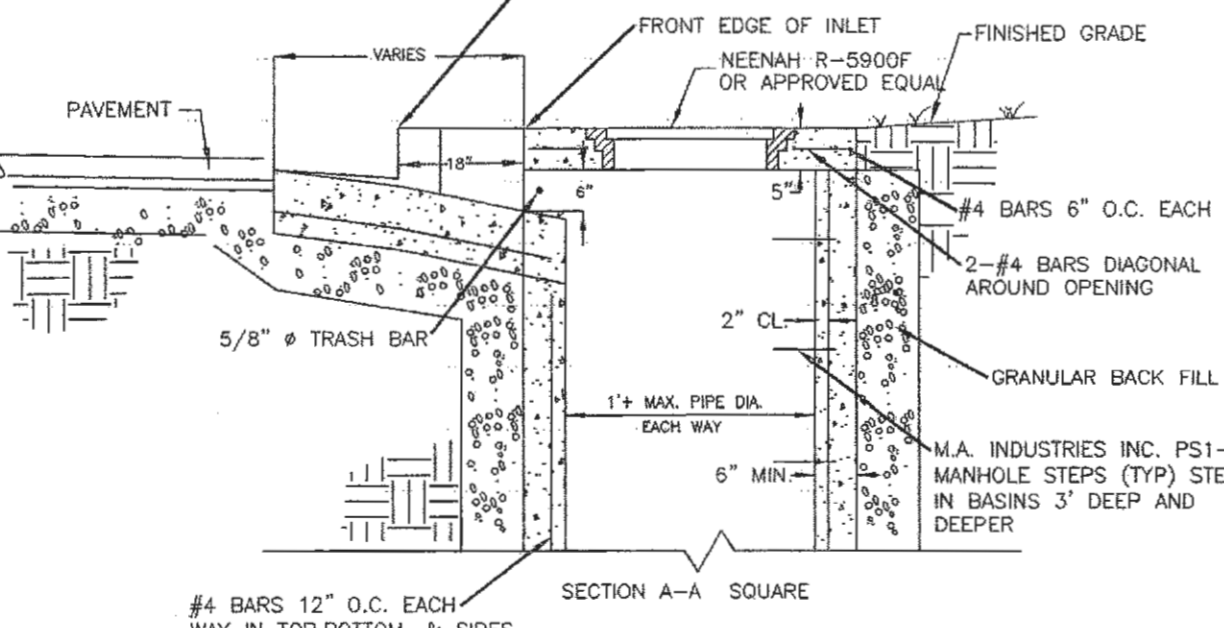
DETAILS OF INLET FRAME AND GRATES	METROPOLITAN ST. LOUIS SEWER DISTRICT Standard Details of Sewer Construction
DR. RGW/SAM Ch. J.C.K.	2000 SHEET 48



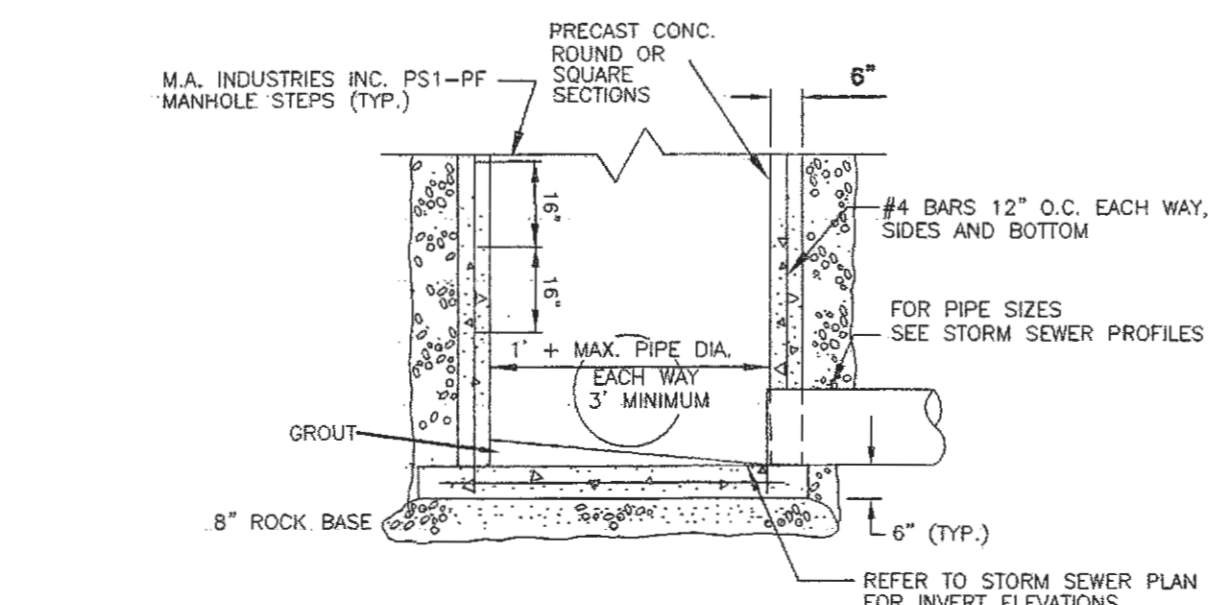
HANDICAP SIGN SETTING DETAIL
NO SCALE



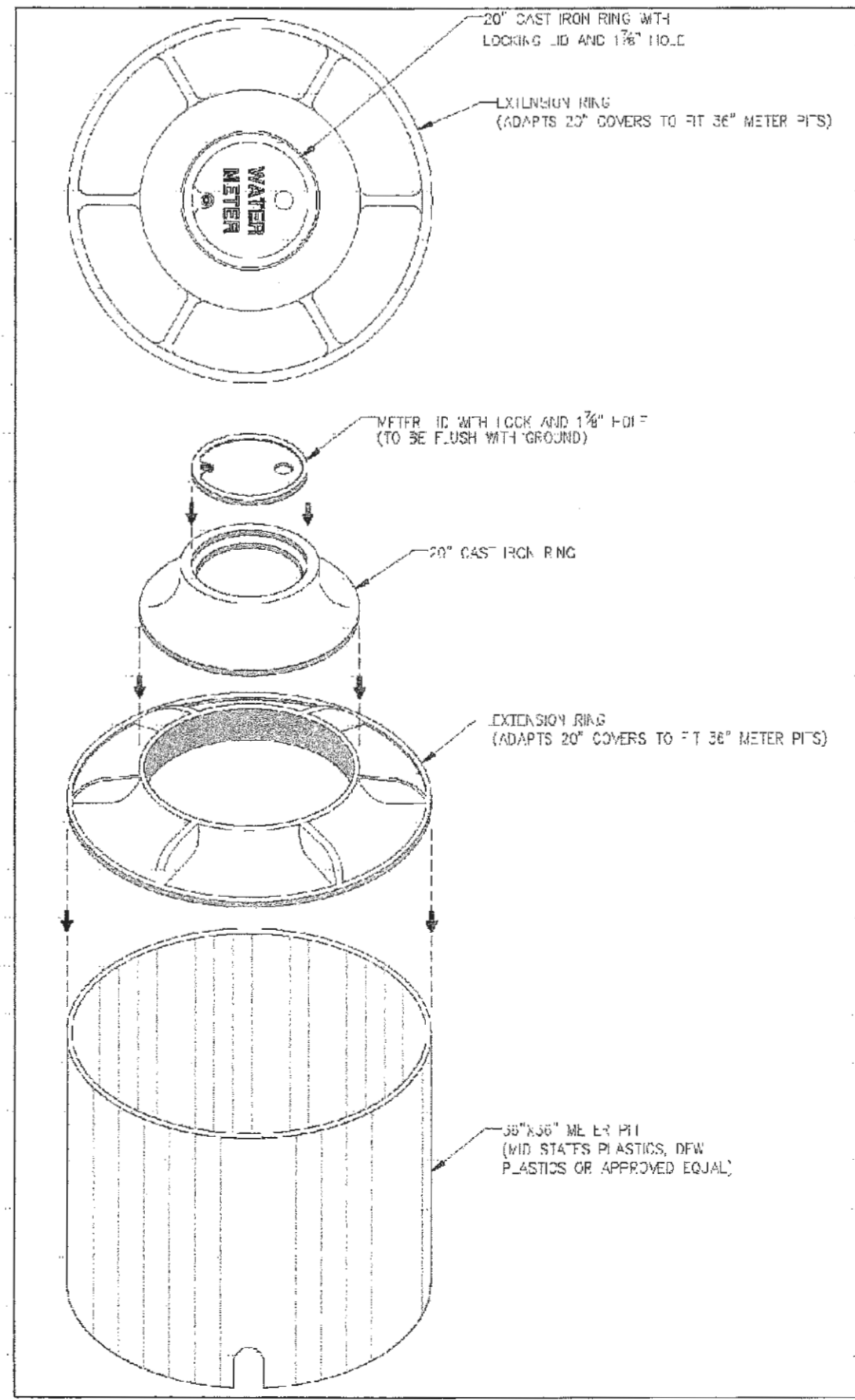
PLAN OF GUTTER SUMP
NO SCALE



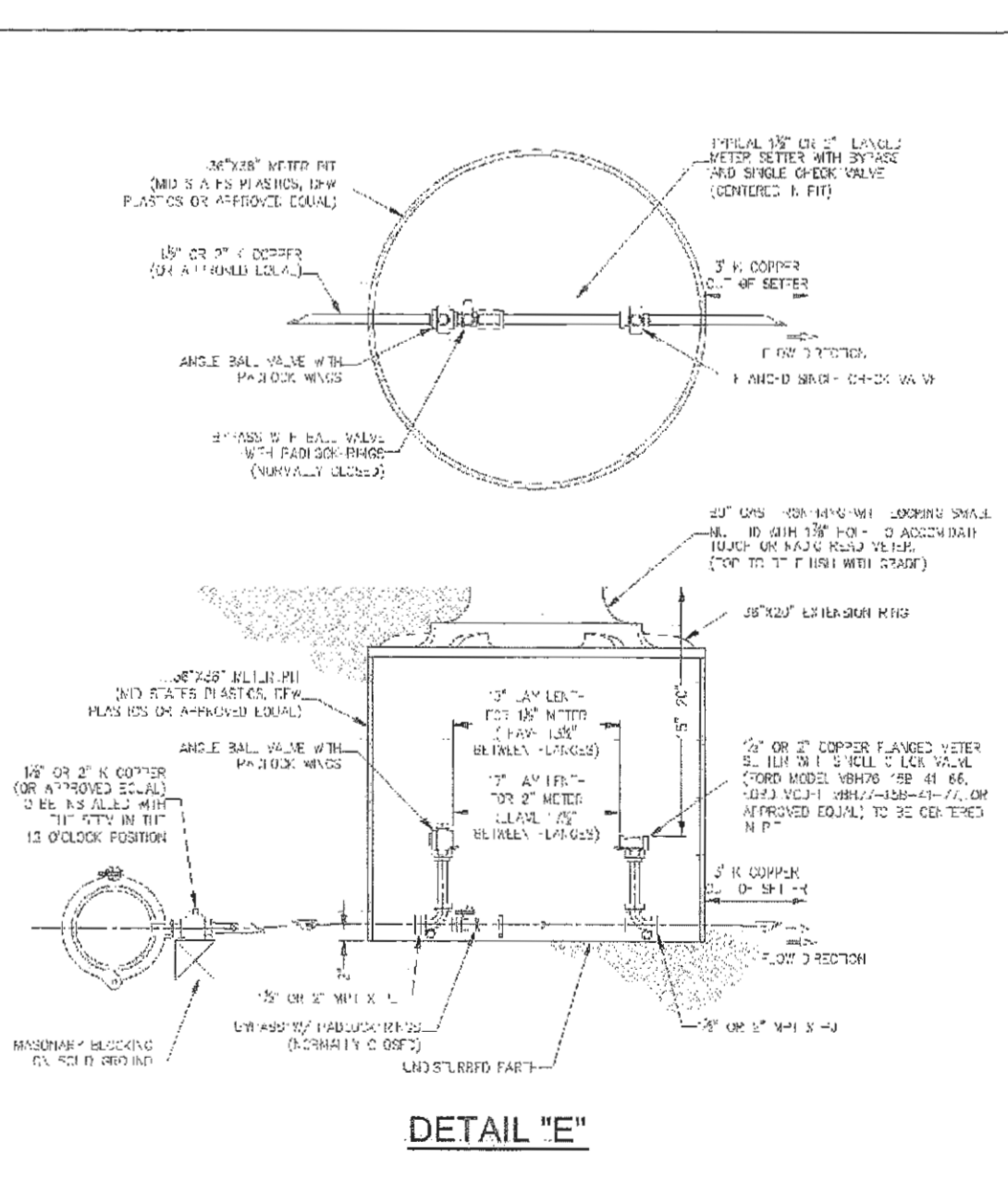
CURB INLET CATCH BASIN DETAIL
NO SCALE



TYPICAL CATCH BASIN BOTTOM DETAIL
NO SCALE



TYP. 1-1/2" OR 2" WATER METER SERVICE PIT
SAINT CHARLES COUNTY



DETAIL "E"

TYP. 1-1/2" OR 2" WATER SERVICE PUBLIC WATER SUPPLY DISTRICT No.2 SAINT CHARLES COUNTY

CITY PLANNING & ENGINEERING FILE# 0806 DEVELOPMENT PLAN APPROVED APRIL 20, 2006

This document shall remain the property of Buescher Ditch and Associates, Inc. (BDA) and may not be used by any other party without the written consent of said BDA.

REVISIONS

BUESCHER DITCH & ASSOCIATES, INC.
2 East Fifth Street, P.O. Box 621, Washington, Missouri 63090
Telephone: 1-636-239-7681
E-mail: www.buescherditch.com

DETAILS SIGNATURE BANK OF O'FALLON ST. CHARLES COUNTY, MISSOURI



11/9/06	6-19-06
DATE	DATE
06033	PROJECT NUMBER
FILE NAME	SITE DEV. PLANS.DWG
12 of 16	SHEET OF
GMM	DRAWN
CHECKED	CHECKED