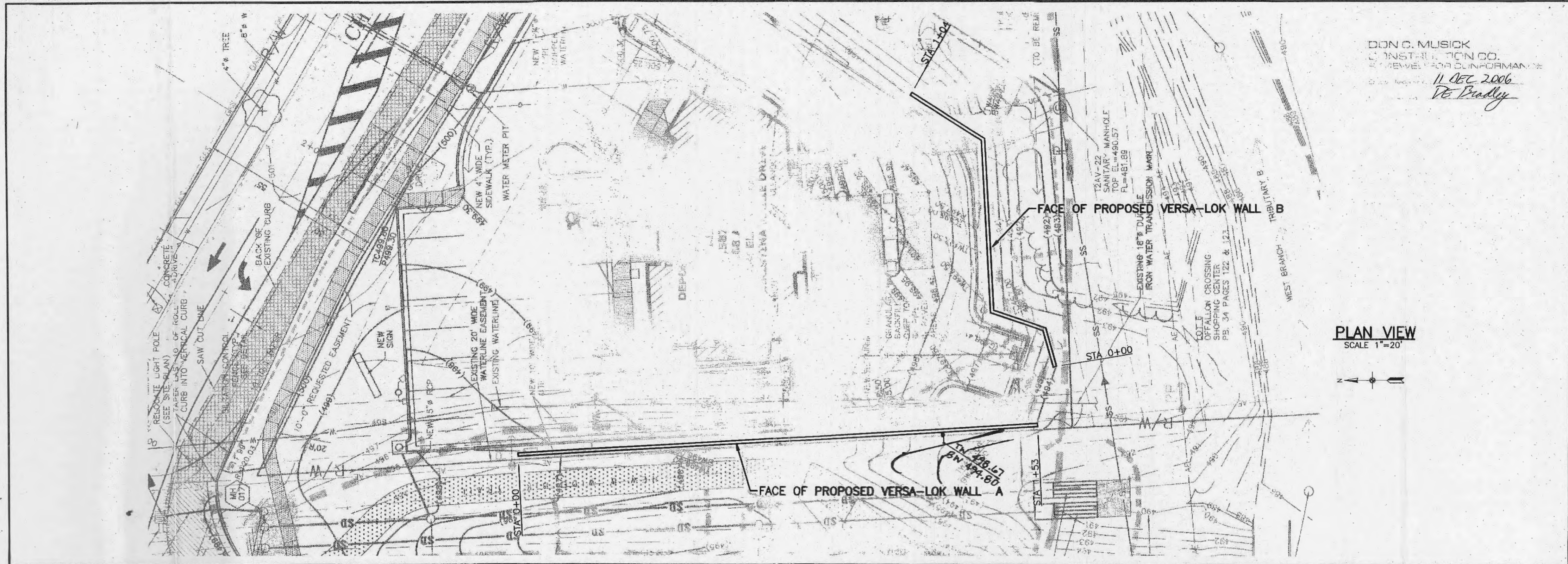
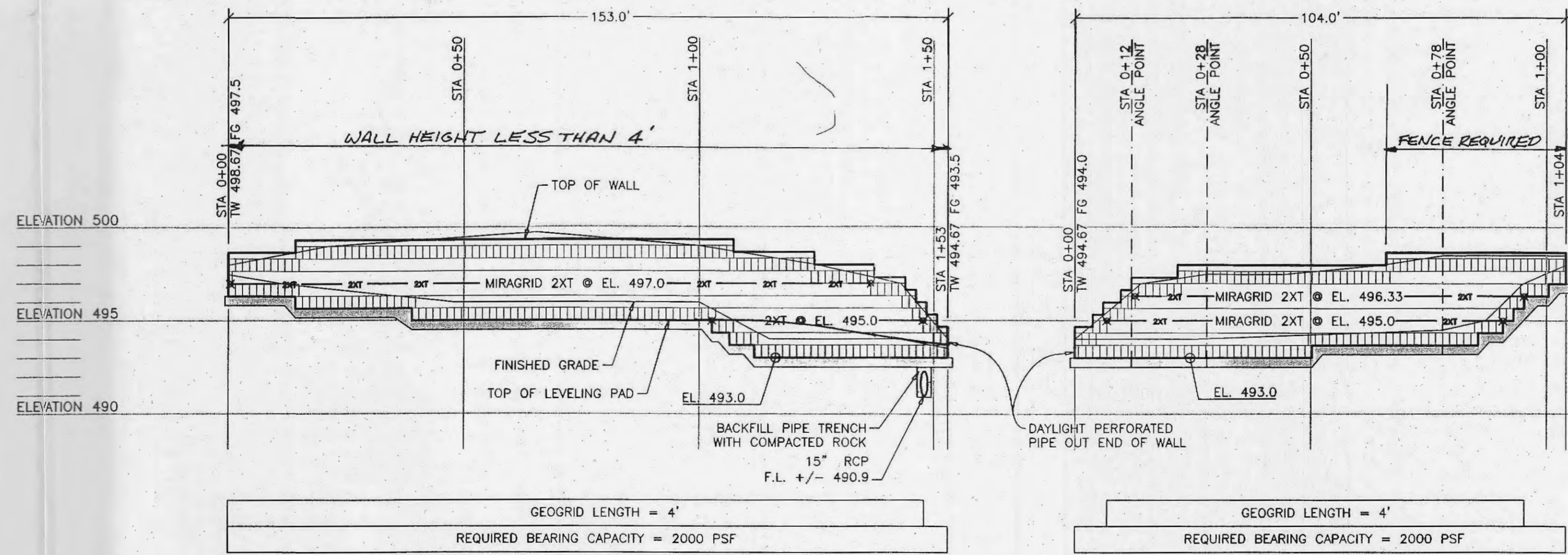


DON C. MUSICK
 LICENSED PROFESSIONAL ENGINEER
 11 DEC 2006
De Bradley



PLAN VIEW
 SCALE 1"=20'



EXCEPTIONS AS NOTED
 BUESCHER DITCH & ASSOCIATES, INC.
 12/26/06

RECEIVED
 JAN 08 2007
 MUSICK

STATE OF MISSOURI
 EDWARD T. AUSTIN
 LICENSED PROFESSIONAL ENGINEER
 E-22542

- NOTES:
1. THIS WALL DESIGN IS BASED ON THE PROJECT PLANS PREPARED BY BUESCHER DITCH AND ASSOCIATES DATED 8-28-06.
 2. SEE THE PROJECT PLANS FOR WALL LAYOUT.
 3. THE CONTRACTOR SHALL VERIFY ELEVATIONS PRIOR TO CONSTRUCTION.
 4. TEMPORARY EXCAVATION STABILITY DESIGN AND THE SHORING REQUIREMENTS ARE BEYOND THE SCOPE OF THIS DESIGN AND ARE THE RESPONSIBILITY OF THE CONTRACTOR.
 5. THE TW/BW NOTATIONS ON THE PROJECT PLAN VIEWS ARE THE ESTIMATED ELEVATIONS PROVIDED BY THE PROJECT ENGINEER. SEE THE RETAINING WALL ELEVATION VIEWS FOR ACTUAL TOP OF WALL ELEVATIONS.
 6. ANGLE POINTS MAY BE CONSTRUCTED AS RADIUS CORNERS WITH THE APPROVAL OF THE OWNER.
 7. COORDINATE SEWER CONSTRUCTION AND UTILITY CONSTRUCTION WITH WALL CONSTRUCTION TO PREVENT DAMAGE TO GEOGRIDS AND THE RETAINING WALL SYSTEM.



Aspen Consultants
 293 Northwest Blvd., Fenton, MO 63026
 Phone: (636) 349-2225 Fax: (636) 349-2230

SIGNATURE BANK O'Fallon, MO	
VERSAs-LOK WALL	PLAN/ELEVATION VIEW
Revision: 11-30-06, New Wall Layout	Date: 10-13-2006
Revision:	Sheet: 1 of 2

CITY OF O'FALLON
 COMMUNITY DEVELOPMENT DEPARTMENT
 ACCEPTED FOR CONSTRUCTION
 BY: *[Signature]* DATE: 3-7-07
 PROFESSIONAL ENGINEER'S SEAL
 INDICATES RESPONSIBILITY FOR DESIGN

Contractor