

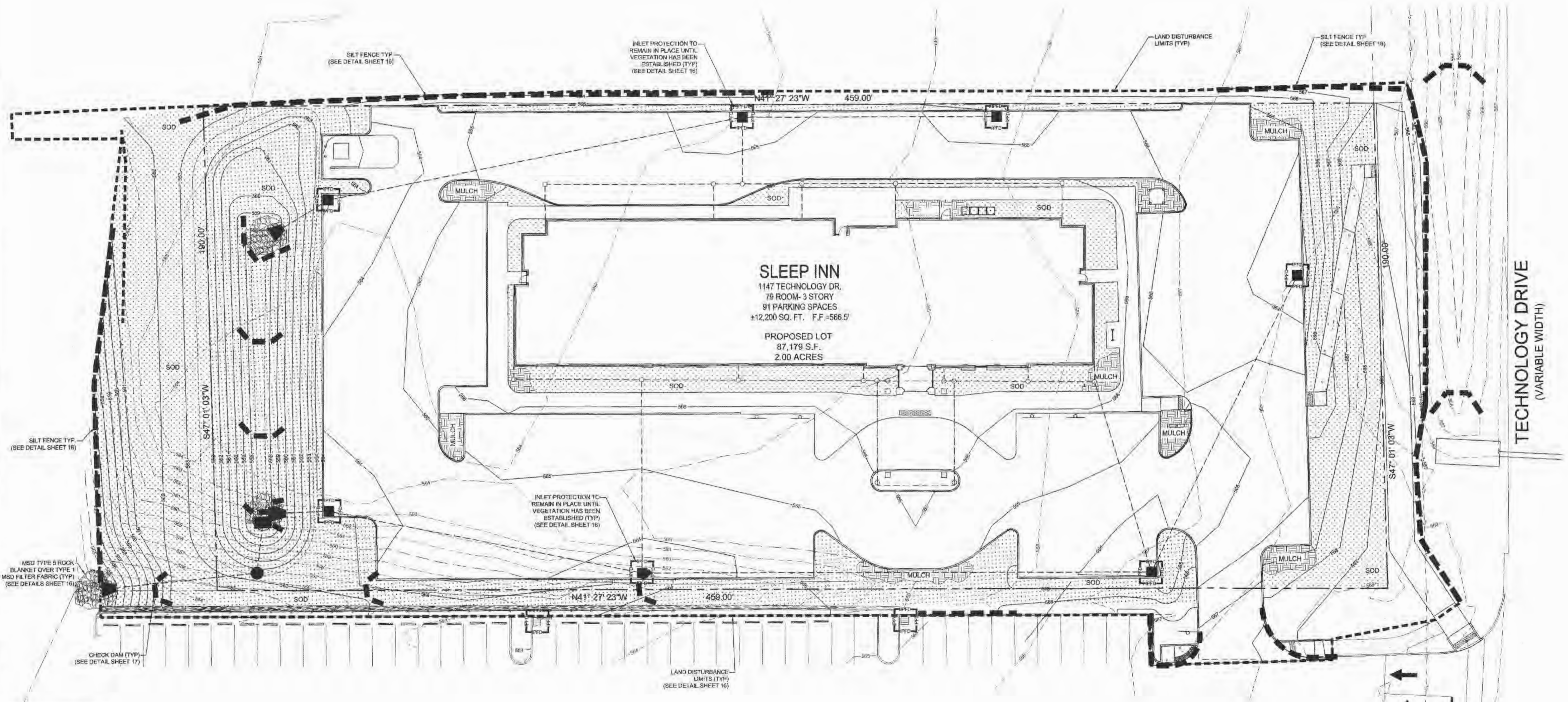
NOTES:

- REFER TO THE EROSION CONTROL DETAILS FOR CONSTRUCTION METHODS OF THESE DEVICES.
- CONTRACTOR MUST WASH DOWN ALL VEHICLES DURING CONSTRUCTION. CONTRACTOR SHALL KEEP ALL MUD AND DEBRIS OFF OF ALL CITY AND COUNTY STREETS.
- LOCATION AND FINAL DIMENSIONS OF ALL WASHDOWN AND STAGING AREAS SHALL BE BY THE GENERAL CONTRACTOR, AND SHALL BE IN COMPLIANCE WITH BEST MANAGEMENT PRACTICES FOR STORMWATER POLLUTION PREVENTION.
- ADDITIONAL SILTATION CONTROL SHALL BE INSTALLED AS REQUIRED BY THE CITY OF OFALLON.
- G.C. TO BE AWARE A LAND DISTURBANCE PERMIT WILL BE REQUIRED. SITEPLAN/PLAN APPROVAL IS NOT TO BE CONSTRUCTED AS APPROVAL OF A LAND DISTURBANCE PERMIT.

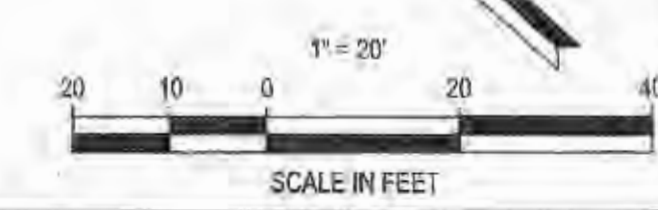
- ANY LAND CLEARING, CONSTRUCTION, OR DEVELOPMENT INVOLVING THE MOVEMENT OF EARTH SHALL BE IN ACCORDANCE WITH THE STORM WATER POLLUTION PREVENTION PLAN, AND THE PERSON ISSUED A LAND DISTURBANCE PERMIT ASSUMES AND ACKNOWLEDGES RESPONSIBILITY FOR COMPLIANCE WITH THE APPROVED STORM WATER POLLUTION PLAN AT THE SITE OF THE PERMITTED ACTIVITY.
- PRIOR TO ANY MAJOR LAND DISTURBANCE ACTIVITY, A LAND DISTURBANCE PERMIT FROM THE STATE OF MISSOURI DEPARTMENT OF NATURAL RESOURCES WILL BE REQUIRED.
- SOD SHALL BE PLACED IN THE R.O.W. ALONG MID RIVERS MALL DRIVE AND HIGHWAY N. IF SIGN COMPANY DISTURBS NEW SOD, THE CONTRACTOR SHALL REPLACE THE SOD TO THE CITY OF OFALLON SPECIFICATIONS.
- ALL EROSION CONTROL MEASURES MUST ABIDE BY THE CITY OF OFALLON SEDIMENT AND EROSION CONTROL SPECIFICATIONS AND GUIDELINES.
- THE GENERAL CONTRACTOR SHALL PROVIDE A SCHEDULE OF SEQUENCE FOR THE CONSTRUCTION AND LAND DISTURBANCE ACTIVITIES TAILORED TO THE SPECIFIC EROSION CONTROL PHASE DEPICTED ON THIS SHEET.
- THE ADS FLEXSTORM FILTERS (OR APPROVED EQUAL) SHALL BE INSTALLED WITHIN DESIGNATED STORM SEWER STRUCTURES AFTER SOD HAS BEEN INSTALLED.

SILTATION CONTROL PLAN LEGEND

SYMBOL	
	SYNTHETIC FILTER BARRIER DETAIL ESC-5 SHEET 16
	VEHICLE WASHDOWN AREA & CONSTRUCTION ENTRANCE DETAIL ESC-4 SHEET 16
	INLET PROTECTION FABRIC DROP DETAIL ESC-14 SHEET 16
	LAND DISTURBANCE LIMITS
	SOD
	MULCH
	OFF STREET GRAVEL PARKING
	CHECK DAM



NOTE:
Underground utilities and structures have been plotted from available information and therefore, their location must be considered approximate only. It is the responsibility of the individual contractors to notify the utility companies before actual construction.



SLEEP INN
NEW PROJECT FOR
79 UNIT
SLEEP INN HOTEL
1147 TECHNOLOGY DR
O'FALLON, MO

SLONE ARCHITECTS
1200 E. WOODHURST DR.
SUITE J-100
SPRINGFIELD, MO 65804
P: 417.887.4575
F: 417.887.5080
SLONEARCHITECTS.COM

PREMIER CIVIL ENGINEERING
308 TCW Court
Lave Saint Louis, MO 63107
Phone: (314) 928-1100
Missouri Certificate of Authority # LS-301100003
Missouri Certificate of Authority # LS-3012007649

ENGINEER'S AUTHENTICATION
STATE OF MISSOURI
Professional Engineer
STEVE MARON P.E.
PROFESSIONAL ENGINEER
LICENSE NUMBER
PE200600195

Developer / Owner Information
GRANITE HOTELS, LLC
74 VIA PREMINENTA
SUNRISE BEACH, MO 65079

FINAL EROSION CONTROL PLAN

P+Z No. 09-15.02 & 09-15.03
APPROVED 5-7-2015

City No. 15-494

Sheet Number:
8

PCE PROJECT NO. 147401

I:\vault-pc\vault\CIVIL_3D_PROJECTS\2014\147401_SLEEP INN OF ALLON\COMMERCIAL\CONSTRUCTION DRAWINGS\147401 - EROSION CONTROL PLAN.dwg