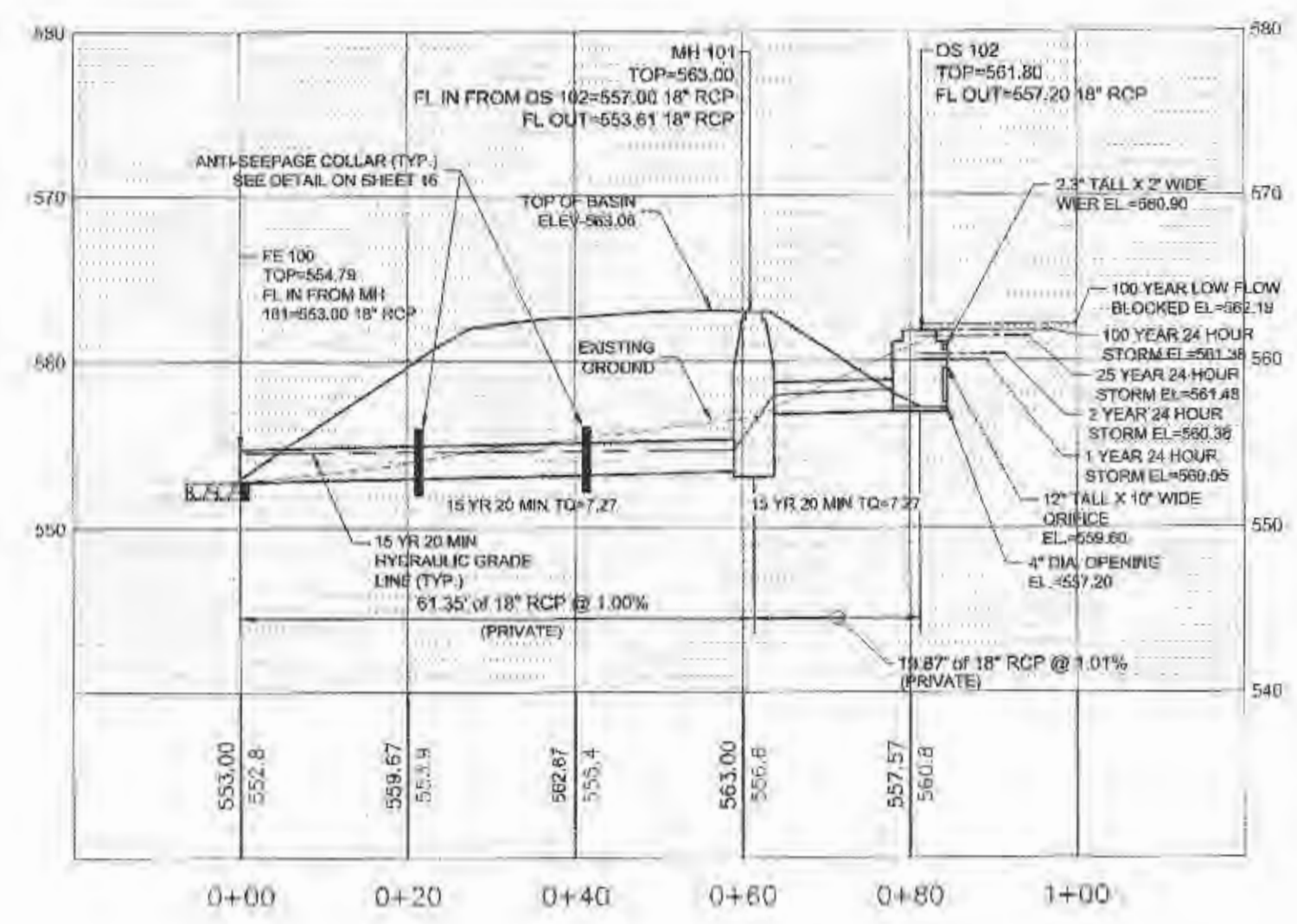
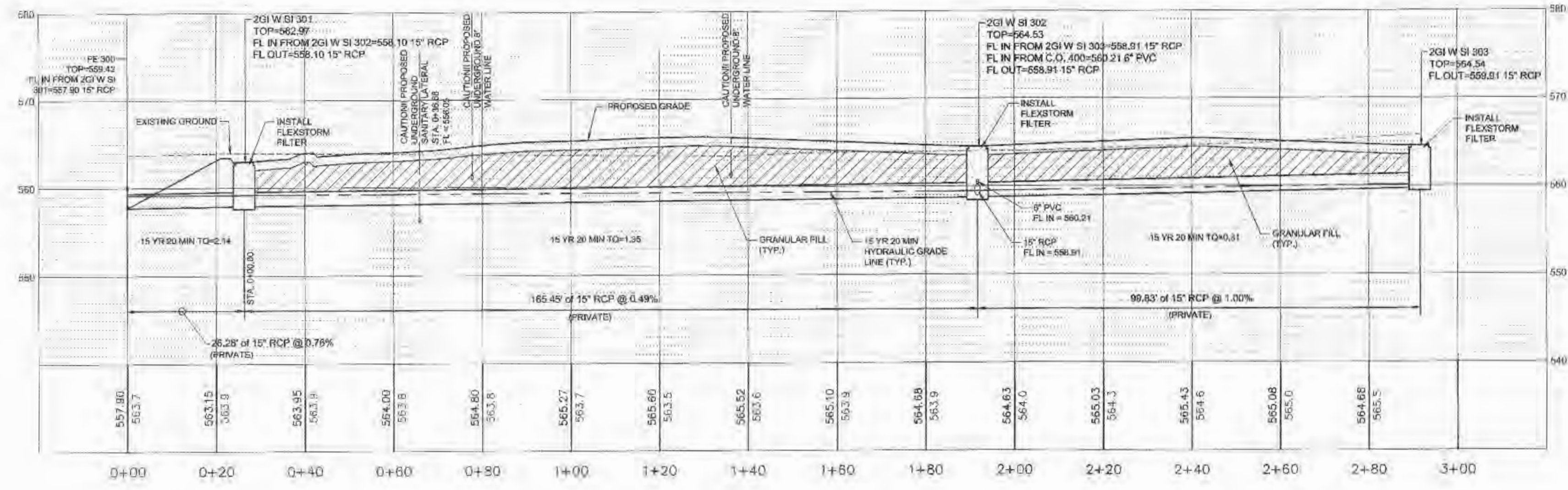


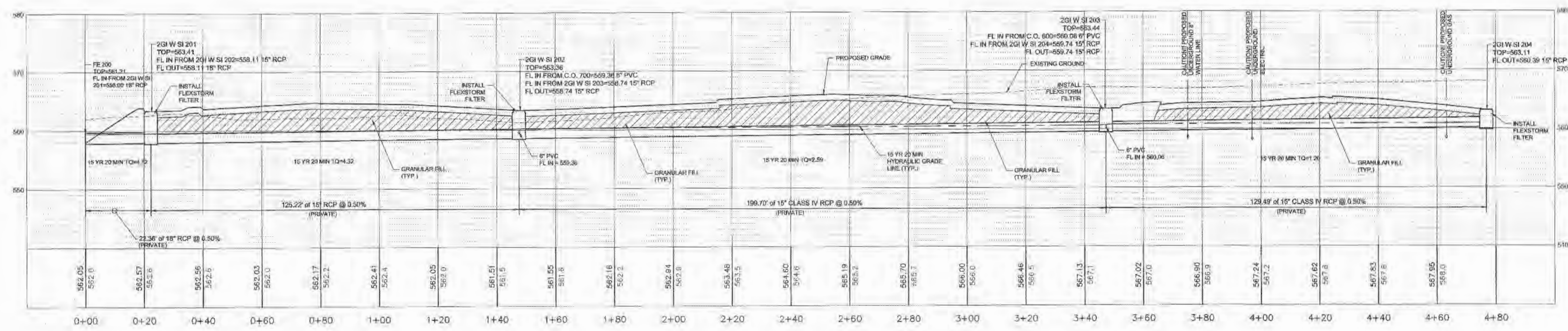
I:\vault-pc\va\civil_3d\PROJECTS\2014\147401-SLEEP INN OF FALLON\COMMERCIAL\CONSTRUCTION DRAWINGS\147401 - STORM SEWER PROFILES.dwg



HORIZONTAL SCALE: 1" = 20'
VERTICAL SCALE: 1" = 10'



HORIZONTAL SCALE: 1" = 20'
VERTICAL SCALE: 1" = 10'



HORIZONTAL SCALE: 1" = 20'
VERTICAL SCALE: 1" = 10'

15 YEAR 20 MINUTE STORM

LineNo.	LineID	InletID	LineLength (ft)	LineSize (in)	InvertUp (ft)	InvertDn (ft)	Grnd/RimElev Up (ft)	DepthUp (ft)	HGLUp (ft)	HGLDn (ft)	Rim-Hw (ft)	RunoffCoeff (C)	VelDn (ft/s)	VelHd Dn (ft/s)	J-LossCoeff	EnergyLoss (ft)	MinorLoss (ft)	CrossSlope, Sx (ft/ft)	CapacityFull (cfs)	DrainageArea (ac)	KnownQ (cfs)	FlowRate (cfs)	QCaptured (cfs)	InletEff (%)
1	2GI 301 TO FE 300	2GI W SI 301	26.281	15	558.1	557.9	562.97	1.07	559.17	559.15	3.77	0	1.74	0.05	0.6	0.028	0.03	0.02	5.63	0	0.79	2.14	0.73	100
2	2GI 302 TO 2GI 301	2GI W SI 302	165.454	15	558.91	558.1	564.53	0.51	559.42	559.28	5.05	0	1.18	0.02	0.5	0.328	0.06	0.02	4.52	0	1.04	1.35	1.04	100
3	2GI 303 TO 2GI 302	2GI W SI 303	99.833	15	559.91	558.91	564.54	0.22**	560.13	559.48	4.41	0	0.56	0.07	1	0	n/a	0.02	6.46	0	0.31	0.31	0.31	100
4	2GI 201 TO FE 200	2GI W SI 201	22.36	18	558.11	558	563.41	1.43	559.54	559.5	3.81	0	2.68	0.11	0.5	0.043	0.06	0.02	7.36	0	0.4	4.74	0.4	100
5	2GI 202 TO 2GI 201	2GI W SI 202	125.221	15	558.74	558.11	563.36	1.25	560.16	559.6	3.1	0	3.54	0.19	0.5	0.566	0.1	0.02	4.58	0	1.73	4.34	1.73	100
6	2GI 203 TO 2GI 202	2GI W SI 203	199.697	15	559.74	558.74	563.44	0.86	560.6	560.26	2.66	0	2.13	0.07	1.37	0.405	0.18	0.02	4.57	0	1.39	2.61	1.39	100
7	2GI 204 TO 2GI 203	2GI W SI 204	129.493	15	560.39	559.74	563.53	0.51	560.9	560.78	2.52	0	1.12	0.02	1	0.206	0.1	0.02	4.58	0	1.22	1.22	1.22	100
8	FE100 TO MH 101	MH 101	61.351	18	553.61	553	563	1.05**	554.66	554.5	7.88	0	4.11	0.26	0.98	0.359	n/a	10.47	0	0	7.27
9	MH 101 TO OS 102	OS 102	19.872	18	557.2	557	561.8	1.04**	558.32	558	3.48	0	6.43	0.48	1	0	0.48	0.02	10.54	0	7.27	7.27	6.56	90

100 YEAR 20 MINUTE STORM

LineNo.	LineID	InletID	LineLength (ft)	LineSize (in)	InvertUp (ft)	InvertDn (ft)	Grnd/RimElev Up (ft)	DepthUp (ft)	HGLUp (ft)	HGLDn (ft)	Rim-Hw (ft)	RunoffCoeff (C)	VelDn (ft/s)	VelHd Dn (ft/s)	J-LossCoeff	EnergyLoss (ft)	MinorLoss (ft)	CrossSlope, Sx (ft/ft)	CapacityFull (cfs)	DrainageArea (ac)	KnownQ (cfs)	FlowRate (cfs)	QCaptured (cfs)	InletEff (%)
1	2GI 301 TO FE 300	2GI W SI 301	26.281	15	558.1	557.9	562.97	1.1	559.2	559.15	3.69	0	2.71	0.11	0.6	0.066	0.08	0.02	5.63	0	1.25	3.33	1.25	100
2	2GI 302 TO 2GI 301	2GI W SI 302	165.454	15	558.91	558.1	564.53	0.64	559.55	559.28	4.9	0	1.73	0.05	0.5	0.391	0.08	0.02	4.52	0	1.6	2.08	1.6	100
3	2GI 303 TO 2GI 302	2GI W SI 303	99.833	15	559.91	558.91	564.54	0.27**	560.18	559.63	4.36	0	0.65	0.09	1	0	n/a	0.02	6.46	0	0.48	0.48	0.48	100
4	2GI 201 TO FE 200	2GI W SI 201	22.36	18	558.11	558	563.41	1.5	559.61	559.5	3.66	0	4.21	0.27	0.5	0.111	0.14	0.02	7.36	0	0.64	7.43	0.64	100
5	2GI 202 TO 2GI 201	2GI W SI 202	125.221	15	558.74	558.11	563.36	1.25	561.13	559.75	1.99	0	5.53	0.48	0.5	1.385	0.24	0.02	4.58	0	2.72	6.79	2.72	100
6	2GI 203 TO 2GI 202	2GI W SI 203	199.697	15	559.74	558.74	563.44	1.25	562.16	561.37	1.04	0	3.32	0.17	1.37	0.793	0.23	0.02	4.57	0	2.18	4.07	2.18	100
7	2GI 204 TO 2GI 203	2GI W SI 204	129.493	15	560.39	559.74	563.53	1.25	562.51	562.4	0.98	0	1.54	0.04	1	0.111	0.04	0.02	4.58	0	1.89	1.89	1.89	100
8	FE100 TO MH 101	MH 101	61.351	18	553.61	553	563	1.5	555.33	554.5	6.95	0	6.89	0.74	0.98	0.826	0.72	10.47	0	0	12.18
9	MH 101 TO OS 102	OS 102	19.872	18	557.2	557	561.8	1.5	558.85	558.58	2.21	0	6.89	0.74	1	0.267	0.74	0.02	10.54	0	12.18	12.18	10.6	87

- NOTES:
- ALL NEW STORM SEWERS ARE PRIVATE.
 - WATER TIGHT A-LOCK JOINTS SHALL BE PROVIDED ON ALL STORM SEWERS.
 - THE CONTRACTOR SHALL VISIT THE SITE PRIOR TO SUBMITTAL OF HIS/HER BIDS TO CONFIRM THAT THE SITE CONDITIONS ARE AS SHOWN ON THESE PLANS. ANY CONDITION THAT IS DIFFERENT THAN WHAT IS SHOWN ON THESE PLANS SHALL BE BROUGHT TO THE ATTENTION OF THE ENGINEER PRIOR TO SUBMITTAL OF BIDS.
 - STRUCTURE 201, 202, 203, 204, 301, 302 AND 303 SHALL HAVE A FLEXSTORM FILTER (OR APPROVED EQUAL) INSTALLED AFTER SITE HAS BEEN PAVED.

- STORM SEWER PROFILE NOTES
- MH DENOTES MANHOLE
 - GI DENOTES GRATE INLET
 - SD DENOTES SLOTTED DRAIN
 - FE DENOTES FLARED END SECTION
 - OS DENOTES SLOTTED DRAIN
 - OS DENOTES OUTFALL STRUCTURE
 - TO DENOTES TOTAL O TO PIPE
 - DENOTES SURCHARGED HGL
 - DENOTES HYDRAULIC JUMP IN INLET OR LINE
- ALL DIMENSIONS ARE TO THE CENTERLINE OF STRUCTURE TO THE END OF FLARED END SECTION OR TO THE END OF PIPE AT E.P.S.
 - BACK FILL REQUIREMENTS FOR ADS N-12 IS CLASS 3 @ 95% STANDARD PROCTOR DRY DENSITY, DEEPER THAN 10 FEET BELOW FINISHED GRADE, AT LEAST 95% OF THE MATERIAL'S MAXIMUM STANDARD PROCTOR DRY DENSITY.

THE CONTRACTOR SHALL VISIT THE SITE PRIOR TO SUBMITTAL OF HIS/HER BIDS TO CONFIRM THAT THE SITE CONDITIONS ARE AS SHOWN ON THESE PLANS. ANY CONDITION THAT IS DIFFERENT THAN WHAT IS SHOWN ON THESE PLANS SHALL BE BROUGHT TO THE ATTENTION OF THE ENGINEER PRIOR TO SUBMITTAL OF BIDS.

1-800-DIG-RITE
CALL BEFORE YOU DIG

NOTE:
Underground utilities and structures have been plotted from available information and therefore, their location must be considered approximate only. It is the responsibility of the individual contractors to notify the utility companies before actual construction.

SLEEP INN
NEW PROJECT FOR
79 UNIT
SLEEP INN HOTEL
1147 TECHNOLOGY DR
O'FALLON, MO

SLONE ARCHITECTS
1200 E. WOODHURST DR.
SUITE J-100
SPRINGFIELD, MO 65804
P: 417.887.4575
F: 417.887.5080
SLONEARCHITECTS.COM

PREMIER CIVIL ENGINEERING
308 TCHY Court
Lake St. Louis, MO 63367
Phone: (314) 925-7444 Fax: (314) 925-7457
Missouri Certificate of Authority # E-2011000031
Missouri Certificate of Authority # LS-2012007848

ENGINEER'S AUTHENTICATION
The responsibility for professional engineering liability on this project is hereby limited to the list of plans authorized by the seal, signature, and date hereon appearing. Incompetence or negligence by all other engineering plans involved in this project and specifically excluded hereon after the date of this authentication.

STEVE MARCHIONE
REGISTERED PROFESSIONAL ENGINEER
PE20080105
STATE OF MISSOURI
EXPIRES 12/31/15

Developer / Owner Information
GRANITE HOTELS, LLC
74 VIA PREMINENTA
SUNRISE BEACH, MO 65079

P+Z No. 09-15.02 & 09-15.03
APPROVED 5-7-2015
City No. 15-494
Sheet Number:
9
PCE PROJECT NO. 147401

STORM SEWER PROFILES