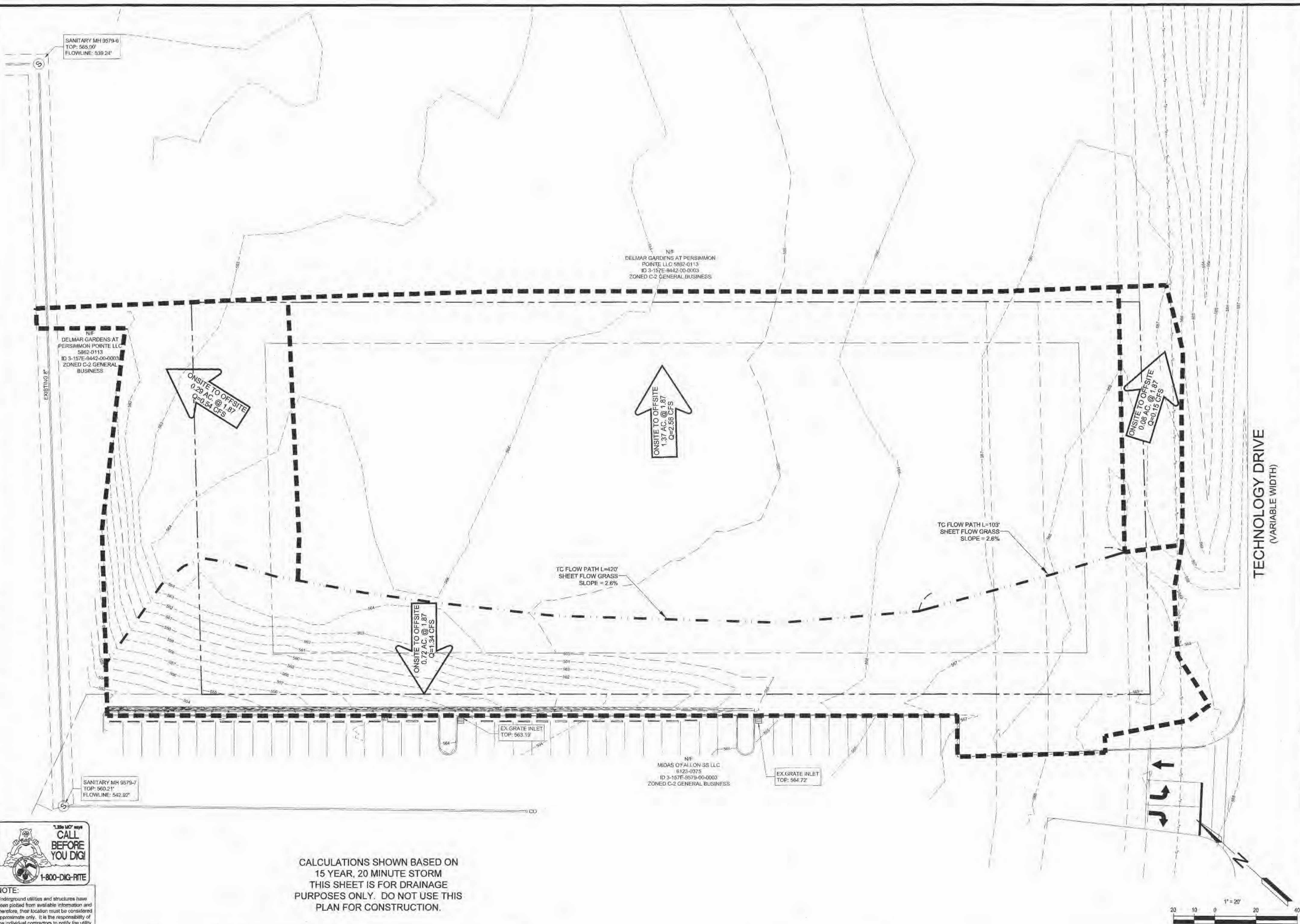


\\vault-pcva\civil\3D PROJECTS\2014\147401 SLEEP INN OF FALLON\COMMERCIAL\CONSTRUCTION DRAWINGS\17 PRE-DEVELOPED DRAINAGE AREA MAP.dwg



SANITARY MH 9579-6  
TOP: 565.00'  
FLOWLINE: 539.24'

N/F  
DELMAR GARDENS AT PERSIMMON  
POINTE LLC 5862-0113  
ID 3-157E-8442-00-0003  
ZONED C-2 GENERAL BUSINESS

N/F  
DELMAR GARDENS AT PERSIMMON  
POINTE LLC 5862-0113  
ID 3-157E-8442-00-0003  
ZONED C-2 GENERAL BUSINESS

ONSITE TO OFFSITE  
0.28 AC @ 1.87  
Q=0.54 CFS

ONSITE TO OFFSITE  
1.37 AC @ 1.87  
Q=2.55 CFS

ONSITE TO OFFSITE  
0.08 AC @ 1.87  
Q=0.15 CFS

ONSITE TO OFFSITE  
0.72 AC @ 1.87  
Q=1.34 CFS

TC FLOW PATH L=420'  
SHEET FLOW GRASS  
SLOPE = 2.6%

TC FLOW PATH L=103'  
SHEET FLOW GRASS  
SLOPE = 2.6%

SANITARY MH 9579-7  
TOP: 563.21'  
FLOWLINE: 542.82'

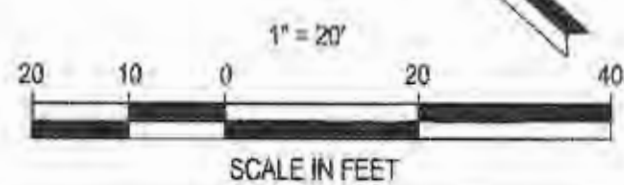
N/F  
MIDAS OF FALLON SS LLC  
6123-0375  
ID 3-157E-9579-00-0003  
ZONED C-2 GENERAL BUSINESS

EX GRATE INLET  
TOP: 564.72'



NOTE:  
Underground utilities and structures have been plotted from available information and therefore, their location must be considered approximate only. It is the responsibility of the individual contractors to notify the utility companies before actual construction.

NOTE:  
CALCULATIONS SHOWN BASED ON 15 YEAR, 20 MINUTE STORM  
THIS SHEET IS FOR DRAINAGE PURPOSES ONLY. DO NOT USE THIS PLAN FOR CONSTRUCTION.



PROJECT TITLE

**SLEEP INN**  
NEW PROJECT FOR  
79 UNIT  
SLEEP INN HOTEL  
1147 TECHNOLOGY DR  
O'FALLON, MO

**SLONE ARCHITECTS**  
1200 E. WOODHURST DR.  
SUITE J-100  
SPRINGFIELD, MO 65804  
P: 417.887.4575  
F: 417.887.5060  
SLONEARCHITECTS.COM

**PREMIER CIVIL  
ENGINEERING**



308 TCW Court  
Lake Shore LMA, MO 63387  
Phone: (314) 925-7444 Fax: (314) 925-7457  
Missouri Certificate of Authority # E-2011000031  
Missouri Certificate of Authority # LS-2012007848

ENGINEER'S AUTHENTICATION  
The responsibility for professional engineering, held by the signatory, shall be limited to the work of design and calculation by the signatory, and shall not include the design of the project or the construction of the project. The signatory shall not be held responsible for any errors or omissions in the project or the construction of the project.



Developer / Owner Information  
**GRANITE HOTELS, LLC**  
74 VIA PREMINENTA  
SUNRISE BEACH, MO 65079

PRE-DEVELOPED DRAINAGE AREA MAP

P+Z No. 09-15.02 & 09-15.03  
APPROVED 5-7-2015

City No. 15-494

Sheet Number:

17  
PCE PROJECT NO. 147401