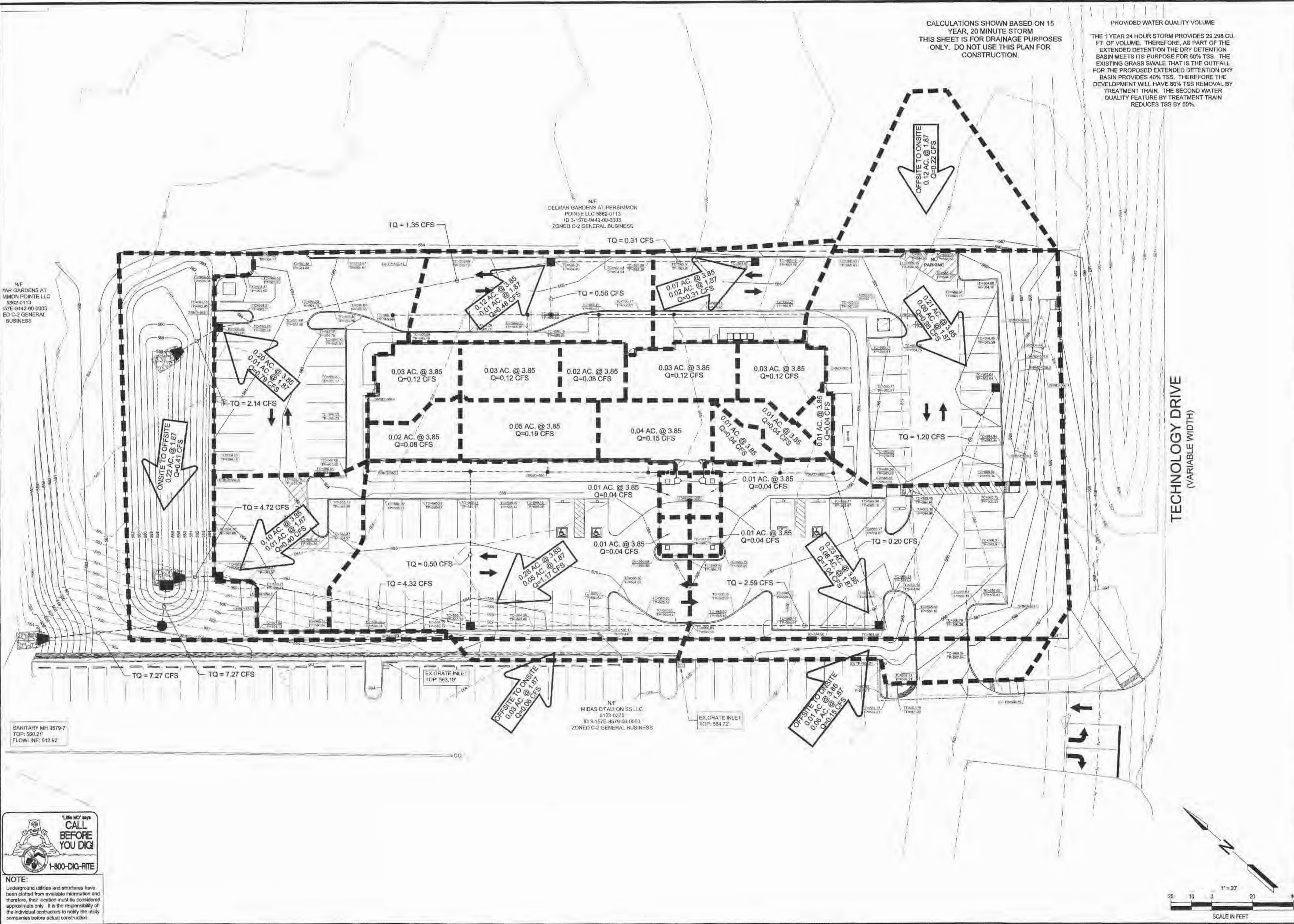


\\vaupl-pc\vaupl\civil_3d\PROJECTS\2014\147401 SLEEP INN OF FALLON\COMMERCIAL\CONSTRUCTION DRAWINGS\18 POST-DEVELOPED DRAINAGE AREA MAP.dwg



CALCULATIONS SHOWN BASED ON 15 YEAR, 20 MINUTE STORM THIS SHEET IS FOR DRAINAGE PURPOSES ONLY. DO NOT USE THIS PLAN FOR CONSTRUCTION.

PROVIDED WATER QUALITY VOLUME THE 1 YEAR 24 HOUR STORM PROVIDES 29,298 CU. FT. OF VOLUME. THEREFORE, AS PART OF THE EXTENDED DETENTION THE DRY DETENTION BASIN MEETS ITS PURPOSE FOR 80% TSS. THE EXISTING GRASS SWALE THAT IS THE OUTFALL FOR THE PROPOSED EXTENDED DETENTION DRY BASIN PROVIDES 40% TSS. THEREFORE THE DEVELOPMENT WILL HAVE 80% TSS REMOVAL BY TREATMENT TRAIN. THE SECOND WATER QUALITY FEATURE BY TREATMENT TRAIN REDUCES TSS BY 50%.

N/F FAR GARDENS AT MMON POINTE LLC 5862-0113 157E-9442-00-0003 ED C-2 GENERAL BUSINESS

N/F DELMAR GARDENS AT PERSIMMON POINTE LLC 5862-0113 ID 3-157E-9442-00-0003 ZONED C-2 GENERAL BUSINESS

N/F MIDAS OF FALLON SS LLC 6125-0375 ID 3-157E-9579-00-0003 ZONED C-2 GENERAL BUSINESS

SANITARY MH 9579-7 TOP: 560.21' FLOWLINE: 542.92'



NOTE: Underground utilities and structures have been plotted from available information and therefore, their location must be considered approximate only. It is the responsibility of the individual contractors to notify the utility companies before actual construction.

PROJECT TITLE

SLEEP INN
NEW PROJECT FOR 79 UNIT SLEEP INN HOTEL 1147 TECHNOLOGY DR O'FALLON, MO

SLONE ARCHITECTS
1200 E. WOODHURST DR SUITE J-100 SPRINGFIELD, MO 65804 P: 417.887.4575 F: 417.887.5060 SLONEARCHITECTS.COM

PREMIER CIVIL ENGINEERING



308 TCW Court
Lave Saint Louis, MO 63367
Phone: (314) 925-7444 Fax: (314) 925-7457
Missouri Certificate of Authority # E-2011000031
Missouri Certificate of Authority # LS-2012007045

ENGINEERS AUTHENTICATION
This measurement for professional engineering liability on this project is hereby limited to the act of design and calculation for the work indicated, and does not include the responsibility for construction to it. All other engineering shall be the responsibility of the contractor and shall not constitute a part of this plan or drawing.



STATE OF MISSOURI
STEVE HANSON P.E.
ENGINEER
PROFESSIONAL ENGINEER

Developer / Owner Information
GRANITE HOTELS, LLC
74 VIA PREMINENTA
SUNRISE BEACH, MO 65078

P+Z No. 09-15.02 & 09-15.03
APPROVED 5-7-2015

City No. 15-494

Sheet Number:

18
PCE PROJECT NO. 147401

TECHNOLOGY DRIVE
(VARIABLE WIDTH)

