

PLANT SCHEDULE

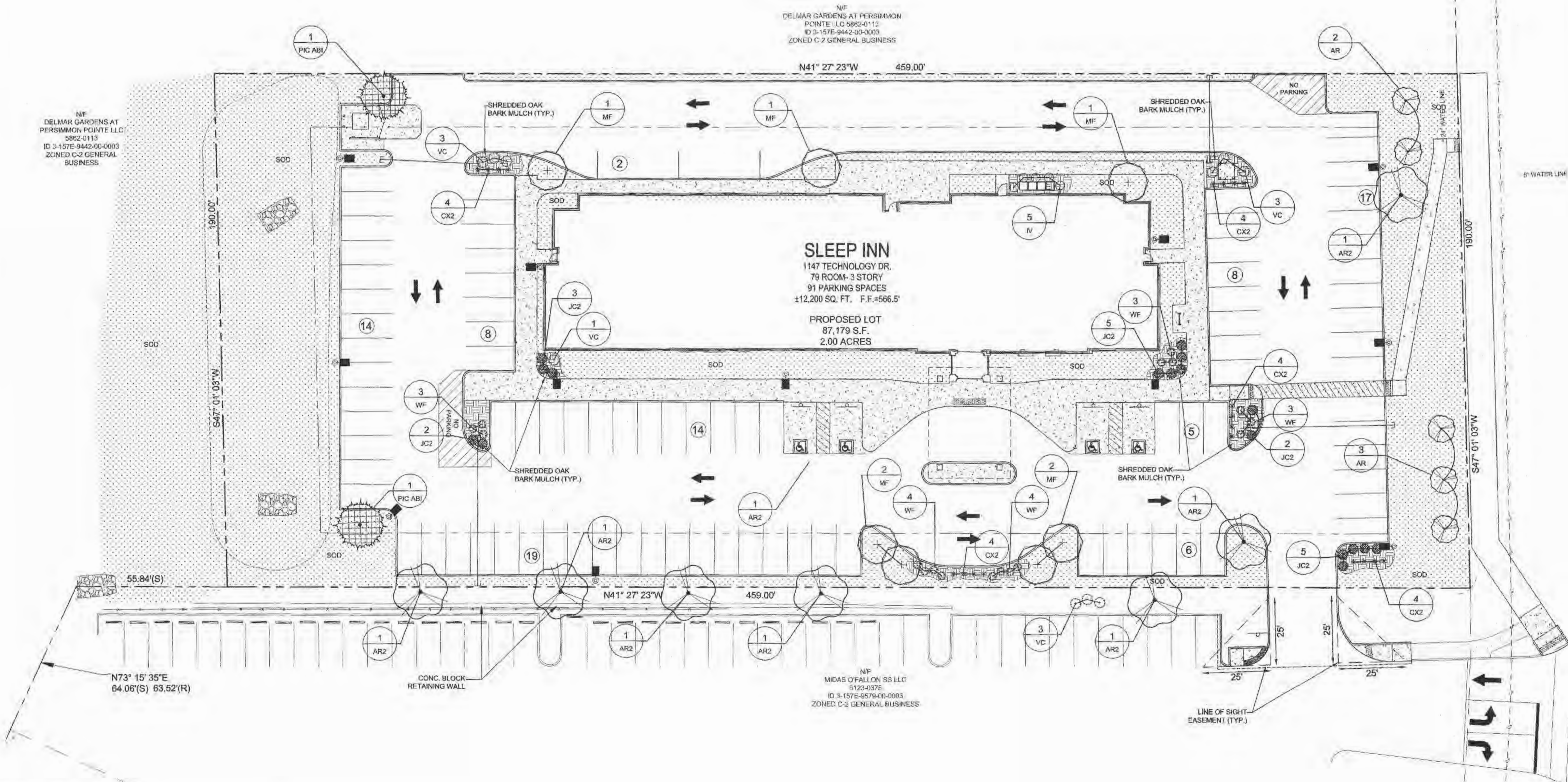
TREES	QTY	BOTANICAL NAME	COMMON NAME	CONT	GAL	SIZE
AR	5	Acer rubrum 'Red Rocket'	RED ROCKET MAPLE	B & B	2" CAL	
AR2	7	Acer rubrum 'October Glory' TM	OCTOBER GLORY MAPLE	B & B	2" CAL	
MF	7	Malus floribunda 'Pam's' TM	PINK PRINCESS CRABAPPLE	B & B		4'-6" H
EVERGREEN TREES	QTY	BOTANICAL NAME	COMMON NAME	CONT	GAL	SIZE
PIC ABI	2	Picea abies	NORWAY SPRUCE	B & B		6'-7'
SHRUBS	QTY	BOTANICAL NAME	COMMON NAME	SIZE		
CX2	20	Carex x 'Phoenix Green'	ICE DANCE SEDGE	1 GAL		
IV	5	Itea virginica 'Henry's Garnet'	HENRY'S GARNET SWEETSPIRE	3 GAL		
JC2	17	Juniperus conferta 'Compacta'	SHORE JUNIPER	3 GAL		
VC	10	Viburnum carlesii 'Compactum'	KOREAN SPICE VIBURNUM	5 GAL		
WF	17	Weigela florida 'Dark Horse'	WEIGELA	3 GAL		

LANDSCAPING REQUIREMENTS

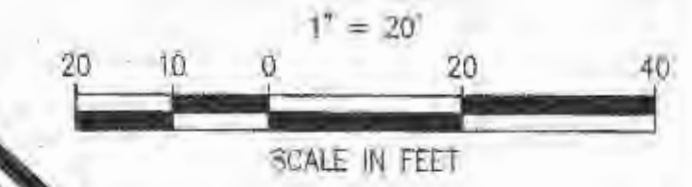
Street Trees
 1 tree for every 40' linear street frontage
 190' / 40 = 4.75 (5 street trees required)
 5 street trees provided

Landscaped Open Space
 1 tree for every 3,000 s.f. open space
 24,829 s.f. / 3,000 = 8.3 (9 trees required)
 11 trees provided

Interior Landscaping
 Not less than 6% of the interior of a parking lot shall be landscaped. The interior of a parking lot shall be calculated by multiplying the number of parking spaces by 270 square feet. Planting which is required along the perimeter of a parking lot shall not be considered as part of the interior landscaping requirement.
 91 spaces x 270 s.f. = 24,570 x 6% = 1,474 s.f. interior landscape required
 1,667 s.f. provided



TECHNOLOGY DRIVE
 (VARIABLE WIDTH)



I:\vault\p\va\civil_3d_projects\2014\147401_SLEEP INN OF FALLON\COMMERCIAL SITE PLAN\147401_LANDSCAPE PLAN.dwg

1-800-DIG-RITE
 CALL BEFORE YOU DIG!
 NOTE:
 Underground utilities and structures have been plotted from available information and therefore, their location must be considered approximate only. It is the responsibility of the individual contractor to notify the utility companies before actual construction.

SLEEP INN
 NEW PROJECT FOR
 79 UNIT
 SLEEP INN HOTEL
 1147 TECHNOLOGY DR
 O'FALLON, MO

SLONE ARCHITECTS
 ARCHITECTS & INTERIOR DESIGN
 1200 E. WOODHURST DR.
 SUITE J-100
 SPRINGFIELD, MO 65804
 P: 417.887.4575
 F: 417.887.5080
 SLONEARCHITECTS.COM

PREMIER CIVIL ENGINEERING
 308 TOWN COURT
 Lake Saint Louis, MO 63367
 Phone: (314) 925-4744 Fax: (314) 925-7457
 Missouri Certificate of Authority # 15-2012007948

ENGINEERS AUTHENTICATION
 The responsibility for professional engineering liability on this project is hereby limited to the act of plans authorized by the seal, registration, and state number of license. Responsibility is disclaimed for all other engineering plans involved in this project and specifically includes revisions after the date of seal registration.



Developer / Owner Information
 GRANITE HOTELS, LLC
 74 VIA PREMINENTA
 SUNRISE BEACH, MO 65079

P+Z No. 09-15.02 & 09-15.03
 APPROVED 5-7-2015

City No. 15-494

Sheet Number:
L-1
 PCE PROJECT NO. 147401

LANDSCAPE PLAN