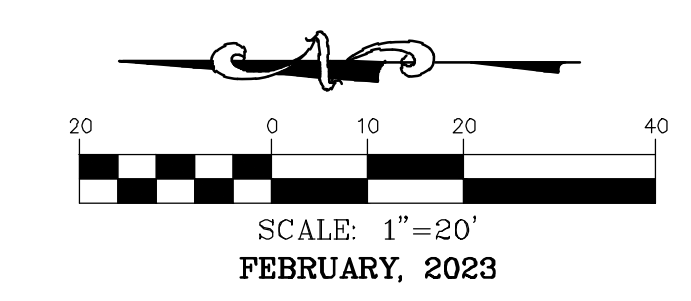
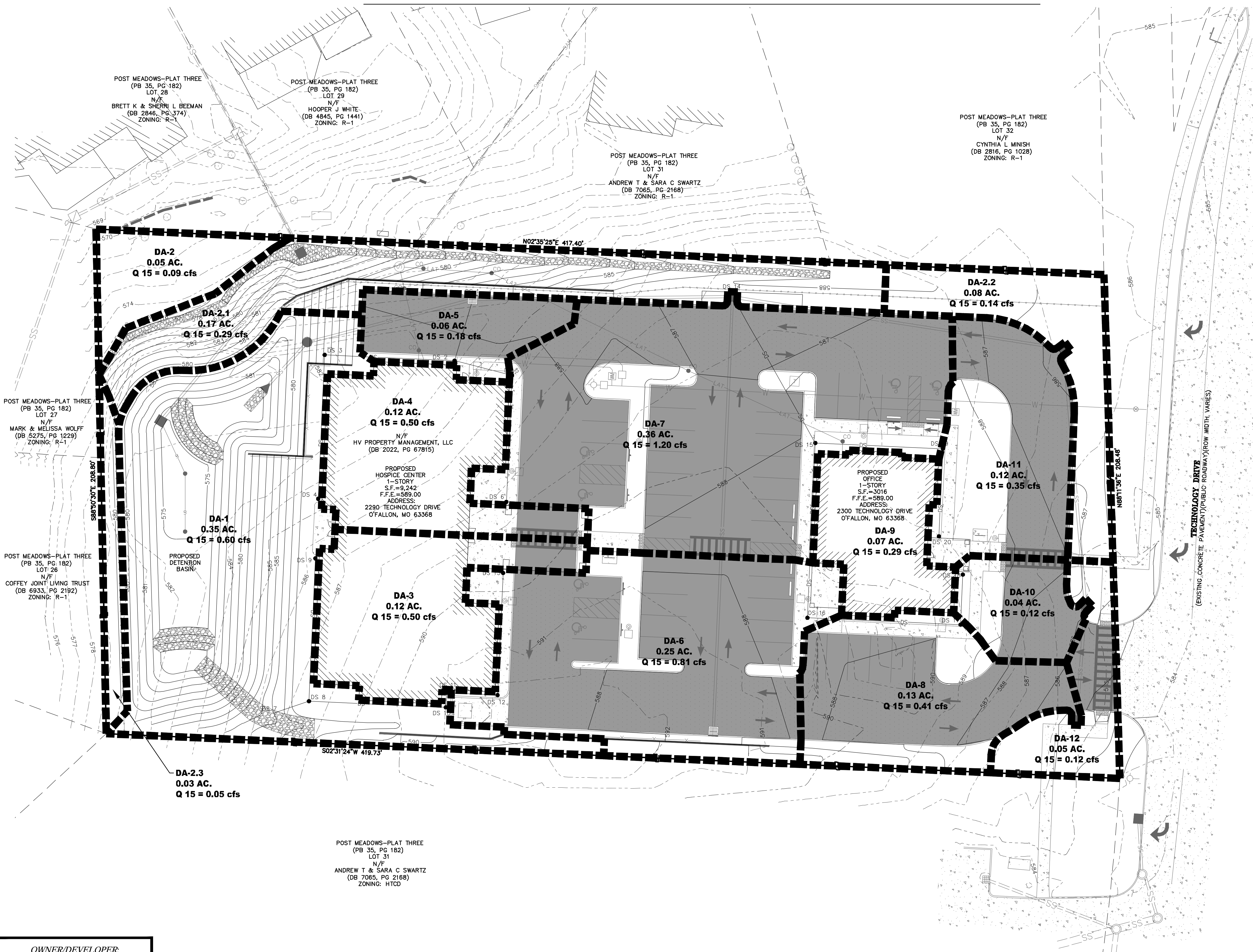


PROPOSED DRAINAGE AREA MAP



ALL AREAS	
PI VALUE OPEN = 1.70	
PI VALUE GRAVEL = 3.36	
PI VALUE PAVEMENT = 3.54	
PI VALUE BUILDING = 4.20	

DA-01 OPEN = 0.35 ACRES GRAVEL = 0.00 ACRES PAVEMENT/BUILDING = 0.00 ACRES $PI = (0.35 \cdot 1.70) + (0.00 \cdot 3.36) + (0.00 \cdot 3.54) = 0.595$ $Q(15YR, 20MIN) = API = (0.35)(1.70) = 0.60$	DA-02 OPEN = 0.08 ACRES GRAVEL = 0.00 ACRES PAVEMENT/BUILDING = 0.00 ACRES $PI = (0.08 \cdot 1.70) + (0.00 \cdot 3.36) + (0.00 \cdot 3.54) = 0.136$ $Q(15YR, 20MIN) = API = (0.08)(1.70) = 0.14$
DA-02.1 OPEN = 0.17 ACRES GRAVEL = 0.00 ACRES PAVEMENT/BUILDING = 0.00 ACRES $PI = (0.17 \cdot 1.70) + (0.00 \cdot 3.36) + (0.00 \cdot 3.54) = 0.289$ $Q(15YR, 20MIN) = API = (0.17)(1.70) = 0.29$	DA-02.2 OPEN = 0.08 ACRES GRAVEL = 0.00 ACRES PAVEMENT/BUILDING = 0.00 ACRES $PI = (0.08 \cdot 1.70) + (0.00 \cdot 3.36) + (0.00 \cdot 3.54) = 0.136$ $Q(15YR, 20MIN) = API = (0.08)(1.70) = 0.14$
DA-02.3 OPEN = 0.03 ACRES GRAVEL = 0.00 ACRES PAVEMENT/BUILDING = 0.00 ACRES $PI = (0.03 \cdot 1.70) + (0.00 \cdot 3.36) + (0.00 \cdot 3.54) = 0.051$ $Q(15YR, 20MIN) = API = (0.03)(1.70) = 0.05$	DA-03 OPEN = 0.00 ACRES GRAVEL = 0.00 ACRES PAVEMENT/BUILDING = 0.12 ACRES $PI = (0.00 \cdot 1.70) + (0.00 \cdot 3.36) + (0.12 \cdot 4.20) = 0.504$ $Q(15YR, 20MIN) = API = (0.12)(4.20) = 0.50$
DA-04 OPEN = 0.00 ACRES GRAVEL = 0.00 ACRES PAVEMENT/BUILDING = 0.12 ACRES $PI = (0.00 \cdot 1.70) + (0.00 \cdot 3.36) + (0.12 \cdot 4.20) = 0.504$ $Q(15YR, 20MIN) = API = (0.12)(4.20) = 0.50$	DA-05 OPEN = 0.00 ACRES GRAVEL = 0.00 ACRES PAVEMENT/BUILDING = 0.05 ACRES $PI = (0.00 \cdot 1.70) + (0.00 \cdot 3.36) + (0.05 \cdot 3.54) = 0.177$ $Q(15YR, 20MIN) = API = (0.05)(3.54) = 0.18$
DA-06 OPEN = 0.04 ACRES GRAVEL = 0.21 ACRES PAVEMENT/BUILDING = 0.00 ACRES $PI = (0.04 \cdot 1.70) + (0.21 \cdot 3.36) + (0.00 \cdot 3.54) = 0.81$ $Q(15YR, 20MIN) = API = (0.25)(3.25) = 0.81$	DA-07 OPEN = 0.04 ACRES GRAVEL = 0.00 ACRES PAVEMENT/BUILDING = 0.32 ACRES $PI = (0.04 \cdot 1.70) + (0.00 \cdot 3.36) + (0.32 \cdot 3.54) = 1.15$ $Q(15YR, 20MIN) = API = (0.36)(3.24) = 1.20$
DA-08 OPEN = 0.03 ACRES GRAVEL = 0.00 ACRES PAVEMENT/BUILDING = 0.10 ACRES $PI = (0.03 \cdot 1.70) + (0.00 \cdot 3.36) + (0.10 \cdot 3.54) = 0.41$ $Q(15YR, 20MIN) = API = (0.15)(3.12) = 0.41$	DA-09 OPEN = 0.00 ACRES GRAVEL = 0.00 ACRES PAVEMENT/BUILDING = 0.07 ACRES $PI = (0.00 \cdot 1.70) + (0.00 \cdot 3.36) + (0.07 \cdot 4.20) = 0.294$ $Q(15YR, 20MIN) = API = (0.07)(4.20) = 0.29$
DA-10 OPEN = 0.01 ACRES GRAVEL = 0.00 ACRES PAVEMENT/BUILDING = 0.03 ACRES $PI = (0.01 \cdot 1.70) + (0.00 \cdot 3.36) + (0.03 \cdot 3.54) = 0.108$ $Q(15YR, 20MIN) = API = (0.04)(3.08) = 0.12$	DA-11 OPEN = 0.04 ACRES GRAVEL = 0.00 ACRES PAVEMENT/BUILDING = 0.08 ACRES $PI = (0.04 \cdot 1.70) + (0.00 \cdot 3.36) + (0.08 \cdot 3.54) = 0.244$ $Q(15YR, 20MIN) = API = (0.05)(2.44) = 0.12$
DA-12 OPEN = 0.03 ACRES GRAVEL = 0.00 ACRES PAVEMENT/BUILDING = 0.02 ACRES $PI = (0.03 \cdot 1.70) + (0.00 \cdot 3.36) + (0.02 \cdot 3.54) = 0.12$ $Q(15YR, 20MIN) = API = (0.05)(2.44) = 0.12$	

TOTAL EXISTING DRAINAGE AREA = 5.65 cfs

OWNER/DEVELOPER:
 HV PROPERTY MANAGEMENT, LLC
 14010 MANCHESTER RD.
 MANCHESTER, MO 63011

POST MEADOWS-PLAT THREE
 (PB 35, PG 182)
 LOT 31
 N/F
 ANDREW T & SARA C SWARTZ
 (DB 7065, PG 2168)
 ZONING: HTCD

SOLACE HOSPICE CARE



636-332-4574 (tel.)
 636-327-0760 (fax)
 wenim@cochrancorp.com
 63395
COCHRAN
 North Office
 8 East Main Street
 Wentzville, Missouri 63395



Missouri State Certificate
 of Authority Number: 2010000046
 Cochran Project No. M22-8498



DATE
 Eric S. Kirchner No. E-2001004618
 Registered Professional Engineer
 State of Missouri
 for Cochran Engineering & Surveying

Developer Information
 HV PROPERTY MANAGEMENT, LLC
 14010 MANCHESTER RD, MANCHESTER, MO 63011

Owner Information
 HV PROPERTY MANAGEMENT, LLC
 14010 MANCHESTER RD, MANCHESTER, MO 63011

PROPOSED DRAINAGE AREA MAP

P+Z No. 22-008964
 Approval Date: NOV. 3, 2022

Permit No.

Page No.

C12

CALL OR CLICK 3 DAYS BEFORE YOU DIG!
 MISSOURI
 1-800-DIG-RITE OR 811
 www.motcall.com

City of O'Fallon Standard Notes and Details - June 2010