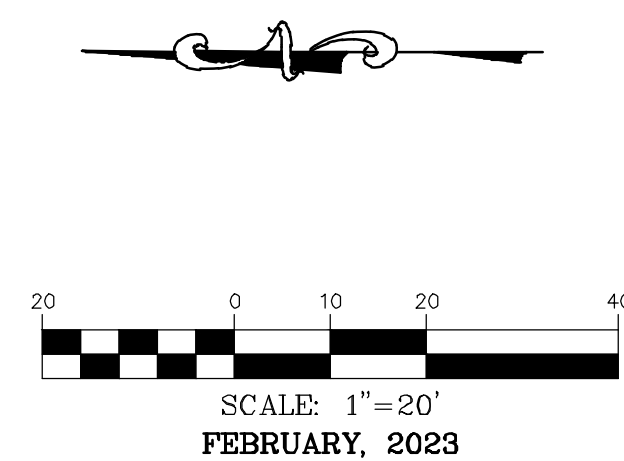
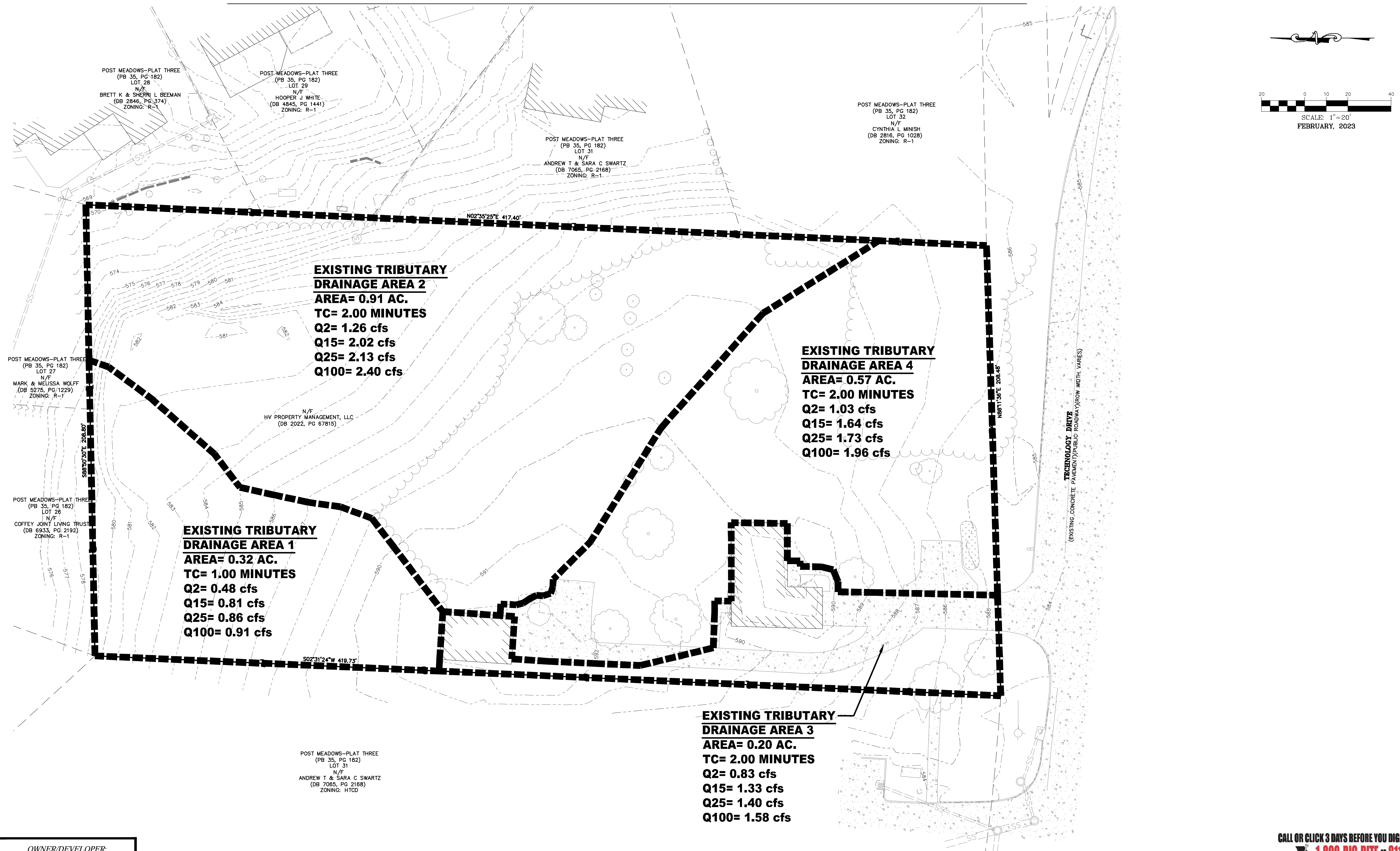


EXISTING TRIBUTARY DRAINAGE AREA MAP



**EXISTING TRIBUTARY
DRAINAGE AREA 2**
AREA= 0.91 AC.
TC= 2.00 MINUTES
Q2= 1.26 cfs
Q15= 2.02 cfs
Q25= 2.13 cfs
Q100= 2.40 cfs

**EXISTING TRIBUTARY
DRAINAGE AREA 4**
AREA= 0.57 AC.
TC= 2.00 MINUTES
Q2= 1.03 cfs
Q15= 1.64 cfs
Q25= 1.73 cfs
Q100= 1.96 cfs

**EXISTING TRIBUTARY
DRAINAGE AREA 1**
AREA= 0.32 AC.
TC= 1.00 MINUTES
Q2= 0.48 cfs
Q15= 0.81 cfs
Q25= 0.86 cfs
Q100= 0.91 cfs

**EXISTING TRIBUTARY
DRAINAGE AREA 3**
AREA= 0.20 AC.
TC= 2.00 MINUTES
Q2= 0.83 cfs
Q15= 1.33 cfs
Q25= 1.40 cfs
Q100= 1.58 cfs

POST MEADOWS-PLAT THREE
(PB 35, PG 182)
LOT 28
N/F
BRETT K & SHERRI L BEEMAN
(DB 2846, PG 374)
ZONING: R-1

POST MEADOWS-PLAT THREE
(PB 35, PG 182)
LOT 29
N/F
HOOPER J WHITE
(DB 4845, PG 1441)
ZONING: R-1

POST MEADOWS-PLAT THREE
(PB 35, PG 182)
LOT 31
N/F
ANDREW T & SARA C SWARTZ
(DB 7065, PG 2168)
ZONING: R-1

POST MEADOWS-PLAT THREE
(PB 35, PG 182)
LOT 32
N/F
CYNTHIA L MINISH
(DB 2816, PG 1028)
ZONING: R-1

POST MEADOWS-PLAT THREE
(PB 35, PG 182)
LOT 27
N/F
MARK & MELISSA WOLFF
(DB 5275, PG 1229)
ZONING: R-1

N/F
HV PROPERTY MANAGEMENT, LLC
(DB 2022, PG 67815)

POST MEADOWS-PLAT THREE
(PB 35, PG 182)
LOT 26
N/F
COFFEY JOINT LIVING TRUST
(DB 6933, PG 2192)
ZONING: R-1

POST MEADOWS-PLAT THREE
(PB 35, PG 182)
LOT 31
N/F
ANDREW T & SARA C SWARTZ
(DB 7065, PG 2168)
ZONING: HTCD

OWNER/DEVELOPER:
 HV PROPERTY MANAGEMENT, LLC
 14010 MANCHESTER RD.
 MANCHESTER, MO 63011

SOLACE HOSPICE CARE



- 636-332-4574 (tel.)
- 636-327-0760 (fax)
- www.solacehospice.com
- Civil Engineering
- Land Surveying
- Architecture
- Site Development
- General Consulting
- Master Planning



Missouri State Certificate
of Authority Number: 2010000046
Cochran Project No. M22-8498



DATE
 Eric S. Kirchner No. E-2001004618
 Registered Professional Engineer
 State of Missouri
 for Cochran Engineering & Surveying

Developer Information
 HV PROPERTY MANAGEMENT, LLC
 14010 MANCHESTER RD, MANCHESTER, MO 63011

Owner Information
 HV PROPERTY MANAGEMENT, LLC
 14010 MANCHESTER RD, MANCHESTER, MO 63011

EXISTING TRIBUTARY DRAINAGE AREA MAP

P+Z No. 22-008964
 Approval Date: NOV. 3, 2022
 Permit No.

Page No.

C13

CALL OR CLICK 3 DAYS BEFORE YOU DIG!
 MISSOURI
 1-800-DIG-RITE OR 811
 www.motcall.com

City of O'Fallon Standard Notes and Details - June 2010