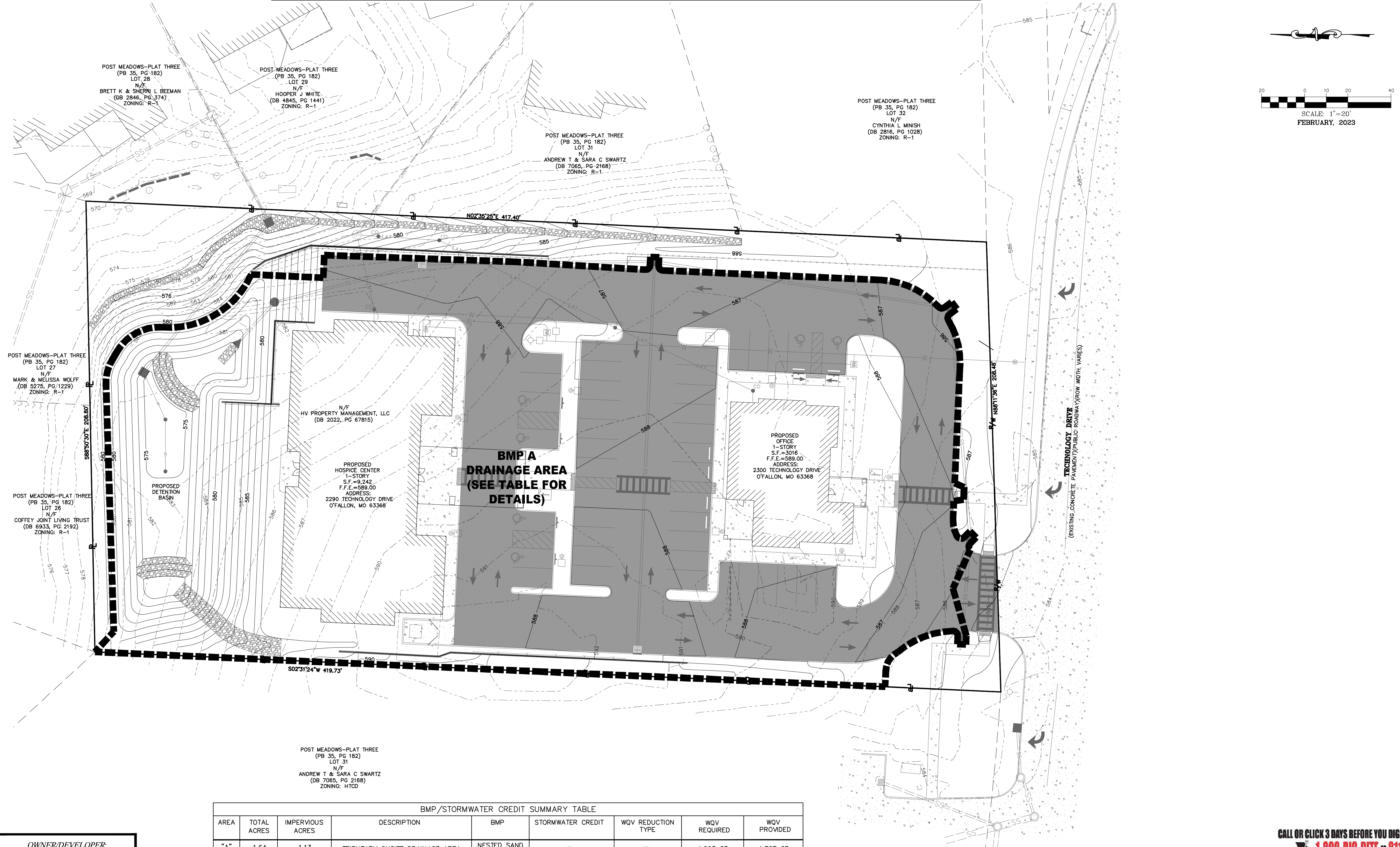


WATER QUALITY DRAINAGE AREA MAP



SCALE: 1"=20'
FEBRUARY, 2023

POST MEADOWS-PLAT THREE
(PB 35, PG 182)
LOT 28
N/F
BRETT K & SHERRI L BEEMAN
(DB 2846, PG 374)
ZONING: R-1

POST MEADOWS-PLAT THREE
(PB 35, PG 182)
LOT 29
N/F
HOOPER J WHITE
(DB 4845, PG 1441)
ZONING: R-1

POST MEADOWS-PLAT THREE
(PB 35, PG 182)
LOT 31
N/F
ANDREW T & SARA C SWARTZ
(DB 7065, PG 2168)
ZONING: R-1

POST MEADOWS-PLAT THREE
(PB 35, PG 182)
LOT 32
N/F
CYNTHIA L MINISH
(DB 2816, PG 1028)
ZONING: R-1

POST MEADOWS-PLAT THREE
(PB 35, PG 182)
LOT 27
N/F
MARK & MELISSA WOLFF
(DB 5275, PG 1229)
ZONING: R-1

POST MEADOWS-PLAT THREE
(PB 35, PG 182)
LOT 26
N/F
COFFEY JOINT LIVING TRUST
(DB 6933, PG 2192)
ZONING: R-1

N/F
HV PROPERTY MANAGEMENT, LLC
(DB 2022, PG 67815)

PROPOSED
HOSPICE CENTER
1-STORY
S.F.=9,242
F.F.E.=589.00
ADDRESS:
2290 TECHNOLOGY DRIVE
O'FALLON, MO 63368

**BMP/A
DRAINAGE AREA
(SEE TABLE FOR
DETAILS)**

PROPOSED
OFFICE
1-STORY
S.F.=3016
F.F.E.=589.00
ADDRESS:
2300 TECHNOLOGY DRIVE
O'FALLON, MO 63368

POST MEADOWS-PLAT THREE
(PB 35, PG 182)
LOT 31
N/F
ANDREW T & SARA C SWARTZ
(DB 7065, PG 2168)
ZONING: HTCD

OWNER/DEVELOPER:
HV PROPERTY MANAGEMENT, LLC
14010 MANCHESTER RD.
MANCHESTER, MO 63011

BMP/STORMWATER CREDIT SUMMARY TABLE								
AREA	TOTAL ACRES	IMPERVIOUS ACRES	DESCRIPTION	BMP	STORMWATER CREDIT	WQV REDUCTION TYPE	WQV REQUIRED	WQV PROVIDED
"A"	1.64	1.13	TRIBUTARY ONSITE DRAINAGE AREA	NESTED SAND FILTER	-	-	4,603 CF	4,707 CF
TOTAL	1.64	1.13					4,603 CF	4,707 CF

SOLACE HOSPICE CARE



636-332-4574 (tel.)
636-327-0760 (fax)
www.solacehospice.com
• Civil Engineering
• Land Surveying
• Architecture
• Site Development
• General Consulting
• Master Planning



Missouri State Certificate
of Authority Number: 2010000046
Cochran Project No. M22-8498



DATE
Eric S. Kirchner No. E-2001004618
Registered Professional Engineer
State of Missouri
for Cochran Engineering & Surveying

Developer Information
HV PROPERTY MANAGEMENT, LLC
14010 MANCHESTER RD, MANCHESTER, MO 63011

Owner Information
HV PROPERTY MANAGEMENT, LLC
14010 MANCHESTER RD, MANCHESTER, MO 63011

WATER QUALITY DRAINAGE AREA MAP

P+Z No. 22-008964
Approval Date: NOV. 3, 2022
Permit No.

Page No.
C15

CALL OR CLICK 3 DAYS BEFORE YOU DIG!
MISSOURI ONECALL SYSTEM
1-800-DIG-RITE OR 811
www.motcall.com

City of O'Fallon Standard Notes and Details - June 2010