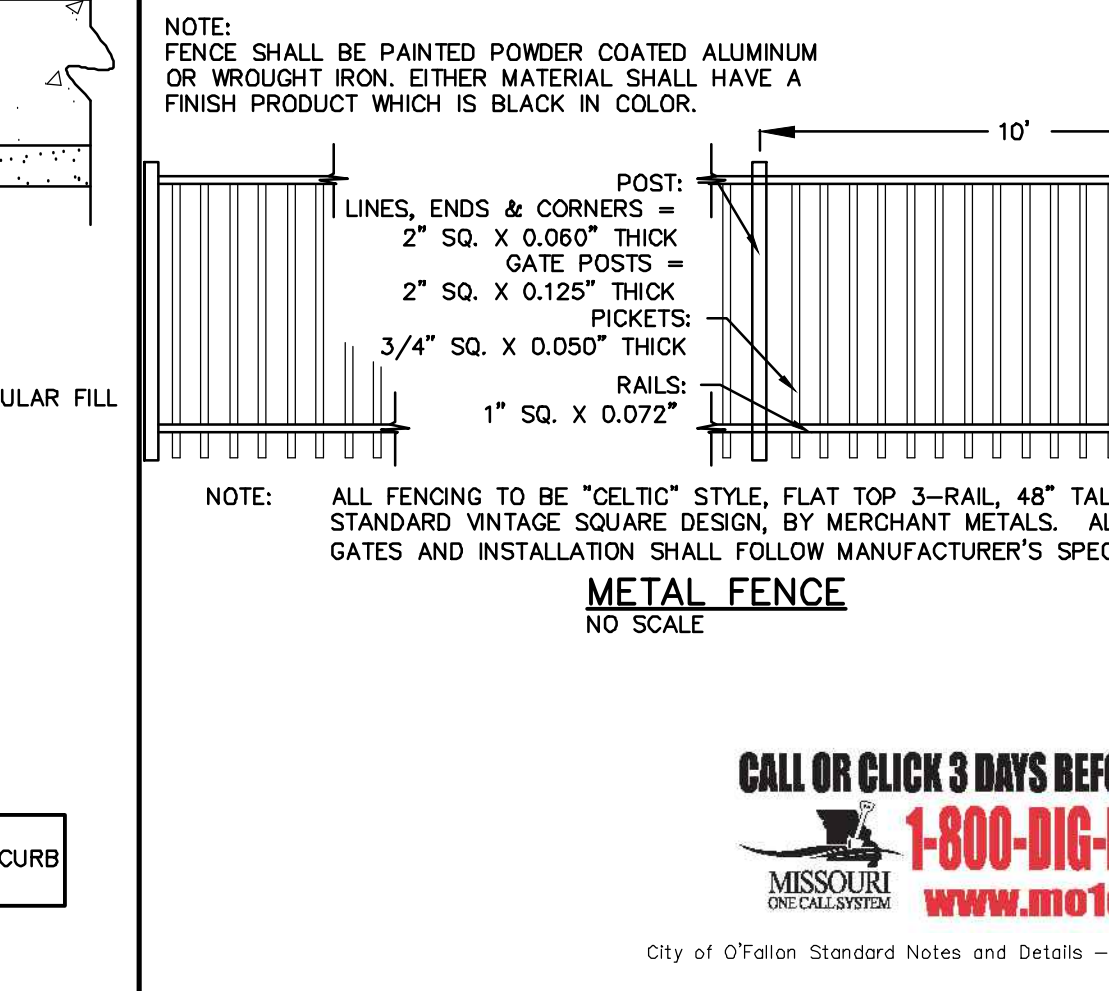
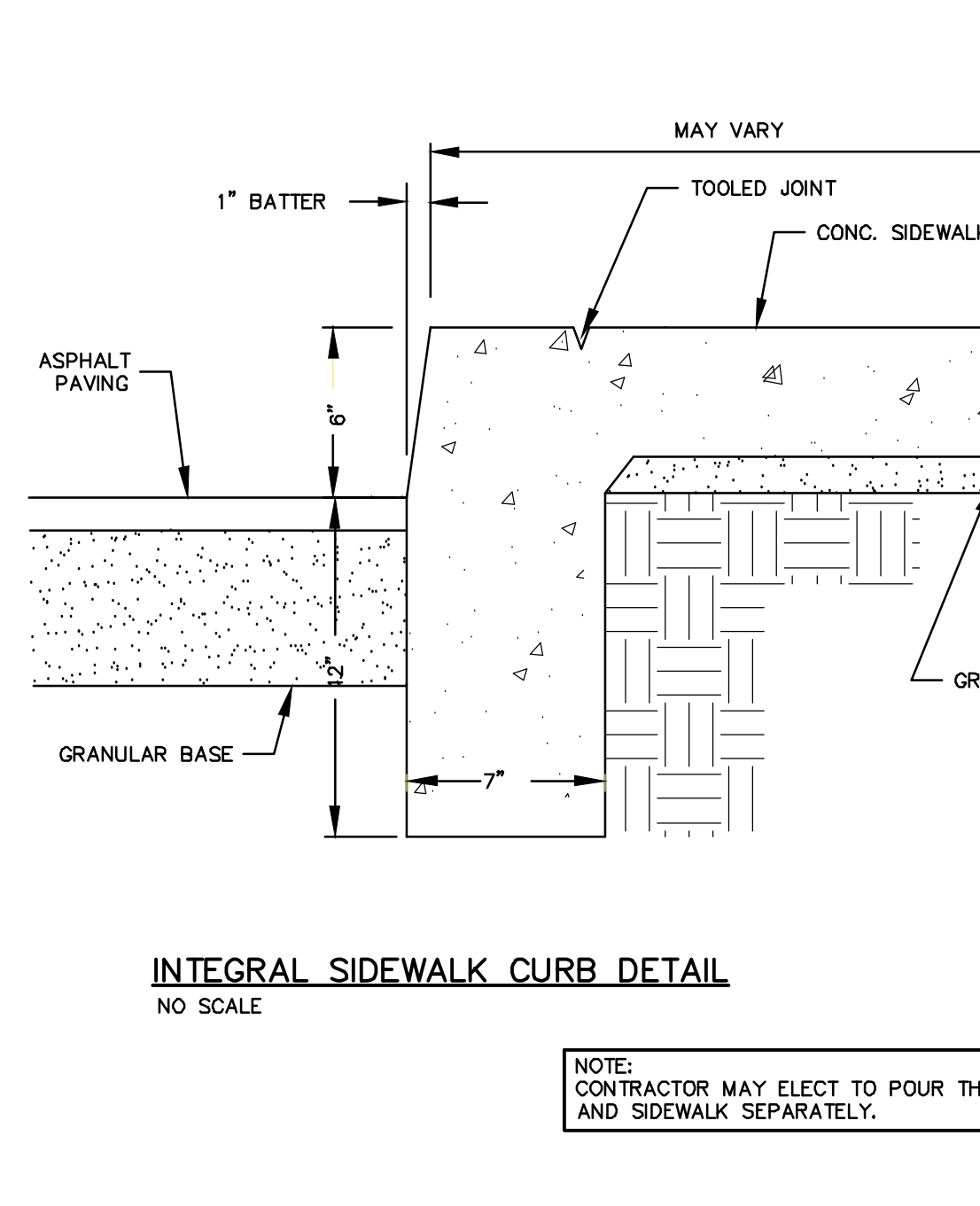
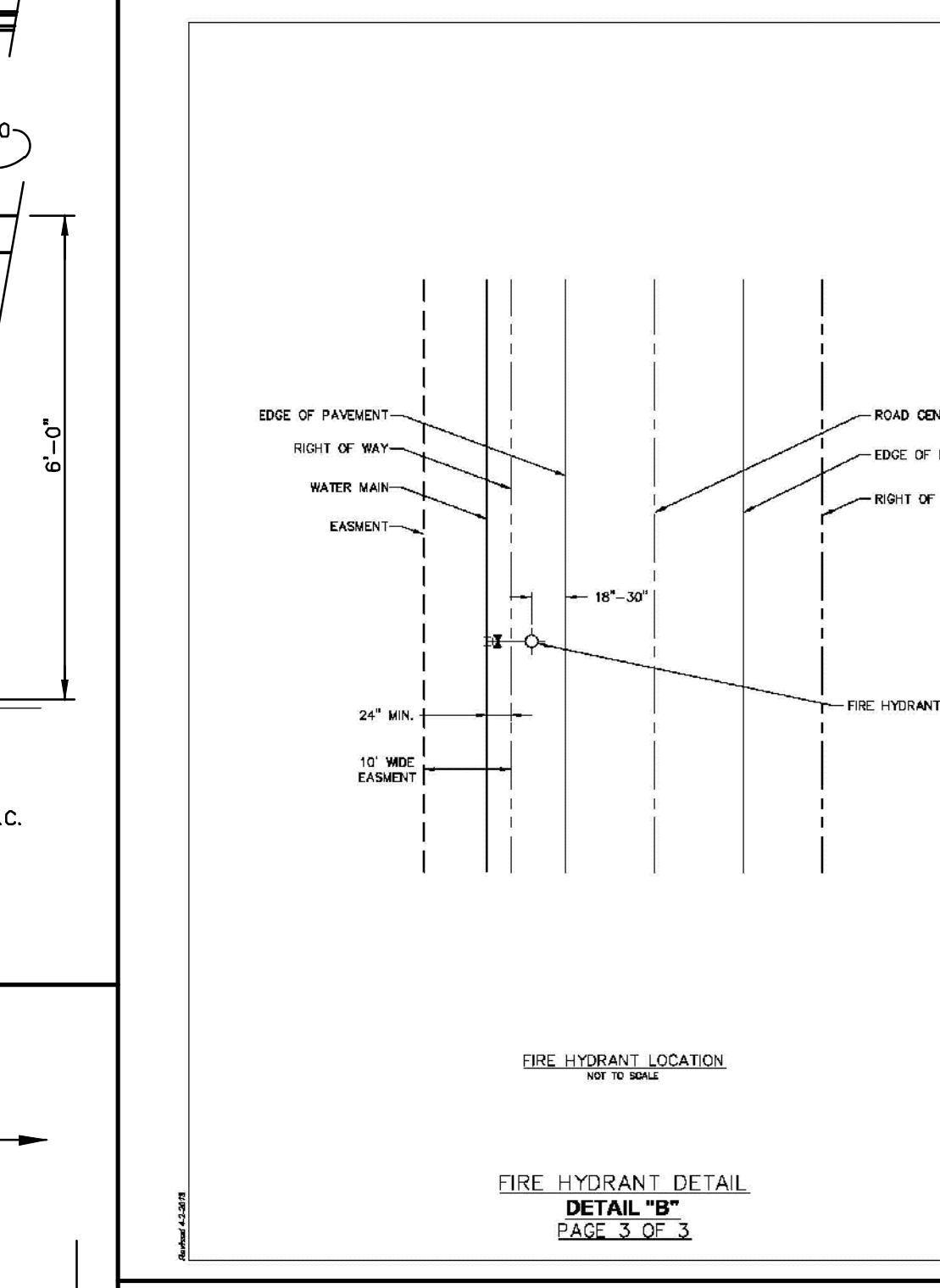
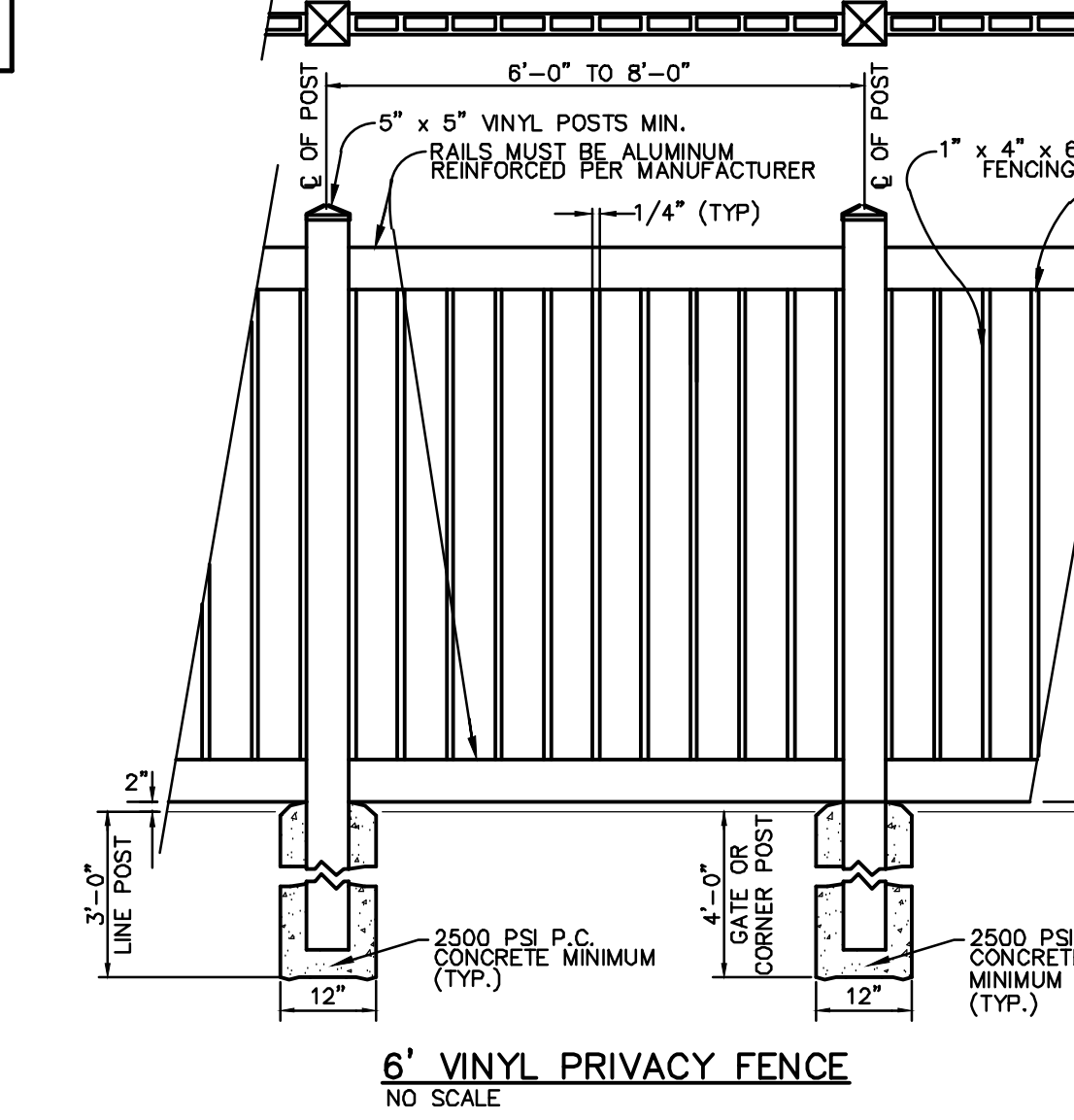
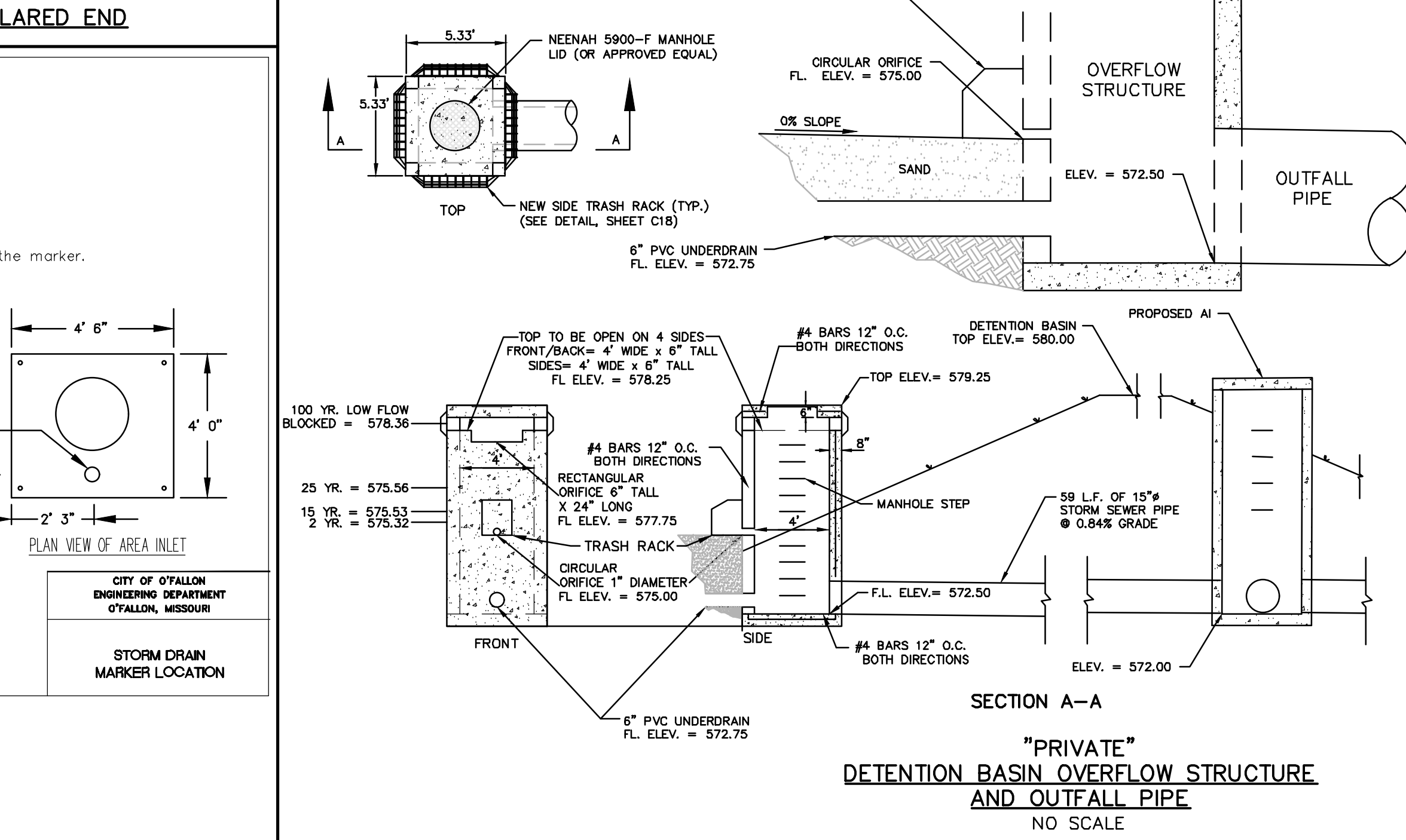
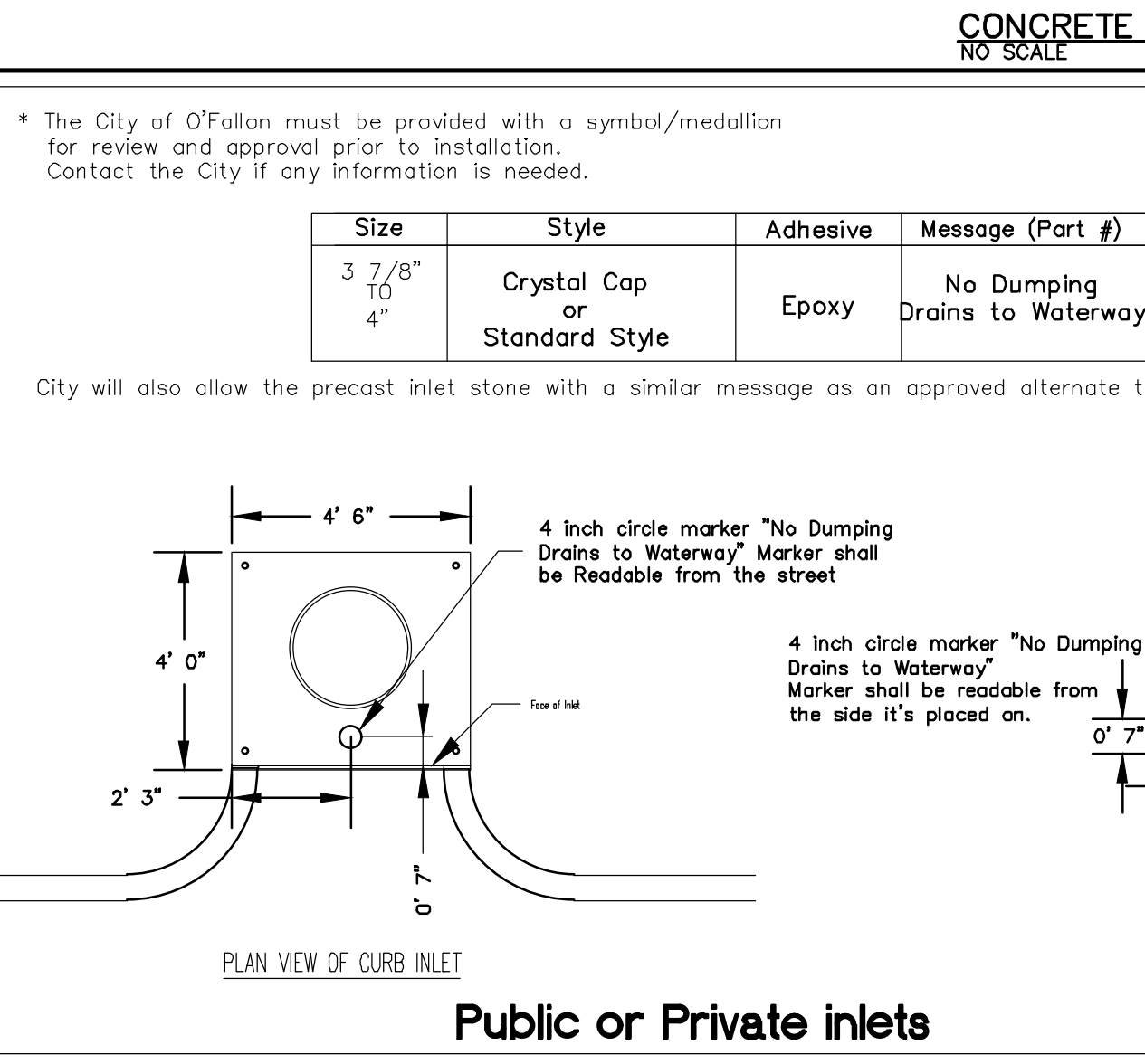


ADJOINING PIPE DIA.	BARREL SECTION REINFORCEMENT		FLARE SECTION REINFORCEMENT (ONE LAYER ONLY)	
	CIRCULAR	ELLIPITICAL	LONGITUDINAL	TRANSVERSE
	INNER CAGE SQ. IN./LIN. FT.	OUTER CAGE SQ. IN./LIN. FT.	SQ. IN./LIN. FT.	SQ. IN./LIN. FT.
12"	0.07		0.048	0.054
18"	0.07		0.060	0.066
21"	0.07		0.066	0.072
24"	0.07		0.072	0.078
27"	0.13		0.11	0.117
30"	0.14		0.12	0.126
33"	0.15		0.13	0.135
36"	0.17	0.09	0.13	0.135
42"	0.15	0.12	0.17	0.168
48"	0.18	0.14	0.20	0.170
54"	0.22	0.16	0.24	0.185
60"	0.25	0.19	0.28	0.195
66"	0.31	0.23	0.34	0.205
72"	0.35	0.27	0.39	0.215
78"	0.40	0.31	0.44	0.225
84"	0.46	0.38	0.51	0.235

DIA.	WALL	DIMENSIONS				
		A	B	C	D	E
12"	2"	4"	4"-0"	6"	2"-0"	36"
15"	2-1/4"	6"	3"-10"	6"	2"-0"	36"
18"	2-1/2"	6"	3"-10"	6"	3"-0"	36"
21"	2-3/4"	6"	3"-2"	6"	3"-0"	36"
24"	3"	9-1/2"	2"-6"	6"	4"-0"	36"
27"	3-1/4"	10-1/2"	2"-1"	6"	4"-0"	36"
30"	3-1/2"	1'-0"	1'-7"	6"	5"-0"	36"
33"	3-3/4"	1'-2"	1'-7"	6"	5"-0"	36"
36"	4"	1'-3"	2'-10"	6"	5"-0"	36"
42"	4-1/2"	1'-9"	2'-11"	6"	6"-0"	36"
48"	5"	2'-0"	2'-2"	6"	7"-0"	36"
54"	5-1/2"	2'-3"	2'-11"	6"	7"-0"	36"
60"	6"	2'-3"	3'-3"	6"	8"-0"	36"
66"	6-1/2"	2'-0"	1'-9"	6"	8"-0"	36"
72"	7"	2'-0"	2'-9"	10"	9"-0"	36"
78"	7-1/2"	2'-3"	2'-3"	10"	9"-0"	36"
84"	8"	2'-6"	2'-0"	10"	10'-0"	36"

GENERAL NOTES:
 1. SLIGHT VARIATIONS IN BOTH SHAPE AND DIMENSIONS FROM THOSE SHOWN MAY BE ACCEPTED IF APPROVED BY THE ENGINEER.
 2. NOT MORE THAN THREE LIFT HOLES MAY BE DRILLED OR CAST IN THE END SECTION FOR HANDLING ANY LAYING.
 3. LIFT LUGS OR BARS WILL BE PERMITTED IN PRECAST TOE WALLS.
 4. TOE WALLS MAY BE CAST-IN-PLACE OR PRECAST.



OWNER/DEVELOPER:
 HV PROPERTY MANAGEMENT, LLC
 14010 MANCHESTER RD.
 MANCHESTER, MO 63011

"PRIVATE"
 DETENTION BASIN OVERFLOW STRUCTURE
 AND OUTFALL PIPE
 NO SCALE

NOTE:
 CONTRACTOR MAY ELECT TO POUR THE CURB AND SIDEWALK SEPARATELY.

NOTE:
 ALL FENCING TO BE "CELTIC" STYLE, FLAT TOP 3-RAIL, 48" TALL, STANDARD VINTAGE SQUARE DESIGN, BY MERCHANT METALS. ALL FENCING, GATES AND INSTALLATION SHALL FOLLOW MANUFACTURER'S SPECIFICATIONS.

SOLACE HOSPICE CARE

636-332-4574 (tel.)
 636-327-0760 (fax)
 venim@cochrancare.com

COCHRAN
 North Office
 8 East Main Street
 Wentzville, Missouri 63395

• Civil Engineering
 • Land Surveying
 • Architecture
 • Site Development
 • General Consulting
 • Master Planning

Missouri State Certificate of Authority Number: 2010000468
 Cochran Project No. M22-8498

ERIC SCOTT KIRCHNER
 E-2001004618
 PROFESSIONAL ENGINEER

DATE

Eric S. Kirchner No. E-2001004618
 Registered Professional Engineer
 State of Missouri
 for Cochran Engineering & Surveying

Developer Information
 HV PROPERTY MANAGEMENT, LLC
 14010 MANCHESTER RD., MANCHESTER, MO 63011

Owner Information
 HV PROPERTY MANAGEMENT, LLC
 14010 MANCHESTER RD., MANCHESTER, MO 63011

DETAILS

P+Z No. 22-008964
 Approval Date: NOV. 3, 2022
 Permit No.

Page No.

C17

CALL OR CLICK 3 DAYS BEFORE YOU DIG!
 MISSOURI
 1-800-DIG-RITE OR 811
 www.motcall.com

City of O'Fallon Standard Notes and Details - June 2010