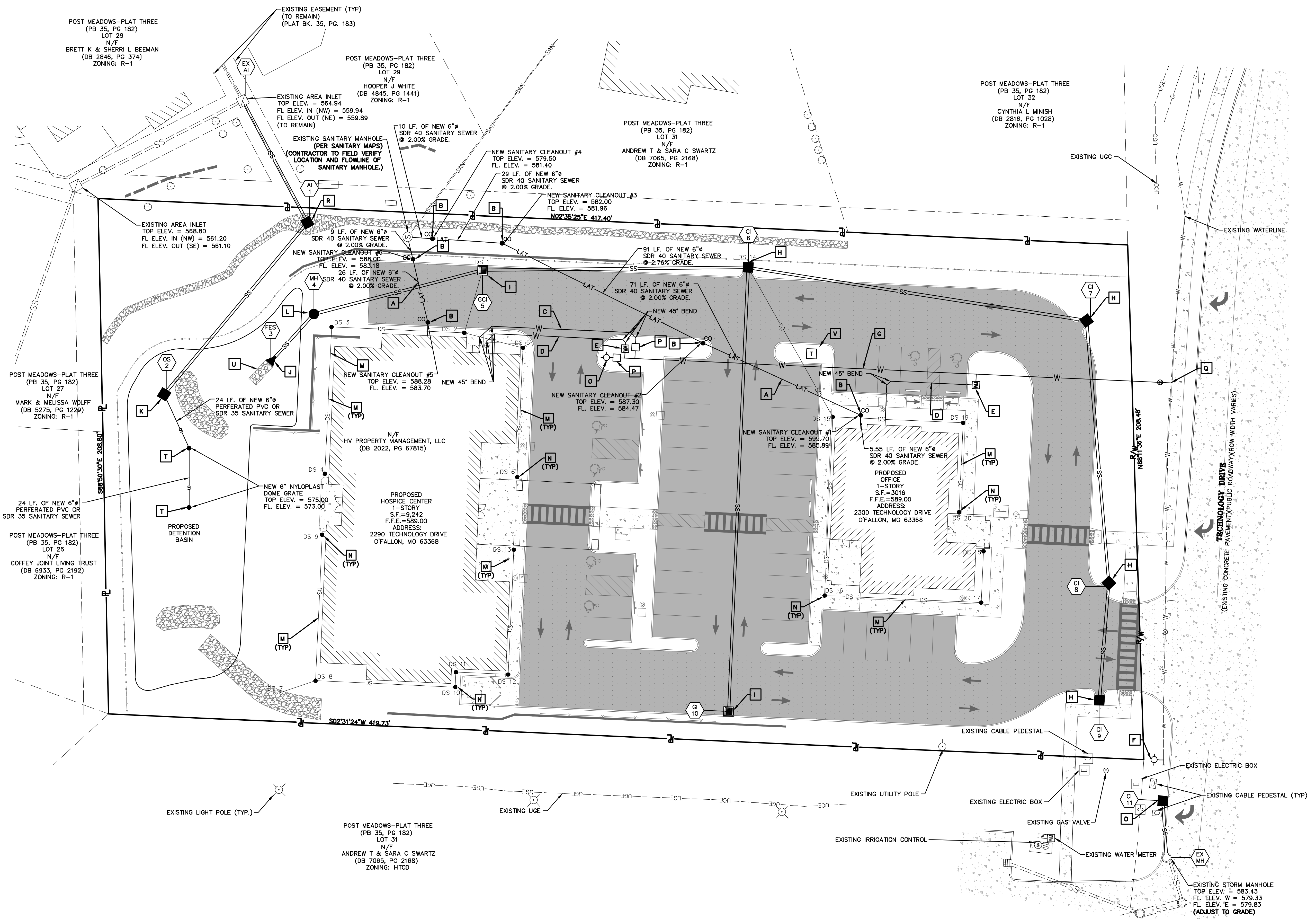
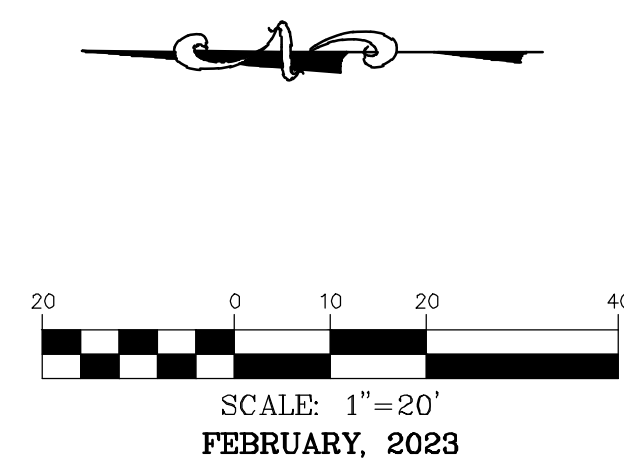


UTILITY PLAN



UTILITY LEGEND

- A NEW 6" SCH 40 PVC SANITARY LATERAL. SEE DETAIL SHEET C16.
- B NEW SANITARY CLEAN-OUT. SEE DETAIL SHEET C18.
- C NEW 6" C900 PVC FIRE SUPPLY. (PRIVATE)
- D NEW 1" WATER SERVICE LINE. PER PWS NO. 2 REQUIREMENTS.
- E NEW 1" WATER METER. SEE DETAIL SHEET C17.
- F RELOCATED FIRE HYDRANT. TO BE REPAINTED CHROME YELLOW.
- G NEW 6" C900 PVC WATER MAIN. (PRIVATE)
- H NEW CURB INLET. SEE DETAIL SHEET C16.
- I NEW GRATED INLET WITH SIDE INTAKE. SEE DETAIL SHEET C16.
- J NEW FLARED END SECTION. SEE DETAIL SHEET C17.
- K NEW OUTFALL STRUCTURE. SEE DETAIL SHEET C17.
- L NEW STORM MANHOLE. SEE DETAIL SHEET C16.
- M NEW 6" SDR 35 PVC DOWNSPOUT COLLECTOR. SEE DETAIL SHEET C16.
- N NEW DOWNSPOUT CLEAN-OUT. SEE DETAIL SHEET C16.
- O NEW FIRE HYDRANT. SEE DETAIL SHEET C17 (PRIVATE, PAINT RED)
- P NEW DETECTOR CHECK. SEE DETAIL SHEET C17.
- Q CONNECT TO EXISTING WATER MAIN. SEE DETAIL "A", SHEET C16.
- R NEW AREA INLET. SEE DETAIL SHEET C16.
- S NEW TYPE T INLET. SEE DETAIL SHEET C18.
- T NEW 6" NYLOPLAST DOME GRATE. SEE DETAIL SHEET C18.
- U NEW 12" THICK X 4' WIDE X 10' LONG RIP RAP FOR FLARED END. SEE DETAIL SHEET C18.
- V NEW TRANSFORMER PAD, CONTRACTOR SHALL COORDINATE WITH MEP AND UTILITY PROVIDER.

DOWNSPOUT COLLECTOR FLOWLINE TABLE	
DS1	FL ELEV. = 53.74
DS2	FL ELEV. = 584.23
DS3	FL ELEV. = 585.31
DS4	FL ELEV. = 586.50
DS5	FL ELEV. = 585.45
DS6	FL ELEV. = 586.50
DS7	FL ELEV. = 583.00
DS8	FL ELEV. = 583.82
DS9	FL ELEV. = 586.50
DS10	FL ELEV. = 584.95
DS11	FL ELEV. = 585.07
DS12	FL ELEV. = 585.49
DS13	FL ELEV. = 586.50
DS14	FL ELEV. = 582.02
DS15	FL ELEV. = 583.36
DS16	FL ELEV. = 584.81
DS17	FL ELEV. = 586.08
DS18	FL ELEV. = 586.50
DS19	FL ELEV. = 585.77
DS20	FL ELEV. = 586.50

- NOTE: ANY NEW CONNECTION TO THE EXISTING PUBLIC WATER MAIN SHALL BE MADE PER PWS 2 SPECIFICATIONS.
- NOTE: FIRE HYDRANT TO BE PRIVATE AND IS REQUIRED TO BE PAINTED CHROME RED PER THE WATER DISTRICT SPECIFICATIONS.
- NOTE: THE PUBLIC FIRE HYDRANT IS REQUIRED TO BE TESTED AND THEN DEDICATED TO THE WATER DISTRICT BY WAY OF BILL OF SALE BEFORE IT IS ALLOWED TO BE PUT INTO SERVICE.
- NOTE: THE NORTHERN PROPERTY OWNERS WHERE THE OFFSITE STORM SEWER IS BEING ADDED SHALL BE NOTIFIED IN WRITING AT LEAST 24 HOURS IN ADVANCE OF ANY OFFSITE SEWER WORK. THE CONTRACTOR IS TO PROVIDE TEMPORARY FENCING AS NEEDED (FOR PET CONTAINMENT AND/OR SAFETY FENCING) AT THIS LOCATION DURING CONSTRUCTION OF THE STORM SEWERS.
- NOTE: EXISTING STORM STRUCTURES TO BE CONNECTED TO ARE SUBJECT TO AN INSPECTION REVIEW AND MAY NEED TO BE REPLACED AT THE DIRECTION OF THE CITY'S CONSTRUCTION INSPECTOR IF IT IS DETERMINED TO BE STRUCTURALLY DEFICIENT ONCE EXCAVATED AND/OR PREPARED FOR PIPE CONNECTION.

SOLACE HOSPICE CARE

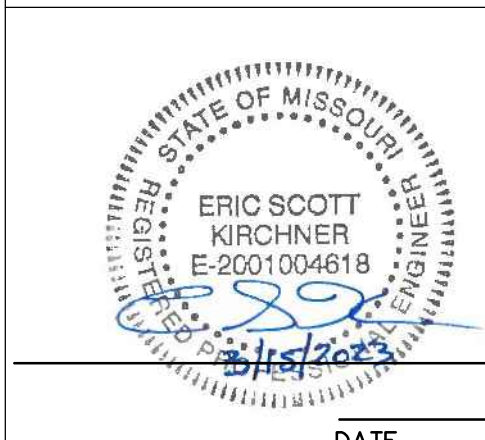
636-332-4574 (tel.)
636-327-0760 (fax)
636-327-0760 (cell)
www.solacehospice.com

• Civil Engineering
• Land Surveying
• Architecture
• Site Development
• General Consulting
• Master Planning

COCHRAN

North Office
8 East Main Street
Wentzville, Missouri 63395

Missouri State Certificate of Authority Number: 2010000046
Cochran Project No. M22-8498



DATE
Eric S. Kirchner No. E-2001004618
Registered Professional Engineer
State of Missouri
for Cochran Engineering & Surveying

Developer Information
HV PROPERTY MANAGEMENT, LLC
14010 MANCHESTER RD, MANCHESTER, MO 63011

Owner Information
HV PROPERTY MANAGEMENT, LLC
14010 MANCHESTER RD, MANCHESTER, MO 63011

P+S Z No. 22-008964
Approval Date: NOV. 3, 2022
Permit No.

Page No.
C5

OWNER/DEVELOPER:
HV PROPERTY MANAGEMENT, LLC
14010 MANCHESTER RD.
MANCHESTER, MO 63011

CALL OR CLICK 3 DAYS BEFORE YOU DIG!
1-800-DIG-RITE OR 811
www.motcall.com