

GENERAL NOTES

- 1. Driveway locations shall not interfere with the sidewalk handicap ramps, or curb inlet sumps
2. Sidewalks, curb ramps, ramps and accessible parking spaces shall be constructed in accordance with the current approved "American with Disabilities Act Accessibility Guidelines" (ADAAG) along with the required grades, construction materials, specifications and signage.
2.1. Truncated domes for curb ramps located in public right of way shall meet PROWAG requirements and shall be constructed using red pre-cast truncated domes per pavement details.
3. Any proposed pavilions or playground areas will need a separate permit from the Building Division.
4. The Contractor is responsible to call Missouri One Call and The City of O'Fallon for the location of utilities.
5. All proposed utilities and/or utility relocations shall be located underground.
6. All proposed fencing requires a separate permit through the Building Safety Division.
7. All construction operations and work zone traffic control within the right of way will follow MoDOT or M.U.T.C.D. standards whichever is more stringent.
8. (INTENTIONALLY OMITTED)
9. All subdivision identification or directional sign(s) must have the locations and sizes approved and permitted separately through the Planning and Development Division.
10. Materials such as trees, organic debris, rubble, foundations, and other deleterious material shall be removed from the site and disposed of in compliance with all applicable laws and regulations.
11. Twenty-four (24) hours prior to starting any of the work covered by the above plans and after approval thereof, the developer shall make arrangements with the Construction Inspection Office to provide for inspection of the work, sufficient in the opinion of the City Engineer, to assure compliance with the plans and specifications as approved.
12. The City Engineer or their duly authorized representative shall make all necessary inspections of City infrastructure, escrow items or infrastructure located on the approved plans.
13. All installations and construction shall conform to the approved engineering drawings.
14. City approval of the construction site plans does not mean that any building can be constructed on the lots without meeting the building setbacks as required by the zoning code.

GRADING NOTES

- 1. Developer must supply City Construction Inspectors with an Engineer's soil reports prior to and during site grading.
1.1. Maximum dry density
1.2. Optimum moisture content
1.3. Maximum and minimum allowable moisture content
1.4. Curve must be plotted to show density from a minimum of 90% Compaction and above as determined by the "Modified AASHTO T-180 Compaction Test"
1.5. Curve must have at least 5 density points with moisture content and sample locations listed on document
1.6. Specific gravity
1.7. Natural moisture content
1.8. Liquid limit
1.9. Plastic limit
2. All fill placed in areas other than proposed storm sewers, sanitary sewers, proposed roads, and paved areas shall be compacted from the bottom of the fill up in 8" lifts and compacted to 90% maximum density as determined by Modified AASHTO T-180 compaction test or 95% of maximum density as determined by the Standard Proctor Test AASHTO T-99.
3. The surface of the fill shall be finished so it will not impound water.
4. All sediment and detention basins are to be constructed during the initial phase of the grading operation or in accordance with the approved SWPPP.
5. When grading operations are complete or suspended for more than 14 days, permanent grass must be established at sufficient density to provide erosion control on site.
6. No slopes shall exceed 3 (horizontal): 1 (vertical) unless otherwise approved by the soils report and specifically located on the plans and approved by the City Engineer.
7. All low places whether on site or off shall be graded to provide drainage with temporary ditches.
8. Any existing wells and/or springs which may exist on the property must be sealed in a manner acceptable to the City of O'Fallon Construction Inspection Department and following Missouri Department of Natural Resources standards and specifications.
9. (INTENTIONALLY OMITTED)
10. All trench back fills under paved areas shall be granular back fill, and compacted mechanically.
10.1. Depth, Trench back fills less than 8 feet deep shall be probed to a depth extending half the depth of the trench back fill, but not less than 3 feet.
10.2. Equipment, The jetting probe shall be a metal pipe with an interior diameter of 1.5 to 2 inches.
10.3. Method, Jetting shall be performed from the lowest surface topographic point and proceeded toward the highest point, and from the bottom of the trench back fill toward the surface.
10.4. Surface Bridging, The contractor shall identify the locations of the surface bridging (the tendency for the upper surface to crust and arch over the trench rather than collapse and consolidate during the jetting process).
11. Site grading
11.1. Within City right-of-way. Material is to be placed in eight (8) inch to twelve (12) inch loose lifts and compacted per the approved compaction requirements.
11.2. Outside of City right-of-way. Material is to be placed in eight (8) inch to twelve (12) inch loose lifts and compacted per the approved compaction requirements.
12. Access to the site from any other location other than the proposed construction entrance is strictly prohibited!

EROSION CONTROL NOTES

- 1. The Permittee shall assume complete responsibility for controlling all siltation and erosion of the project area.
2. All erosion control systems are to be inspected and corrected weekly, especially within 48 hours of any rain storm resulting in one-quarter inch of rain or more.
3. Erosion control devices (silt fence, sediment basin, etc.) shall be in accordance with Missouri Department of Natural Resources Protecting Water Quality - a field guide to erosion, sediment and stormwater best management practices for development sites in Missouri and Kansas.
4. This development is required to provide long term post construction BMP's such as; low impact design, source control and treatment controls that protects water quality and controls run off to maximum extent practical in compliance with Phase II Illicit Storm Water Discharge Guidelines.
5. Graded areas shall be seeded and mulched (strawed) within 14 days of stopping land disturbance activities.
6. Graded areas shall be seeded and mulched (strawed) within 14 days of stopping land disturbance activities.
7. The vegetative growth established shall be sufficient to prevent erosion and the standard shall be as required by EPA and DNR, (70% coverage per square foot) Ord. 6496, Section 405.095

STORM SEWER NOTES

- 1. All Storm Sewer installation is to be in accordance with M.S.D. standards and specifications except as modified by the City of O'Fallon ordinances.
2. Brick shall not be used in the construction of storm sewer structures.
3. A 5/8" trash bar shall be installed horizontally in the center of the opening(s) in all curb inlets and area inlets.
4. (INTENTIONALLY OMITTED)
5. Encase with concrete both sanitary and storm sewer at crossing when storm sewer is within 18 inches above sanitary sewer.
6. The storm sewers should run diagonally through the side yards to minimize any additional utility easements required.
7. All concrete pipes will be installed with O-ring rubber type gaskets.
8. Connections at all storm structures are to be made with A-lock joint or equal.
9. Pre cast concrete inlet covers are not to be used.
10. The swale in the detention basins shall have a minimum 2% longitudinal slope and be lined with a permanent erosion control blanket that will allow infiltration of storm water.
11. All structures and flared end sections must be concrete.
12. (INTENTIONALLY OMITTED)
13. Rip rap shown at flared end sections will be evaluated in the field by the Engineer, Contractor, and City Inspectors after installation for effectiveness and field modified, if necessary to reduce erosion on and off site.
14. Add 1" minus rock back fill to all storm sewer that lie within the 1:1 shear plane of the road.
15. (INTENTIONALLY OMITTED)
16. All reinforced concrete pipe (RCP) in St. Charles County right-of-way shall be minimum Class III. Corrugated metal pipe shall be a minimum of 14 gauge.

WATER NOTES

- 1. Fire hydrants shall be a maximum of 600' apart.
2. Coordinate with the water company on the location of water meters.
3. All water main must have a minimum of 42" of cover.
4. Provide water valves to isolate the system.
5. All water mains shall be class 200 SDR 21 or equal with locator/tracer wires
6. If the excavations are made in the improved portion of the right-of-way, twelve inches of granular backfill will be placed over exposed facilities and controlled low strength material (CLSM) aka flowable fill will fill the hole with eight inches of the finished surface for concrete pavement.
7. DISINFECTING: Disinfecting shall be accomplished by placing sufficient hypo chlorite granule (HTH) in each section of pipe to achieve a chlorine residual in the pipeline, upon initial filling, of 50 mg/L (PPM).
8. PRESSURE TESTING: Immediately following disinfection, the piping shall be pumped to a pressure (at the HIGHEST point in the project) of 150 psi or higher where the working pressure is higher than 150 PSI as determined by the City.
9. All tops for valves, meters, and manholes are to be constructed to within 1 inch (0.08") of finish grade.
10. BACTERIOLOGICAL TESTING: After satisfactory disinfection and pressure testing, a sample shall be taken by the contractor in the presence of a City representative and submitted to a laboratory approved by the Missouri Department of Natural Resources and the City for bacteriological analysis.
11. Multi-use trail (when required) Shall have a minimum of 3" Type "C" Asphalt over 4" aggregate base per City requirements.
12. Type C (BP-1) Compaction requirements shall be 98% minimum density according to St. Louis Co. Standard Specifications.
13. Provide pavement striping at any point where the multi-use trail crosses existing or proposed pavement.
14. All street stub-outs over 250' in length will require a temporary turnaround.
15. All sub grade in cut or fill will need to conform to the City of O'Fallon Compaction requirements
16. Material Testing And Frequency. Materials for construction shall be tested and inspected per the appropriate ASTM code or at the City Engineer's discretion.
17. Approval Of Sub grade And Base (Sub base). The City Engineer or representative shall approve the sub grade before any base is placed thereon and shall approve the base before concrete or surface course is placed.
18. In all fill areas in the roadways, soil tests shall be submitted and approved by the City Engineer for each foot of fill and at least one (1) test and an average of one (1) test within every two hundred fifty (250) feet.
19. No traffic will be allowed on new concrete pavement until it has cured for seven (7) days and it reaches three thousand five hundred (3,500) psi within 28 days.
20. Concrete pavements shall not be approved unless it reaches a strength of four thousand (4,000) psi.
21. Prior to placement of aggregate base material on sub grade and prior to placement of pavement on base material, the sub grade and base must be proof-rolled with a fully loaded (ten (10) ton load) tandem truck or equivalent tire vehicle with one (1) pass down each driving lane no faster than three (3) miles per hour.
22. Sub grade and base beneath pavements shall be compacted to St. Louis County Highway Department specifications.
23. The entire width and length will conform to line, grade and cross section shown on the plans or as established by the engineer.
24. Utility Work Prior To Base Construction. No base course work may proceed on any street until all utility excavations (storm and sanitary sewers, water, gas, electric, etc.) have been properly back filled with granular material, crushed stone or gravel mechanically tamped in ten (10) inch lifts.
25. Equipment calibration. The developer's contractors and subcontractors must have their equipment calibrated by the following minimum standards.
26. Air meter--weekly.
27. Cylinder compression--annually by independent calibration service.
28. Batch scales--monthly.
29. Nuclear testing devices--every six (6) months.
30. Proctor equipment--every six (6) months.
31. Slump cone--monthly.
32. All permanent traffic control will be per M.U.T.C.D. or MoDot standards.
33. All traffic signals, street signs, sign post, backs and bracket arms shall be painted black using Carbolite Rust Bond Penetrating Sealer SG and Carbolite 133 HB paint (or equivalent as approved by City of O'Fallon and MoDOT)
34. If the excavations are made in the improved portion of the right-of-way, twelve inches of granular backfill will be placed over exposed facilities and controlled low strength material (CLSM) aka flowable fill will fill the hole with eight inches of the finished surface for concrete pavement.
35. All paving on Sommers road right-of-way shall conform to St. Charles County Standard Specifications.
36. 7 inches thick unreinforced concrete with 4 inches type 5 aggregate base on prepared subgrade.

ROADWAY NOTES

- 1. All paving (public and private) to be in accordance with St. Louis County Standards and Specifications except as modified by the City of O'Fallon ordinances and as noted for the Sommers Road right-of-way in note 21 of this section.
2. If the intersecting road does not have a curb, then the curb on the new entrance shall begin 10' from the edge of the existing road.
3. Provide 6" of concrete over 5" of aggregate base rock or asphalt equivalent for minor residential streets per City Code 405.370.
3.1. Rock to meet the all the requirements of MoDOT type 5 rock with a lighter restriction on the fines being that no more than ten percent (10%) fines shall pass a no. 200 sieve.
4. Multi-use trail (when required) Shall have a minimum of 3" Type "C" Asphalt over 4" aggregate base per City requirements.
5. Type C (BP-1) Compaction requirements shall be 98% minimum density according to St. Louis Co. Standard Specifications.
6. Provide pavement striping at any point where the multi-use trail crosses existing or proposed pavement.
7. All street stub-outs over 250' in length will require a temporary turnaround.
8. All sub grade in cut or fill will need to conform to the City of O'Fallon Compaction requirements
9. Material Testing And Frequency. Materials for construction shall be tested and inspected per the appropriate ASTM code or at the City Engineer's discretion.
10. Approval Of Sub grade And Base (Sub base). The City Engineer or representative shall approve the sub grade before any base is placed thereon and shall approve the base before concrete or surface course is placed.
11. In all fill areas in the roadways, soil tests shall be submitted and approved by the City Engineer for each foot of fill and at least one (1) test and an average of one (1) test within every two hundred fifty (250) feet.
12. No traffic will be allowed on new concrete pavement until it has cured for seven (7) days and it reaches three thousand five hundred (3,500) psi within 28 days.
13. Concrete pavements shall not be approved unless it reaches a strength of four thousand (4,000) psi.
14. Prior to placement of aggregate base material on sub grade and prior to placement of pavement on base material, the sub grade and base must be proof-rolled with a fully loaded (ten (10) ton load) tandem truck or equivalent tire vehicle with one (1) pass down each driving lane no faster than three (3) miles per hour.
15. Sub grade and base beneath pavements shall be compacted to St. Louis County Highway Department specifications.
16. The entire width and length will conform to line, grade and cross section shown on the plans or as established by the engineer.
17. Additional rolling or methods to verify compaction shall be at the discretion of the City Engineer.
18. Tolerance allowed on all lines, grades and cross sections shall be plus or minus four-hundredths (+0.04) feet.
19. Utility Work Prior To Base Construction. No base course work may proceed on any street until all utility excavations (storm and sanitary sewers, water, gas, electric, etc.) have been properly back filled with granular material, crushed stone or gravel mechanically tamped in ten (10) inch lifts.
20. Equipment calibration. The developer's contractors and subcontractors must have their equipment calibrated by the following minimum standards.
21. Air meter--weekly.
22. Cylinder compression--annually by independent calibration service.
23. Batch scales--monthly.
24. Nuclear testing devices--every six (6) months.
25. Proctor equipment--every six (6) months.
26. Slump cone--monthly.
27. All permanent traffic control will be per M.U.T.C.D. or MoDot standards.
28. All traffic signals, street signs, sign post, backs and bracket arms shall be painted black using Carbolite Rust Bond Penetrating Sealer SG and Carbolite 133 HB paint (or equivalent as approved by City of O'Fallon and MoDOT)
29. If the excavations are made in the improved portion of the right-of-way, twelve inches of granular backfill will be placed over exposed facilities and controlled low strength material (CLSM) aka flowable fill will fill the hole with eight inches of the finished surface for concrete pavement.
30. All paving on Sommers road right-of-way shall conform to St. Charles County Standard Specifications.
31. Concrete pavement for Sommers Road widening shall be minimum 7 inches thick unreinforced concrete with 4 inches type 5 aggregate base on prepared subgrade.

DUCKETT CREEK SANITARY DISTRICT CONSTRUCTION NOTES

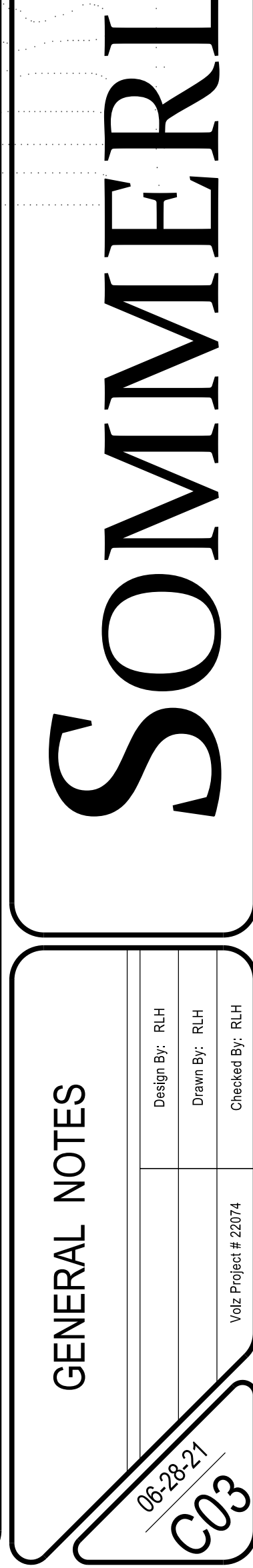
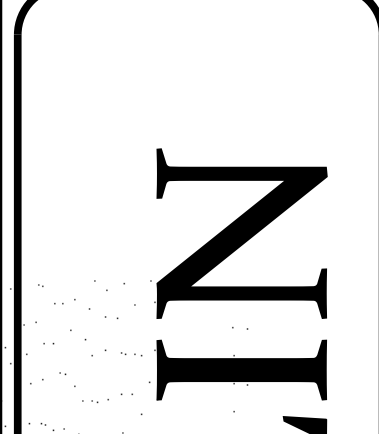
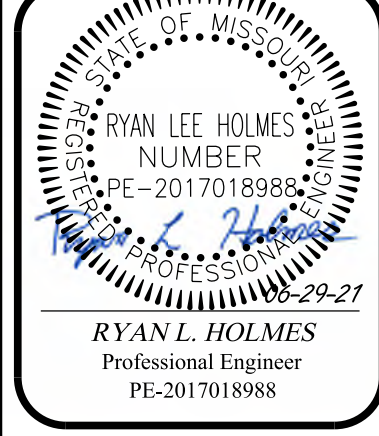
- 1. Underground utilities have been plotted from available information and therefore location shall be considered approximate only.
2. Gas, water and other underground utilities shall not conflict with the depth or horizontal location of existing or proposed sanitary and storm sewers, including house laterals.
3. All existing site improvements disturbed, damaged or destroyed shall be repaired or replaced to closely match preconstruction conditions.
4. All fill including places under proposed storm and sanitary sewer lines and paved areas including trench backfills within and off the road right-of-way shall be compacted to 90 percent of maximum density as determined by the "Modified AASHTO T-180 Compaction Test (ASTM D1557)".
5. The contractor shall prevent all storm, surface water, mud and construction debris from entering the existing sanitary sewer system.
6. All sanitary sewer flowlines and tops built without elevations furnished by the engineer will be the responsibility of the sewer contractor.
7. It is the responsibility of the contractor to adjust all sanitary sewer manholes (that are affected by the development) to finish grade.
8. Easements shall be provided for all sanitary sewers, storm sewers and all utilities on the record plat.
9. All sanitary sewer construction and materials shown shall conform to the current construction standards of Duckett Creek Sanitary District.
10. The Duckett Creek Sanitary District shall be notified at least 48 hours prior to construction for coordination of inspection.
11. All sanitary sewer building connections shall be designed so that the minimum vertical distance from the low point of the basement to the flowline of a sanitary sewer at the corresponding building connection shall not be less than the diameter of the pipe plus the vertical distance of 2 1/2 feet.
12. All sanitary sewer manholes shall be watertight in accordance with Missouri Dept. of Natural Resources specification 10 CSR 20-8.120(6)(F) 1.
13. All PVC sanitary sewer pipe shall conform to the requirements of ASTM D-3034 Standard Specification for PSM Polyvinyl Chloride Sewer Pipe, SDR-35 or equal, with "clean" 1/2 inch to 1 inch granular stone bedding uniformly graded.
14. All sanitary and storm sewer trench backfills shall be water jetted.
15. All pipes shall have positive drainage through manholes.
16. Epoxy Coating shall be used on all sanitary sewer manholes that receive pressurized mains.
17. NOT USED
18. Brick shall not be used on sanitary sewer manholes.
19. Existing sanitary sewer service shall not be interrupted.
20. Maintain access to existing residential driveways and streets.
21. Pre-manufactured adapters shall be used at all PVC to DIP connections.
22. Any permits, licenses, easements, or approvals required to work on public or private properties or roadways are the responsibility of the developer.
23. Type N Lock-Type Cover and Locking Device (Lock-Lug) shall be used where lock-type covers are required.
24. All sanitary sewer system work shall be conducted under the inspection of a representative of the District.
a. A mandrel test of all gravity sewers using a mandrel with a diameter that has a diameter 95% of the inside pipe diameter.
b. An air pressure test of all gravity sewers to a pressure of 5 PSI with no observed drop in pressure during a test period of 5 minutes.
c. A vacuum test of all manholes for a period of 1 minute and the vacuum shall be 10" of mercury and may not drop below 9" of mercury at the end of the 1 minute test.

PUBLIC WATER SUPPLY DISTRICT NO. 2 NOTES

- 1. The Water District requires one (1) week notice before the start of construction.
2. It is the contractor's responsibility to obtain any City or MODOT permits required to work along the roadways.
3. All water mains, valves, fittings, hydrants, and related items are to be installed in accordance with the current PWSD #2 of St. Charles County Guidelines and Specifications as approved by MODNR Review No. 6050805-13.
4. All meter pits / vaults must be installed in "green space" per the Water District's specifications.
5. All connections to existing public water mains must be made per the Water District's specifications.

UNITED STATES POSTAL SERVICE (USPS) NOTES

- 1. Centralized Box Units (CBUs) must be installed at least one week prior to customer occupancy.
2. CBUs must not be installed until the local USPS representative has conducted an onsite visit to ensure compliance with the official specifications.
3. CBUs must be installed facing the correct direction.
4. Notify your local USPS representative immediately upon completion of the CBU installation so that we can install the arrow lock and secure the unit.
5. All CBU compartment keys will be distributed by the builder/developer at the time of move in.
6. Any deviations from the USPS designated location of the CBU must not occur without first receiving authorization from the local USPS representative.



GENERAL NOTES table with fields: Design By: R/LH, Drawn By: R/LH, Checked By: R/LH, Date: 06-28-21, and a large C03 stamp.