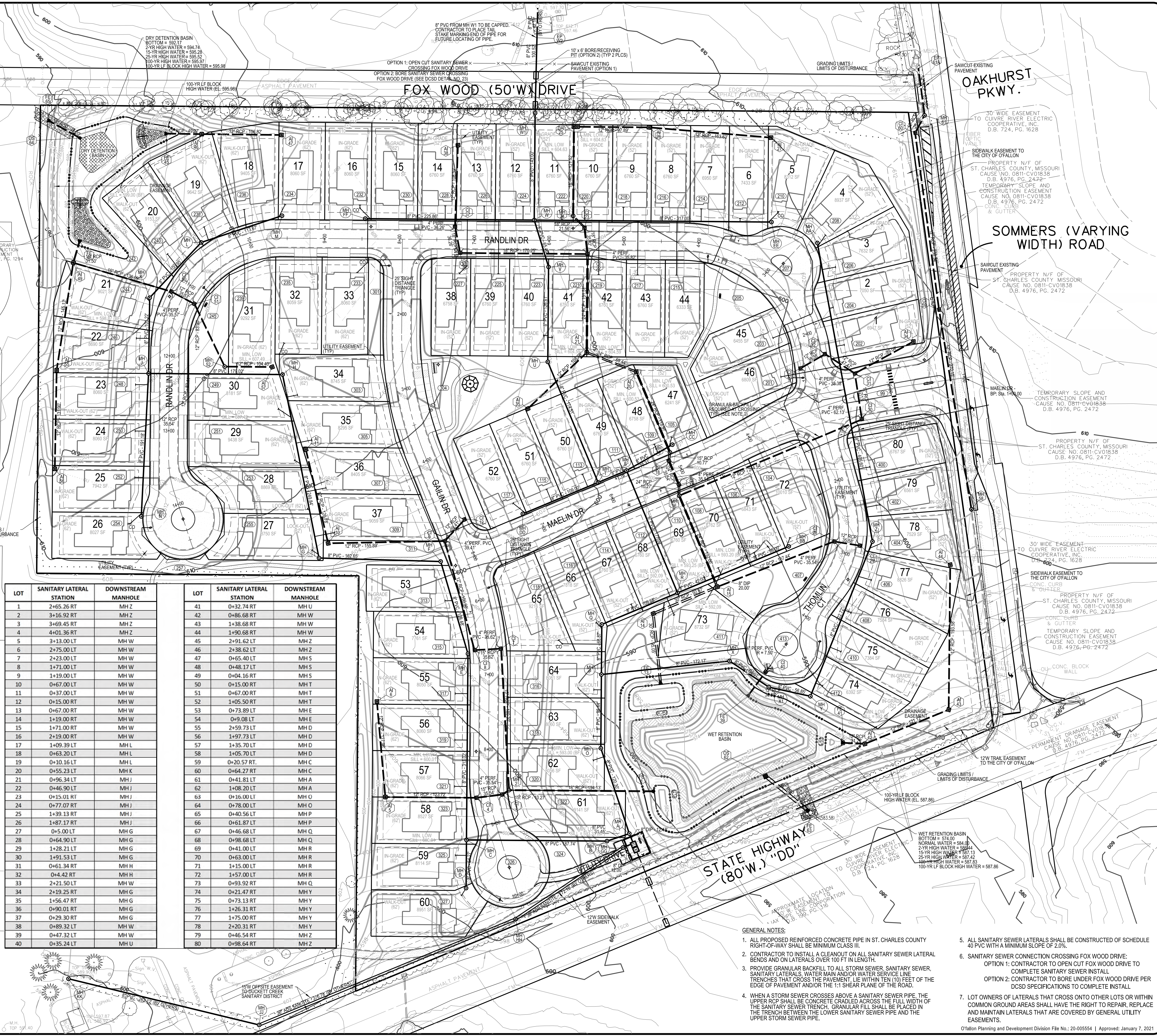


Scale in Feet
Scale: 1"=60'



| LOT | SANITARY LATERAL STATION | DOWNSTREAM MANHOLE | LOT | SANITARY LATERAL STATION | DOWNSTREAM MANHOLE |
|-----|--------------------------|--------------------|-----|--------------------------|--------------------|
| 1 | 2+65.26 RT | MH Z | 41 | 0+32.74 RT | MH U |
| 2 | 3+16.92 RT | MH Z | 42 | 0+86.68 RT | MH W |
| 3 | 3+69.45 RT | MH Z | 43 | 1+38.68 RT | MH W |
| 4 | 4+01.36 RT | MH Z | 44 | 1+90.68 RT | MH W |
| 5 | 3+13.00 LT | MH W | 45 | 2+91.62 LT | MH Z |
| 6 | 2+75.00 LT | MH W | 46 | 2+38.62 LT | MH Z |
| 7 | 2+23.00 LT | MH W | 47 | 0+65.40 LT | MH S |
| 8 | 1+71.00 LT | MH W | 48 | 0+48.17 LT | MH S |
| 9 | 1+19.00 LT | MH W | 49 | 0+04.16 RT | MH S |
| 10 | 0+67.00 LT | MH W | 50 | 0+15.00 RT | MH T |
| 11 | 0+37.00 LT | MH W | 51 | 0+67.00 RT | MH T |
| 12 | 0+15.00 RT | MH W | 52 | 1+05.50 RT | MH T |
| 13 | 0+67.00 RT | MH W | 53 | 0+73.89 LT | MH E |
| 14 | 1+19.00 RT | MH W | 54 | 0+93.08 LT | MH E |
| 15 | 1+71.00 RT | MH W | 55 | 2+59.73 LT | MH D |
| 16 | 2+19.00 RT | MH W | 56 | 1+97.73 LT | MH D |
| 17 | 1+09.39 LT | MH L | 57 | 1+35.70 LT | MH D |
| 18 | 0+63.20 LT | MH L | 58 | 1+05.70 LT | MH D |
| 19 | 0+10.16 LT | MH L | 59 | 0+20.57 RT | MH C |
| 20 | 0+55.23 LT | MH K | 60 | 0+64.27 RT | MH C |
| 21 | 0+96.34 LT | MH J | 61 | 0+41.81 LT | MH A |
| 22 | 0+46.90 LT | MH J | 62 | 1+08.20 LT | MH A |
| 23 | 0+15.01 RT | MH J | 63 | 0+16.00 LT | MH O |
| 24 | 0+77.07 RT | MH J | 64 | 0+78.00 LT | MH O |
| 25 | 1+39.13 RT | MH J | 65 | 0+40.56 LT | MH P |
| 26 | 1+87.17 RT | MH J | 66 | 0+61.87 LT | MH P |
| 27 | 0+5.00 LT | MH Q | 67 | 0+46.68 LT | MH Q |
| 28 | 0+64.90 LT | MH G | 68 | 0+98.68 LT | MH Q |
| 29 | 1+28.21 LT | MH G | 69 | 0+41.00 LT | MH R |
| 30 | 1+91.53 LT | MH G | 70 | 0+63.00 LT | MH R |
| 31 | 0+61.34 RT | MH H | 71 | 1+15.00 LT | MH R |
| 32 | 0+4.42 RT | MH H | 72 | 1+57.00 LT | MH R |
| 33 | 2+21.50 LT | MH W | 73 | 0+93.92 RT | MH Q |
| 34 | 2+19.25 RT | MH G | 74 | 0+21.47 RT | MH Y |
| 35 | 1+56.47 RT | MH G | 75 | 0+73.13 RT | MH Y |
| 36 | 0+90.01 RT | MH G | 76 | 1+26.31 RT | MH Y |
| 37 | 0+29.30 RT | MH G | 77 | 1+75.00 RT | MH Y |
| 38 | 0+89.32 LT | MH W | 78 | 2+20.31 RT | MH Y |
| 39 | 0+47.32 LT | MH W | 79 | 0+46.54 RT | MH Z |
| 40 | 0+35.24 LT | MH U | 80 | 0+98.64 RT | MH Z |

- SANITARY SEWER NOTES**
- DUCKETT CREEK SANITARY DISTRICT (DCSD) INSPECTION, COORDINATION AND APPROVAL IS REQUIRED FOR REPLACEMENT AND ABANDONMENT OF EXISTING SANITARY SEWER MAIN.
 - EXISTING SANITARY SEWER SERVICE SHALL NOT BE INTERRUPTED.
 - EXISTING SANITARY SEWER MAIN SHALL NOT BE ABANDONED UNTIL REPLACEMENT SANITARY SEWER MAIN IS INSTALLED, INSPECTED, TESTED AND APPROVED BY DCSD INSPECTOR.
 - EXISTING SANITARY SEWER MAIN TO BE ABANDONED SHALL BE GROUT FILLED AND PLUGGED AT EACH TERMINUS OF ABANDONED PIPE.
 - EXISTING SANITARY MANHOLES TO BE ABANDONED SHALL BE REMOVED.
 - CONTACT DCSD INSPECTION DEPARTMENT AT 636-441-1244 TO SCHEDULE INSPECTION. 48 HOURS ADVANCED NOTICE IS REQUIRED.

CALL MISSOURI ONE CALL SYSTEMS INC. TWO FULL WORKING DAYS IN ADVANCE OF STARTING

THE UNDERGROUND UTILITIES SHOWN HEREIN WERE PLOTTED FROM AVAILABLE INFORMATION AND DO NOT NECESSARILY REFLECT THE ACTUAL EXISTENCE, OR NON EXISTENCE, SIZE, TYPE, NUMBER, OR LOCATION OF THESE OR OTHER UTILITIES. THE GENERAL CONTRACTOR SHALL BE RESPONSIBLE FOR VERIFYING THE ACTUAL LOCATION OF ALL UNDERGROUND UTILITIES IN THE FIELD, SHOWN OR NOT SHOWN, PRIOR TO ANY GRADING, EXCAVATION, OR CONSTRUCTION OF IMPROVEMENTS. THESE PROVISIONS SHALL IN NO WAY ABSOLVE ANY PARTY FROM COMPLYING WITH THE UNDERGROUND FACILITY SAFETY AND DAMAGE PREVENTION ACT, CHAPTER 319, RSMO.

WORK MISSOURI ONE-CALL 1-800-344-7483

- GENERAL NOTES:**
- ALL PROPOSED REINFORCED CONCRETE PIPE IN ST. CHARLES COUNTY RIGHT-OF-WAY SHALL BE MINIMUM CLASS III.
 - CONTRACTOR TO INSTALL A CLEANOUT ON ALL SANITARY SEWER LATERAL BENDS AND ON LATERALS OVER 100 FT IN LENGTH.
 - PROVIDE GRANULAR BACKFILL TO ALL STORM SEWER, SANITARY SEWER, SANITARY LATERALS, WATER MAIN AND/OR WATER SERVICE LINE TRENCHES THAT CROSS THE PAVEMENT. LIE WITHIN TEN (10) FEET OF THE EDGE OF PAVEMENT AND/OR THE 1:1 SHEAR PLANE OF THE ROAD.
 - WHEN A STORM SEWER CROSSES ABOVE A SANITARY SEWER PIPE, THE UPPER RCP SHALL BE CONCRETE GRAD ACROSS THE FULL WIDTH OF THE SANITARY SEWER TRENCH. GRANULAR FILL SHALL BE PLACED IN THE TRENCH BETWEEN THE LOWER SANITARY SEWER PIPE AND THE UPPER STORM SEWER PIPE.
 - ALL SANITARY SEWER LATERALS SHALL BE CONSTRUCTED OF SCHEDULE 40 PVC WITH A MINIMUM SLOPE OF 2.0%.
 - SANITARY SEWER CONNECTION CROSSING FOX WOOD DRIVE:
 - OPTION 1: CONTRACTOR TO OPEN CUT FOX WOOD DRIVE TO COMPLETE SANITARY SEWER INSTALL
 - OPTION 2: CONTRACTOR TO BORE UNDER FOX WOOD DRIVE PER DCSD SPECIFICATIONS TO COMPLETE INSTALL
 - LOT OWNERS OF LATERALS THAT CROSS ONTO OTHER LOTS OR WITHIN COMMON GROUND AREAS SHALL HAVE THE RIGHT TO REPAIR, REPLACE AND MAINTAIN LATERALS THAT ARE COVERED BY GENERAL UTILITY EASEMENTS.
- Fallon Planning and Development Division File No.: 20-00554 | Approved: January 7, 2021

MCKELVEY HOMES
Building A Tradition Of Excellence Since 1988
218 Chesterfield Towne Center
Chesterfield, MO 63005
Phone: (636) 530-6800

VOLZ
INCORPORATED
10849 Indian Head Indl. Blvd.
St. Louis, Missouri 63132
314.990.1250 Fax
www.volzinc.com
Aulinity #203

RYAN L. HOLMES
Professional Engineer
PE-2017018988

STORM & SANITARY SEWER PLAN

SOMMERLIN

Design By: R/L
Drawn By: R/L
Checked By: R/L

06-28-21
C07

Volz Project # 22074