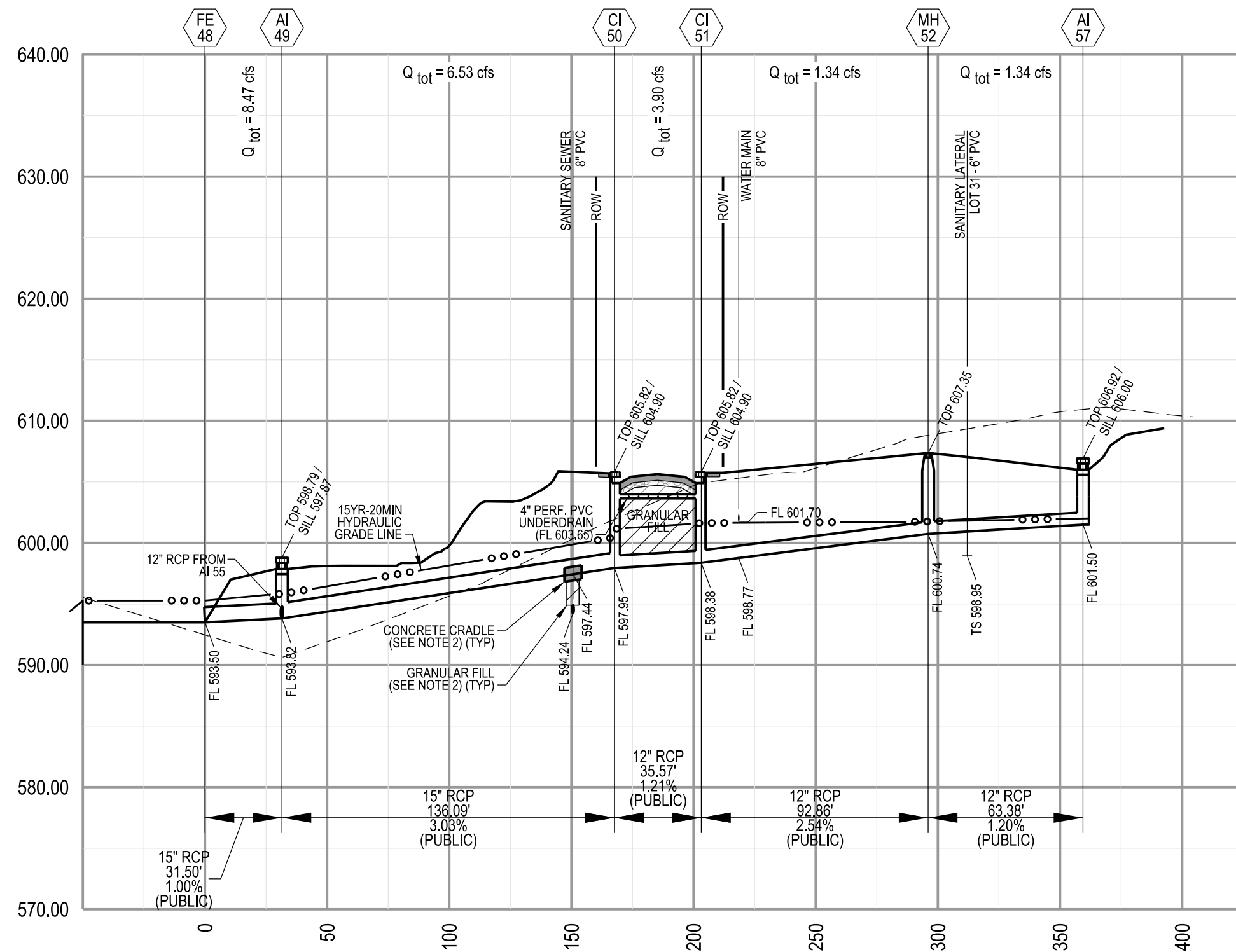
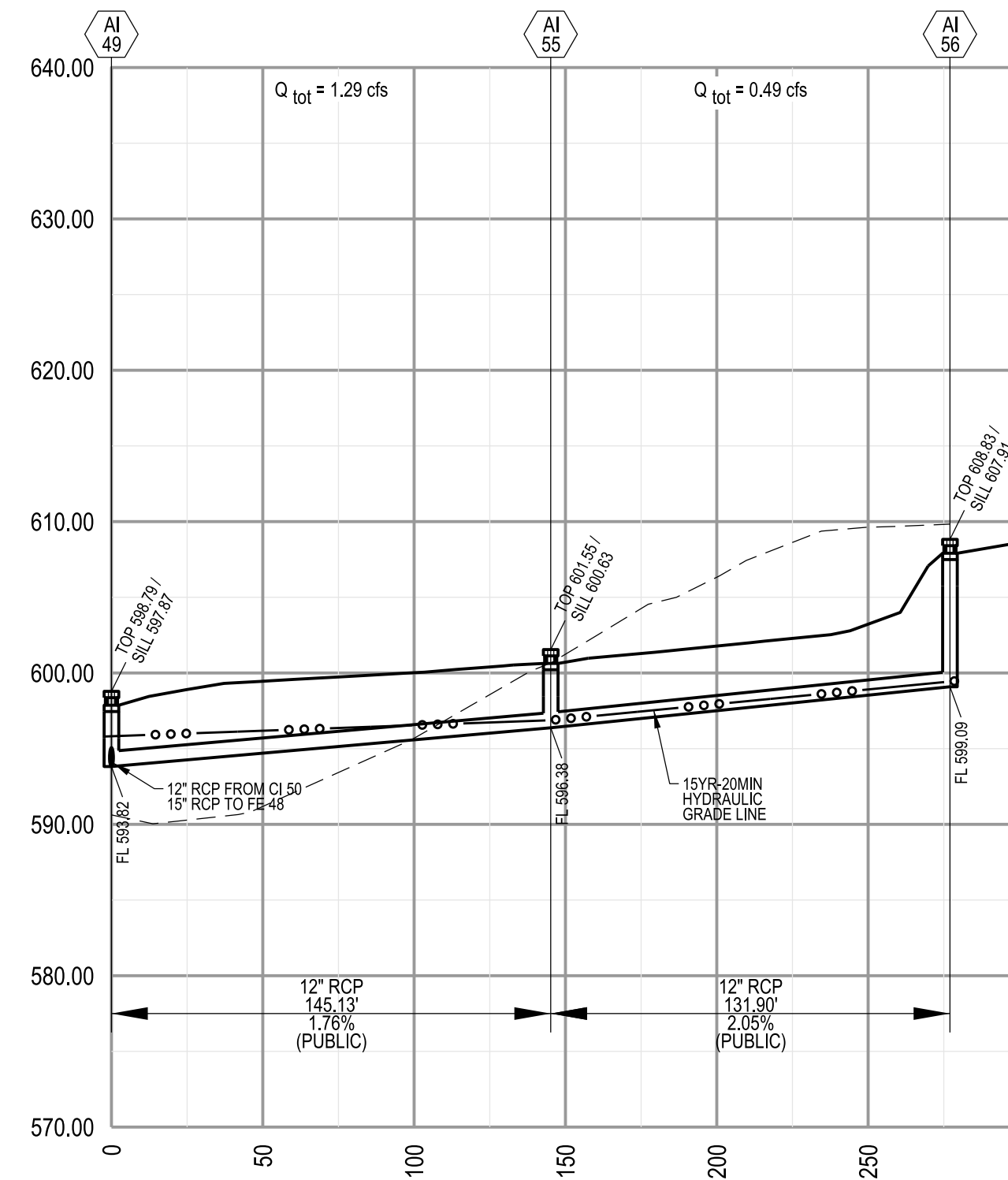


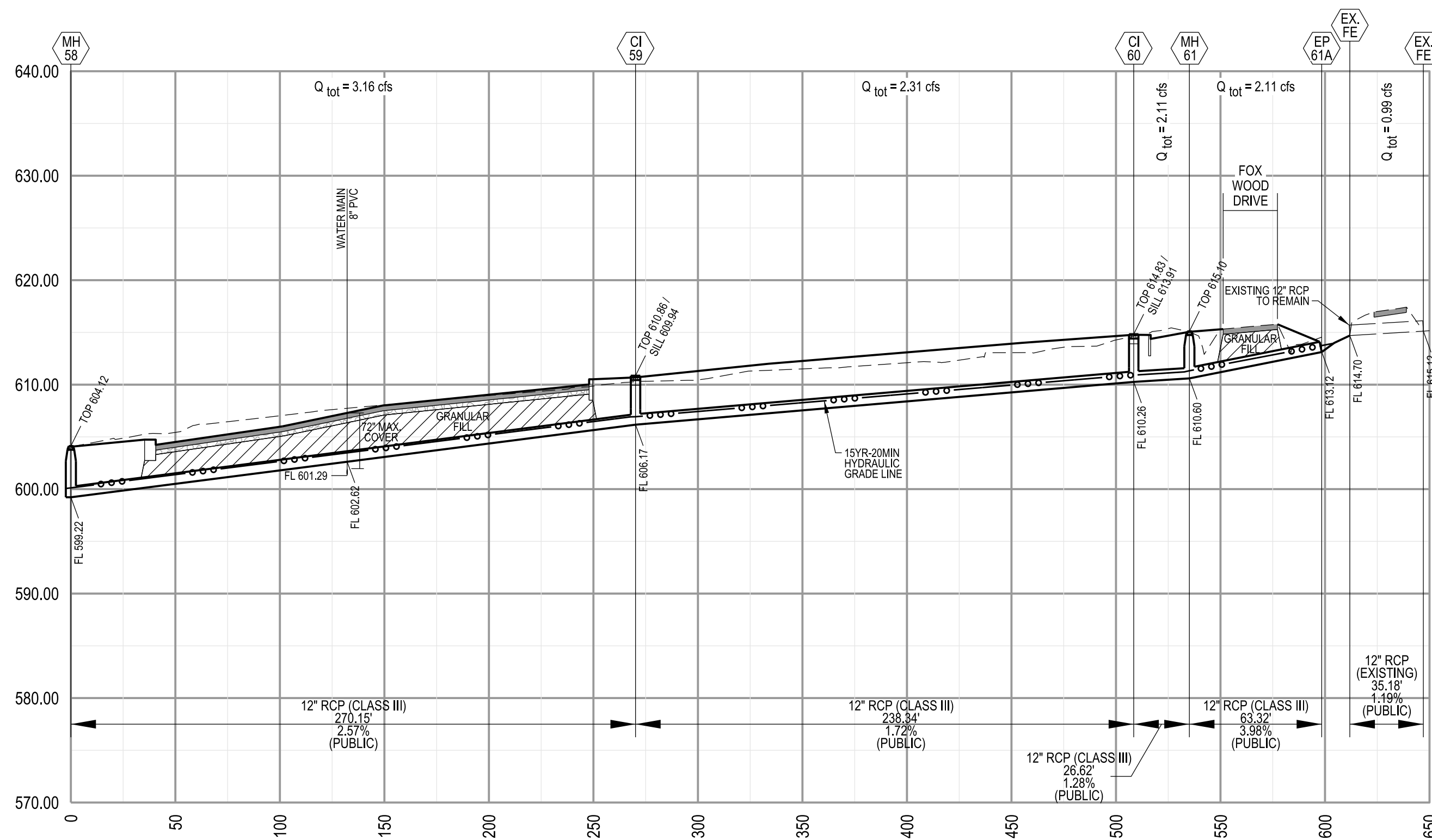
H:\CAD\22000-22999\22074\MapPlans\22074 - C17 Storm Sewer Profiles Sheet 3.dgn - Default 6/29/2021 4:15:14 PM Plotted by: rholmes Plot Scale: 50.0000 / in. Plot Driver: volz215.pdf.plt.ctb Pen Table: Volz215.pdf.tbl



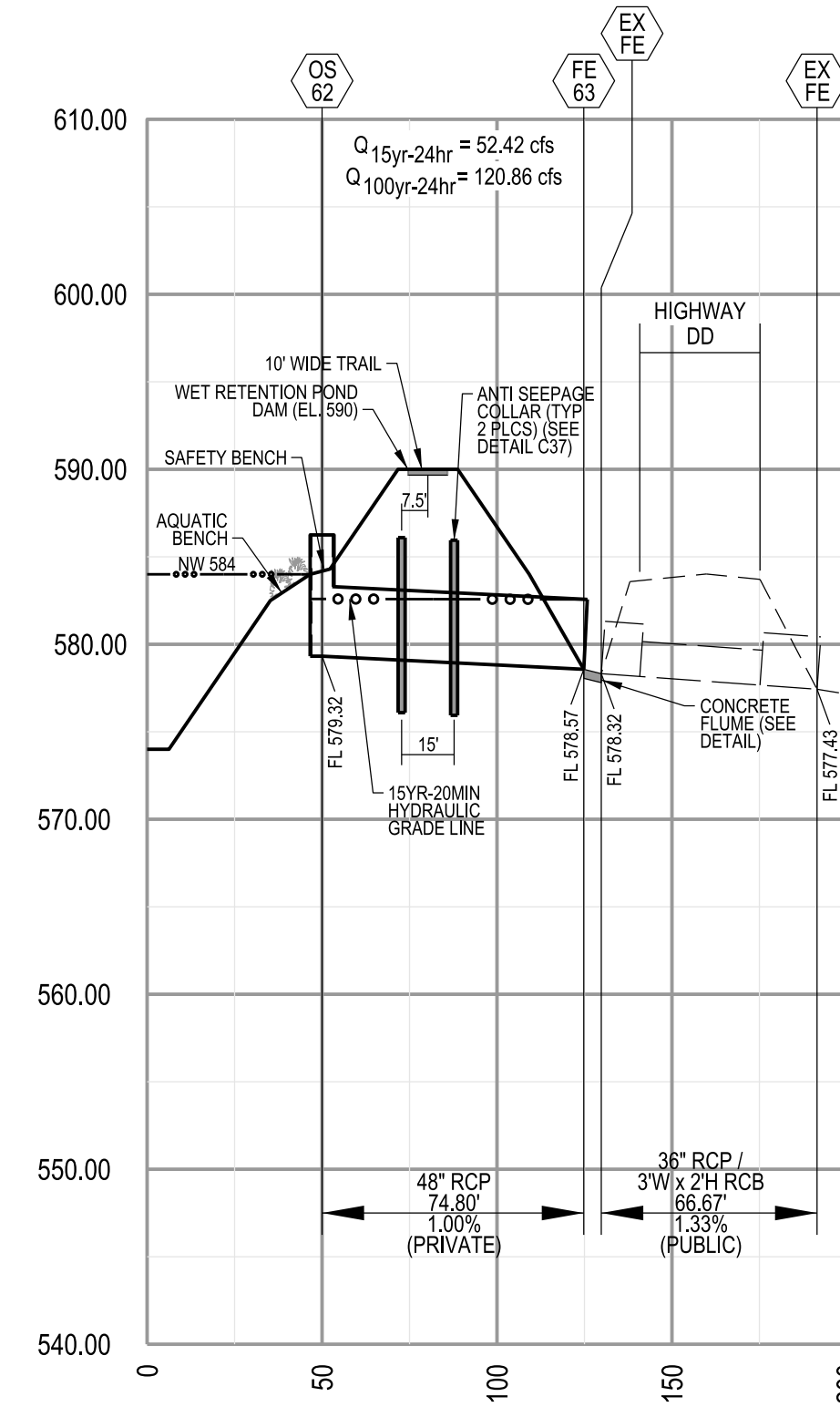
STORM PROFILE: FE 48 - AI 57
 HORIZONTAL SCALE: 1" = 50'
 VERTICAL SCALE: 1" = 10'



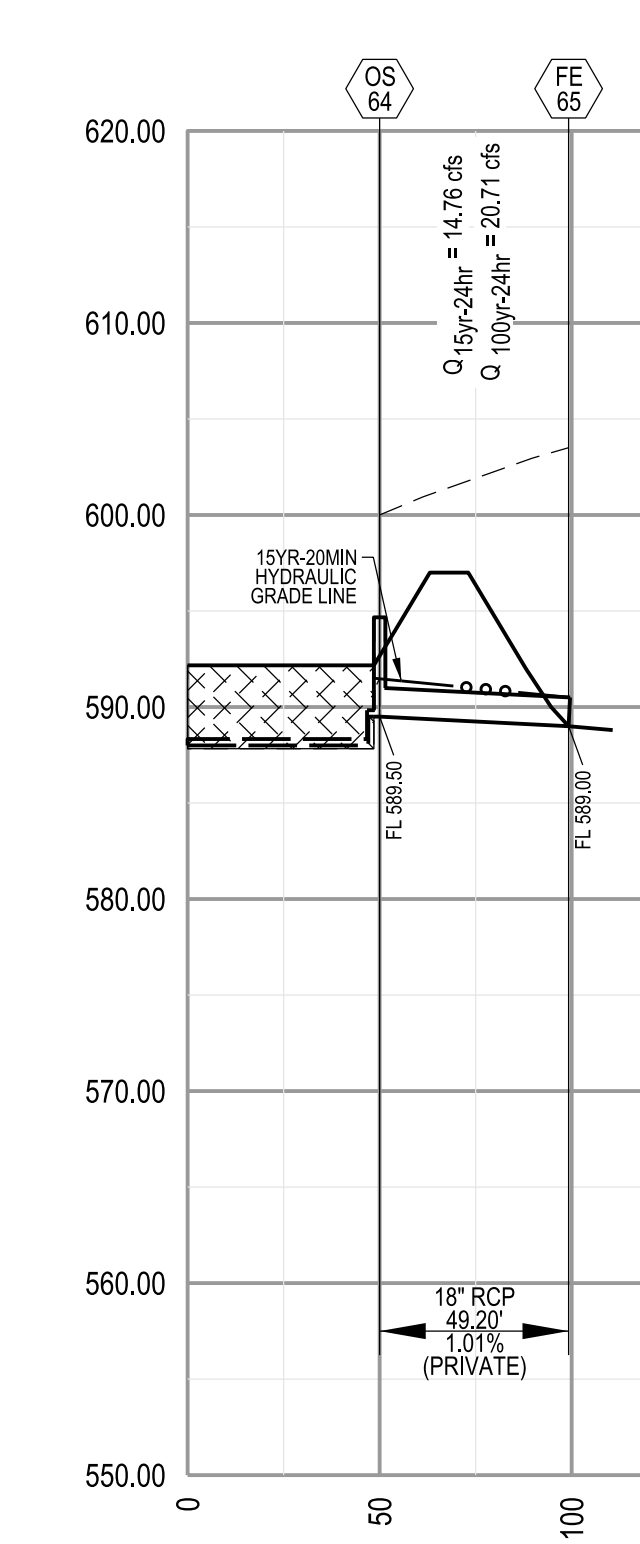
STORM PROFILE: AI 49 - AI 56
 HORIZONTAL SCALE: 1" = 50'
 VERTICAL SCALE: 1" = 10'



STORM PROFILE: MH 57 - MH 60
 HORIZONTAL SCALE: 1" = 50'
 VERTICAL SCALE: 1" = 10'




STORM PROFILE: OS 62 - FE 63
 HORIZONTAL SCALE: 1" = 50'
 VERTICAL SCALE: 1" = 10'



STORM PROFILE: OS 64 - FE 65
 HORIZONTAL SCALE: 1" = 50'
 VERTICAL SCALE: 1" = 10'

CALL MISSOURI ONE CALL SYSTEMS INC. TWO FULL WORKING DAYS IN ADVANCE OF STARTING



WORK MISSOURI ONE-CALL 1-800-344-7483

THE UNDERGROUND UTILITIES SHOWN HEREIN WERE PLOTTED FROM AVAILABLE INFORMATION AND DO NOT NECESSARILY REFLECT THE ACTUAL EXISTENCE, OR NON EXISTENCE, SIZE, TYPE, NUMBER, OR LOCATION OF THESE OR OTHER UTILITIES. THE GENERAL CONTRACTOR SHALL BE RESPONSIBLE FOR VERIFYING THE ACTUAL LOCATION OF ALL UNDERGROUND UTILITIES IN THE FIELD, SHOWN OR NOT SHOWN, PRIOR TO ANY GRADING, EXCAVATION, OR CONSTRUCTION OF IMPROVEMENTS. THESE PROVISIONS SHALL IN NO WAY ABSOLVE ANY PARTY FROM COMPLYING WITH THE UNDERGROUND FACILITY SAFETY AND DAMAGE PREVENTION ACT, CHAPTER 319, RSMO.

GENERAL NOTES

1. PROVIDE GRANULAR BACKFILL TO ALL STORM SEWER, SANITARY SEWER, SANITARY LATERALS, WATER MAIN, AND/OR WATER SERVICE LINE TRENCHES THAT CROSS THE PAVEMENT, LIE WITHIN TEN (10) FEET OF THE EDGE OF PAVEMENT AND/OR THE 1:1 SHEAR PLANE OF THE ROAD.
2. WHEN A STORM SEWER CROSSES ABOVE A SANITARY SEWER PIPE, THE UPPER RCP SHALL BE CONCRETE CRADLED ACROSS THE FULL WIDTH OF THE SANITARY SEWER TRENCH. GRANULAR FILL SHALL BE PLACED IN THE TRENCH BETWEEN THE LOWER SANITARY SEWER PIPE AND THE UPPER STORM SEWER PIPE.

MCKELVEY HOLMES
 Building A Tradition Of Excellence Since 1888
 218 Chesterfield Towne Center
 Chesterfield, MO 63005
 Phone: (636) 530-6800

VOLZ Incorporated
 INCORPORATED
 10849 Indian Head Indl. Blvd.
 St. Louis, Missouri 63132
 314.890.1250 Fax
 www.volzinc.com
 Aulicity #203

RYAN L. HOLMES
 Professional Engineer
 PE-2017018988

SOMMERLIN

STORM SEWER PROFILES:
 SHEET 3

Design By: R/H
 Drawn By: R/H
 Checked By: R/H

Volz Project # 22074

06-28-21
 C17