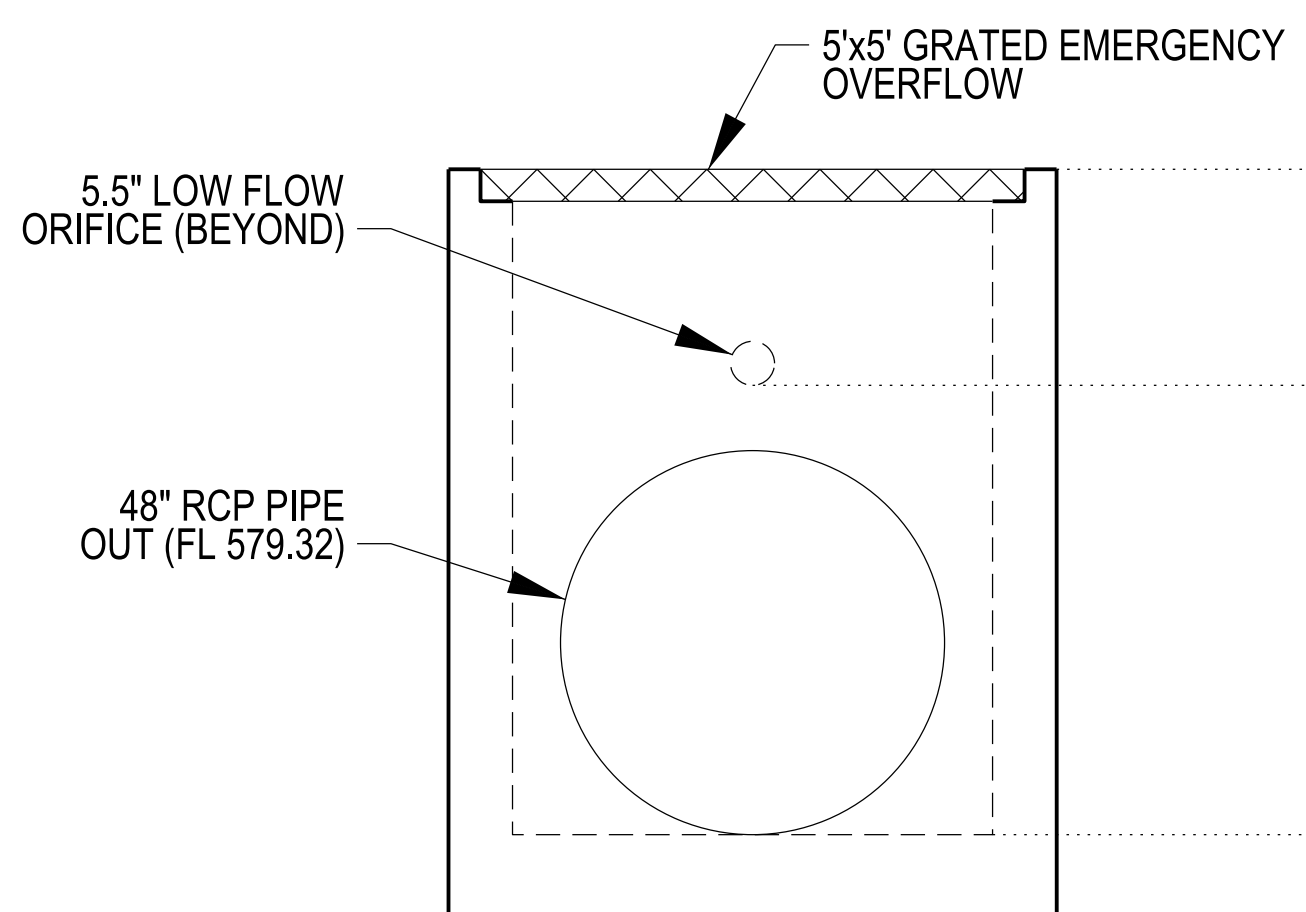
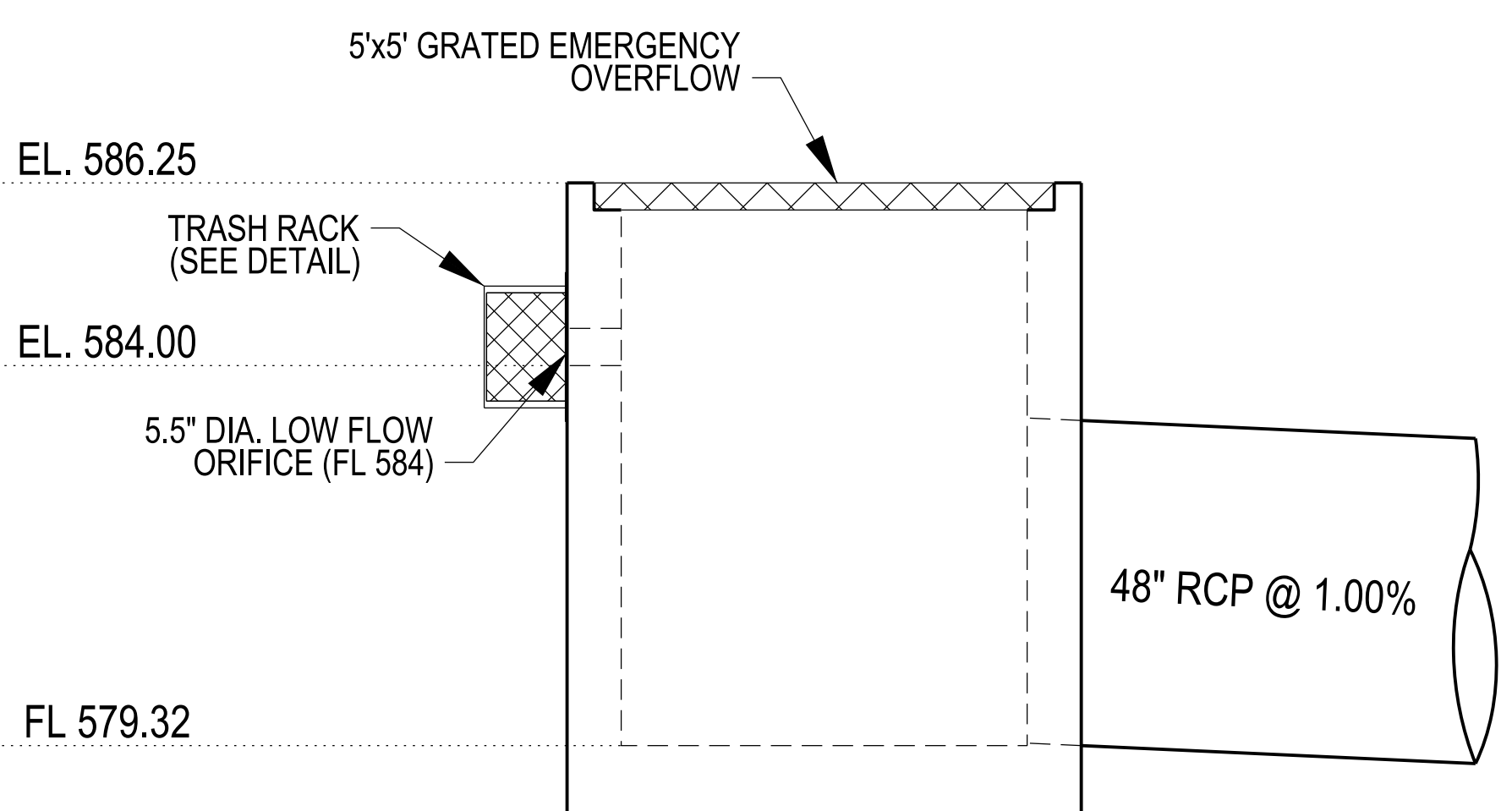


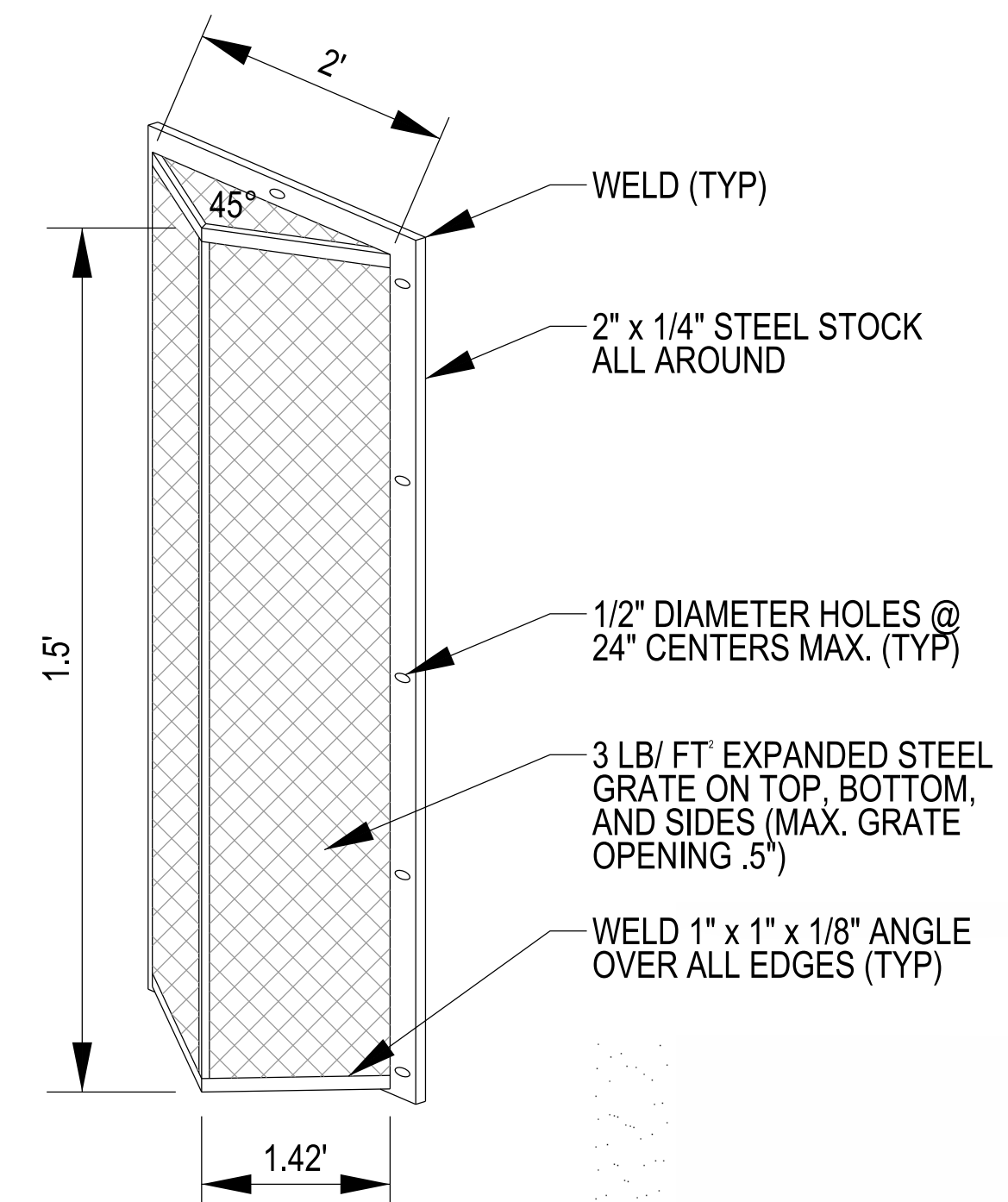
**OS 62 TOP VIEW**  
SCALE: 1" = 2'



**SECTION A-A**  
SCALE: 1" = 2'

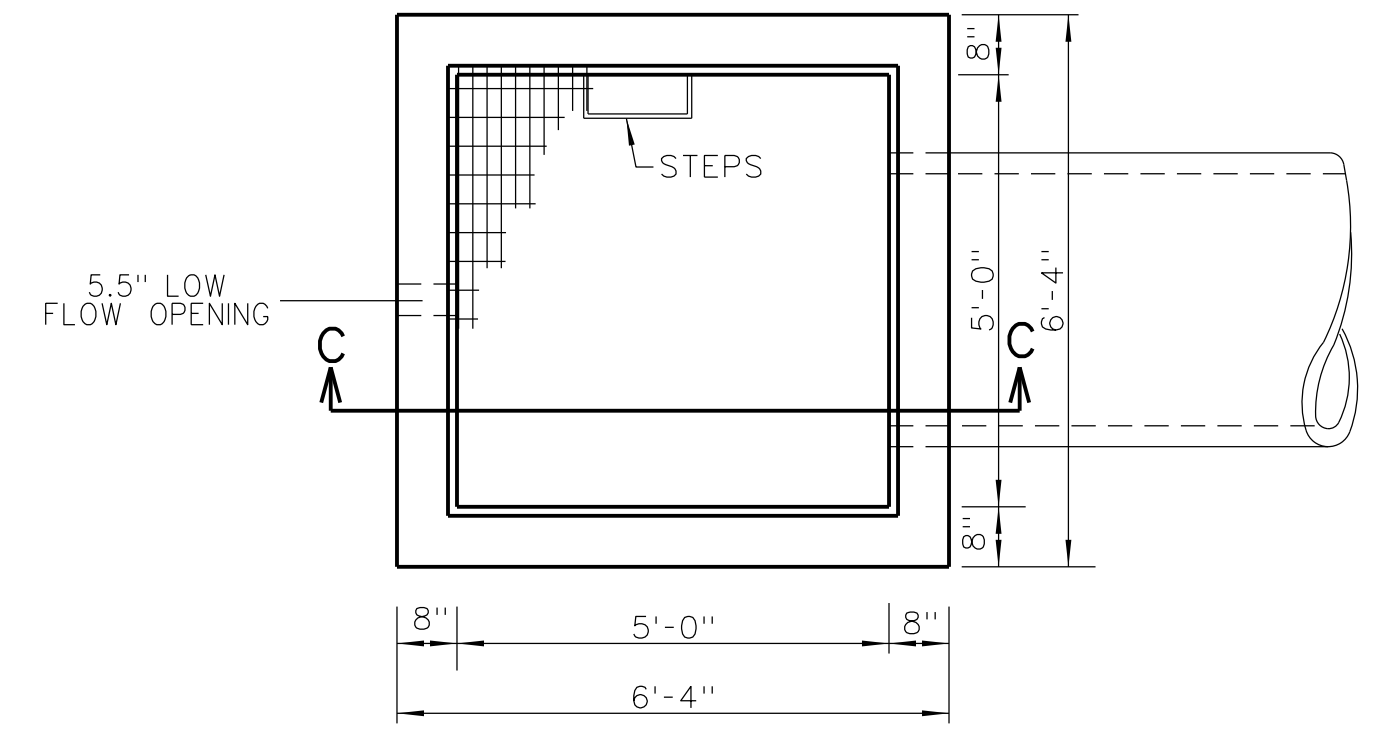


**SECTION B-B**  
SCALE: 1" = 2'



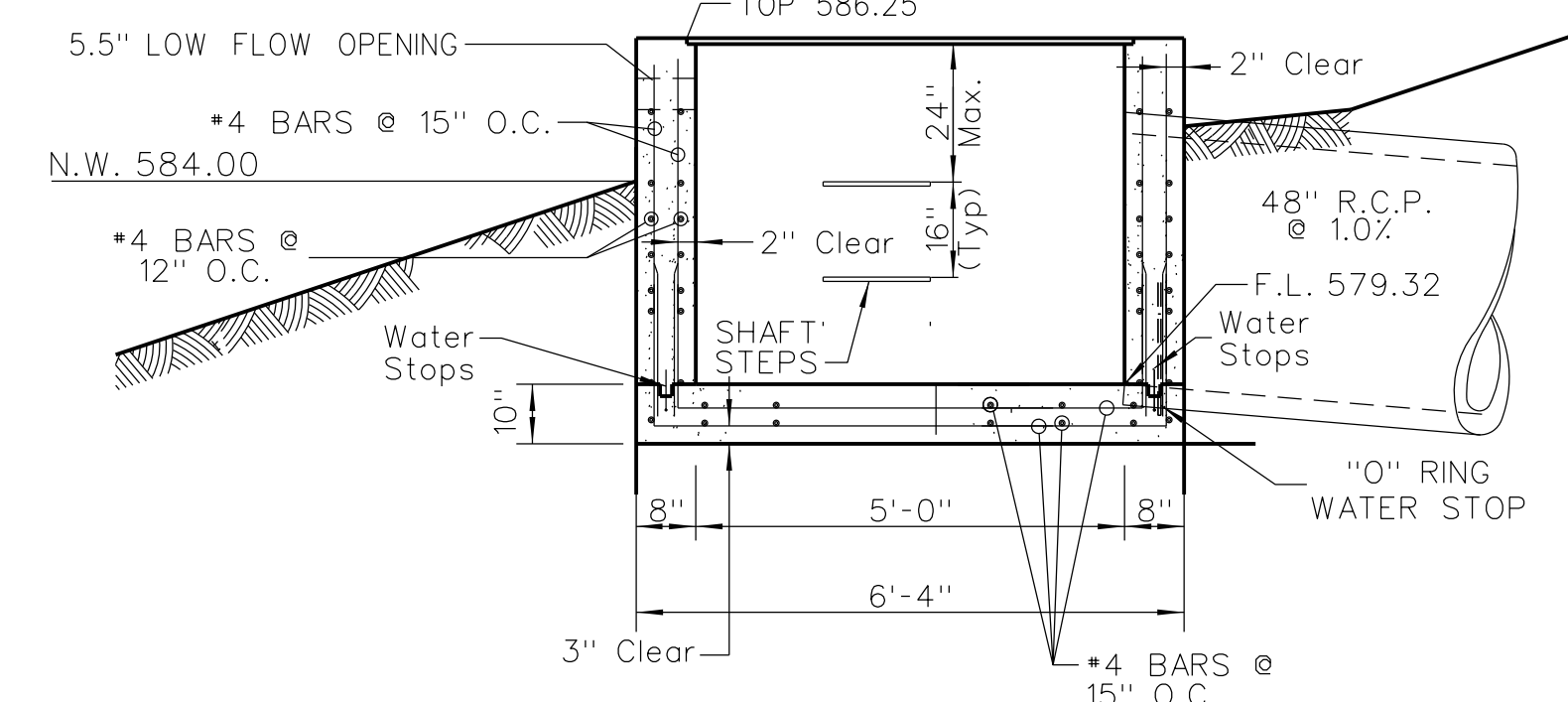
- NOTES FOR TRASH RACK:**
1. TRASH RACK SHALL BE CENTERED OVER OPENING.
  2. STEEL TO CONFORM TO ASTM-36.
  3. ALL SURFACES SHALL BE COATED WITH ZRC COLD GALVANIZING COMPOUND AFTER WELDING.
  4. TRASH RACK SHALL BE FASTENED TO THE WALL WITH 1/2" MASONRY ANCHORS. TRASH RACK SHALL BE REMOVEABLE.

**TRASH RACK DETAIL  
(OR APPROVED EQUAL)**  
N.T.S.

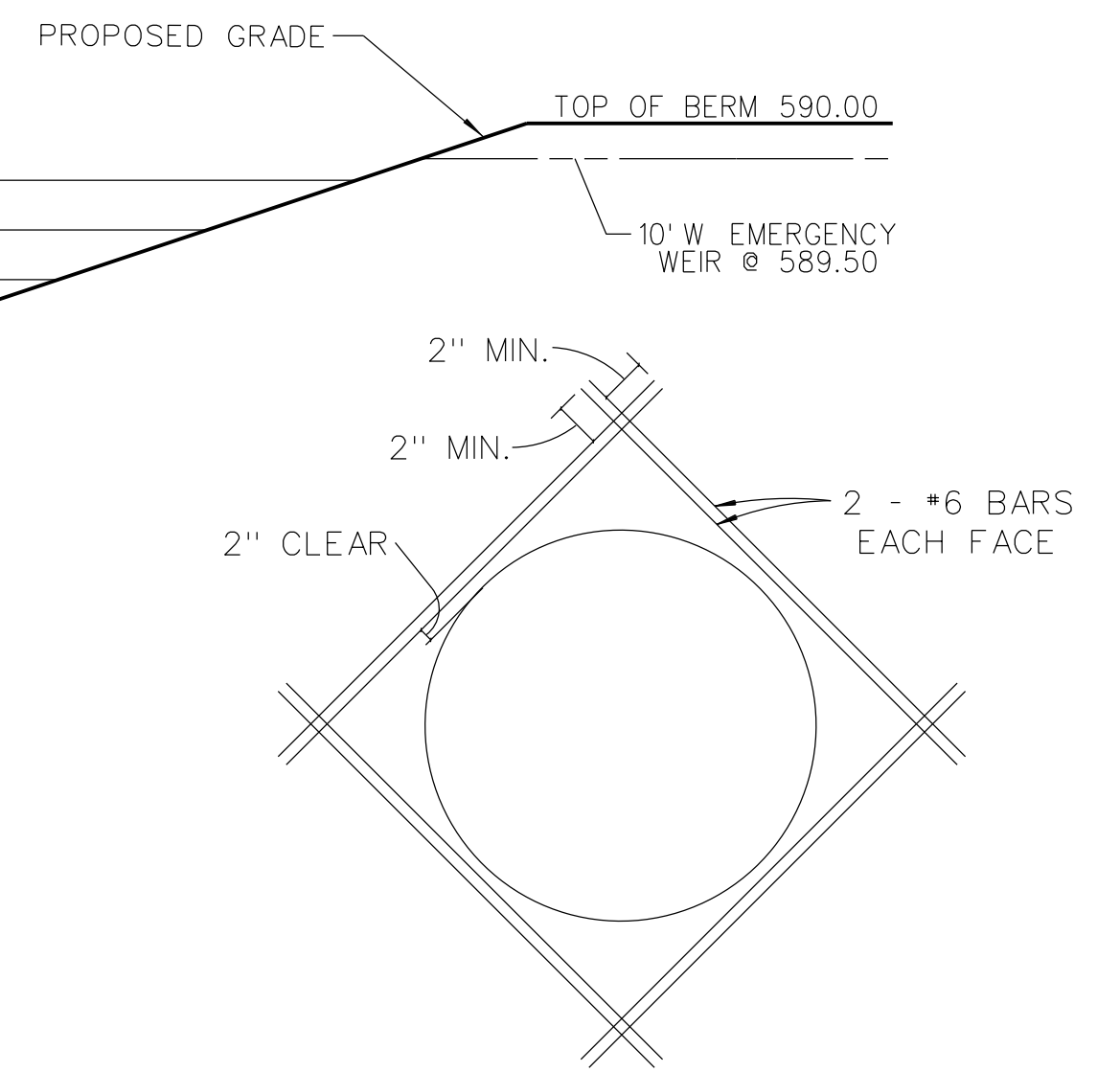


**OS 62 TOP VIEW**  
N.T.S.

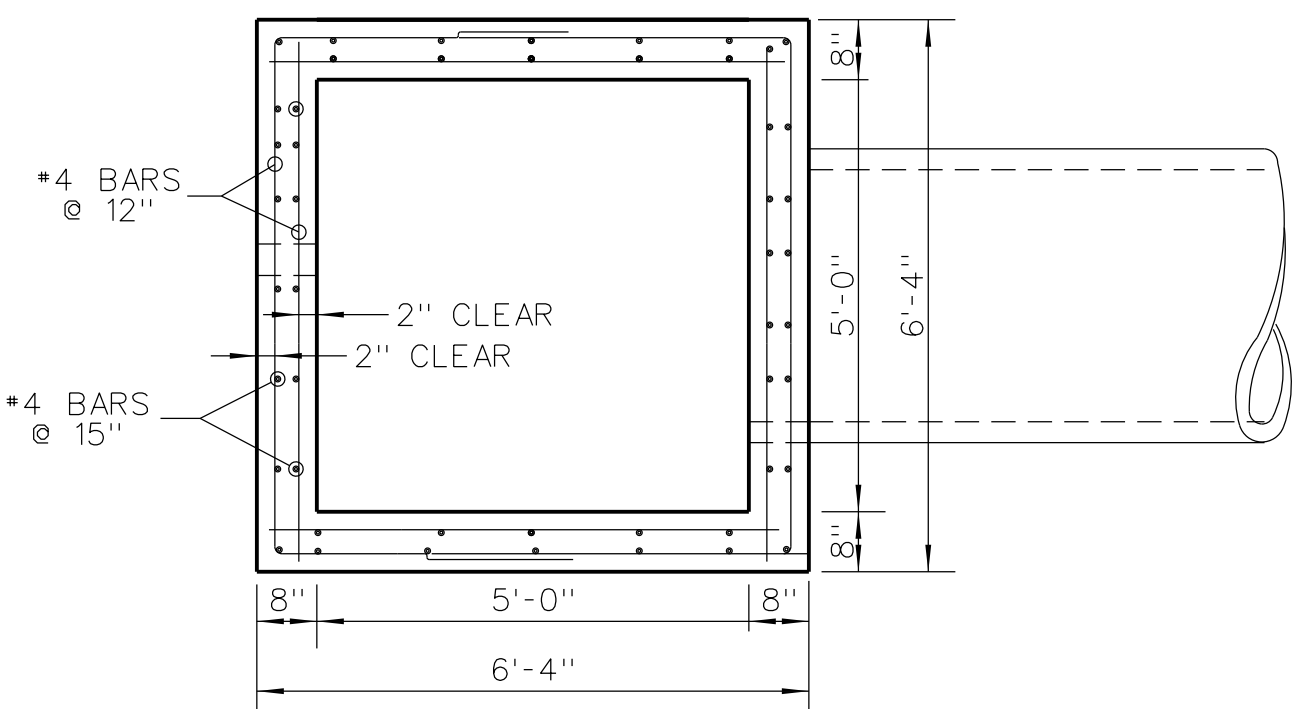
100-YR HW = 587.83 / 100-YR LF BLOCK HW = 587.86  
 25-YR HW = 587.42  
 15-YR HW = 587.13  
 2-YR HW = 586.44



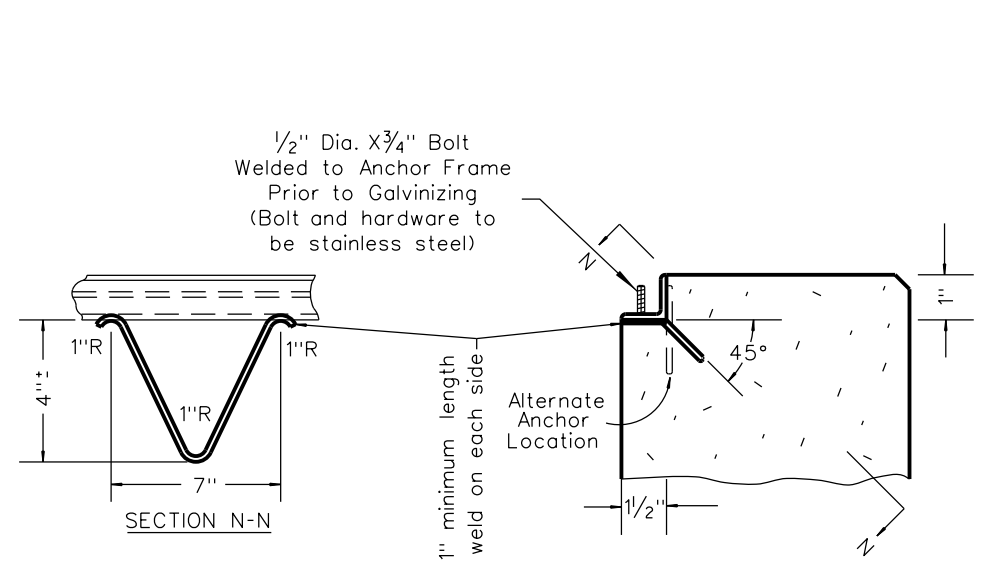
**SECTION C-C  
OS 62 REINFORCEMENT DETAIL**  
N.T.S.



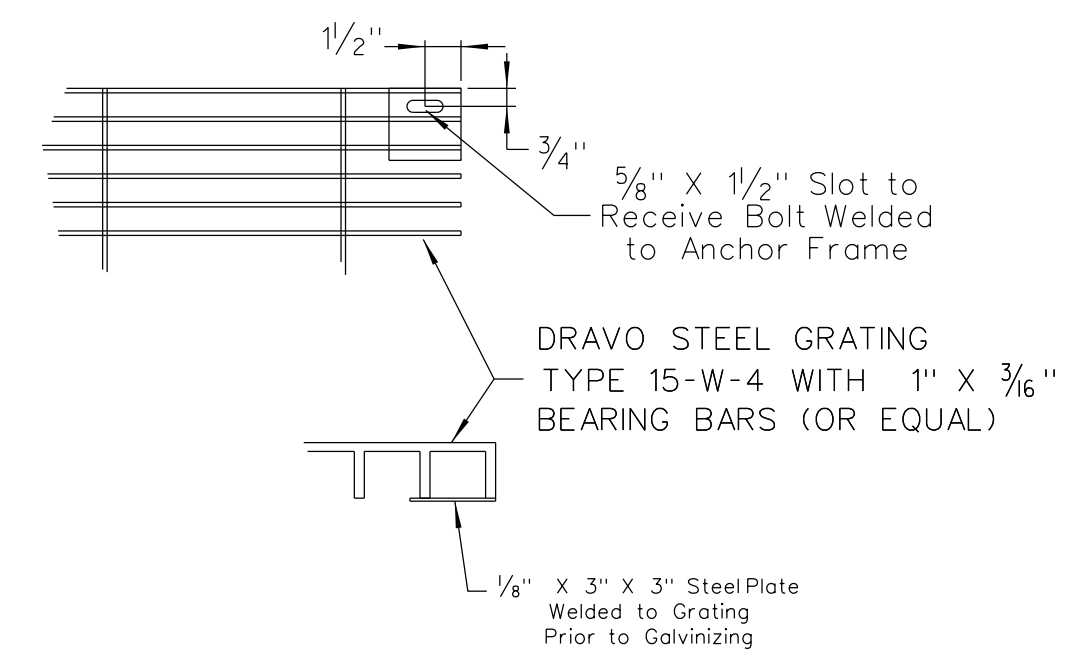
**REINFORCEMENT AROUND  
OPENING**  
N.T.S.



**OS 62 TOP VIEW  
REINFORCEMENT DETAIL**  
N.T.S.



**DETAIL OF CONTINUOUS ANCHOR FOR  
ANGLE SEAT & BOLT DOWN GRATE**  
N.T.S.



- CONSTRUCTION NOTES:**
1. Concrete for the structure shall be "air entrained" and contain at least 6 sacks Class "A" Portland Cement per cubic yard. The concrete shall be placed at a slump of 4 inches +/- 1/2 inch. The concrete shall be proportioned and transported in accordance with ASTM C-94.
  2. Reinforcing steel shall conform to ASTM C-615-60 with deformations conforming to ASTM A-305 and shall have a minimum cover of 2 inches except for 3 inches where concrete is poured against earth.
  3. Laps and/or splices in reinforcing steel shall be a minimum of 30 bar diameters.
  4. Keyed joints shown are to be 2-inch x 2-inch keyed construction joints.
  5.  $f_s = 24,000$  psi.
  6.  $f_c = 3,750$  psi.
  7. All exposed edges to have a 3/4-inch chamfer.
  8. Contractor to provide for bypass of stormwater during construction of structure.
  9. All soil specifications shall be directed by soils engineer.

CALL MISSOURI ONE CALL SYSTEMS INC. TWO FULL WORKING DAYS IN ADVANCE OF STARTING

WORK MISSOURI ONE-CALL 1-800-344-7483

THE UNDERGROUND UTILITIES SHOWN HEREIN WERE PLOTTED FROM AVAILABLE INFORMATION AND DO NOT NECESSARILY REFLECT THE ACTUAL EXISTENCE, OR NON EXISTENCE, SIZE, TYPE, NUMBER, OR LOCATION OF THESE OR OTHER UTILITIES. THE GENERAL CONTRACTOR SHALL BE RESPONSIBLE FOR VERIFYING THE ACTUAL LOCATION OF ALL UNDERGROUND UTILITIES IN THE FIELD, SHOWN OR NOT SHOWN, PRIOR TO ANY GRADING, EXCAVATION, OR CONSTRUCTION OF IMPROVEMENTS. THESE PROVISIONS SHALL IN NO WAY ABSOLVE ANY PARTY FROM COMPLYING WITH THE UNDERGROUND FACILITY SAFETY AND DAMAGE PREVENTION ACT, CHAPTER 319, RSMO.

**MCKELVEY HOLMES**  
 Building A Tradition Of Excellence Since 1888  
 218 Chesterfield Towne Center  
 Chesterfield, MO 63005  
 Phone: (636) 530-6800

**VOLZ** Incorporated  
 INCORPORATED  
 ENGINEERING ARCHITECTURE  
 LANDSCAPE ARCHITECTURE  
 TRANSPORTATION CONSTRUCTION MANAGEMENT  
 10849 Indian Head Ind. Blvd.  
 St. Louis, Missouri 63132  
 314.890.1250 FAX  
 www.volzinc.com  
 Aulinity #203

RYAN L. HOLMES  
 Professional Engineer  
 PE-2017018988

**SOMMERLIN**

**SOMMERLIN**

WET RETENTION POND OUTFALL STRUCTURE DETAILS (OS 62)

Design By: R/LH  
 Drawn By: R/LH  
 Checked By: R/LH

Vote Project # 22074

06-28-21  
 C22-1

H:\CAD\22000-22999\22074\ImpPlans\22074 - C221 Wet Retention Pond Structure Details OS 62.dgn - Default 6/29/2021 4:31:10 PM Plotted by: rhomes Plot Scale: 10:0000 - 1/4" = 1'-0" Plot Driver: volz15.pdf.plt Plot Pen Table: volz15.pdf.plt