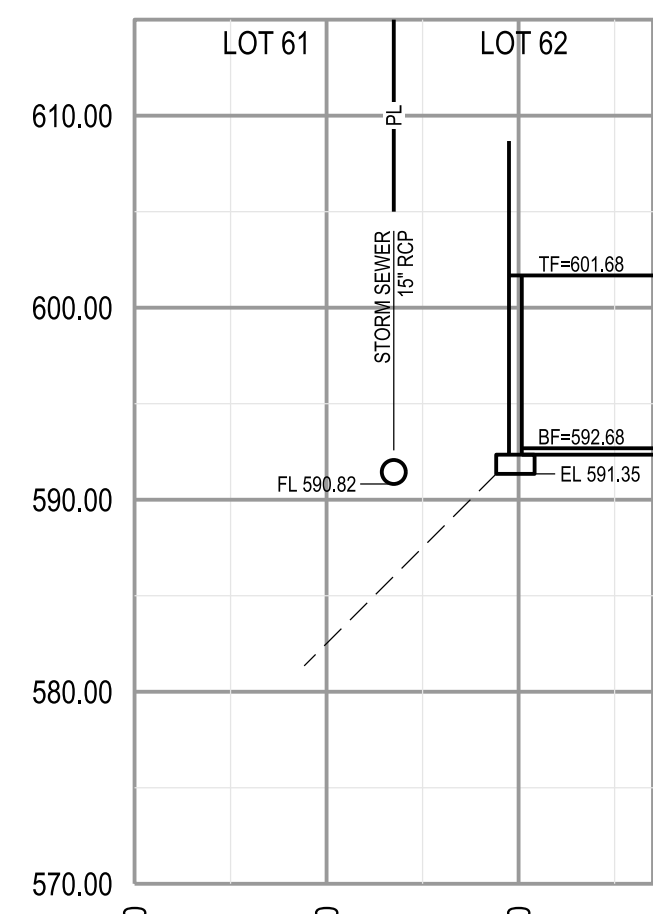
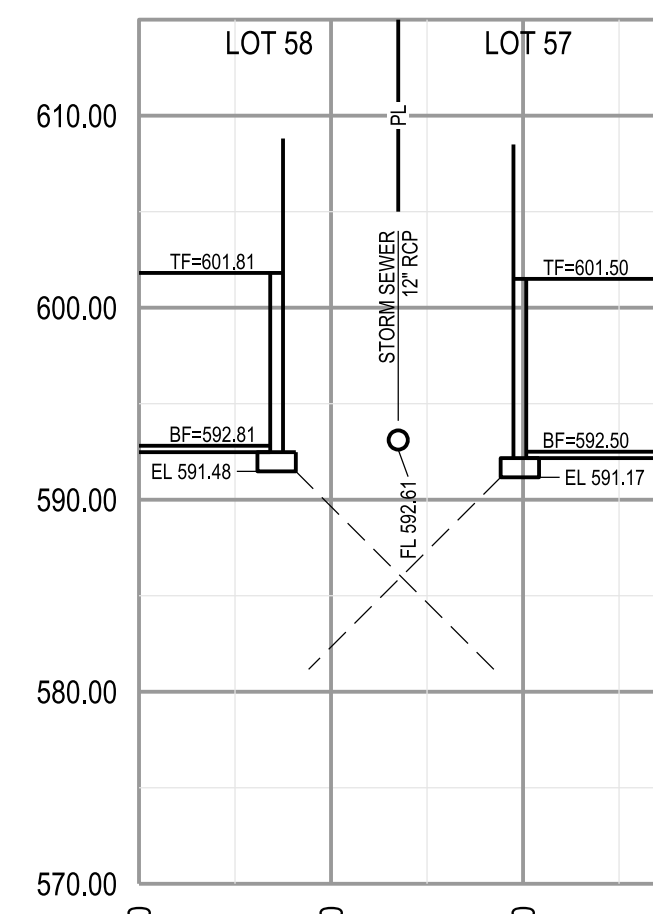


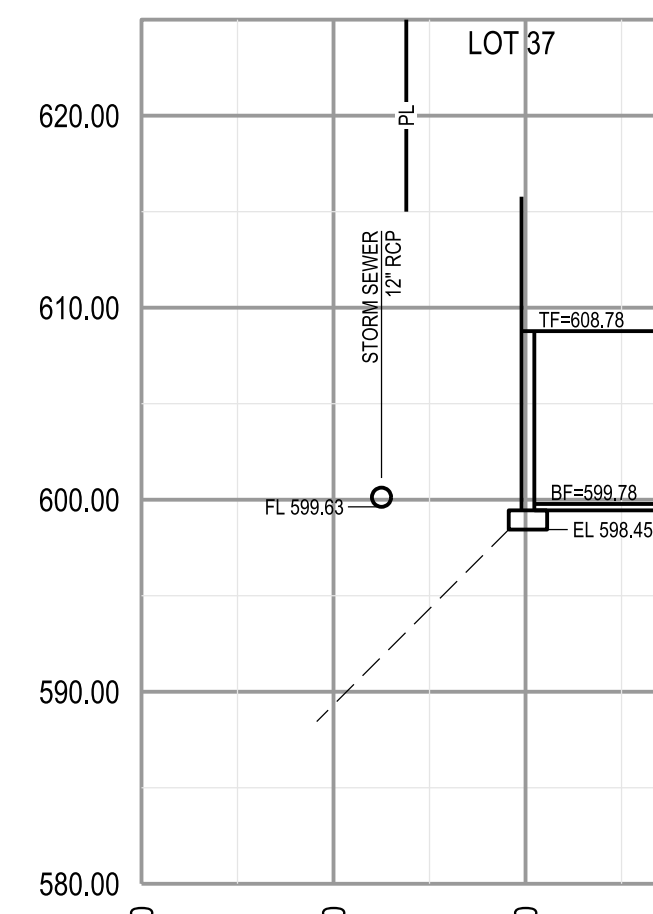
SECTION 1-1
HORIZONTAL SCALE: 1" = 10'
VERTICAL SCALE: 1" = 10'



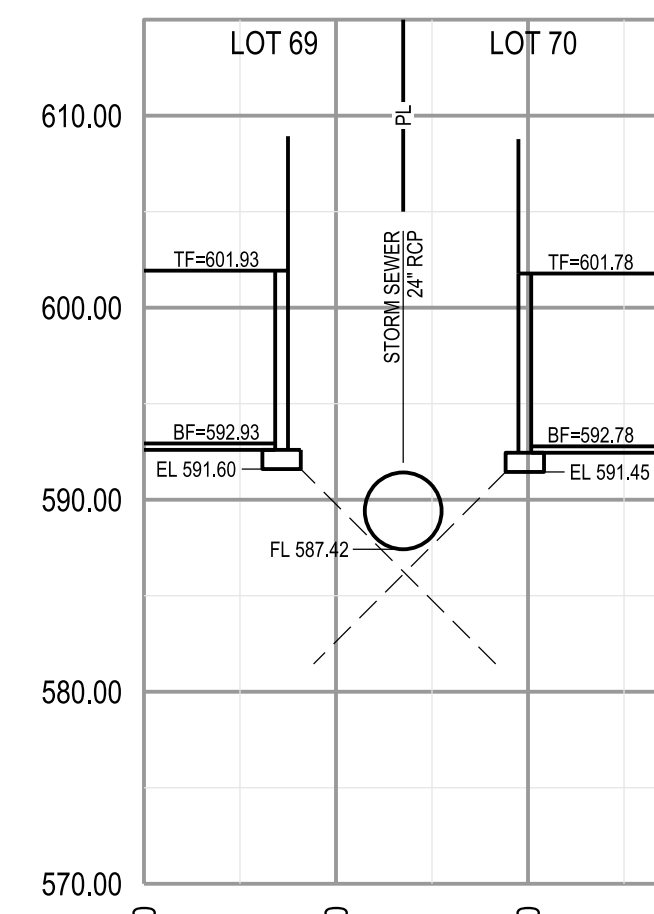
SECTION 2-2
HORIZONTAL SCALE: 1" = 10'
VERTICAL SCALE: 1" = 10'



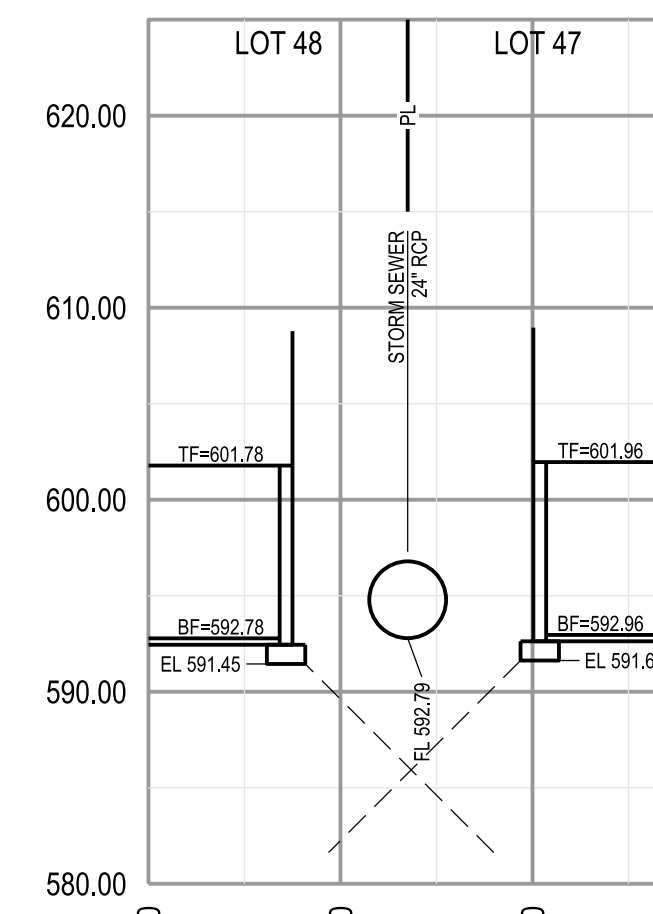
SECTION 3-3
HORIZONTAL SCALE: 1" = 10'
VERTICAL SCALE: 1" = 10'



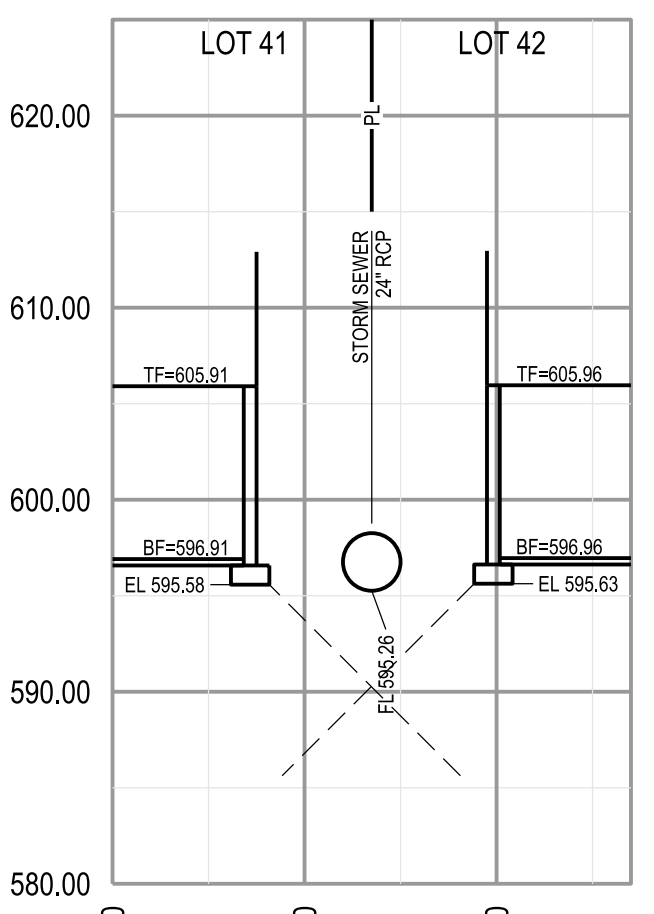
SECTION 4-4
HORIZONTAL SCALE: 1" = 10'
VERTICAL SCALE: 1" = 10'



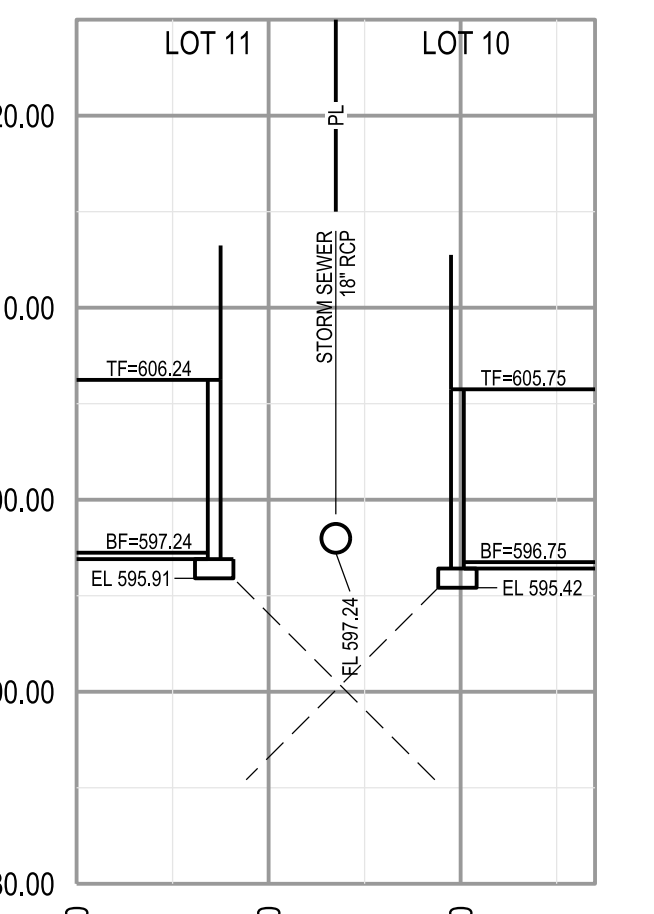
SECTION 5-5
HORIZONTAL SCALE: 1" = 10'
VERTICAL SCALE: 1" = 10'



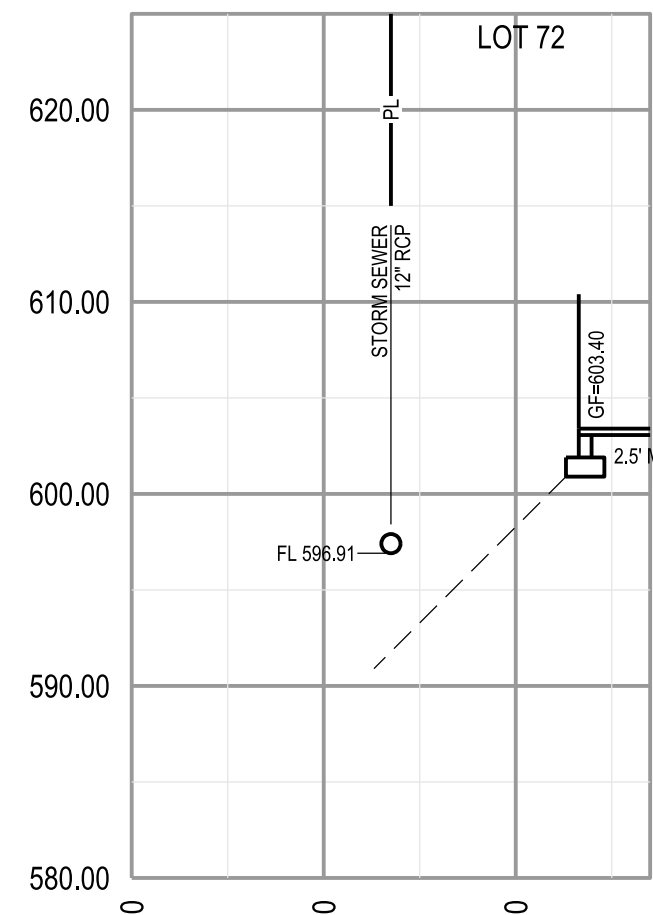
SECTION 6-6
HORIZONTAL SCALE: 1" = 10'
VERTICAL SCALE: 1" = 10'



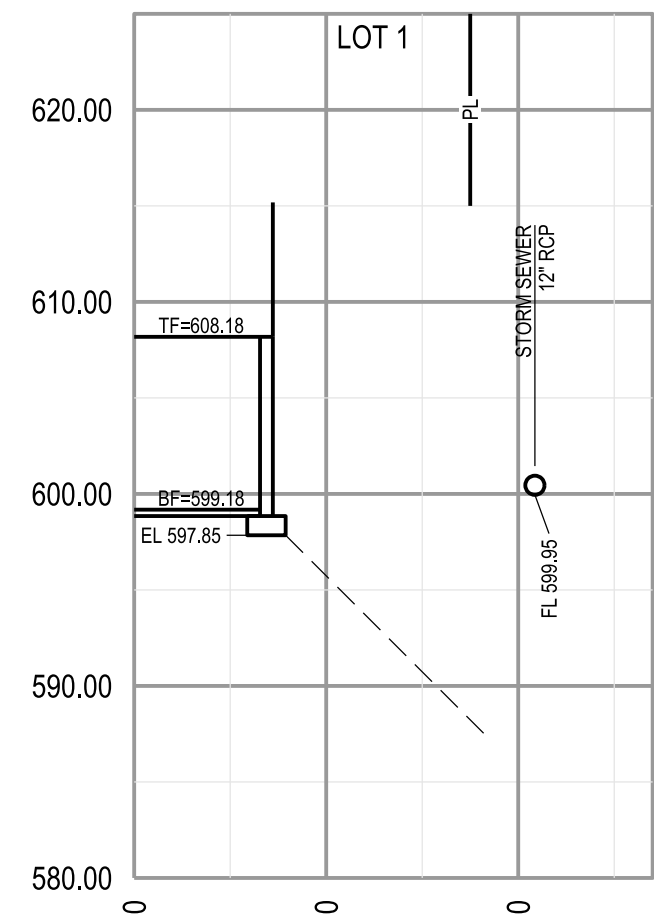
SECTION 7-7
HORIZONTAL SCALE: 1" = 10'
VERTICAL SCALE: 1" = 10'



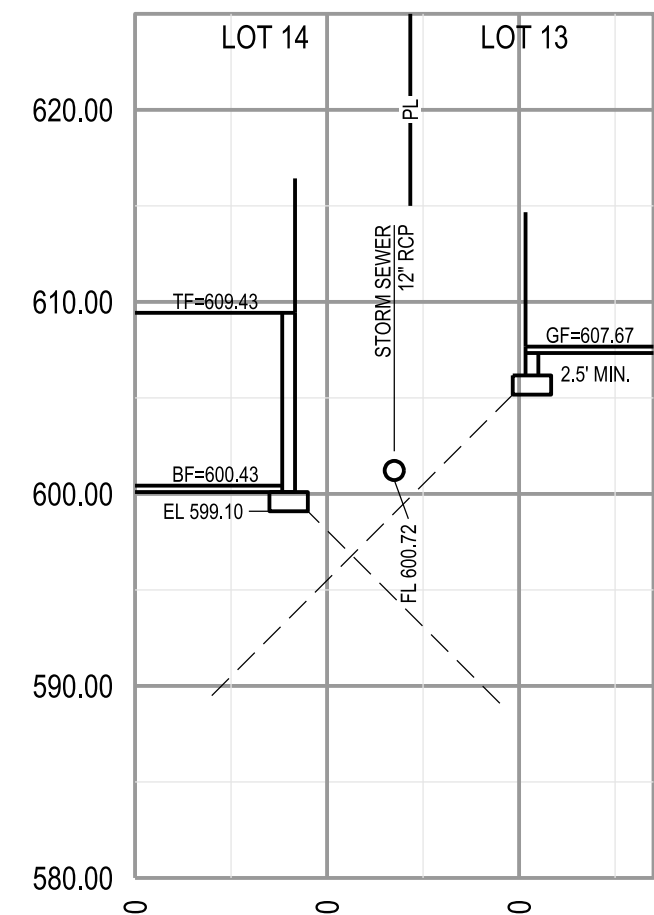
SECTION 8-8
HORIZONTAL SCALE: 1" = 10'
VERTICAL SCALE: 1" = 10'



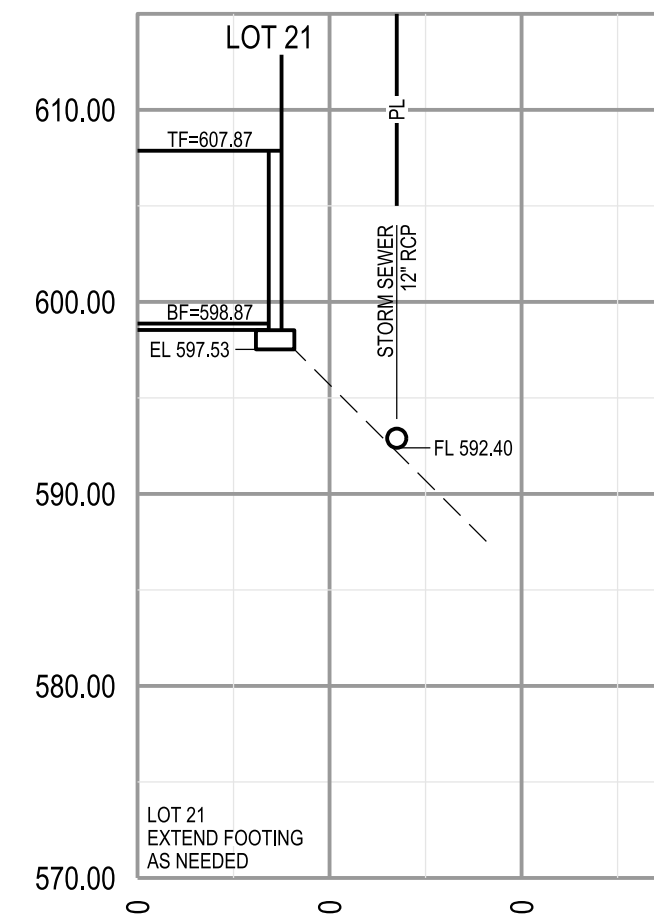
SECTION 9-9
HORIZONTAL SCALE: 1" = 10'
VERTICAL SCALE: 1" = 10'



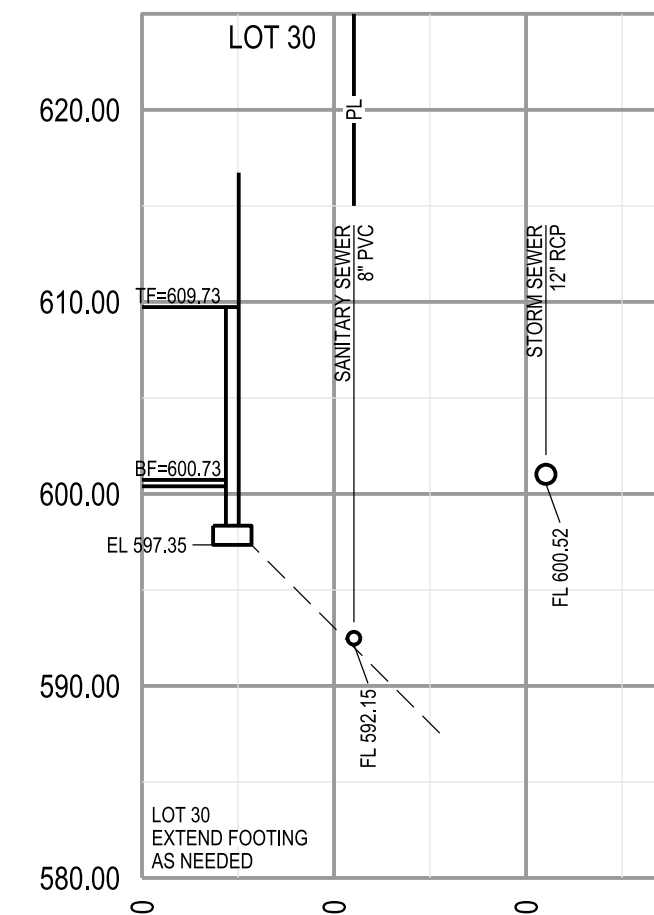
SECTION 10-10
HORIZONTAL SCALE: 1" = 10'
VERTICAL SCALE: 1" = 10'



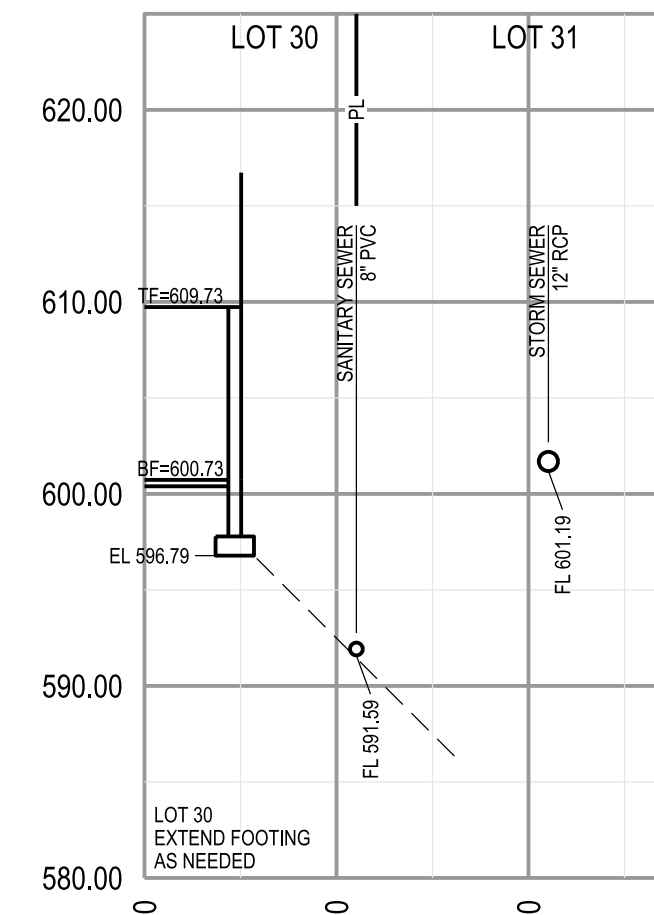
SECTION 11-11
HORIZONTAL SCALE: 1" = 10'
VERTICAL SCALE: 1" = 10'



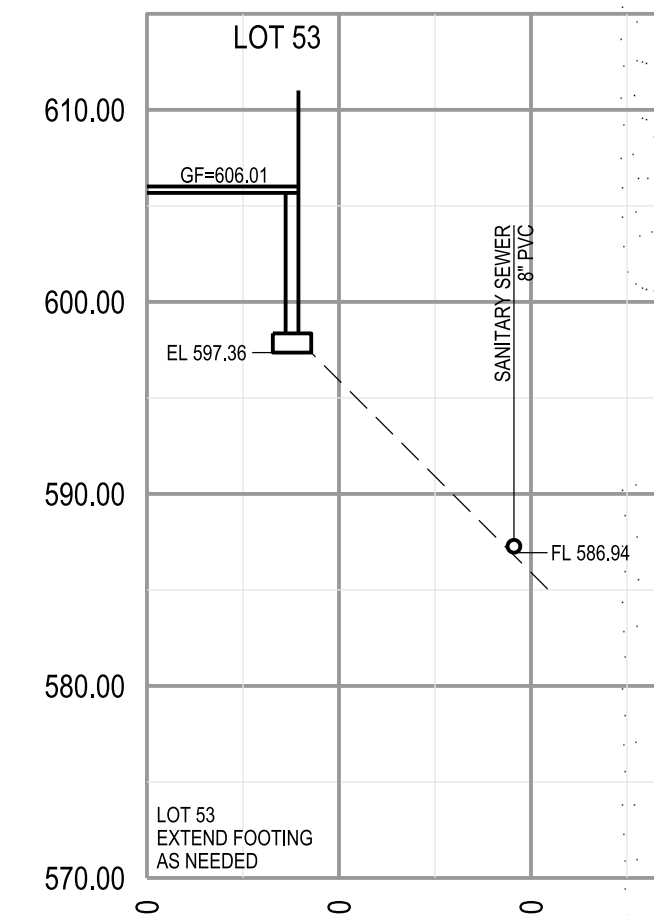
SECTION 12-12
HORIZONTAL SCALE: 1" = 10'
VERTICAL SCALE: 1" = 10'



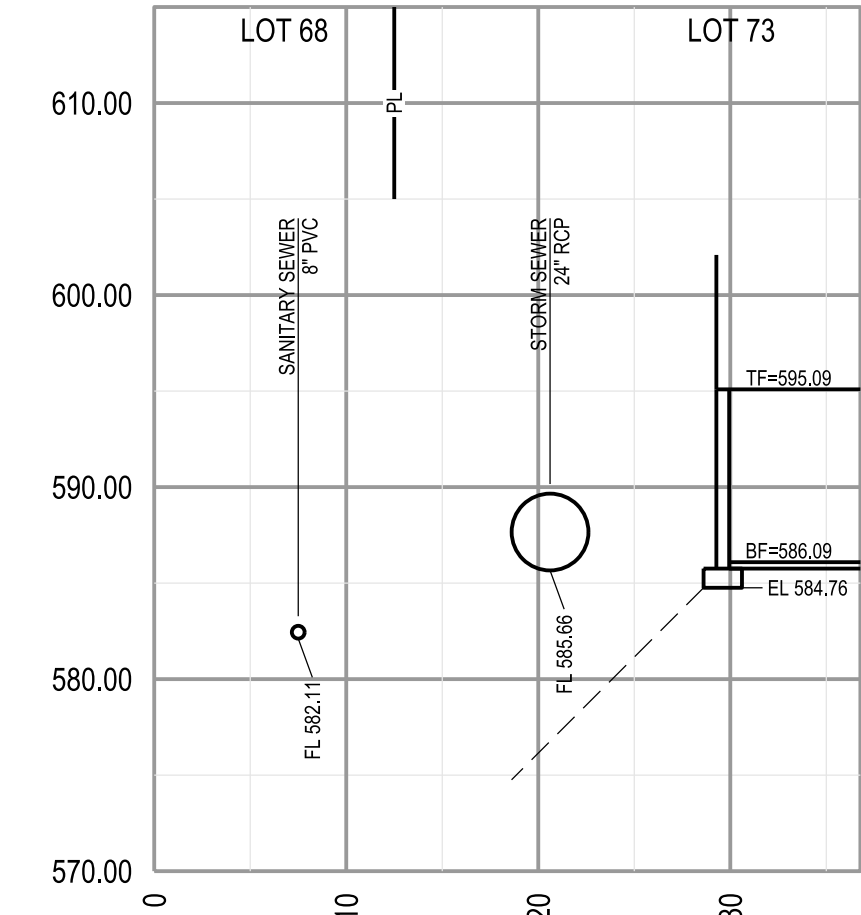
SECTION 13-13
HORIZONTAL SCALE: 1" = 10'
VERTICAL SCALE: 1" = 10'



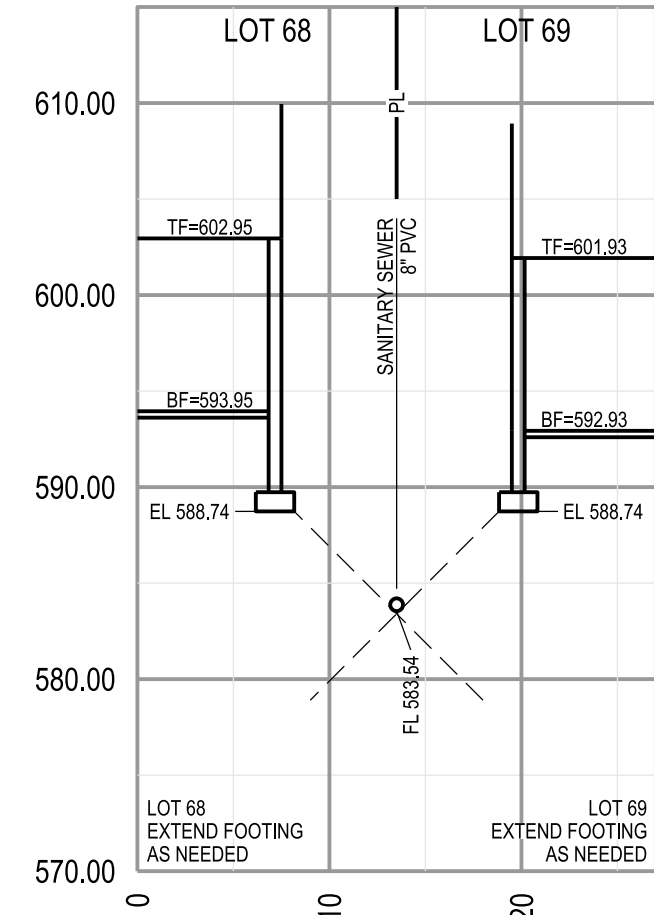
SECTION 14-14
HORIZONTAL SCALE: 1" = 10'
VERTICAL SCALE: 1" = 10'



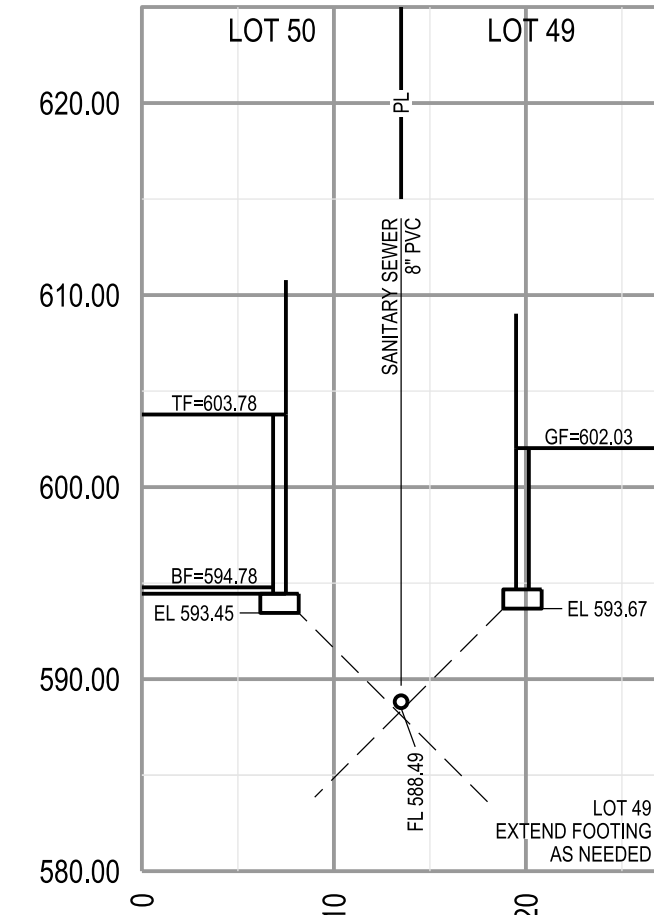
SECTION 15-15
HORIZONTAL SCALE: 1" = 10'
VERTICAL SCALE: 1" = 10'



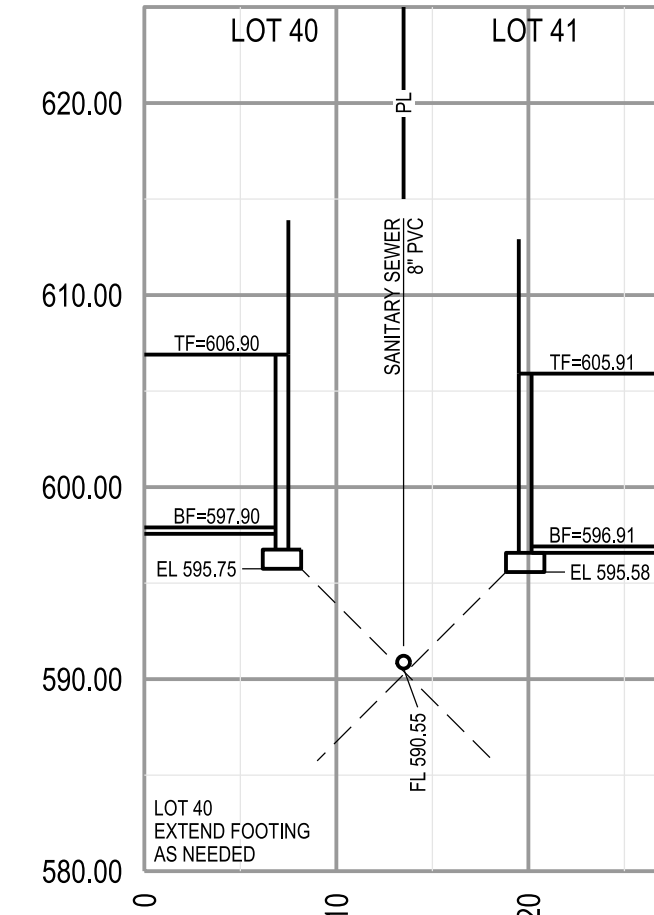
SECTION 16-16
HORIZONTAL SCALE: 1" = 10'
VERTICAL SCALE: 1" = 10'



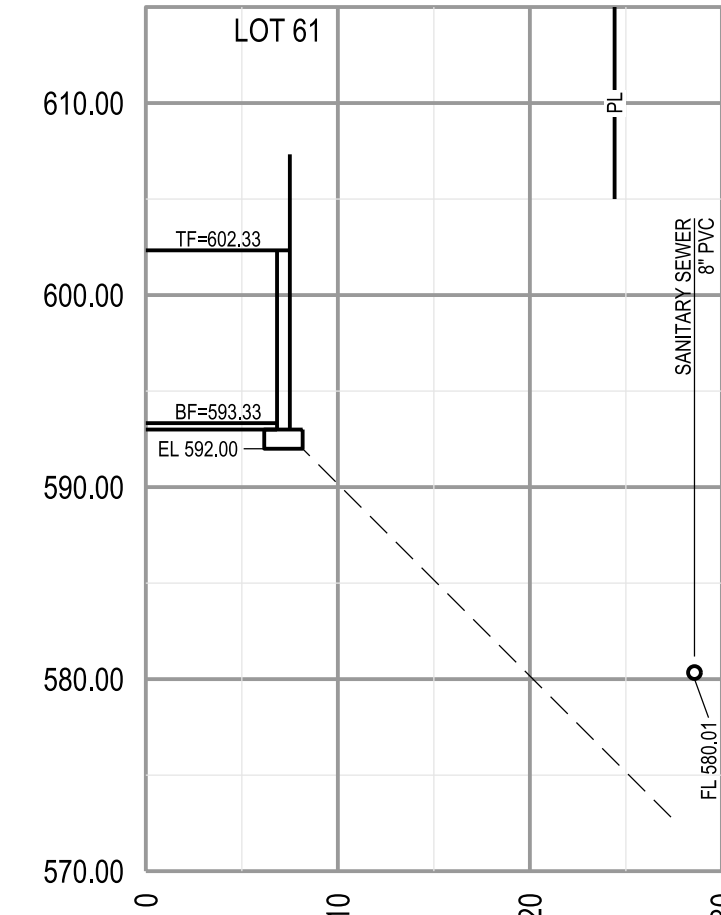
SECTION 17-17
HORIZONTAL SCALE: 1" = 10'
VERTICAL SCALE: 1" = 10'



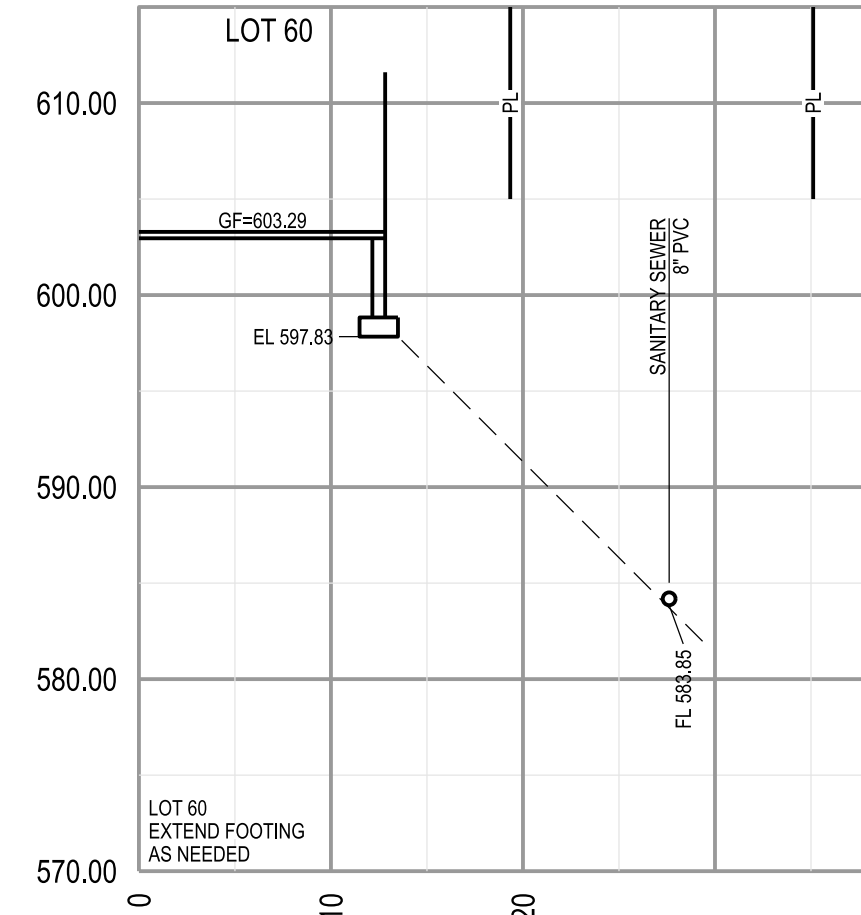
SECTION 18-18
HORIZONTAL SCALE: 1" = 10'
VERTICAL SCALE: 1" = 10'



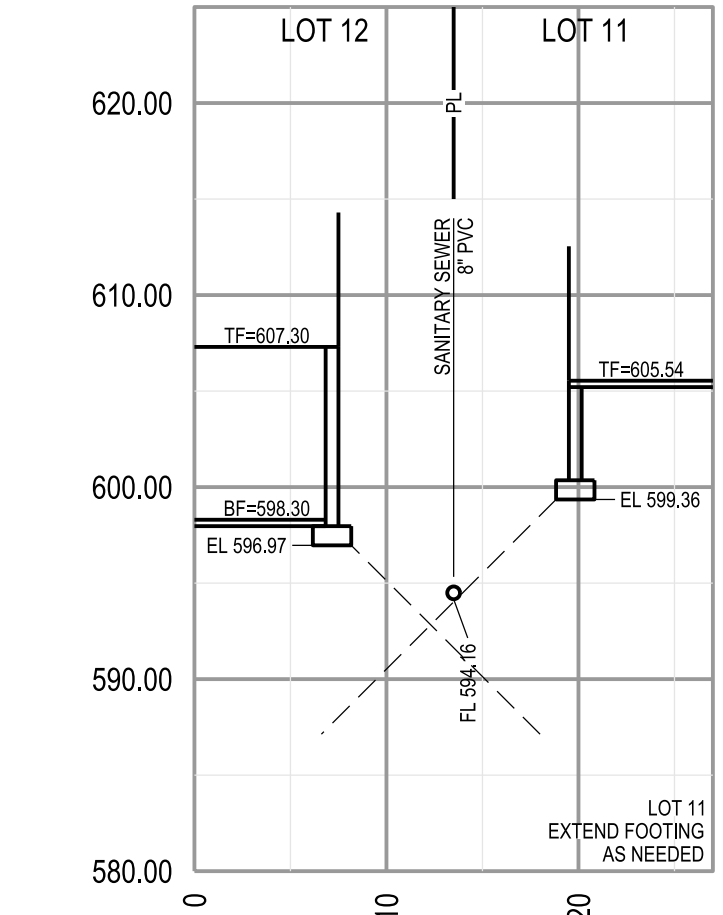
SECTION 19-19
HORIZONTAL SCALE: 1" = 10'
VERTICAL SCALE: 1" = 10'



SECTION 20-20
HORIZONTAL SCALE: 1" = 10'
VERTICAL SCALE: 1" = 10'



SECTION 21-21
HORIZONTAL SCALE: 1" = 10'
VERTICAL SCALE: 1" = 10'



SECTION 22-22
HORIZONTAL SCALE: 1" = 10'
VERTICAL SCALE: 1" = 10'

H:\CAD\22000-22999\22074\mp\Plans\22074 - C25 Sewer Influence Profiles.dgn - Default 6/29/2021 4:33:49 PM Plotted by: molmes Plot Scale: 10.0000 1/4 in. Plot Driver: volz15.pdf.plt.ctb Pen Table: Volz15.pdf.tbl

CALL MISSOURI ONE CALL SYSTEMS INC. TWO FULL WORKING DAYS IN ADVANCE OF STARTING

WORK MISSOURI ONE-CALL 1-800-344-7483

THE UNDERGROUND UTILITIES SHOWN HEREIN WERE PLOTTED FROM AVAILABLE INFORMATION AND DO NOT NECESSARILY REFLECT THE ACTUAL EXISTENCE, OR NON EXISTENCE, SIZE, TYPE, NUMBER, OR LOCATION OF THESE OR OTHER UTILITIES. THE GENERAL CONTRACTOR SHALL BE RESPONSIBLE FOR VERIFYING THE ACTUAL LOCATION OF ALL UNDERGROUND UTILITIES IN THE FIELD, SHOWN OR NOT SHOWN, PRIOR TO ANY GRADING, EXCAVATION, OR CONSTRUCTION OF IMPROVEMENTS. THESE PROVISIONS SHALL IN NO WAY ABSOLVE ANY PARTY FROM COMPLYING WITH THE UNDERGROUND FACILITY SAFETY AND DAMAGE PREVENTION ACT, CHAPTER 319, RSMO.

MCKELVEY HOMES
Building A Tradition Of Excellence Since 1888
218 Chesterfield Towne Center
Chesterfield, MO 63005
Phone: (636) 530-6800

VOLZ Incorporated
INCORPORATED
ENGINEERING ARCHITECTURE
LAND SURVEYING
TRANSPORTATION
CONSTRUCTION MANAGEMENT
10849 Indian Head Ind. Blvd.
St. Louis, Missouri 63132
314.850.1250 Fax
www.volzinc.com
Aulinity #203

STATE OF MISSOURI
REGISTERED PROFESSIONAL ENGINEER
RYAN L. HOLMES
NUMBER PE-2017018988
EXPIRES 12/31/2021
RYAN L. HOLMES
Professional Engineer
PE-2017018988

SOMMERLIN

STORM & SANITARY SEWER PIPE INFLUENCE PROFILES

Design By: R/LH
Drawn By: R/LH
Checked By: R/LH

Volz Project # 22074

06-28-21
C25