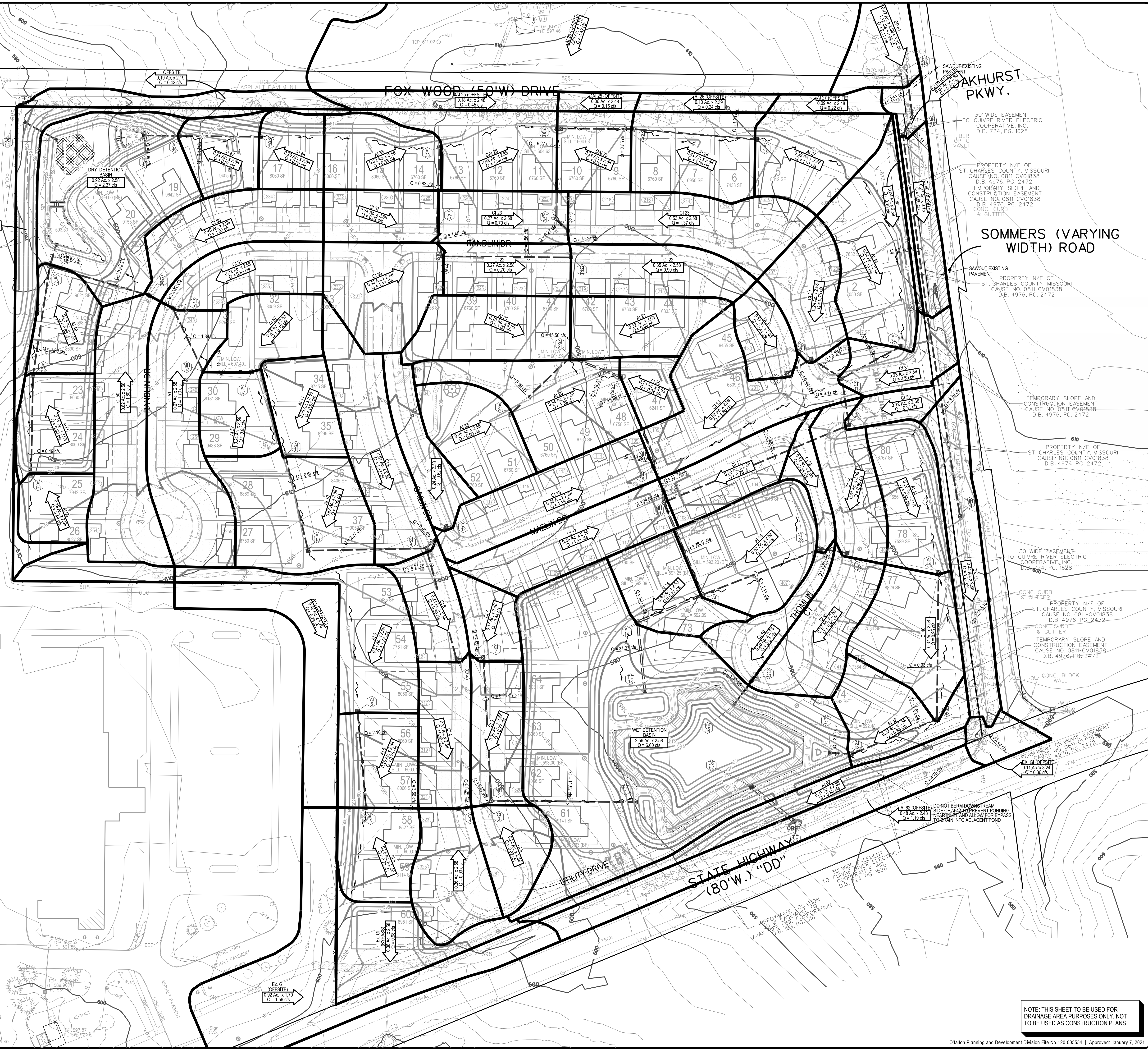


60 0 60 120 180
Scale in Feet
Scale: 1"=60'



SAW CUT EXISTING
PAVEMENT
30' WIDE EASEMENT
TO CUIVRE RIVER ELECTRIC
COOPERATIVE, INC.
D.B. 724, PG. 1628

SOMMERS (VARYING
WIDTH) ROAD

PROPERTY N/F OF
ST. CHARLES COUNTY, MISSOURI
CAUSE NO. 0811-CV01838
D.B. 4976, PG. 2472

TEMPORARY SLOPE AND
CONSTRUCTION EASEMENT
CAUSE NO. 0811-CV01838
D.B. 4976, PG. 2472

PROPERTY N/F OF
ST. CHARLES COUNTY, MISSOURI
CAUSE NO. 0811-CV01838
D.B. 4976, PG. 2472

30' WIDE EASEMENT
TO CUIVRE RIVER ELECTRIC
COOPERATIVE, INC.
D.B. 724, PG. 1628

PROPERTY N/F OF
ST. CHARLES COUNTY, MISSOURI
CAUSE NO. 0811-CV01838
D.B. 4976, PG. 2472

TEMPORARY SLOPE AND
CONSTRUCTION EASEMENT
CAUSE NO. 0811-CV01838
D.B. 4976, PG. 2472

DRAINAGE EASEMENT
CAUSE NO. 0811-CV01838
D.B. 4976, PG. 2472

PERMANENT
EX-COURSE
DRAINAGE EASEMENT
CAUSE NO. 0811-CV01838
D.B. 4976, PG. 2472

DO NOT BERM/DOWNSTREAM
SIDE OF 42" DEEP/POUNDING
NEARBY AND ALLOW FOR BYPASS
FLOW INTO ADJACENT POND

30' WIDE EASEMENT
TO CUIVRE RIVER ELECTRIC
COOPERATIVE, INC.
D.B. 724, PG. 1628

APPROXIMATE LOCATION
TO THE EAST BAY
CORPORATION
D.B. 138, PG. 116

CALL MISSOURI ONE
CALL SYSTEMS INC. TWO
FULL WORKING DAYS IN
ADVANCE OF STARTING

THE UNDERGROUND UTILITIES SHOWN HEREIN WERE PLOTTED
FROM AVAILABLE INFORMATION AND DO NOT NECESSARILY
REFLECT THE ACTUAL EXISTENCE, OR NON EXISTENCE, SIZE,
TYPE, NUMBER, OR LOCATION OF THESE OR OTHER UTILITIES.
THE GENERAL CONTRACTOR SHALL BE RESPONSIBLE FOR
VERIFYING THE ACTUAL LOCATION OF ALL UNDERGROUND
UTILITIES IN THE FIELD, SHOWN OR NOT SHOWN, PRIOR TO ANY
GRADING, EXCAVATION, OR CONSTRUCTION OF IMPROVEMENTS.
THESE PROVISIONS SHALL IN NO WAY ABSOLVE ANY PARTY
FROM COMPLYING WITH THE UNDERGROUND FACILITY SAFETY
AND DAMAGE PREVENTION ACT, CHAPTER 319, RSMO.

WORK MISSOURI
ONE-CALL 1-800-344-7483

NOTE: THIS SHEET TO BE USED FOR
DRAINAGE AREA PURPOSES ONLY, NOT
TO BE USED AS CONSTRUCTION PLANS.

MCKELVEY
H O M E S
Building A Tradition Of Excellence Since 1888
218 Chesterfield Towne Center
Chesterfield, MO 63005
Phone: (636) 530-6800

VOLZ
INCORPORATED
10849 Indian Head Indl. Blvd.
St. Louis, Missouri 63132
314.950.1250 Fax
www.volzinc.com
Arlinity #203

RYAN L. HOLMES
Professional Engineer
PE-2017018988

SOMMERLIN

PROPOSED DRAINAGE
AREA MAP

Design By: R/LH
Drawn By: R/LH
Checked By: R/LH

06-28-21
C27

Volz Project # 22074

H:\CAD\22000-22999\22074\MapPlans\22074_C27_Proposed Drainage Area Plan.dgn - Default - 6/30/2021 10:05:40 AM Plotted by: rhomes Plot Scale: 60.0000 sf / in. Plot Driver: volz15.pdf.plt.ctb Pen Table: volz15_PDF.tbl