

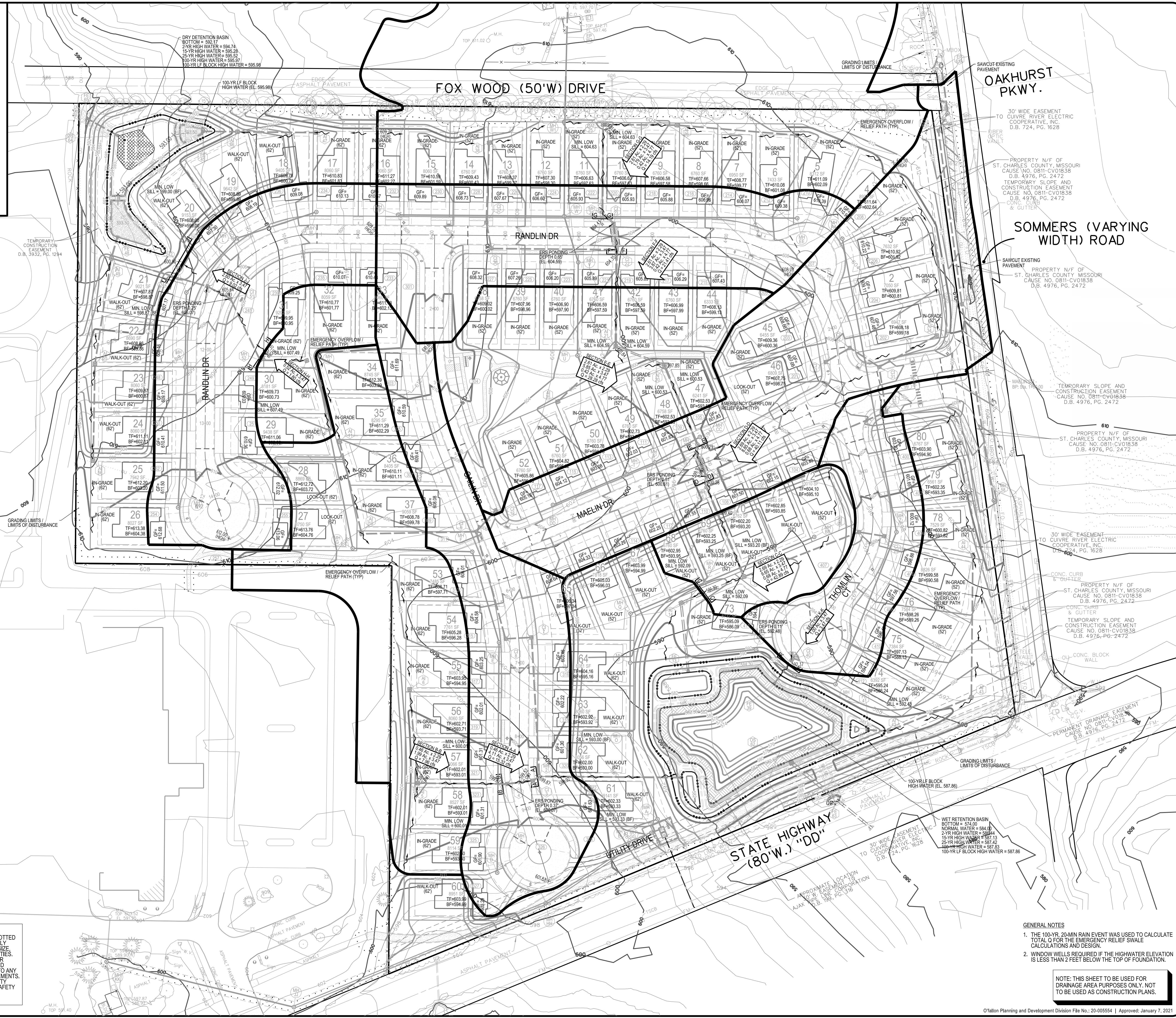
Scale in Feet  
Scale: 1"=60'

H:\CAD\22000-22999\22074\MapPlans\22074 - C28 Emergency Relief From Drainage Area Map.dgn - Default 6/30/2021 10:06:48 AM Plotted by rnomes Plot Scale: 60.00000 sf / in Plot Driver: volz15.pdf.plt.ctb Pen Table: volz15.pdf.ctb

CALL MISSOURI ONE CALL SYSTEMS INC. TWO FULL WORKING DAYS IN ADVANCE OF STARTING

THE UNDERGROUND UTILITIES SHOWN HEREIN WERE PLOTTED FROM AVAILABLE INFORMATION AND DO NOT NECESSARILY REFLECT THE ACTUAL EXISTENCE, OR NON EXISTENCE, SIZE, TYPE, NUMBER, OR LOCATION OF THESE OR OTHER UTILITIES. THE GENERAL CONTRACTOR SHALL BE RESPONSIBLE FOR VERIFYING THE ACTUAL LOCATION OF ALL UNDERGROUND UTILITIES IN THE FIELD, SHOWN OR NOT SHOWN, PRIOR TO ANY GRADING, EXCAVATION OR CONSTRUCTION OR IMPROVEMENTS. THESE PROVISIONS SHALL IN NO WAY ABSOLVE ANY PARTY FROM COMPLYING WITH THE UNDERGROUND FACILITY SAFETY AND DAMAGE PREVENTION ACT, CHAPTER 319, RSMO.

WORK MISSOURI ONE-CALL 1-800-344-7483



SOMMERS (VARYING WIDTH) ROAD

OAKHURST PKWY.

STATE HIGHWAY (80'W.) "DD"

FOX WOOD (50'W) DRIVE

RANDLIN DR

MAELIN DR

THOMLIN CT

UTILITY DRIVE

30' WIDE EASEMENT TO CUIVRE RIVER ELECTRIC COOPERATIVE, INC. D.B. 724, PG. 1628

PROPERTY N/F OF ST. CHARLES COUNTY, MISSOURI CAUSE NO. 0811-CV01838 D.B. 4976, PG. 2472

PROPERTY N/F OF ST. CHARLES COUNTY, MISSOURI CAUSE NO. 0811-CV01838 D.B. 4976, PG. 2472

PROPERTY N/F OF ST. CHARLES COUNTY, MISSOURI CAUSE NO. 0811-CV01838 D.B. 4976, PG. 2472

PROPERTY N/F OF ST. CHARLES COUNTY, MISSOURI CAUSE NO. 0811-CV01838 D.B. 4976, PG. 2472

PROPERTY N/F OF ST. CHARLES COUNTY, MISSOURI CAUSE NO. 0811-CV01838 D.B. 4976, PG. 2472

- GENERAL NOTES
1. THE 100-YR. 20-MIN RAIN EVENT WAS USED TO CALCULATE TOTAL Q FOR THE EMERGENCY RELIEF SWALE CALCULATIONS AND DESIGN.
  2. WINDOW WELLS REQUIRED IF THE HIGHWATER ELEVATION IS LESS THAN 2 FEET BELOW THE TOP OF FOUNDATION.

NOTE: THIS SHEET TO BE USED FOR DRAINAGE AREA PURPOSES ONLY. NOT TO BE USED AS CONSTRUCTION PLANS.

**MCKELVEY HOMES**  
Building A Tradition Of Excellence Since 1888  
218 Chesterfield Towne Center  
Chesterfield, MO 63005  
Phone: (636) 530-6800

**VOLZ** Incorporated  
10849 Indian Head Indl. Blvd.  
St. Louis, Missouri 63132  
314.950.1250 Fax  
www.volzinc.com  
Arlinity #203

**RYAN L. HOLMES**  
Professional Engineer  
PE-2017018988

**SOMMERLIN**

EMERGENCY RELIEF PATH DRAINAGE AREA MAP

Design By: R/LH  
Drawn By: R/LH  
Checked By: R/LH

06-28-21  
C28

Vote Project # 22074

©Fallon Planning and Development Division File No.: 20-00554 | Approved: January 7, 2021