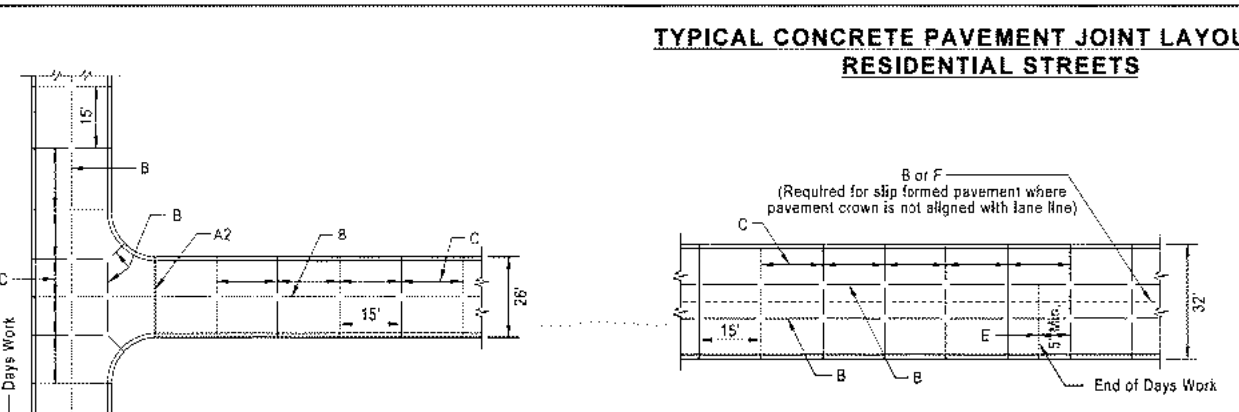


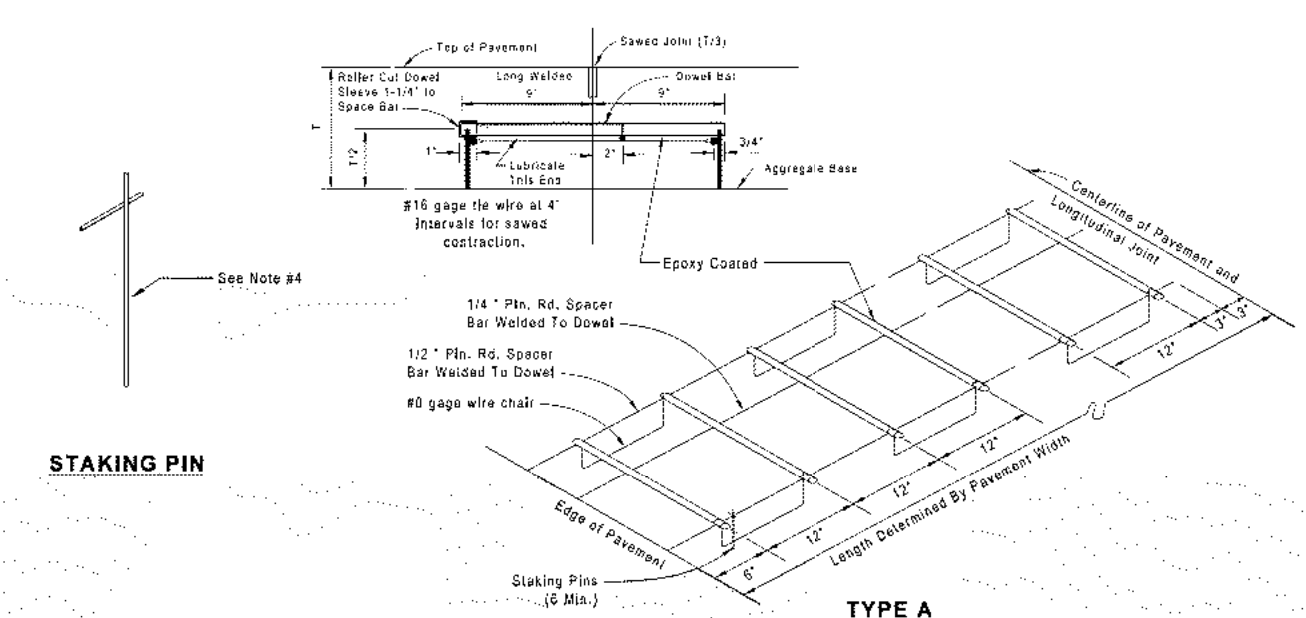
- GENERAL NOTES**
- 1) Do not scale drawings, follow dimensions.
 - 2) Sections shown are symmetrical about construction line.
 - 3) All necessary pavement markings shall be as required by St. Louis County. For details refer to "Guide Lines for Pavement Markings and Lane Striping", Standard Drawing C502.10.
 - 4) Sidewalk thickness increases to 6" at through driveway entrances and for the first section of sidewalk on each side of the driveway entrance.
 - 5) Easements, when required, shall be established as a "Permanent Roadway Improvement, Maintenance, Utility, Sewer and Sidewalk Easement", and dedicated to St. Louis County.

DATE	REVISION	THIS IS NOT A CERTIFIED DOCUMENT	STANDARD DRAWING RESIDENTIAL STREET JOINT LAYOUT (TYPE 1 & 2)
05/01/2020	1 OF 1		DRAWING C203.02



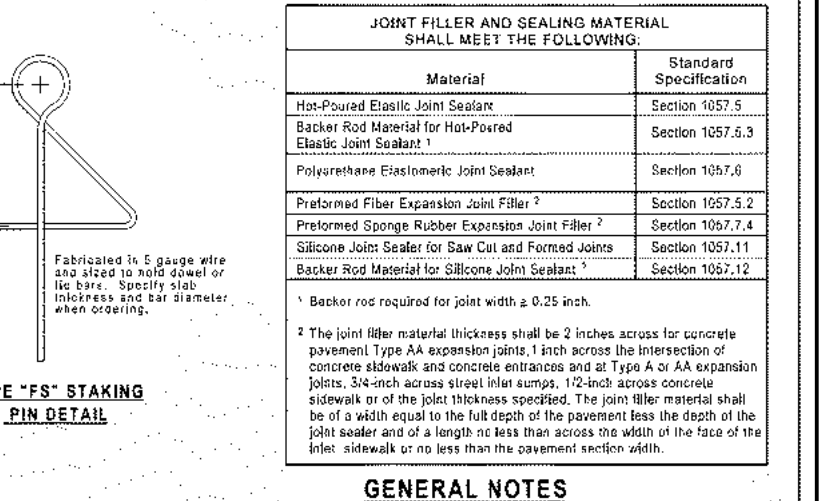
- GENERAL NOTES**
- 1) Do not scale drawing, follow dimensions.
 - 2) The joint layouts shown correspond with the Department's standard typical sections. The actual locations of longitudinal construction joints shall be set to align with the lane lines or approved construction plan.
 - 3) Joint layout within intersections shall be adjusted as necessary to accommodate the intersection channelization details in the approved construction plan.
 - 4) Construction joints and tie bars associated with curb construction may be omitted when curb is poured monolithic with pavement.
 - 5) For joint and bar requirements refer to the "Pavement Construction Details - Joints" (Standard Drawing C502.13) and "Pavement Construction Details - Curb" (Standard Drawing C502.14). Note that the width and location may change the type of joint required.
 - 6) Transverse or longitudinal construction joints in slip formed pavements may be made with a groover or foot. If such device has been approved in advance by the Department.
 - 7) When a joint falls within 5ft. of, or contacts, inlets, manholes, or other structures, shorten one or more panels either side of opening to permit joint to fall on round structures and/or between corners of rectangular structures.
 - 8) All street inlets shall be separated from the pavement and curb by expansion joint material extending completely through curb and slab. Washout casing within the pavement limits shall be boxed as shown.

DATE	REVISION	THIS IS NOT A CERTIFIED DOCUMENT	STANDARD DRAWING CONCRETE PAVEMENT JOINT LAYOUT RESIDENTIAL STREETS
05/01/2020	1 OF 1		DRAWING C502.01



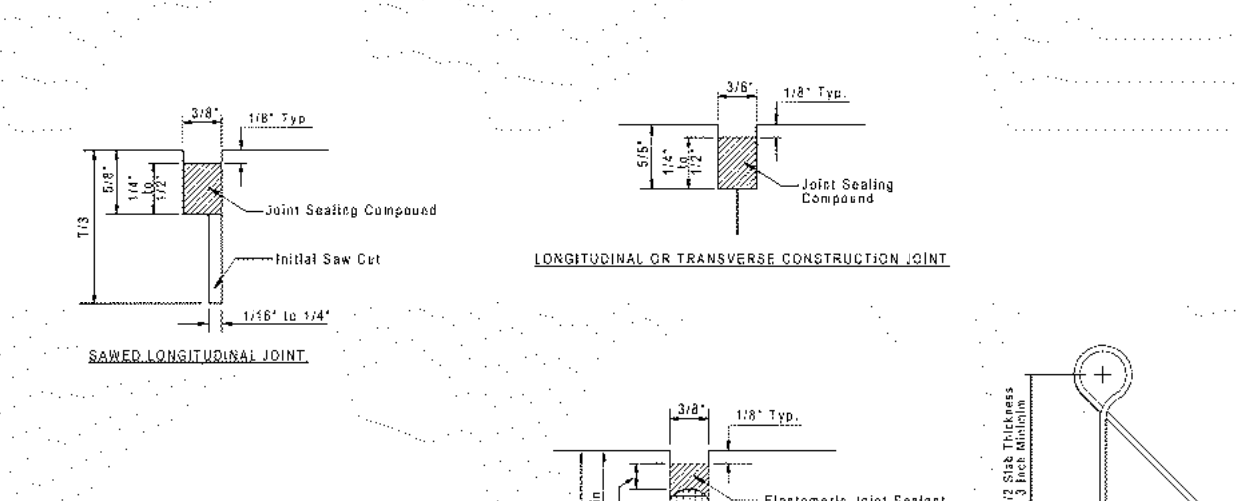
- GENERAL NOTES**
- 1) Do not scale drawing, follow dimensions.
 - 2) Approved for use with transverse joints.
 - 3) The dowel supporting units shall be factory assembled and capable of holding the dowels in their required positions. In the completed joint installation, no dowels shall vary from their required position more than 1/8 inch in 30 inches.
 - 4) The dowel bar spacing shall be 12 inches on centers. Secondary bars 8 inches from outer edge of the pavement.
 - 5) Dowel supporting pins shall be fabricated from #10 gauge (2.00 inch) wire with suitable welded hook. Staking pins shall have a minimum length of 12 inches. Type A or Type B assemblies shall be provided unless approved in advance by the engineer. Staking pins shall be placed at each corner of the staking assembly and at the mid-point of each side of the staking assembly.
 - 6) Wash, bars, or clips shall be used as necessary to strengthen the assemblies.
 - 7) Minor variations in the configuration of the support units will be allowed.
 - 8) The free end of the dowel bar for a length of at least 11 inches (2.80 inch) shall have suitable welded hook. Staking pins shall have a minimum length of 12 inches. Type A or Type B assemblies shall be provided unless approved in advance by the engineer. Staking pins shall be placed at each corner of the staking assembly and at the mid-point of each side of the staking assembly.

PAVEMENT CONSTRUCTION DETAILS	DOWEL SUPPORTING UNITS		
DATE	REVISION	THIS IS NOT A CERTIFIED DOCUMENT	STANDARD DRAWING DOWEL SUPPORTING UNITS
05/01/2020	1 OF 1		DRAWING C502.11



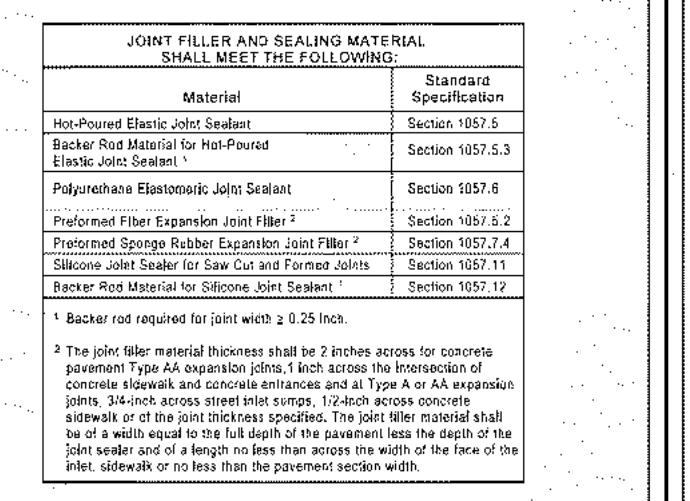
- GENERAL NOTES**
- 1) Do not scale drawing, follow dimensions.
 - 2) All materials shall be in accordance with Section 1037.4 of the "St. Louis County Standard Specifications" manual.
 - 3) Transverse or longitudinal construction joints in slip formed pavements may be made with a groover or foot, if such device has been approved in advance by the Department.

DATE	REVISION	THIS IS NOT A CERTIFIED DOCUMENT	STANDARD DRAWING CONCRETE JOINTS
05/01/2020	1 OF 2		DRAWING C502.13



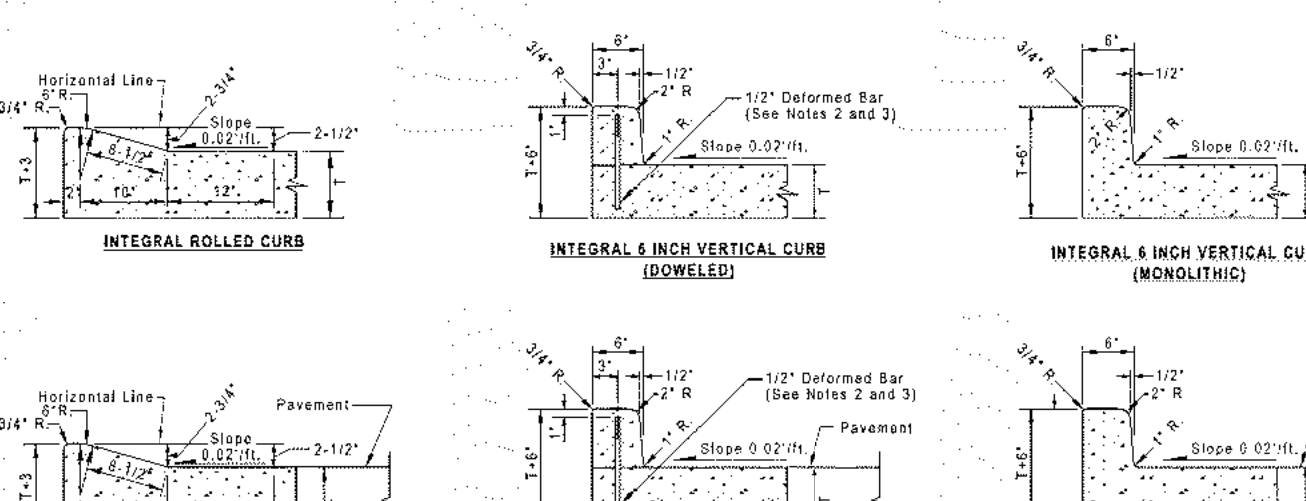
- GENERAL NOTES**
- 1) Do not scale drawing, follow dimensions.
 - 2) All materials shall be in accordance with Section 1037.4 of the "St. Louis County Standard Specifications" manual.
 - 3) Transverse or longitudinal construction joints in slip formed pavements may be made with a groover or foot, if such device has been approved in advance by the Department.

DATE	REVISION	THIS IS NOT A CERTIFIED DOCUMENT	STANDARD DRAWING CONCRETE JOINTS
05/01/2020	2 OF 2		DRAWING C502.13



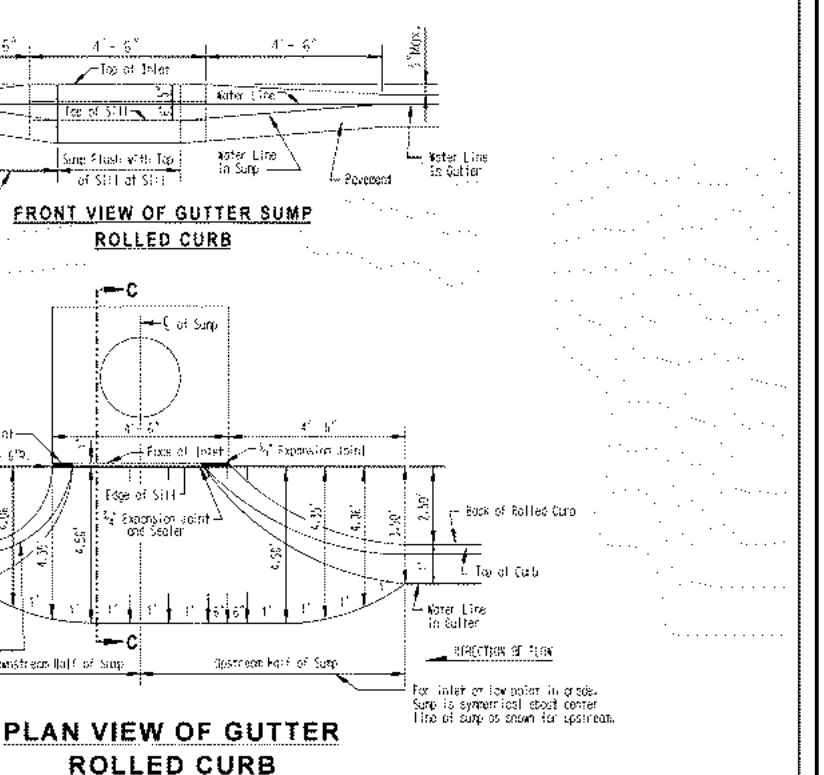
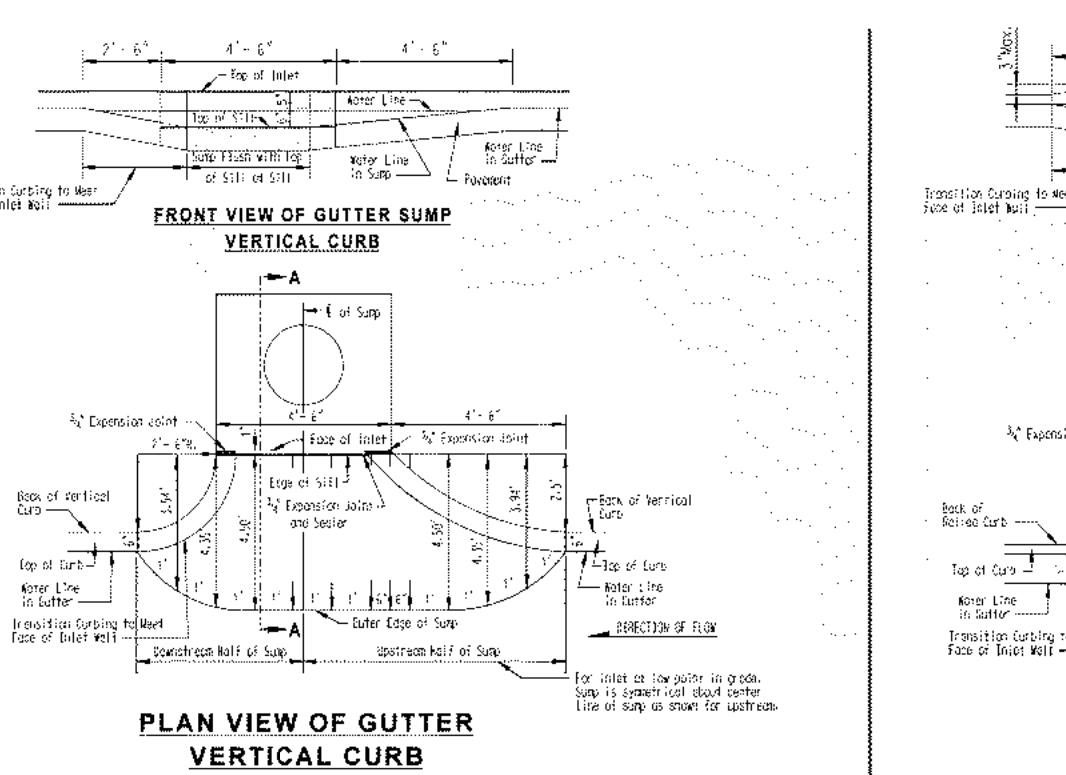
- GENERAL NOTES**
- 1) Do not scale drawing, follow dimensions.
 - 2) All materials shall be in accordance with Section 1037.4 of the "St. Louis County Standard Specifications" manual.
 - 3) Transverse or longitudinal construction joints in slip formed pavements may be made with a groover or foot, if such device has been approved in advance by the Department.

DATE	REVISION	THIS IS NOT A CERTIFIED DOCUMENT	STANDARD DRAWING CONCRETE JOINTS
05/01/2020	2 OF 2		DRAWING C502.13



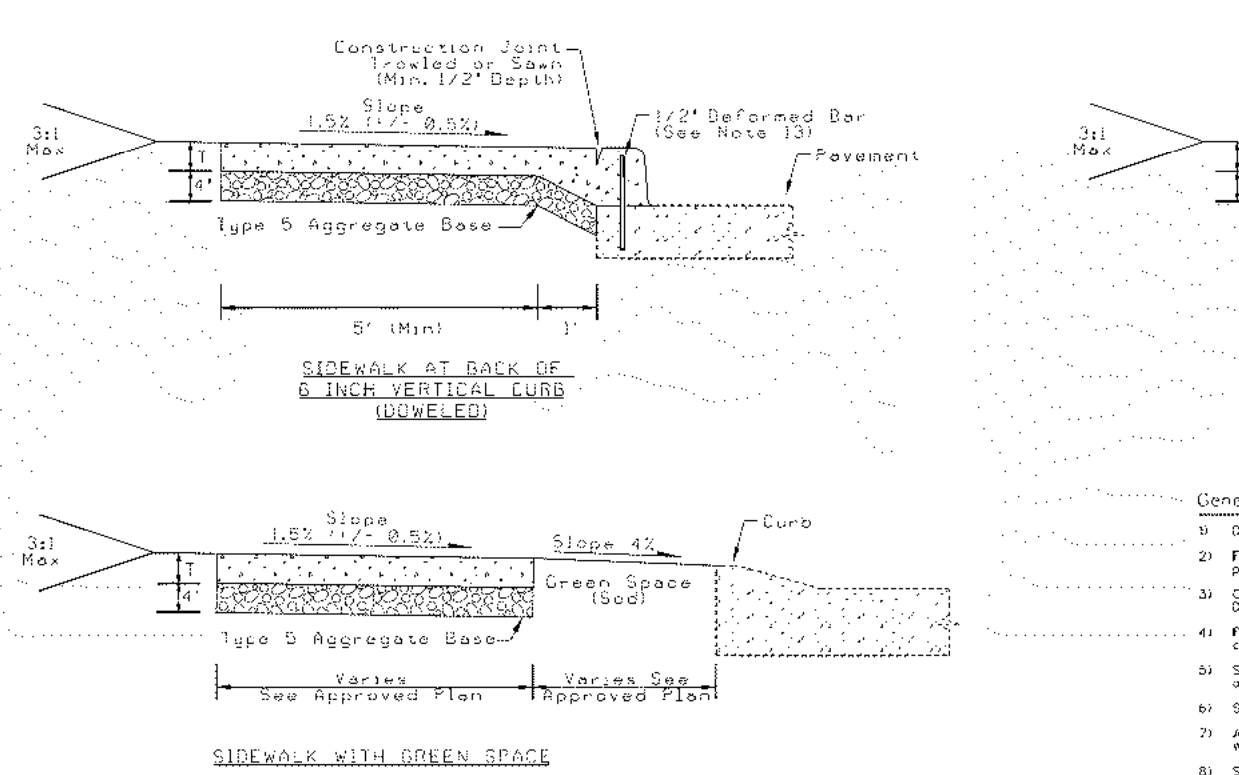
- GENERAL NOTES**
- 1) Do not scale drawing, follow dimensions.
 - 2) Construction joint and tie bars may be omitted when curb is poured integral with pavement.
 - 3) Length of tie bars shall be equal to the thickness of pavement plus the height of curb less 3 inches. The bars shall be spaced at 24 inch centers.
 - 4) All deformed bars for joints and curbs shall be in accordance with Section 1037.4 of the "St. Louis County Standard Specifications" manual.
 - 5) Transverse or longitudinal construction joints in slip formed pavements may be made with a groover or foot, if such device has been approved in advance by the Department.
 - 6) Certain streets will be required to carry the gutter with 2 inch of asphalt as directed by the Department. Curb height shall be adjusted to maintain the standard curb height. Asphalt material type to be determined by the Department.
 - 7) Type "B" joint 1/4 inch deep.
 - 8) If the Contractor elects to construct concrete pavement by slip-form method in accordance with Section 1037.4, the width of the aggregate base on the class shall be increased to provide a 3 inch width outside the edge of the pavement being placed.
 - 9) Type "B" curb shall only be used where repair of existing Type "B" curb is required, and only with Departmental approval.
 - 10) 6" mountable curb shall only be used where repair of existing 6" mountable curb is required. Use of 6" mountable curb for other applications requires Departmental approval.

DATE	REVISION	THIS IS NOT A CERTIFIED DOCUMENT	STANDARD DRAWING CONCRETE CURB DETAILS
05/01/2020	1 OF 1		DRAWING C502.14



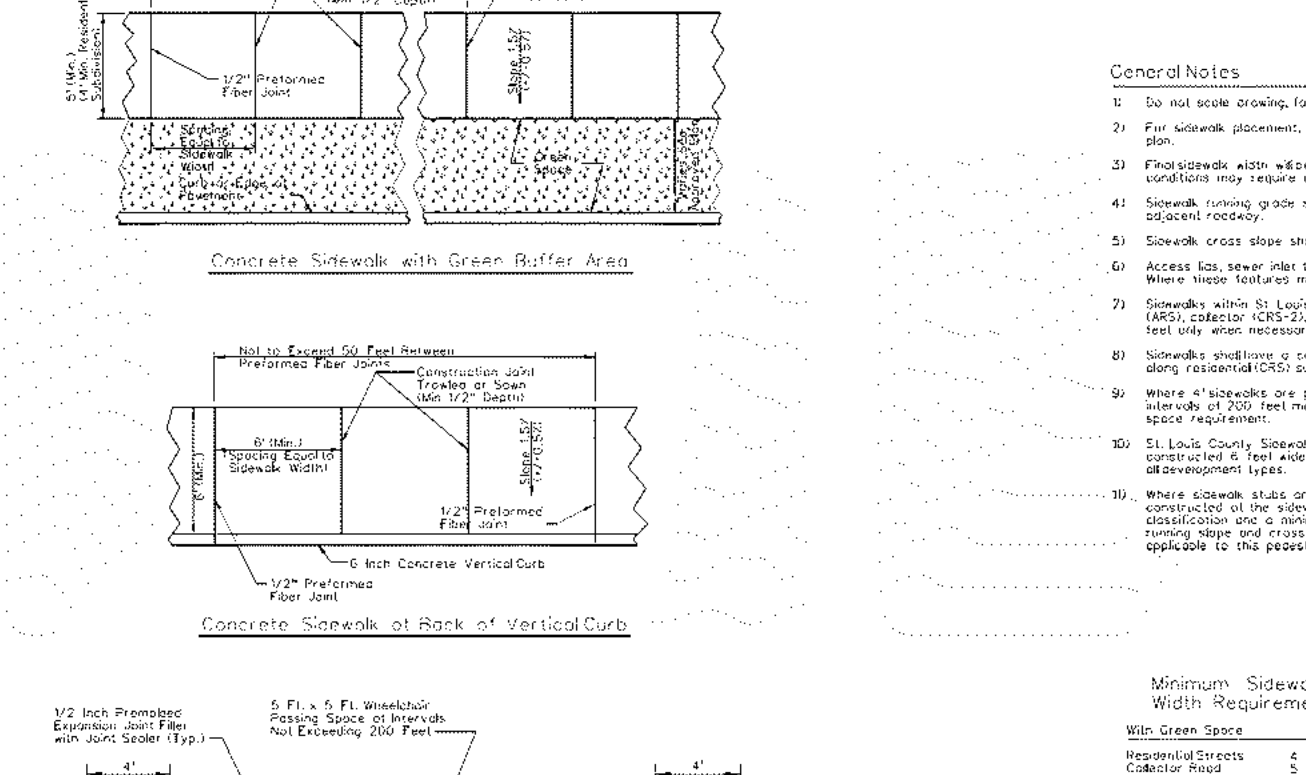
- GENERAL NOTES**
- 1) Do not scale drawing, follow dimensions.
 - 2) Curb and inlet sumps may be modified due to field conditions.
 - 3) All expansion joints shall be sealed.
 - 4) Inlet structure shall be constructed in accordance with the current St. Louis Metropolitan Sewer District Standard Construction Specifications for Sewer and Drainage Facilities manual.

DATE	REVISION	THIS IS NOT A CERTIFIED DOCUMENT	STANDARD DRAWING SEWER CONSTRUCTION DETAILS - STREET INLET SUMPS
05/01/2020	1 OF 2		DRAWING C504.38



- GENERAL NOTES**
- 1) Do not scale drawing, follow dimensions.
 - 2) For sidewalk placement, see the appropriate specification standard drawing or approved plan.
 - 3) Curb joint dimensions shall be in accordance with the Department's standard typical sections.
 - 4) Sidewalk shall be placed by the engineer during the pour process. Site conditions may require a wider sidewalk width than the minimum shown on this drawing.
 - 5) Sidewalk running cross street shall exceed 50 except where matching the running grade of the adjacent roadway.
 - 6) Sidewalk cross slope shall not exceed 1.5% (1/4"=1'-0") in the direction of pedestrian travel.
 - 7) Sidewalk shall be placed in the direction of pedestrian travel.
 - 8) Sidewalk shall be placed in the direction of pedestrian travel.
 - 9) Sidewalk shall be placed in the direction of pedestrian travel.
 - 10) Sidewalk shall be placed in the direction of pedestrian travel.

DATE	REVISION	THIS IS NOT A CERTIFIED DOCUMENT	STANDARD DRAWING SIDEWALK
05/01/2020	1 OF 3		DRAWING C608.43



- GENERAL NOTES**
- 1) Do not scale drawing, follow dimensions.
 - 2) For sidewalk placement, see the appropriate specification standard drawing or approved plan.
 - 3) Curb joint dimensions shall be in accordance with the Department's standard typical sections.
 - 4) Sidewalk shall be placed by the engineer during the pour process. Site conditions may require a wider sidewalk width than the minimum shown on this drawing.
 - 5) Sidewalk running cross street shall exceed 50 except where matching the running grade of the adjacent roadway.
 - 6) Sidewalk cross slope shall not exceed 1.5% (1/4"=1'-0") in the direction of pedestrian travel.
 - 7) Sidewalk shall be placed in the direction of pedestrian travel.
 - 8) Sidewalk shall be placed in the direction of pedestrian travel.
 - 9) Sidewalk shall be placed in the direction of pedestrian travel.
 - 10) Sidewalk shall be placed in the direction of pedestrian travel.

DATE	REVISION	THIS IS NOT A CERTIFIED DOCUMENT	STANDARD DRAWING SIDEWALK
05/01/2020	2 OF 3		DRAWING C608.43

DATE	REVISION	THIS IS NOT A CERTIFIED DOCUMENT	STANDARD DRAWING SIDEWALK
05/01/2020	2 OF 3		DRAWING C608.43

MCKELVEY HOMES
Building A Tradition of Excellence Since 1888
218 Chestfield Terrace, Chesterfield, MO 63005
Phone: (636) 530-9800

VOLZ INCORPORATED
Professional Engineer
10849 Indian Head Blvd., Suite 100, Missouri 63132
St. Louis, Missouri 63132
Phone: (314) 850-1250 Fax: (314) 850-1251
www.volzinc.com
Lic. No. 000000000
Arlinity #203

RYAN L. HOLMES
Professional Engineer
PE-2017018988
PE-2017018988

SOMMERLIN

CONSTRUCTION DETAILS: SHEET 1

Design By: R/LH
Drawn By: R/LH
Checked By: R/LH

08-28-21
C30

Volz Project # 2074

H:\CAD\22000-22999\22074\22074.dwg - CSD Construction Details Sheet Ldgn - Default - 6/29/2021 4:47:52 PM - Plotted by rholmes - Plot Scale: 1:0000 - sf - in - Plot Driver: volz15.pdf.ctb - Plot Table: volz15.pdf.ctb