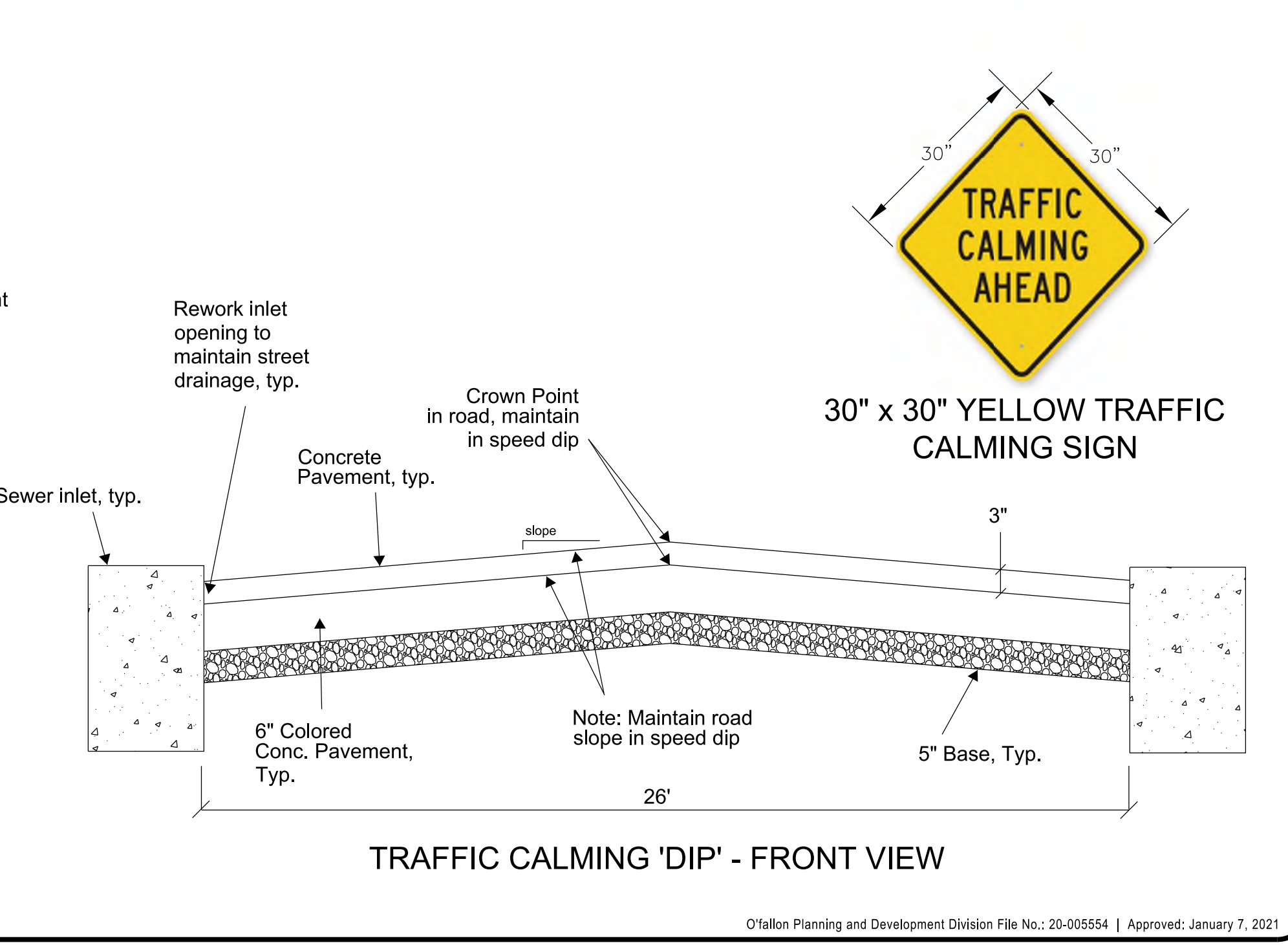
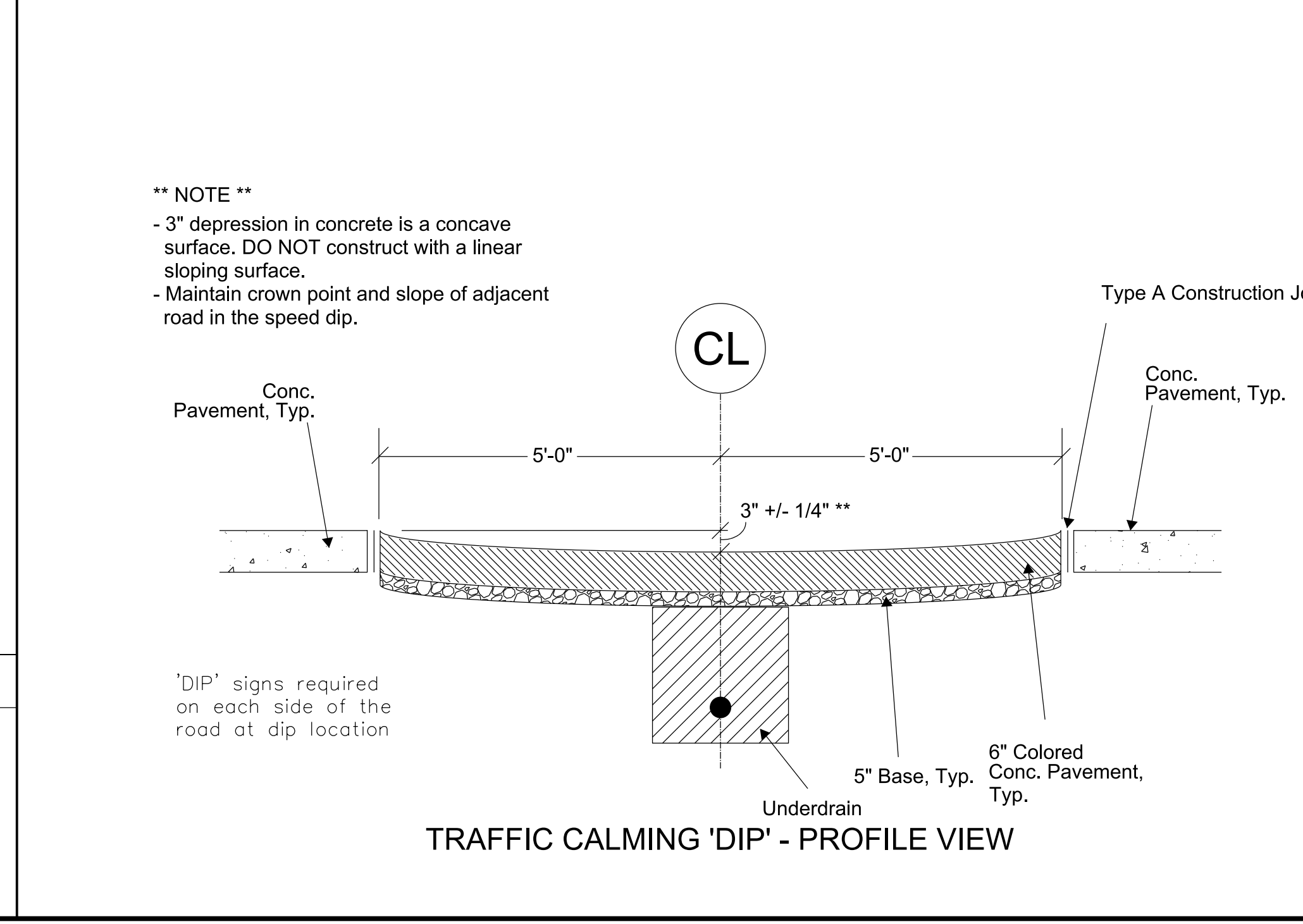
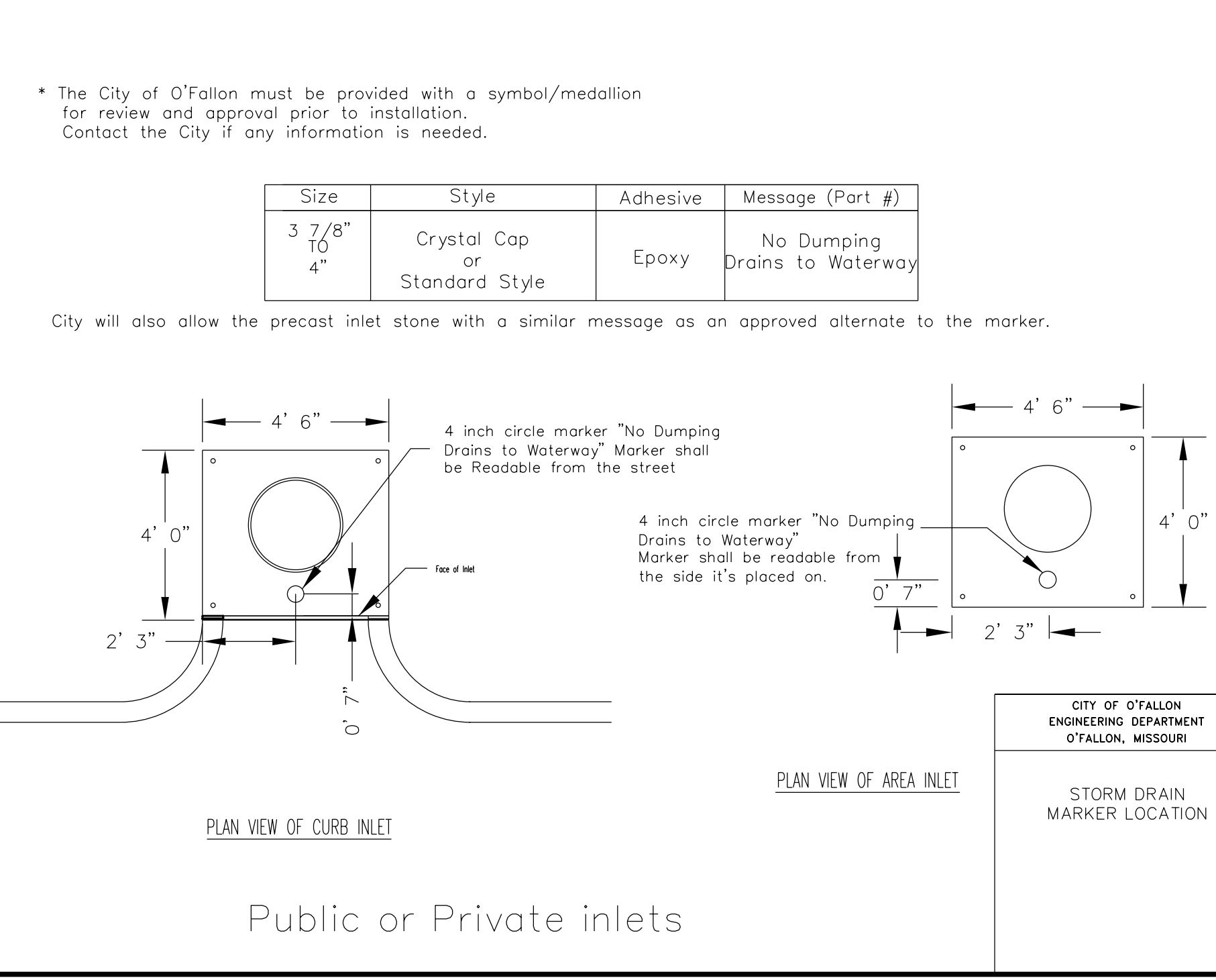
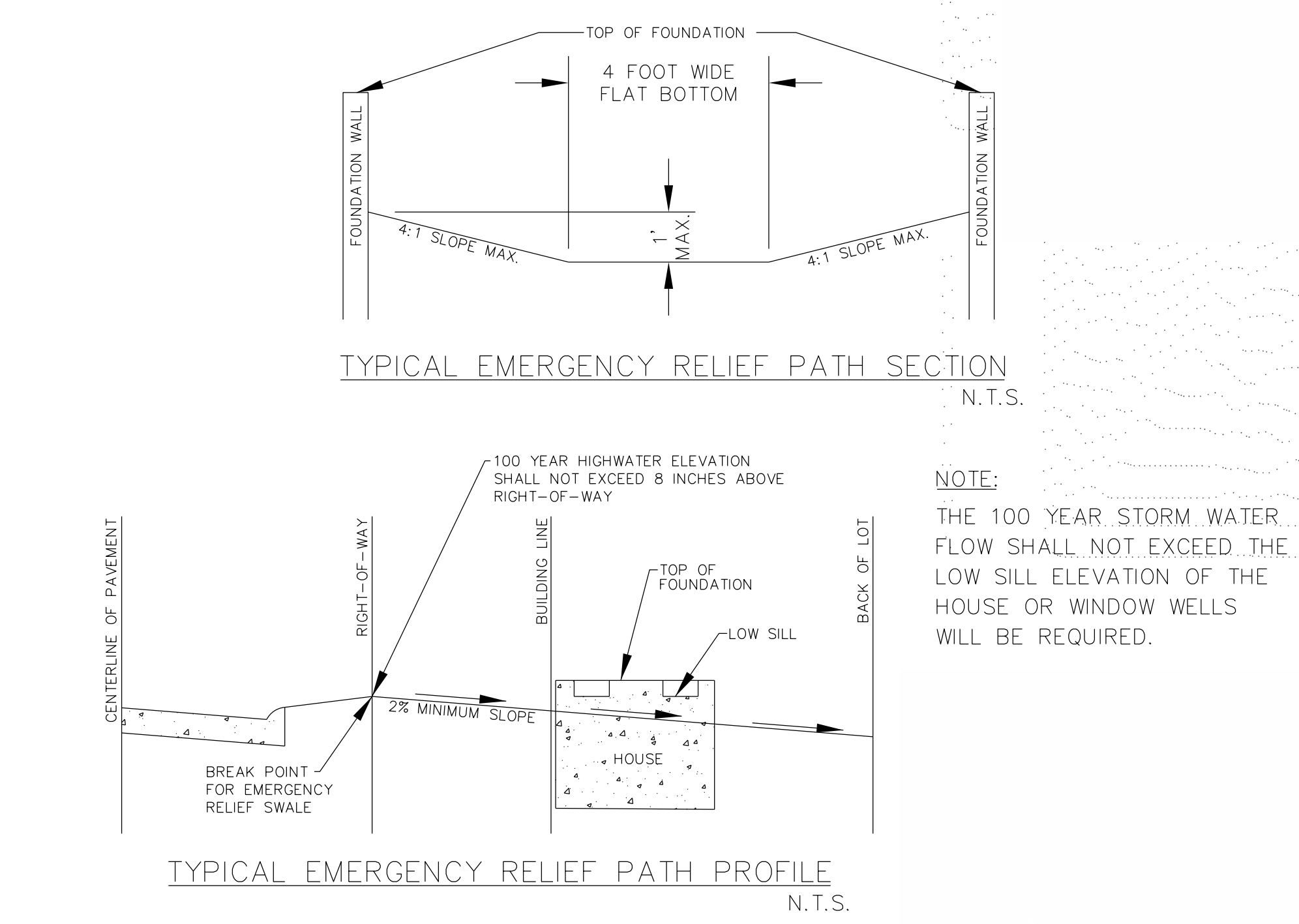
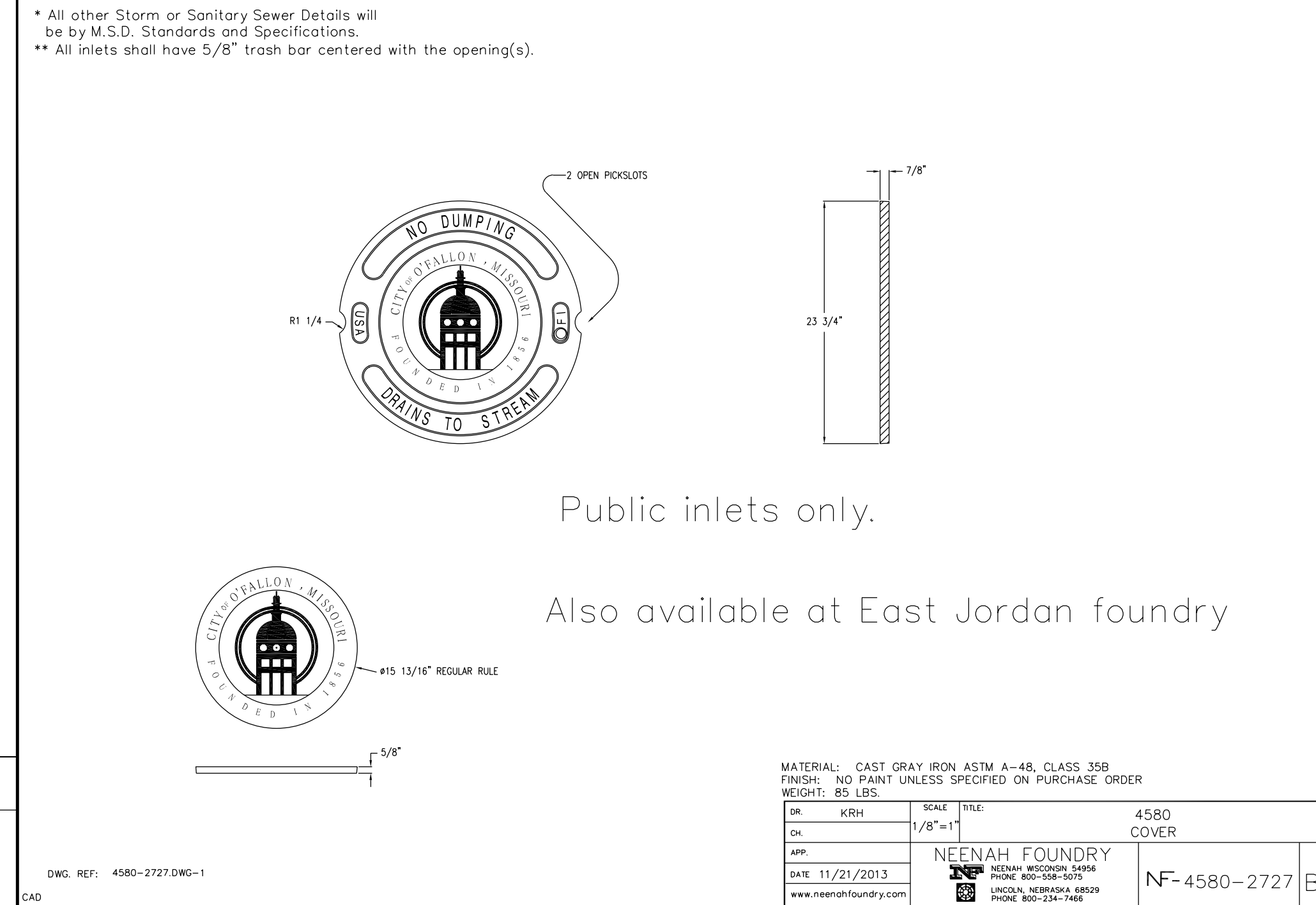
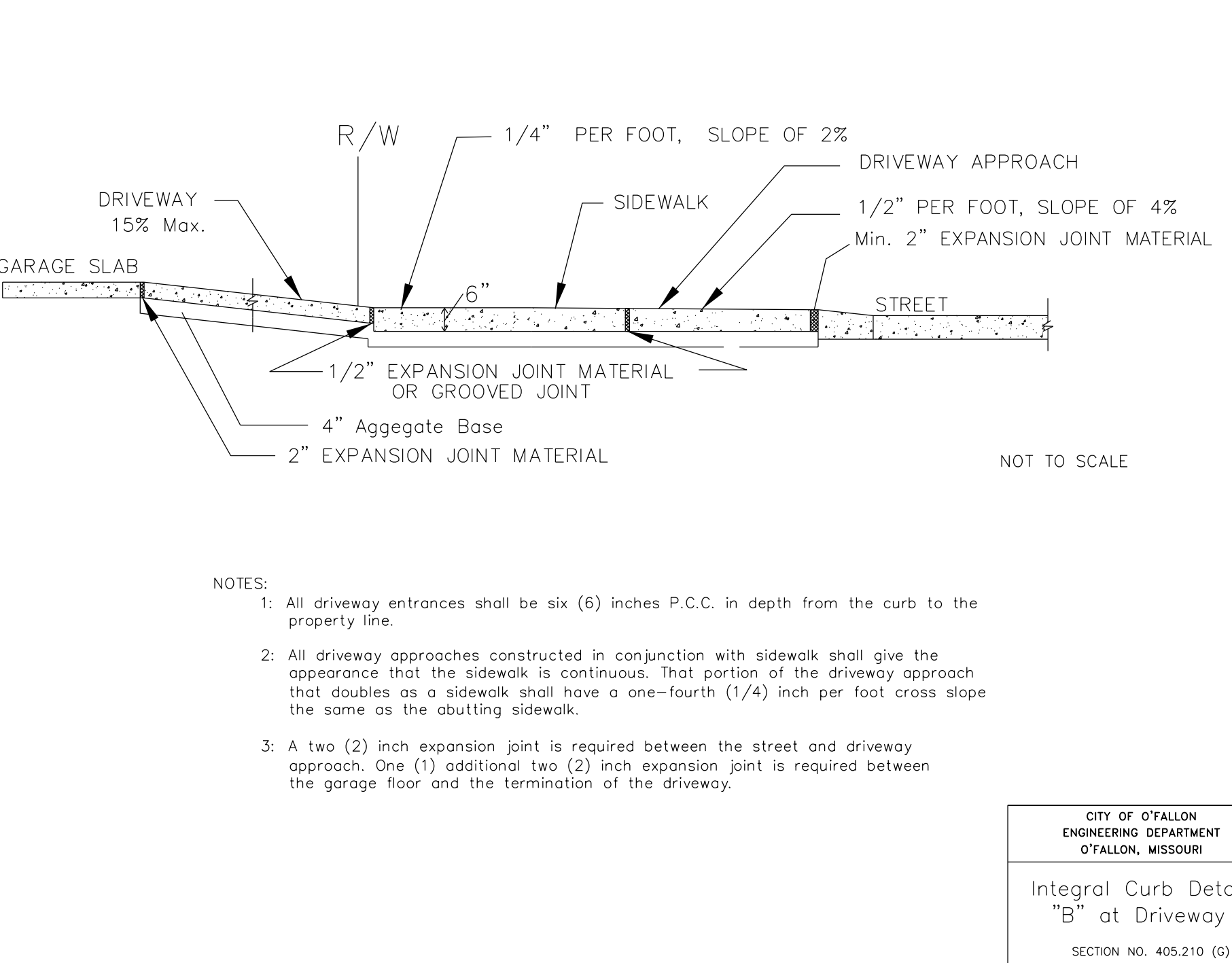
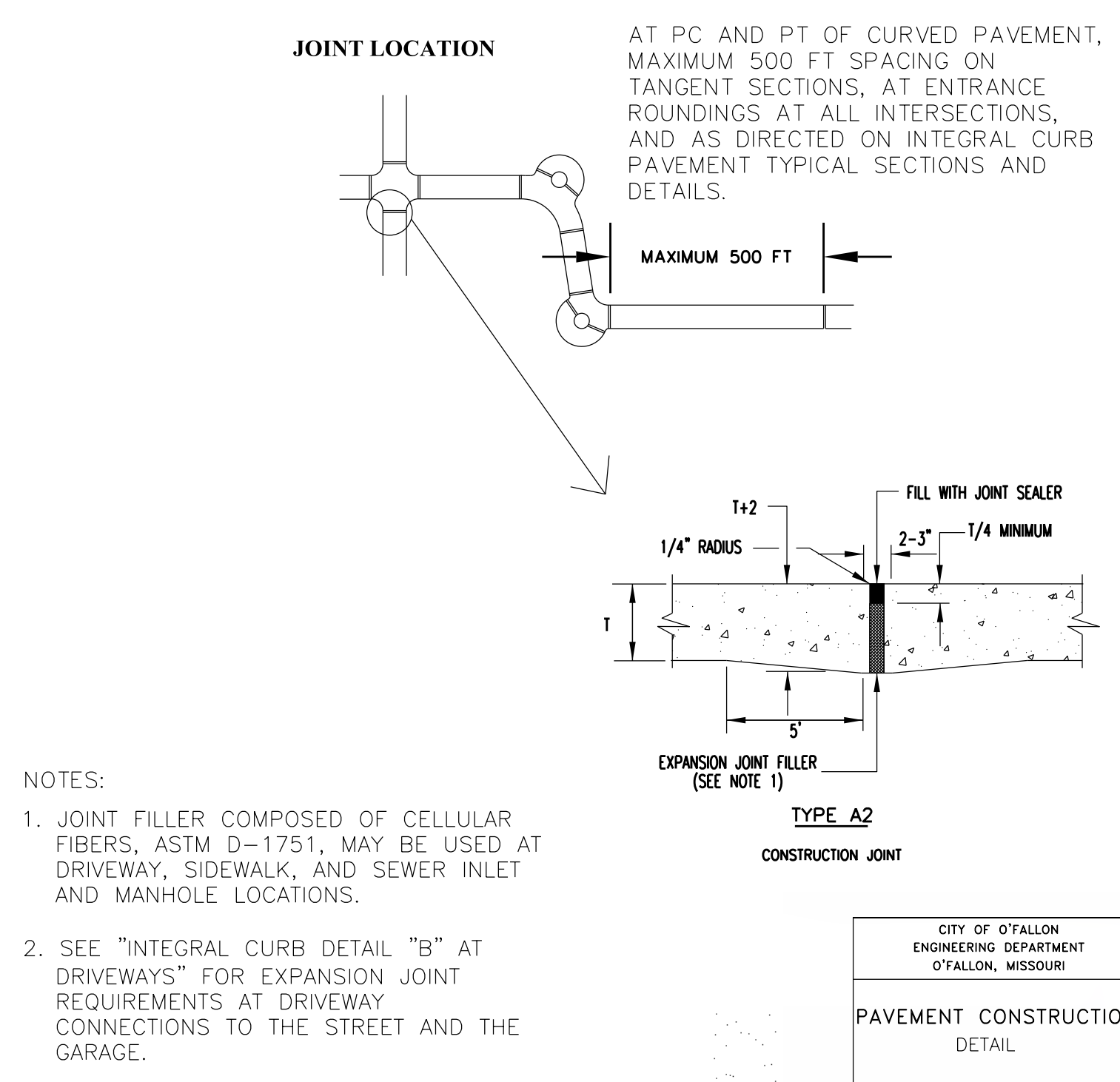


GENERAL NOTES:

- ALL SIGN POST AND BACK OF SIGNS THAT ARE TO BE PAINTED BLACK SHALL USE A PAINT SYSTEM THAT PROVIDES A MINIMUM 7 YEAR LIFE EXPECTANCY. MAY USE: a) CARBOLINE RUSTBOND BASE AT 1-2 MILS THICK, CARBOLINE 893 507 MID-LAYER LENGTHS FOR MINOR AND COLLECTOR SIGNS SHALL BE 24, 30 & 36 INCH LENGTHS, OR LONGER AS NEEDED, TO ACCOMMODATE STREET NAME. SIGN LEGEND SHALL BE 7 INCH 3M ENGINEER GRADE SHEETING (OR APPROVED EQUAL), WHITE REFLECTIVE WITH THE CITY OF O'FALLON LOGO WITH 6 IN. BLACK NON-REFLECTIVE LETTERS FOR ARTERIALS, AND 4 IN. SIGN LEGEND FOR MINOR AND COLLECTOR SIGNS WITH 4 IN. LETTERS. ALL REFLECTIVE SHEETING SHALL MEET AND OR EXCEED ASTM D 4956 SPEC. TYPE 3 OR HIGHER (HIGH INTENSITY OR DIAMOND GRADE).
- "CLEARVIEW" FONT SHALL BE USED ON ALL STREET SIGNS.
- SIGN POSTS SHALL BE HEAVY "U" CHANNEL (2 LBS/FT) PAINTED BLACK STEEL POSTS FOR COLLECTOR/MINOR STREETS, ARTERIAL STREETS SHALL HAVE 2" SQUARE POSTS WITH BREAKAWAY ASSEMBLY.
- SIGN POSTS SHALL EXTEND A MINIMUM OF 30 INCHES IN THE GROUND AND FLUSH.
- THE CONTRACTOR SHALL BE RESPONSIBLE FOR VERIFICATION OF UNDERGROUND UTILITIES AND STRUCTURES SHOWN OR NOT SHOWN. PLEASE CONTACT CITY FOR LOCATION OF CITY UTILITIES NOT FOUND BY DIG-RITE SERVICES.
- SIGNS SHALL NOT CREATE A SITE DISTANCE PROBLEM OR CONFLICT WITH PEDESTRIAN TRAFFIC.
- SPEED LIMIT SIGNS MUST BE AT EVERY ENTRANCE TO A SUBDIVISION ALONG THE LOT LINE BETWEEN FIRST AND SECOND LOT AND APPROXIMATELY EVERY TWO THOUSAND (2,000) FEET THERE AFTER. ALSO, EVERY CONNECTING SIDE STREET MUST HAVE ONE SPEED LIMIT SIGN APPROXIMATELY FIFTY FEET FROM INTERSECTION AND APPROXIMATELY EVERY TWO THOUSAND FEET (2,000) THERE AFTER.
- ALL SIGNS UNLESS OTHERWISE STATED, SHOULD BE CONSTRUCTED AND INSTALLED PER MUTCD.



MCKELVEY HOMES
Building A Tradition of Excellence Since 1888
218 Chestfield Towne Center
Chestfield, MO 63005
Phone: (636) 530-6800

VOLZ Incorporated
ARCHITECTURE
LANDSCAPE ARCHITECTURE
TRANSPORTATION MANAGEMENT
10849 Indian Head Indl. Blvd.
St. Louis, Missouri 63132
Phone: (314) 650-1250 Fax
www.volzinc.com
Volz ID# 203
Aulinity #203

RYAN L. HOLMES
Professional Engineer
PE-2017018988

SOMMERLIN

CONSTRUCTION DETAILS: SHEET 3

Design By: R/LH
Drawn By: R/LH
Checked By: R/LH

08-28-21
C32

Volz Project # 22074

H:\CAD\22000-22999\22074\ImpPlans\22074 - C32 Construction Details Sheet 3.dgn - Default 6/29/2021 4:50:05 PM Plotted by: rhomes Plot Scale: 1:10000 sf / in. Plot Driver: volz15.pdf.plt; Pen Table: volz15.pdf.plt