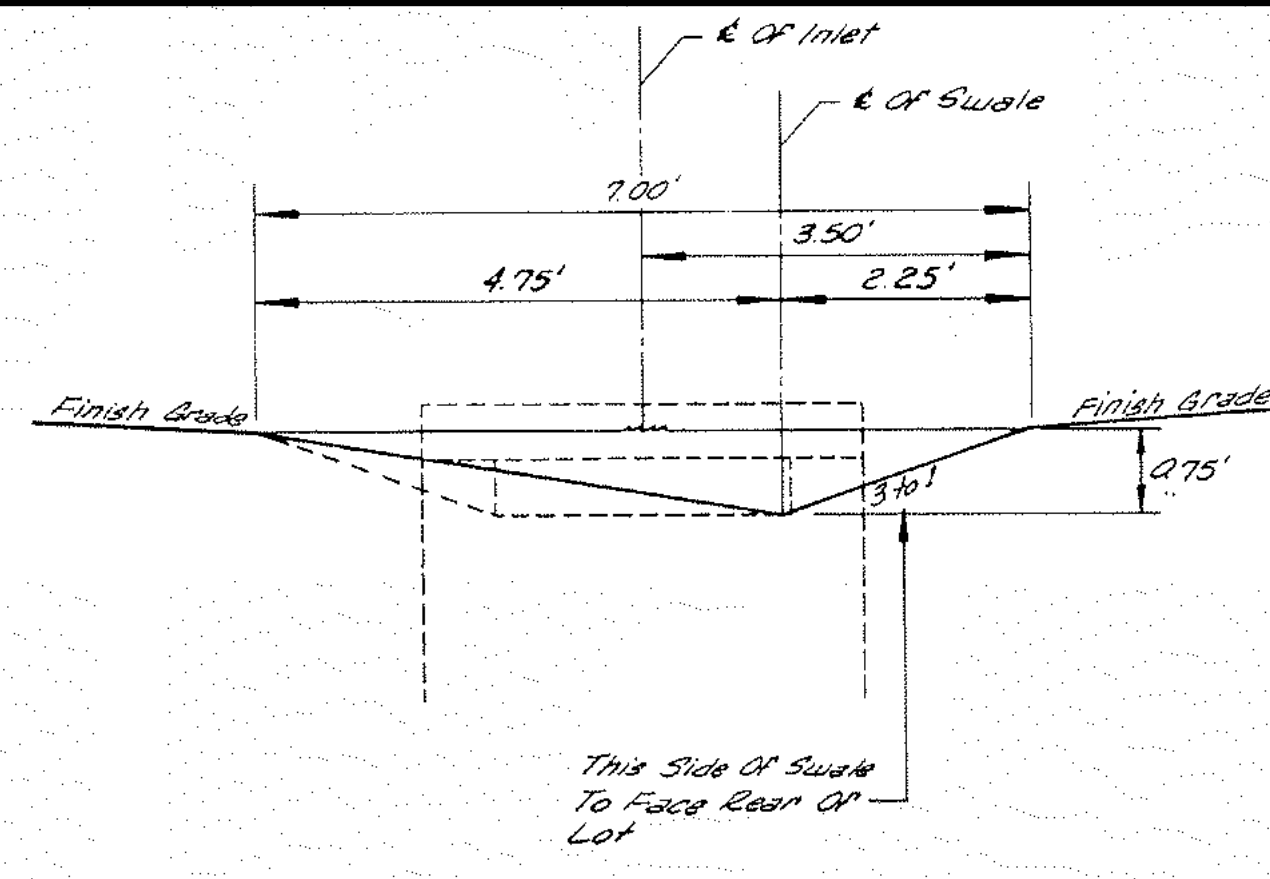
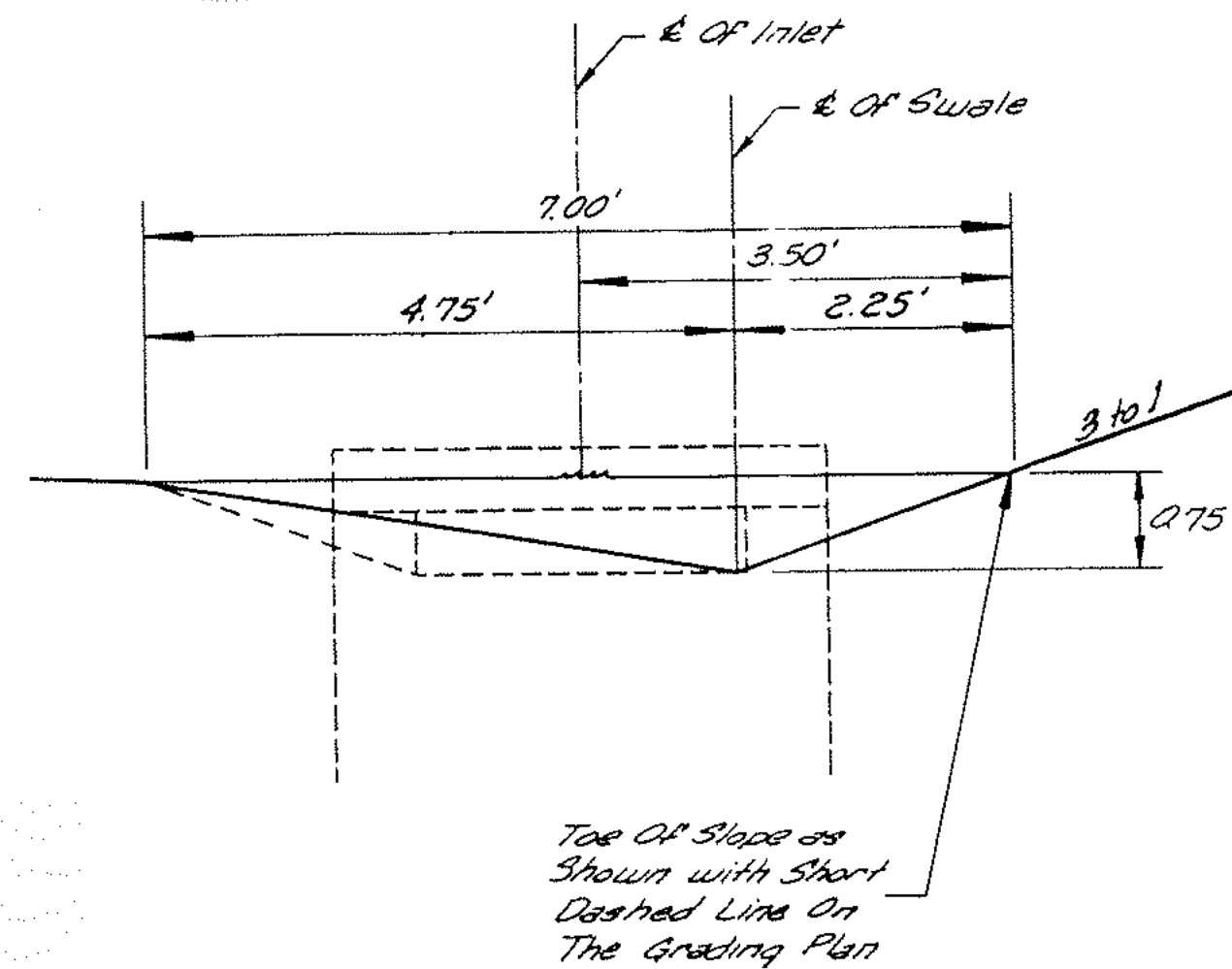


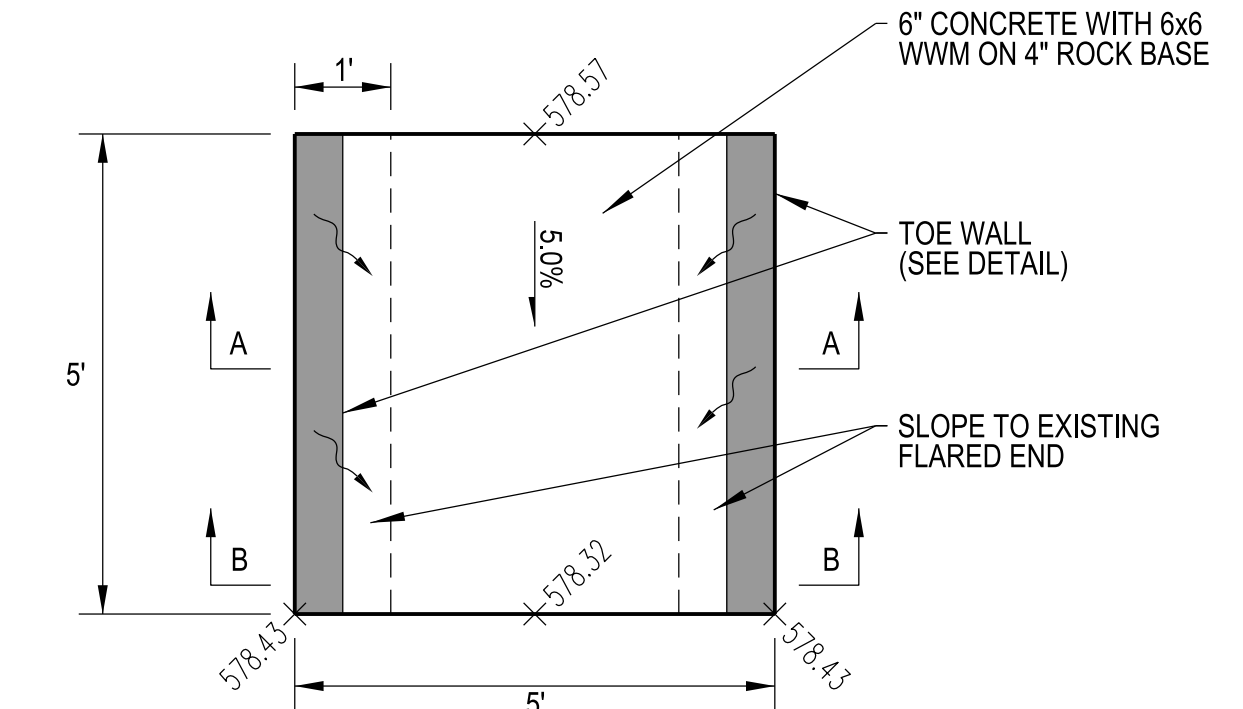
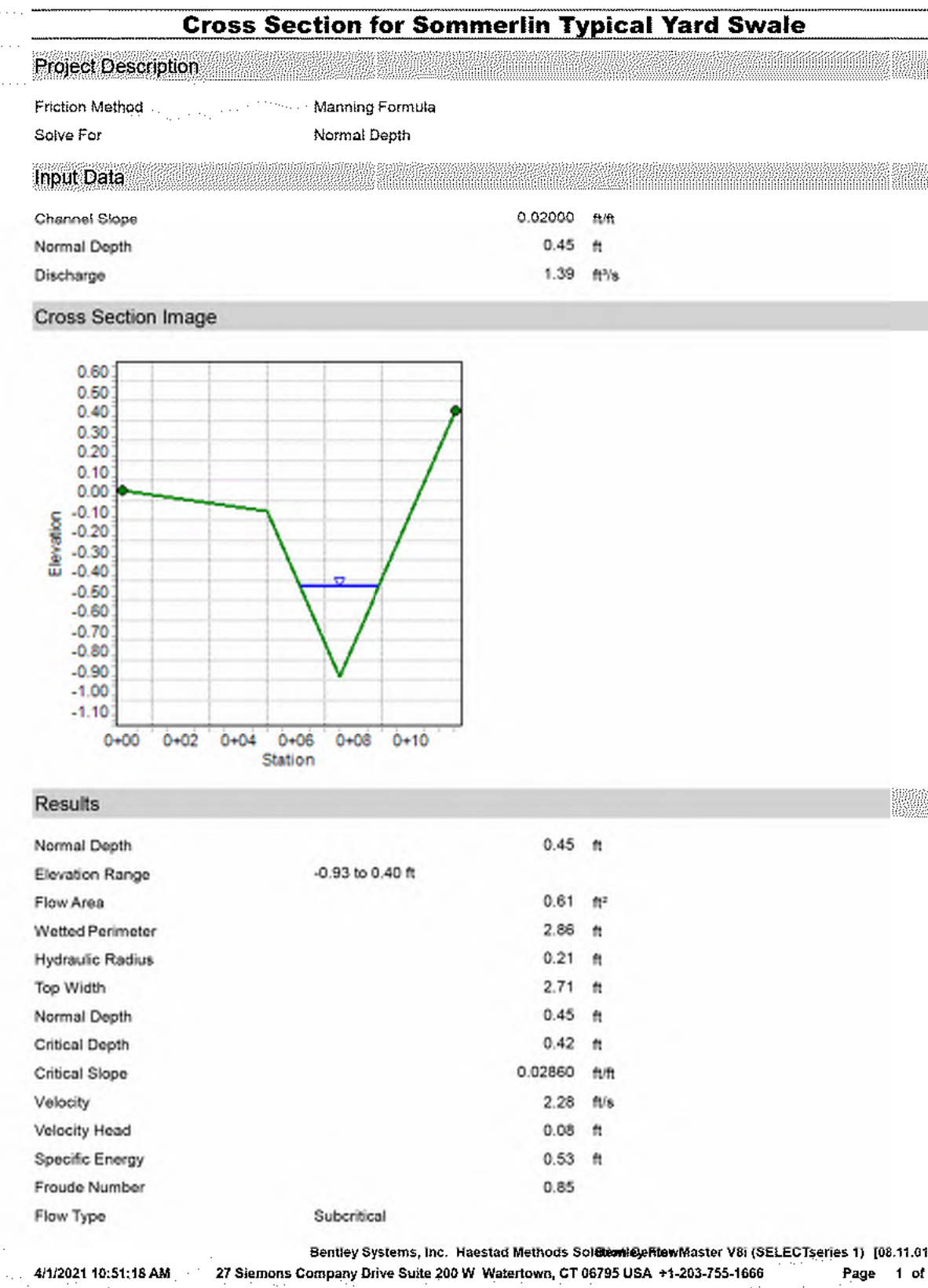
TYPICAL TOP OF TERRACE SWALE  
N.T.S.



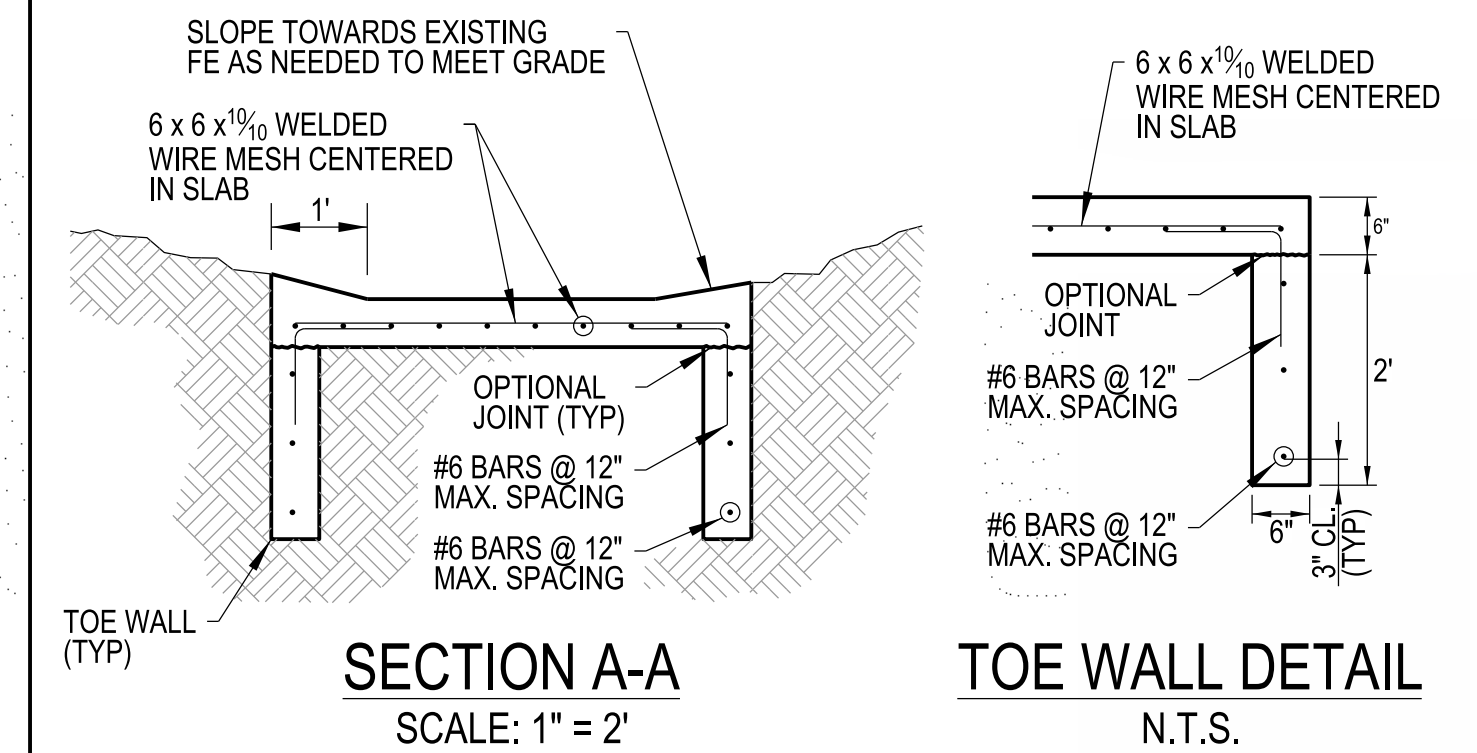
TYPICAL REAR YARD SWALE  
N.T.S.



TYPICAL TOE OF TERRACE SWALE  
N.T.S.

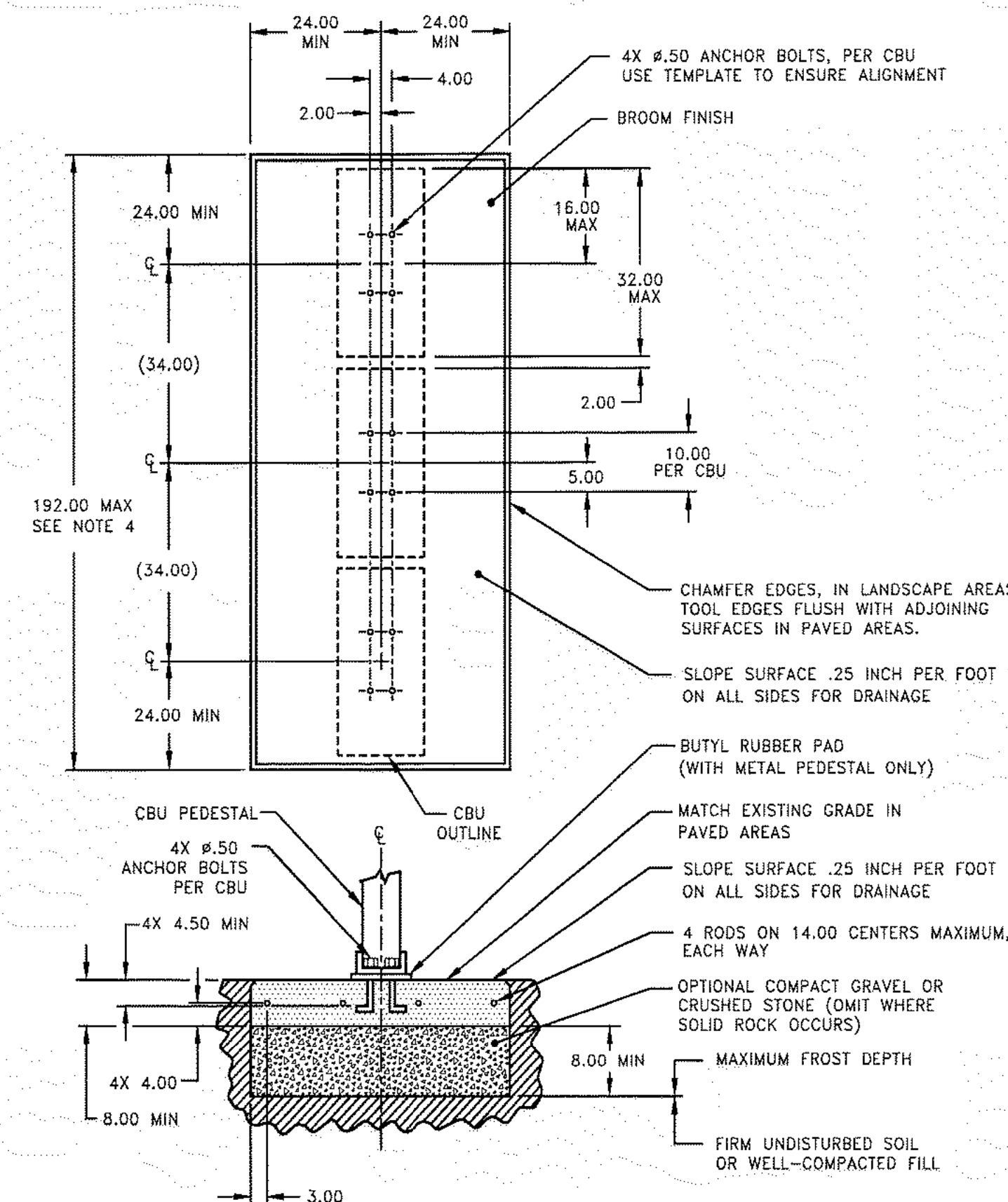


CONCRETE FLUME PLAN VIEW  
SCALE: 1" = 2'



CONCRETE FLUME DETAIL

USPS APPROVED SPECIFICATIONS – CONCRETE PAD (MULTIPLE UNIT)



- NOTES:
- CONCRETE SHALL HAVE A COMPRESSIVE STRENGTH OF 3000 PSI @ 28 DAYS, CONTAIN 4% MIN - 6% MAX AIR ENTRAINMENT AND BE PLACED WITH A 3.50 - 4.50 SLUMP IN ACCORDANCE WITH ACI 301.
  - REINFORCING STEEL RODS SHALL CONFORM TO ASTM A615, GRADE 60.
  - ANCHOR BOLTS SHALL CONFORM TO ASTM A193, GRADE 88M, TYPE 316 STAINLESS STEEL.
  - A 3 CBU CONFIGURATION IS DEPICTED. A 2 OR 4 CBU CONFIGURATION MAY BE USED AS LONG AS THEY ARE ARRANGED IN GROUPS SUCH THAT THE OVERALL DIMENSION OF THE CONCRETE BASE DOES NOT EXCEED 192 INCHES.

CLUSTER BOX UNIT (CBU)  
-ANCHORING METHODS-

CBU's must be level and mounted firmly in concrete, using one of the following methods.

- The J-bolt method is the preferred method of installation of CBU's on concrete pads; however, the J-bolt pattern must be accurate with the CBU pedestal plate. When using J-bolts, in order to prevent any damage or accidents that could result from the exposed bolts, consideration should be given as to the time lapse between pouring the concrete and the actual installation. Expansion anchors must be installed in accordance with the manufacturer's instructions.
- The use of anchor bolts for the installation of CBU's on concrete pads is also acceptable as long as the methods described below are followed.
  - Hilti Kwik bolt II, 1/2" diameter X 5-1/2" overall length  
Catalog Number: 000-453-696, KB II 12-512  
Stainless Steel Catalog Number: 000-454-744  
Minimum embedment in concrete must be no less than 3-1/2"
  - ITW Ramset Redhead Trublot, galvanized, 1/2" diameter X 7" overall length
  - Rawl Stud, 1/2" diameter X 5 1/2" overall length, galvanized.  
Catalog Number: 7324  
Minimum embedment in concrete must be no less than 4"

CLUSTER BOX UNIT (CBU)  
-CONCRETE PAD REQUIREMENTS-

- ALL FREE STANDING PADS MUST BE 8" THICK -

1 UNIT	SINGLE PAD	4' X 4'
2 UNITS	DOUBLE PAD	4' X 7'
3 UNITS	TRIPLE PAD	4' X 10'
4 UNITS	QUAD PAD	4' X 13'

\*\*\* WHEN PLACING A PARCEL LOCKER AT ANY CBU LOCATION, INCREASE THE PAD SIZE BY AN ADDITIONAL 4' X 4' \*\*\*

DATE: 4/5/2010	SCALE: 1 : 1		1010 E. 62nd Street Los Angeles, CA 90001 Phone: (800) 624-5269 Fax: (800) 624-5299 email: engineering@mailboxes.com	CLUSTER BOX UNITS 3300 SERIES "F" CBUs AVAILABLE FOR USPS ACCESS OR PRIVATE ACCESS	MODEL: 3316 DRAWING NO: CAD_3316
----------------	--------------	--	--	--	-------------------------------------

OR USPS APPROVED EQUAL

**MCKELVEY HOMES**  
Building A Tradition Of Excellence Since 1888  
218 Chestfield Towne Center  
Chestfield, MD 20605  
Phone: (838) 530-8800

**VOLZ**  
INCORPORATED  
TRANSPORTATION  
CONSTRUCTION MANAGEMENT  
10849 Indian Head Indl. Blvd.  
Suite 100, Millersville, MD 21104  
314.850.1250 Fax  
www.volzinc.com  
Arlinity #203

RYAN L. HOLMES  
Professional Engineer  
PE-2017018988

**SOMMERLIN**

CONSTRUCTION DETAILS:  
SHEET 9

Design By: RLH  
Drawn By: RLH  
Checked By: RLH

Date: 06-28-21  
Volz Project # 22074

C38