

H:\CAD\22000-22999\22074\NmpPlans\22074 - C48.5 Pump Station Details Sheet 6.dgn - Default 6/30/2021 8:55:48 AM Plotted by: rholmes Plot Scale: 1:0000 / in. Plot Driver: vopz15.pdf.plt; Pen Table: vopz15.pdf; tlb

BILL OF MATERIALS (SUPPLIED BY CUSTOM CONTROL SOLUTIONS)				
ITEM	CODE	DESCRIPTION	QTY	PART NO.
1	ENCL	NEMA 4X STAINLESS STEEL ENCL	1	SAGINAW SCE-48EL3612SLPPL
2	BP	ENCLOSURE BACK PANEL	1	SAGINAW SCE-48P36
3	DF	ENCLOSURE DEAD FRONT DOOR	1	SAGINAW SCE-DF48EL36LP
4	FEET	ENCLOSURE MOUNT FEET	1	B-LINE WMS556
5	TVSR	20 SURGE SUPPRESSOR	1	DITEK DSD-48020
6	PDB1	POWER DISTRIBUTION BLOCK	1	FERRAZ MP0653133 * (3)MP06C263
7	FU1	15A CLASS CC FUSE	3	FERRAZ ATDR 15
8	FUOLFP	3-POLE CLASS CC FUSE HOLDER	1	FERRAZ USCC31
9	PH	20 POWER MONITOR	1	SYMCOM 201A AU * 8-PIN BASE
10	CPT	3KVA TRANSFORMER	1	G.E. 075180013
11	CB1,2	80A 3P CIRCUIT BREAKER	2	ABB XT2HJ3080BFF000000 * LV05
12	SSRV1,2	REDUCED VOLTAGE STARTER	2	ABB PSTK60-600-70
13	CB3	30A 1-POLE 120V CB	1	EATON QCR1030
14	PDB2	POWER DISTRIBUTION BLOCK	3	ERICO 569010
15	FU2	2A TO HEATER FUSE	1	BUSSMAN MDL 2
16	HSTAT	HEATER THERMOSTAT	1	FINDER 77.81-G.000.2403
17	HTR	ENCLOSURE CONDENSATE HEATER	1	FINDER 7H.61-G.230.0105
18	CB4,5	15A 1-POLE 120V CB	2	EATON QCR1015
19	CB6	10A 1-POLE 120V CB	1	EATON QCR1010
20	ISR1,4	10H INTRINSICALLY SAFE RELAY	4	SYMCOM 15S-101
21	TD1	ON DELAY WITH INSTANT	1	TIMEMAK 363-H-1SEC. * 8-PIN BASE
22	CR	4PDT 120V CONTROL RELAY	16	EATON D7FFAA * D7PAA
23	CB7,8	5A 1-POLE 120V CB	2	EATON FAZ-C5-1-5A
24	PL(A)	22MM AMBER LED PILOT LIGHT	2	IDEC HNP-4820-22
25	PL(B)	22MM RED LED PILOT LIGHT	3	IDEC HNP-4820-22
26	PL(C)	22MM GREEN LED PILOT LIGHT	2	IDEC HNP-4820-22
27	ETM	HOURS/EVENTS COUNTER	2	EATON CEC-55PH-406
28	SS1,2	22MM 3-POS. SELECTOR SWITCH	2	IDEC HW18-3TF20 * (1)HW-U10-F
29	SS3	22MM 2-POS. SELECTOR SWITCH	1	IDEC HW18-2TF10
30	PB1	22MM BLACK PUSH BUTTON	1	IDEC HW18-MF10-B * (1)HW-U01-F
31	PB2	22MM BLACK PUSH BUTTON	1	IDEC HW18-MF10-B
32	FU3	3A TO MINIATURE FUSE	1	BUSSMAN MDL 3
33	FU4	10A FA MINIATURE FUSE	1	BUSSMAN MDA 10
34	FU5	4A TO MINIATURE FUSE	1	BUSSMAN MDL 4

BILL OF MATERIALS (SUPPLIED BY CUSTOM CONTROL SOLUTIONS)				
ITEM	CODE	DESCRIPTION	QTY	PART NO.
34	FU6	1/10A FA MINIATURE FUSE	1	BUSSMAN AGC 1/10
35	FU7	ALARM/DIALER MINIATURE FUSE	1	BUSSMAN MDL 5
36	SS4	22MM 2-POS. SELECTOR SWITCH	1	IDEC HW18-2TF10
37	PS1	24VDC POWER SUPPLY	1	PHLS CSS-241
38	UPS1	UNINTERRUPTIBLE POWER SUPPLY	1	PHLS UB10-241
39	BATT	UPS BATTERY	1	POWER SONIC PS1270
40	AL	RED STROBE ALARM LIGHT	1	INDRAM SBN120AC-RED
41	HRM	EXTERIOR ALARM HORN	1	FLOYD BELL MV-09-201-G
42	BASE	HEVERRE 1 1/2" 3/8" 2" 3/8"	2	IDEC SRP-M1G
43	FURD	120VDC FUSE CLIP	3	PHOENIX 3004249
44	FURD	120VDC FUSE CLIP	3	PHOENIX 3004265

BILL OF MATERIALS (SUPPLIED BY VANDEVANTER ENGINEERING)				
ITEM	CODE	DESCRIPTION	QTY	PART NO.
A	TC-2000	BACKUP LEVEL CONTROLLER	1	VDE/IDEC TC-2000/FL1F-H12RC
B	MINDCAS	PUMP MONITOR RELAY	2	FLYGT/KYLEM 14 407120
C	MS	MULTISMART PUMP CONTROLLER	1	MULTITROG MULTISMART 3 PUMP CONTROLLER
D	ISB	4-20MA INTRINSIC BARRIER	1	PEPPERL & FUCHS D71816
E	DIALER	CELLULAR ALARM DIALER	1	OMNISITE XR-50
F	BATTERY	BATTERY BACKUP FOR DIALER	1	OMNISITE S-BT-CX-EBBAT

EXAMPLE - SEE FINAL DRAWING BY PUMP SUPPLIER

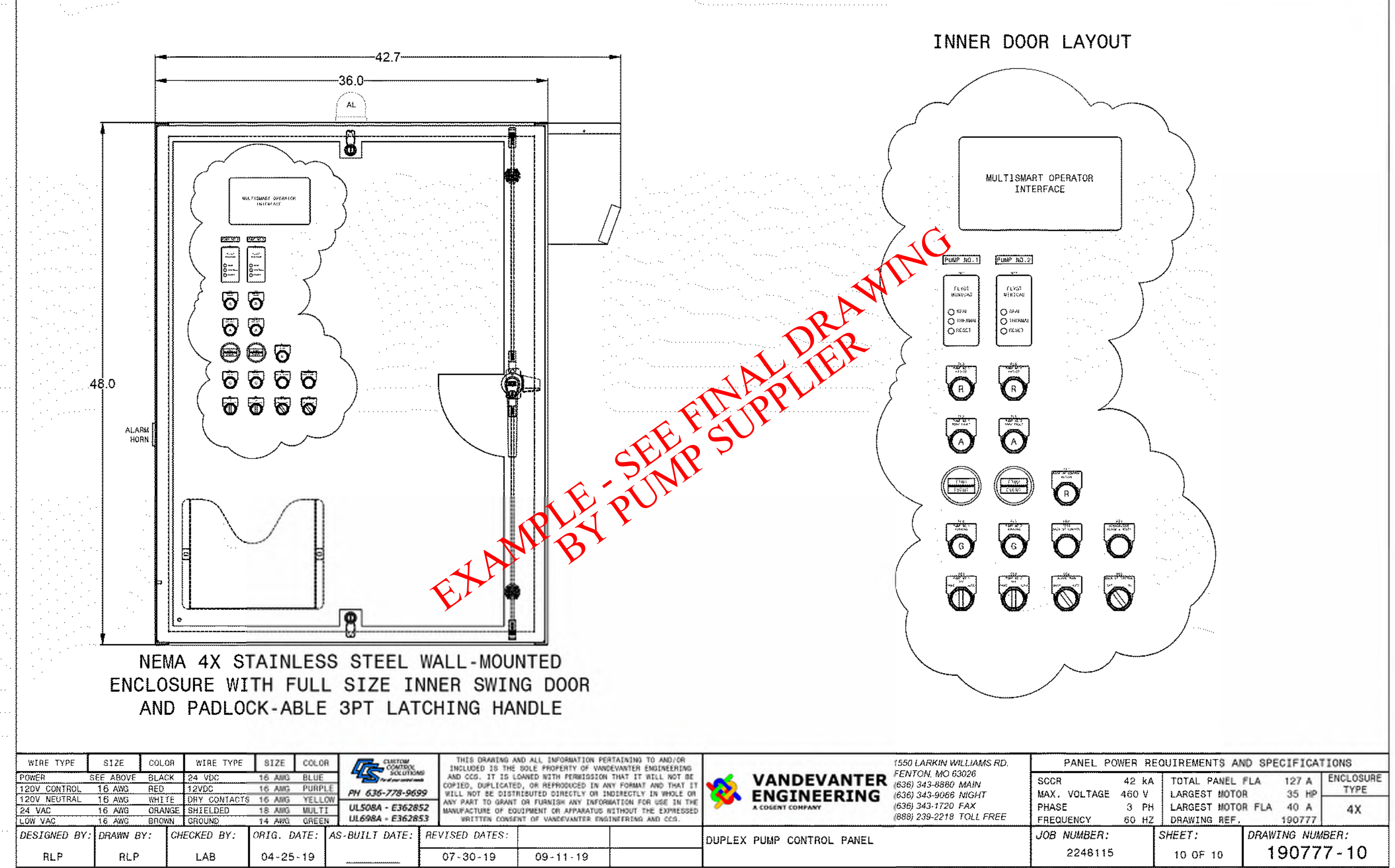
WIRE TYPE	SIZE	COLOR	WIRE TYPE	SIZE	COLOR
POWER	DEF ABOVE	BLACK	24 VDC	16 AWG	BLUE
120V CONTROL	16 AWG	RED	120VDC	16 AWG	PURPLE
120V NEUTRAL	16 AWG	WHITE	120V CONTACTS	16 AWG	YELLOW
24 VAC	16 AWG	ORANGE	SHIELDED	16 AWG	MULTI
LOW VAC	16 AWG	BROWN	SHIELDED	16 AWG	GREEN

DESIGNED BY:		DRAWN BY:		CHECKED BY:		ORIG. DATE:		AS-BUILT DATE:		REVISED DATES:	
RLP	RLP	LAB	LAB	LAB	LAB	04-25-19	04-25-19	07-30-19	07-30-19	09-11-19	09-11-19

PANEL POWER REQUIREMENTS AND SPECIFICATIONS			
SCCR	42 KA	TOTAL PANEL FLA	127 A
MAX. VOLTAGE	480 V	LARGEST MOTOR	35 HP
PHASE	3 PH	LARGEST MOTOR FLA	40 A
FREQUENCY	60 HZ	DRAWING REF.	190777



WIRE TYPE	SIZE	COLOR	WIRE TYPE	SIZE	COLOR
POWER	DEF ABOVE	BLACK	24 VDC	16 AWG	BLUE
120V CONTROL	16 AWG	RED	120VDC	16 AWG	PURPLE
120V NEUTRAL	16 AWG	WHITE	120V CONTACTS	16 AWG	YELLOW
24 VAC	16 AWG	ORANGE	SHIELDED	16 AWG	MULTI
LOW VAC	16 AWG	BROWN	SHIELDED	16 AWG	GREEN

DESIGNED BY:		DRAWN BY:		CHECKED BY:		ORIG. DATE:		AS-BUILT DATE:		REVISED DATES:	
RLP	RLP	LAB	LAB	LAB	LAB	04-25-19	04-25-19	07-30-19	07-30-19	09-11-19	09-11-19

PANEL POWER REQUIREMENTS AND SPECIFICATIONS			
SCCR	42 KA	TOTAL PANEL FLA	127 A
MAX. VOLTAGE	480 V	LARGEST MOTOR	35 HP
PHASE	3 PH	LARGEST MOTOR FLA	40 A
FREQUENCY	60 HZ	DRAWING REF.	190777

**MCKELVEY**  
H O M E S  
Building A Tradition Of Excellence Since 1888  
218 Chesterfield Towne Center  
Chesterfield, MO 63005  
Phone: (636) 530-6800

**VOLZ**  
INCORPORATED  
10849 Indian Head Indl. Blvd.  
St. Louis, Missouri 63132  
314.850.1250 Fax  
www.volzinc.com  
Arlinville #203

RYAN L. HOLMES  
Professional Engineer  
PE-2017018988

SOMMERLIN

PUMP STATION DETAILS:  
SHEET 6

06-28-21  
C48.5

Design By: R/LH  
Drawn By: R/LH  
Checked By: R/LH  
Volz Project # 22074