

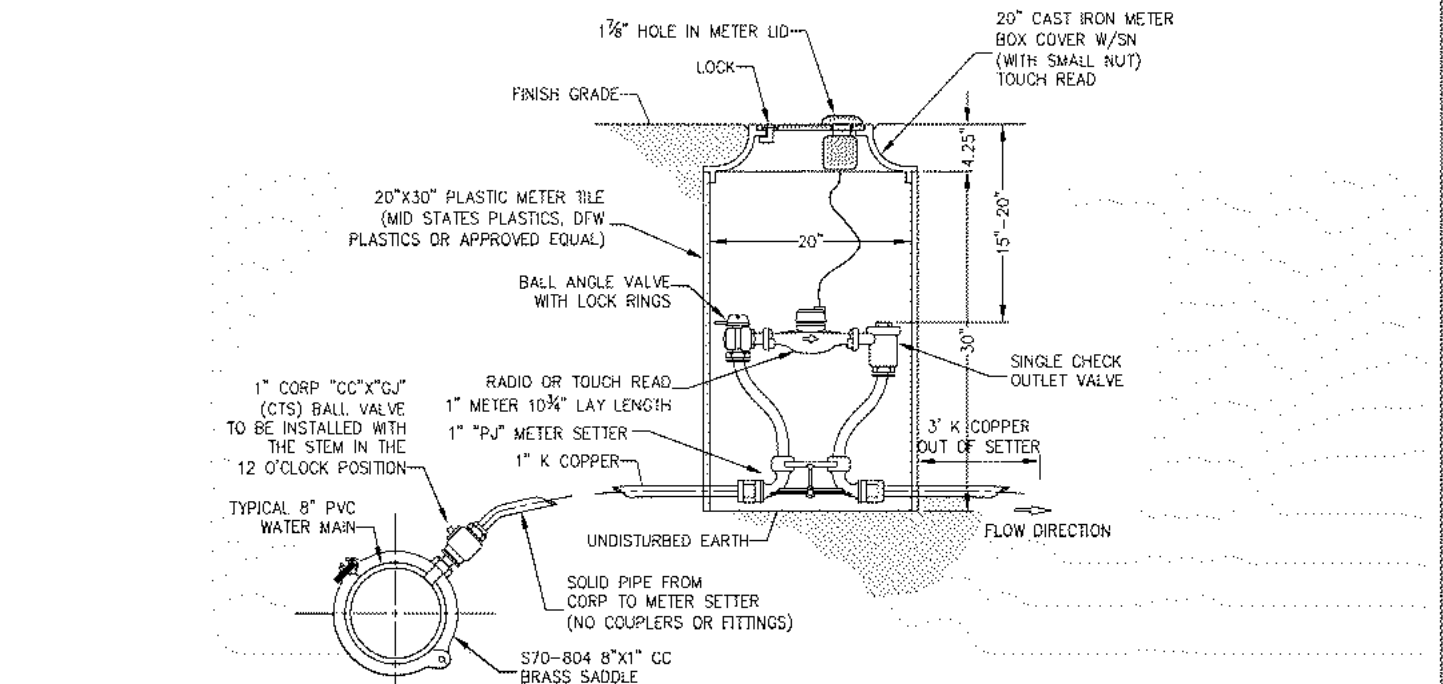
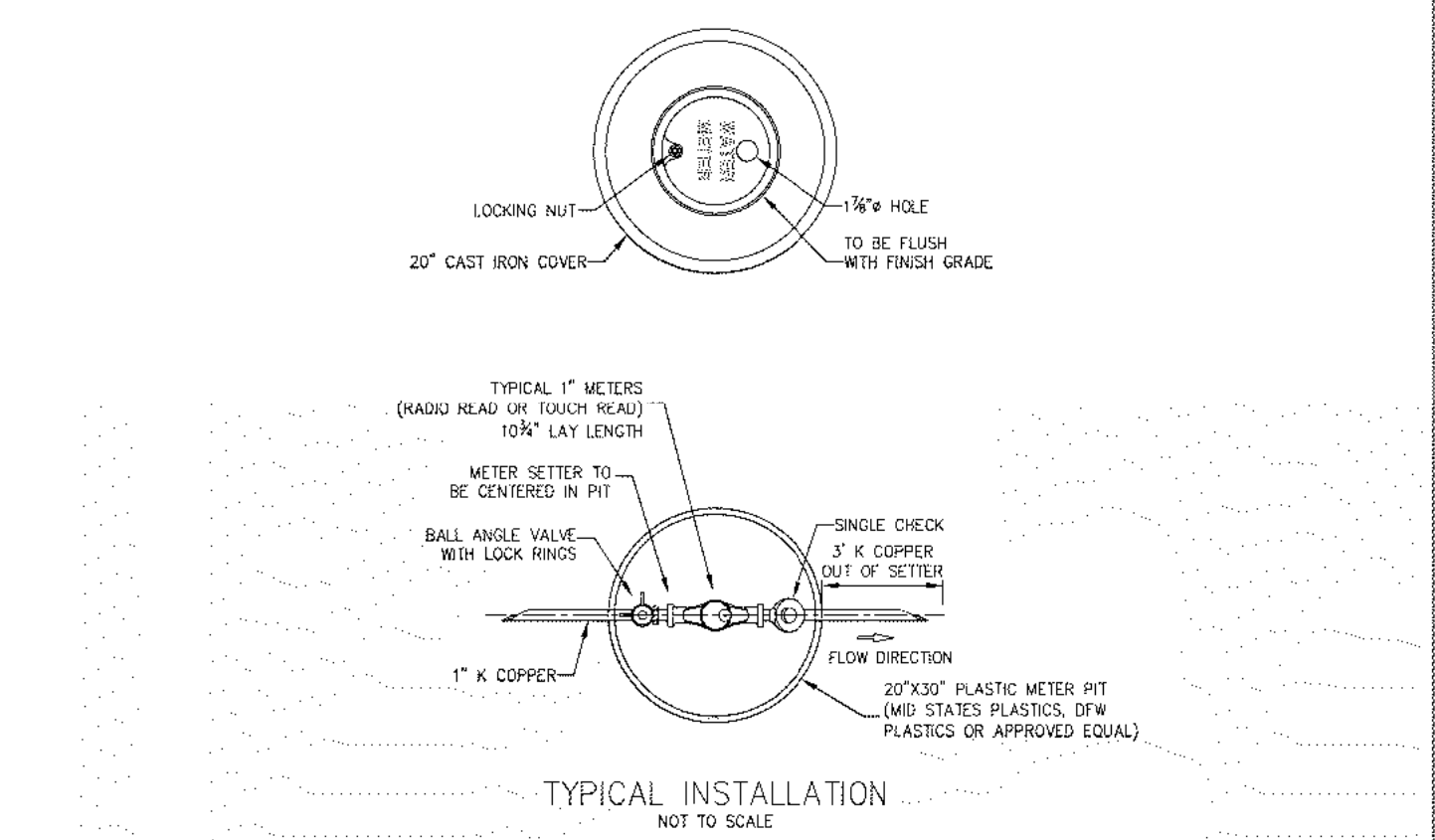
- ATTENTION:**
- BOTTOM OF TAP HOLE TO BE AT LEAST 12" BELOW BOTTOM OF BANK FOR ENTIRE WIDTH AND REASONABLY LEVEL.
  - THE EXCAVATION SHALL NORMALLY BE AT LEAST 42" DEEP.
  - THE B BANK MUST BE 12" FROM THE MAIN FOR ENTIRE WIDTH.
- PLAN VIEW**  
NOT TO SCALE
- NOTES:**
1. 10" DIMENSION (MAIN SIZE) IS VARIABLE.
  2. FOR MULTIPLE TAPS, ADD 12" OF WIDTH ALONG THE MAIN FOR EACH ADDITIONAL TAP. TAPS SHOULD NOT BE CLOSER THAN 12" TO EACH OTHER.
  3. TAPS SHOULD NOT BE CLOSER THAN 12" TO FACE OF BILL.
  4. TAP HOLE SHOULD BE FREE OF WATER AND MUD TO ALLOW SAFE HANDLING OF TAPPING MACHINE.
  5. TAPS WILL NOT BE MADE BEFORE SERVICE LINE IS COMPLETE.
  6. TAP HOLE MUST BE CLEAN ENOUGH TO REPAIR ANY DAMAGE TO LINE TRACING WIRE.
  7. THE EXCAVATION MUST COMPLY WITH ALL OSHA REGULATIONS.
  8. BACKFILL TAPS WILL BE AT THE DISCRETION OF WATER DISTRICT PERSONNEL.

TYPICAL 3/4" + 1" SERVICE CONNECTIONS  
TAP HOLE DIMENSIONS  
DETAIL "A"  
NOT TO SCALE

PUBLIC WATER SUPPLY DISTRICT #2  
OF SAINT CHARLES COUNTY

APRIL 20, 2005  
REV. SEPT. 8, 2007

14



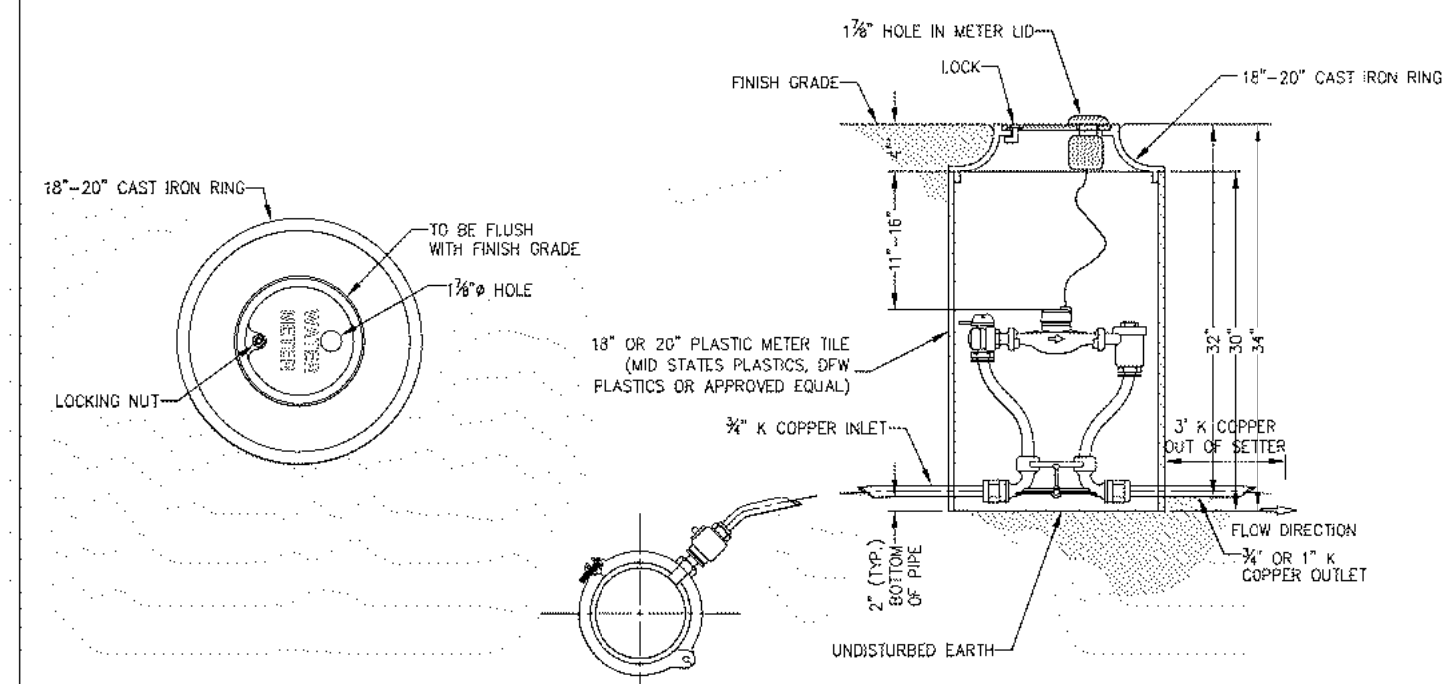
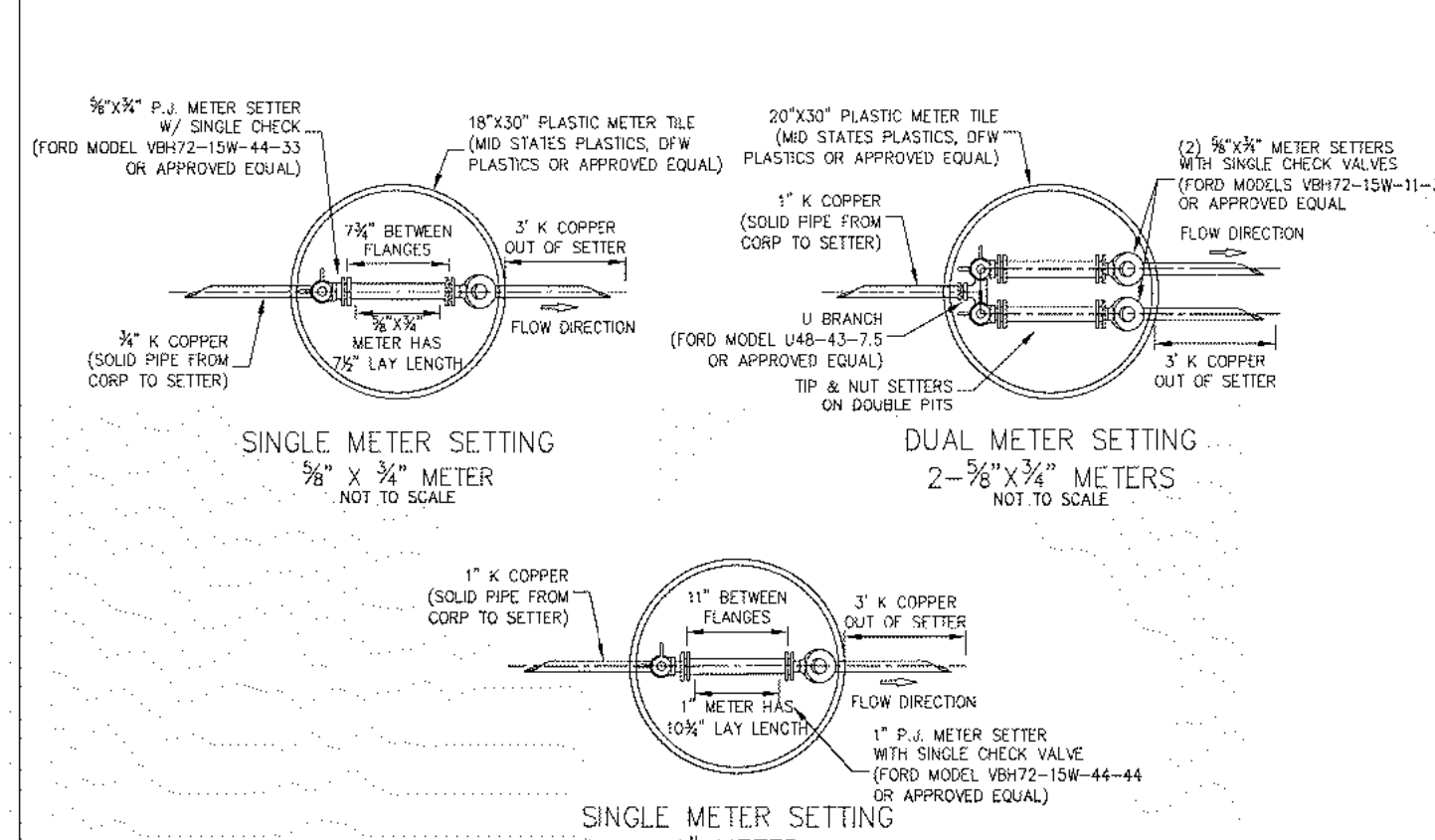
TYPICAL INSTALLATION  
NOT TO SCALE

TYPICAL 1" RESIDENTIAL  
WATER SERVICE  
DETAIL "C"  
NOT TO SCALE

PUBLIC WATER SUPPLY DISTRICT #2  
OF SAINT CHARLES COUNTY

APRIL 20, 2005  
REV. MAY 7, 2006

16



TYPICAL PLASTIC PIT SETTER FOR  
MODERATE TO COLD CLIMATES  
DETAIL "D"  
NOT TO SCALE

PUBLIC WATER SUPPLY DISTRICT #2  
OF SAINT CHARLES COUNTY

APRIL 20, 2005  
REV. SEPT. 8, 2007

17

H:\CAD\22000-22999\22074\ImpPlans\22074 - C41 Water Details Sheet 2.dgn - Default 6/29/2021 5:05:42 PM Plotted by: molmes Plot Scale: 1:0000 sf / in Plot Driver: volz15.pdf.plt cty Pen Table: volz15.pdf.tbl

WATER DETAILS:  
SHEET 2

06-28-21  
C41

Volz Project # 22074

Design By:	RLH
Drawn By:	RLH
Checked By:	RLH

APRIL 20, 2005  
REV. SEPT. 8, 2007

RYAN L. HOLMES  
Professional Engineer  
PE-2017018988

STATE OF MISSOURI  
Professional Engineer  
No. 2017018988  
Exp. 08/29/21

**VOLZ**  
INCORPORATED

ENGINEERING  
LAND DRAINAGE  
TRANSPORTATION  
CONSTRUCTION MANAGEMENT

10849 Indian Head Indl. Blvd.  
St. Louis, Missouri 63132  
314.890.1250 Fax  
www.volzinc.com  
Affinity #203

**MCKELVEY**  
**H O M E S**

Building A Tradition Of Excellence Since 1888  
218 Chesterfield Towne Center  
Chesterfield, MO 63005  
Phone: (636) 530-6800

**SOMMERLIN**