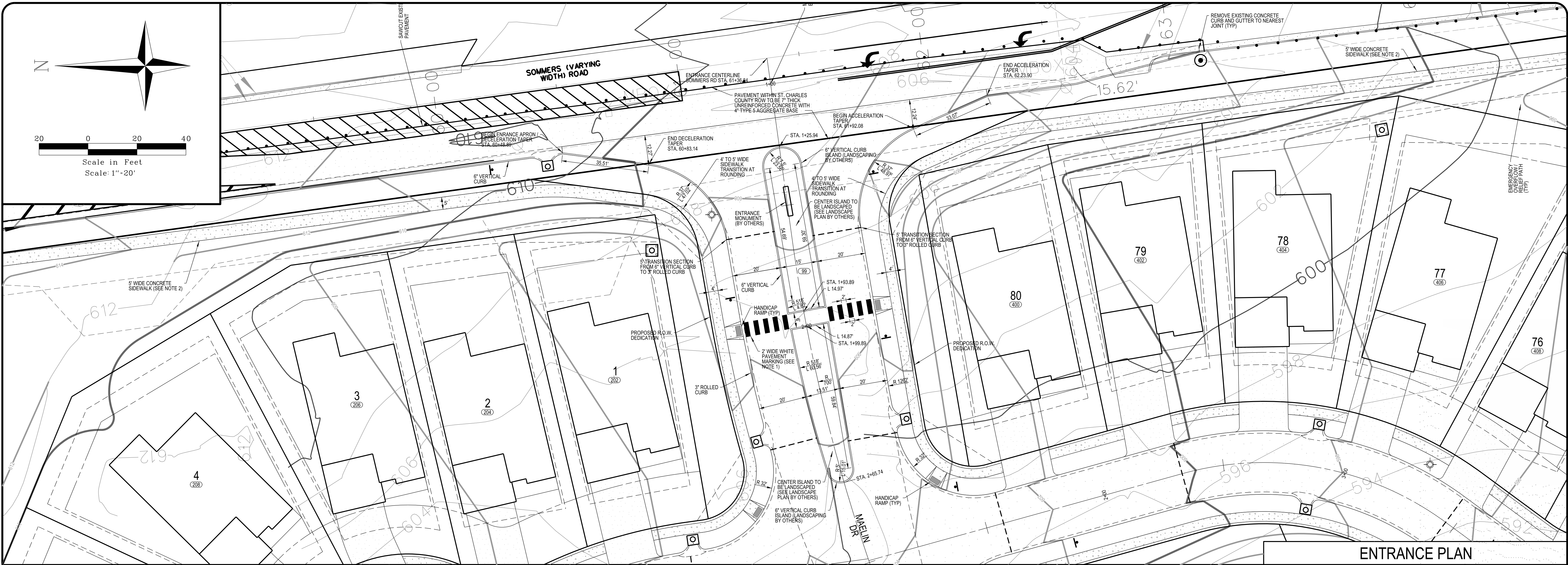
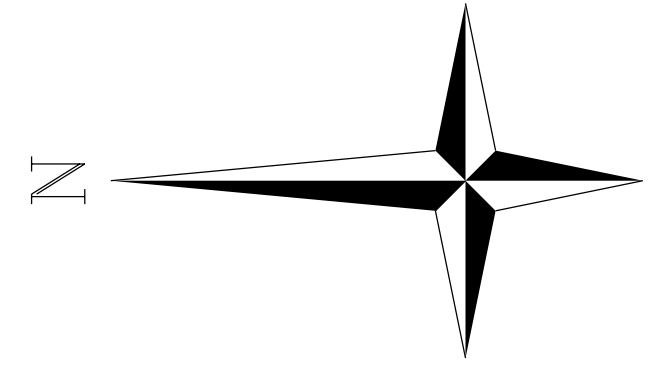


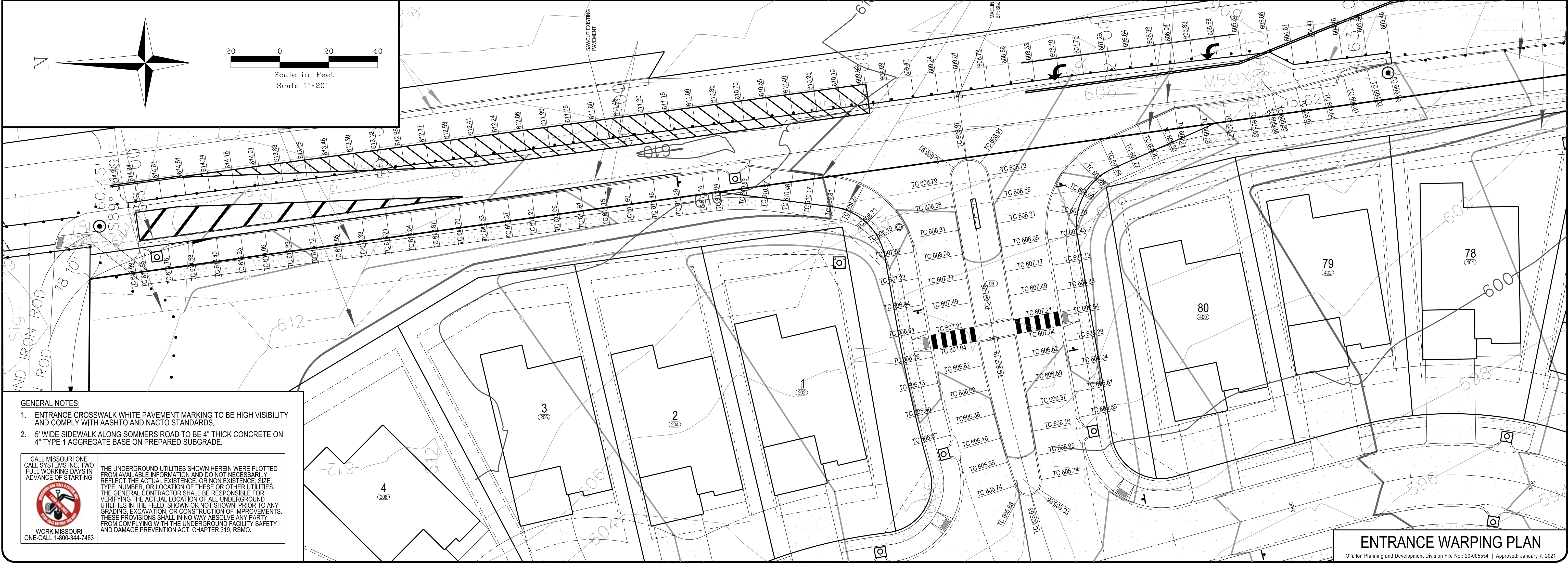
Scale in Feet
Scale: 1"=20'



ENTRANCE PLAN



Scale in Feet
Scale: 1"=20'



ENTRANCE WARPING PLAN

- GENERAL NOTES:**
- ENTRANCE CROSSWALK WHITE PAVEMENT MARKING TO BE HIGH VISIBILITY AND COMPLY WITH AASHTO AND NACTO STANDARDS.
 - 5' WIDE SIDEWALK ALONG SOMMERS ROAD TO BE 4" THICK CONCRETE ON 4" TYPE 1 AGGREGATE BASE ON PREPARED SUBGRADE.

CALL MISSOURI ONE CALL SYSTEMS INC. TWO FULL WORKING DAYS IN ADVANCE OF STARTING

THE UNDERGROUND UTILITIES SHOWN HEREIN WERE PLOTTED FROM AVAILABLE INFORMATION AND DO NOT NECESSARILY REFLECT THE ACTUAL EXISTENCE OR NON-EXISTENCE, SIZE, TYPE, NUMBER, OR LOCATION OF THESE OR OTHER UTILITIES. THE GENERAL CONTRACTOR SHALL BE RESPONSIBLE FOR VERIFYING THE ACTUAL LOCATION OF ALL UNDERGROUND UTILITIES IN THE FIELD, SHOWN OR NOT SHOWN, PRIOR TO ANY GRADING, EXCAVATION, OR CONSTRUCTION OF IMPROVEMENTS. THESE PROVISIONS SHALL IN NO WAY ABSOLVE ANY PARTY FROM COMPLYING WITH THE UNDERGROUND FACILITY SAFETY AND DAMAGE PREVENTION ACT, CHAPTER 319, RSMO.

WORK MISSOURI
ONE-CALL 1-800-344-7483



MCKELVEY HOMES
Building A Tradition of Excellence Since 1888
218 Chesterfield Towne Center
Chesterfield, MO 63005
Phone: (636) 530-6800

VOLZ Incorporated
10849 Indian Head Indl. Blvd.
St. Louis, Missouri 63132
314.950.1250 Fax
www.volzinc.com
Aurumity #203

RYAN L. HOLMES
Professional Engineer
PE-2017018988

SOMMERLIN

ENTRANCE PLAN & WARPING

Design By: R/L
Drawn By: R/L
Checked By: R/L

06-28-21
C50

Volz Project # 22074

H:\CAD\22000-22999\22074\ImpPlans\22074 - C50 Entrance Plan & Warping.dgn Default 6/20/2021 8:55:03 AM Plotted by rhomes Plot Scale: 20.00000 / in. Plot Driver: volz15.pdf.plt,ig Pen Table: volz15.pdf.tbl