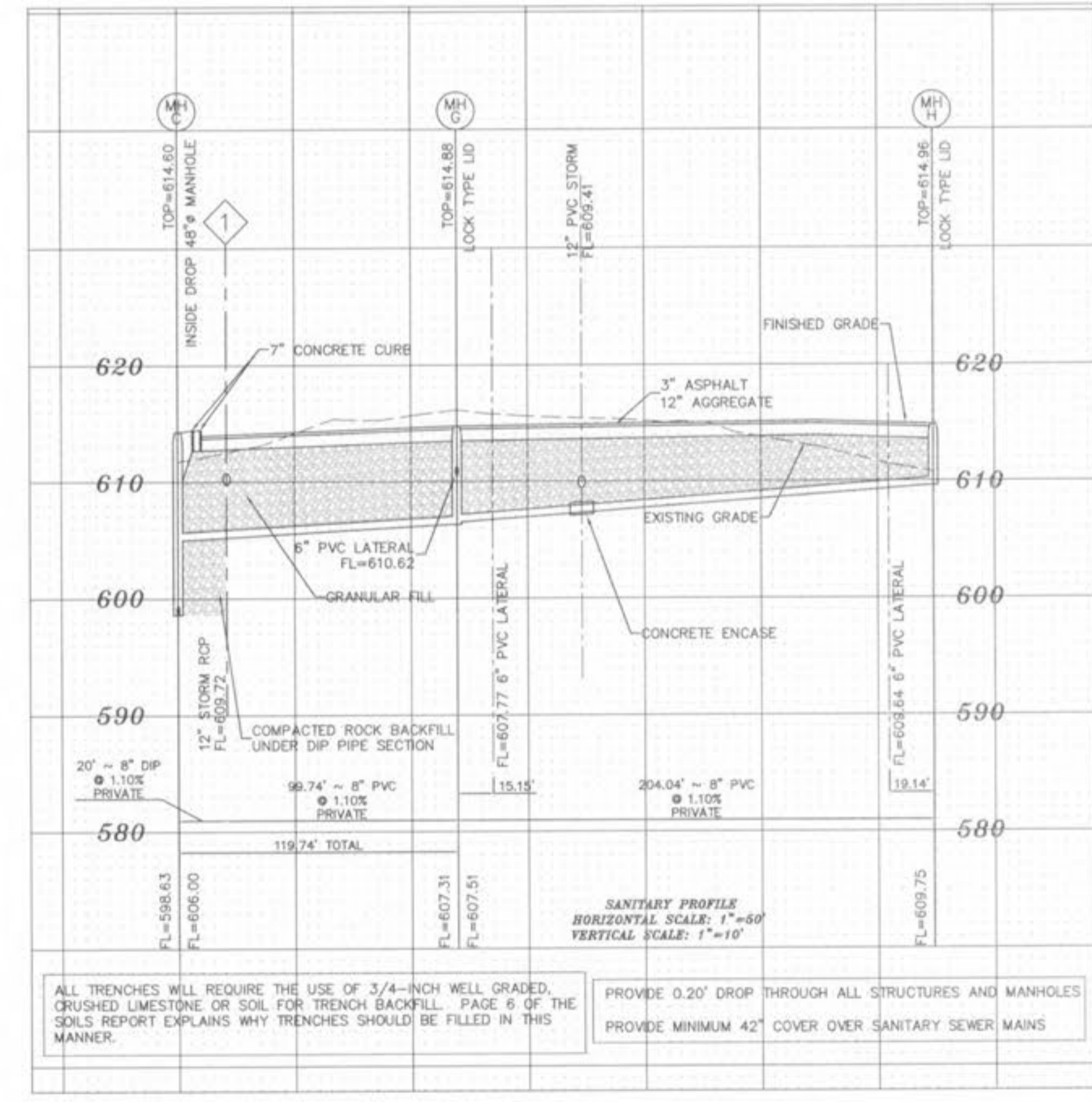
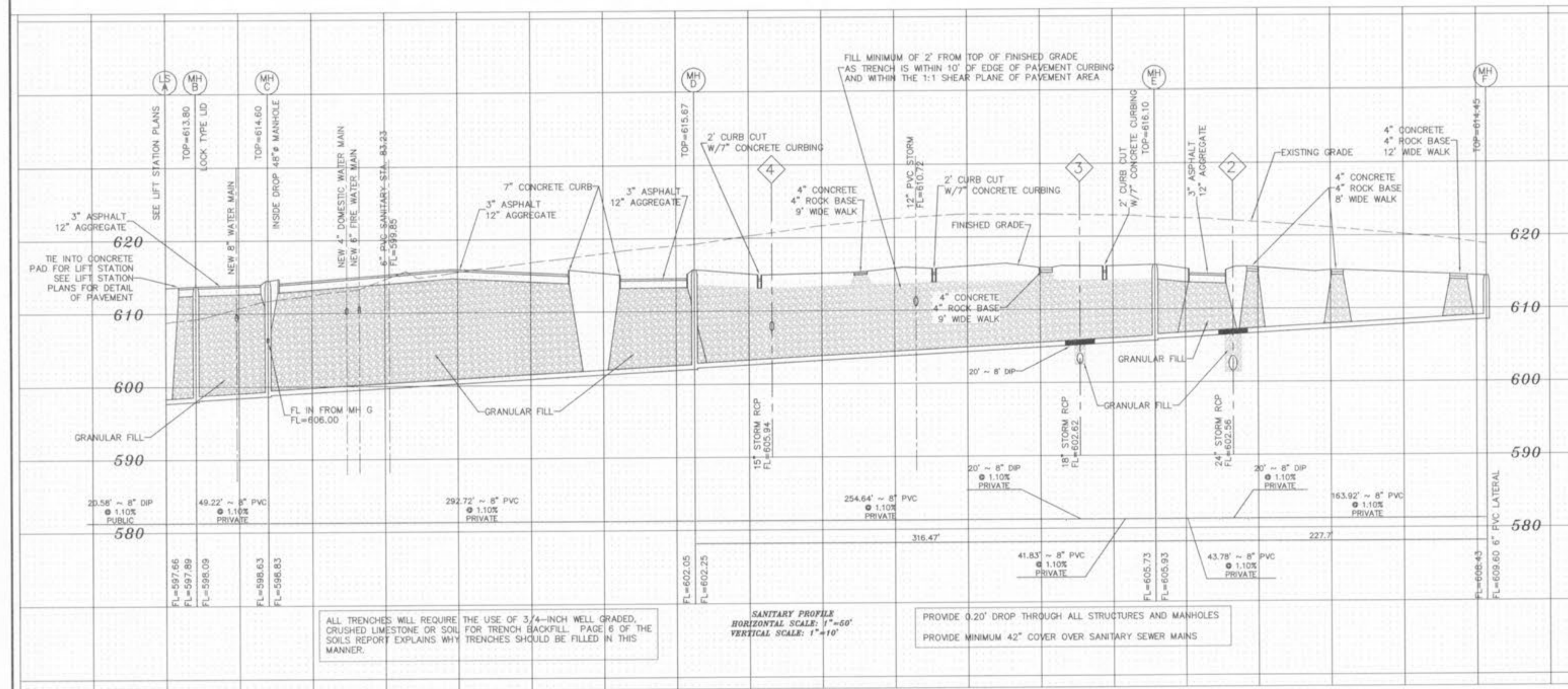
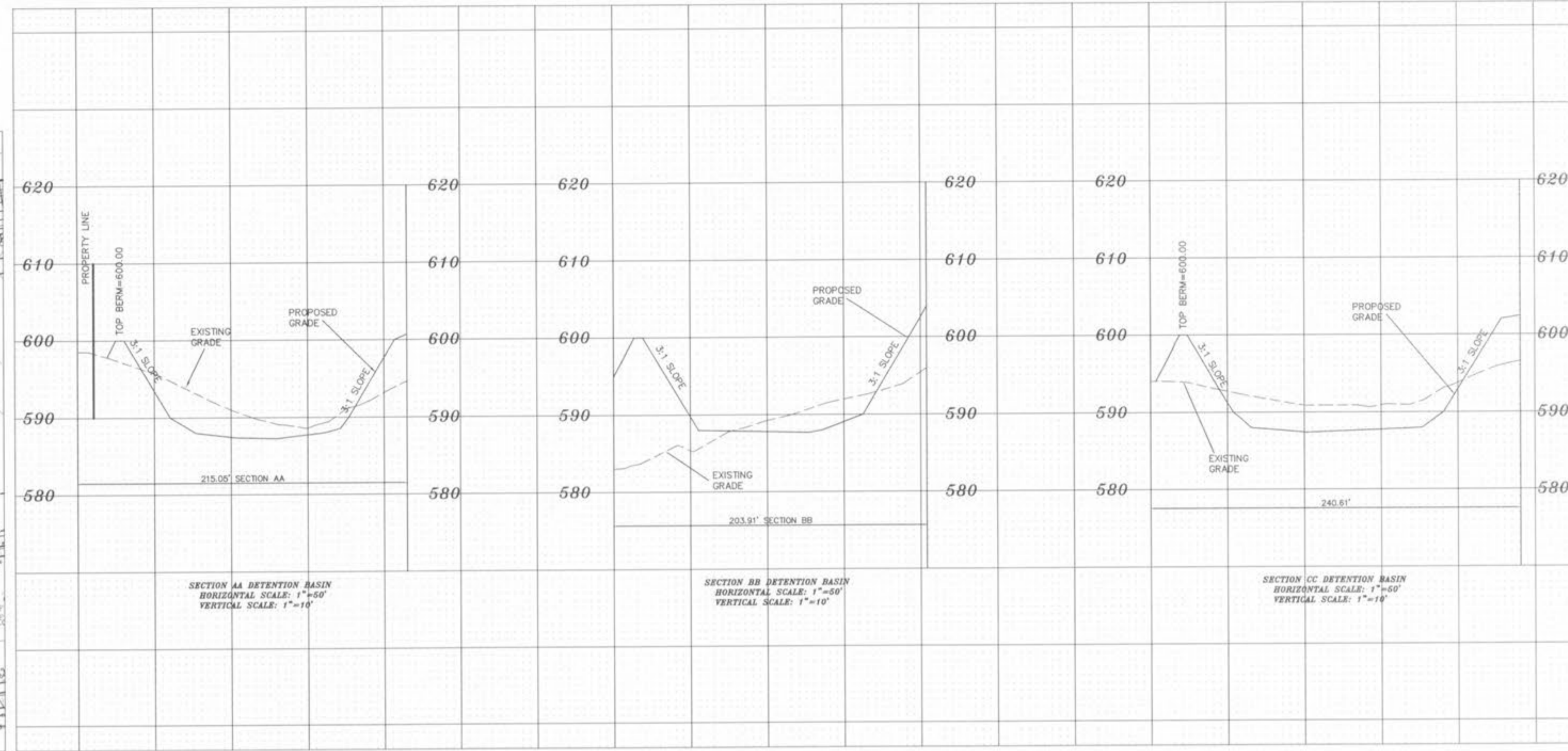
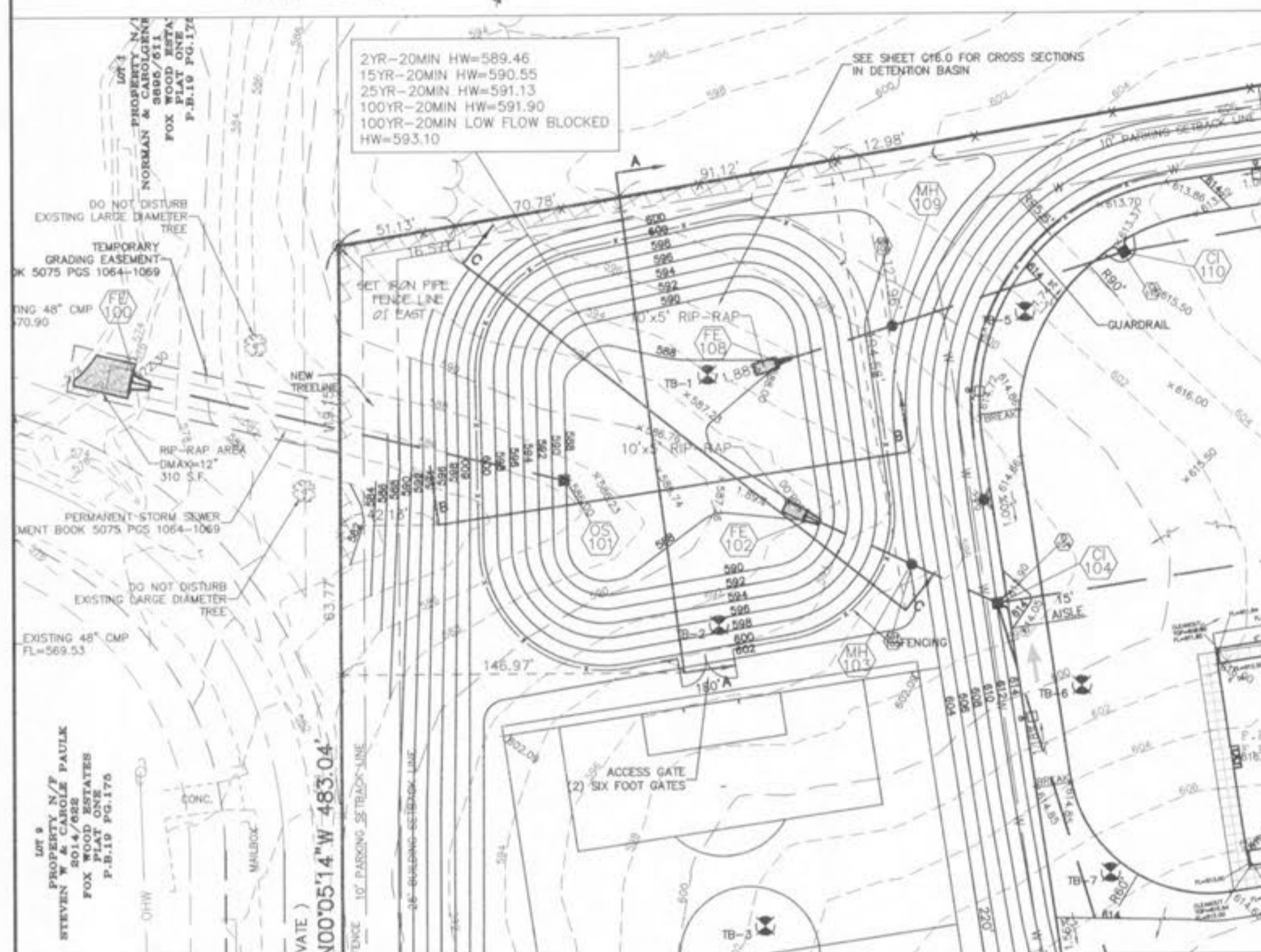


GRAPHIC SCALE

( IN FEET )  
1 inch = 50 ft.



SOMMERS ROAD ELEMENTARY SCHOOL - PHASE 1, 1.5 AND 2  
2523 SOMMERS ROAD  
WENTZVILLE, R-IV SCHOOL DISTRICT  
O'FALLON, MISSOURI



CONSULTING ENGINEERS:  
AGC USE ENGINEERING ASSOC.  
BAX ENGINEERING INC.  
DENNIS G. GLORE, INC.

HOENER ASSOCIATES, INC.  
ARCHITECTS  
ST. LOUIS, MISSOURI

job no. 05-06B  
date issued  
AUG 15, 2008  
date revised

drawn by SWR  
checked by SWR  
sheet no.

C16.0  
PROFILES

JULY 17, 2008 CITY FILE #3407.03

E:\DWG\120000\PLUS\12495A WENTZVILLE SCHOOL-ELEMENTARY SOMMERS ROAD\CONSTRUCTION\12495A\CON.DWG, PROFILES-CD-16, 1/2/2009 4:39:11 PM, 1:1, Sta 36 SWR