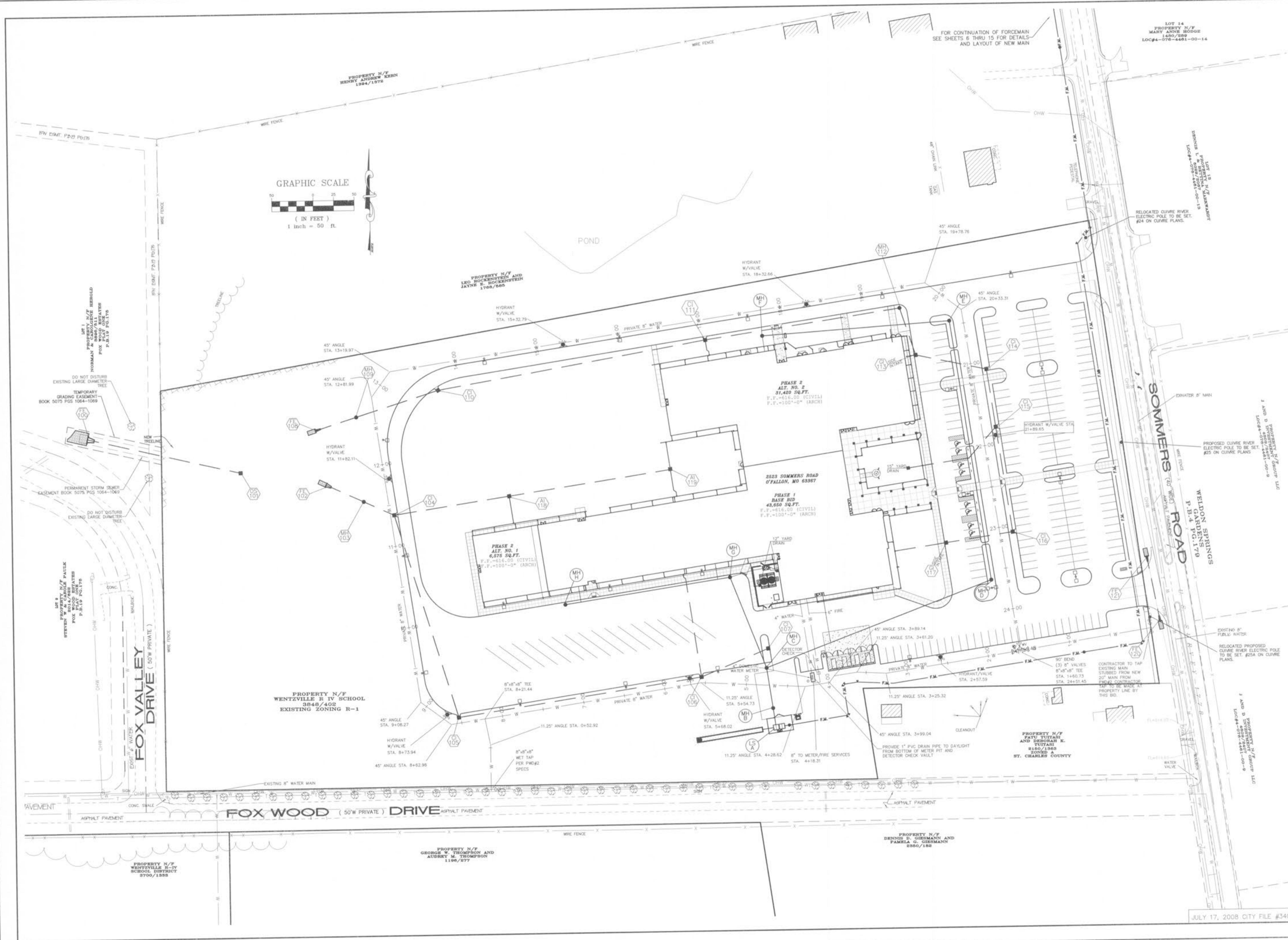


E:\DWG\12000\PLUS\12495A WENTZVILLE SCHOOL-ELEMENTARY SOMMERS ROAD\CONSTRUCTION\12495A\CON.DWG, WATER PLAN-CD-19, 1/2/2009 4:38:48 PM, 1:1, Sta 36 SWR



SOMMERS ROAD ELEMENTARY SCHOOL - PHASE 1, 1.5 AND 2
2523 SOMMERS ROAD

PROPERTY N/F HENRY ANDREW KEHN 1384/1872
PROPERTY N/F LEO ROCKENSTEIN AND JAYNE S. ROCKENSTEIN 1766/688
PROPERTY N/F WENTZVILLE R-IV SCHOOL DISTRICT 3848/402 EXISTING ZONING R-1
PROPERTY N/F FAYE TUSTANI AND DEBORAH K. TUSTANI 8100/1363 ZONED A ST. CHARLES COUNTY
PROPERTY N/F DENNIS B. GIERMANN AND PAMELA G. GIERMANN 2860/182

CONSULTING ENGINEERS:
HOENER ASSOCIATES, INC.
ARCHITECTS
ST. LOUIS, MISSOURI

CONSULTING ENGINEERS:
ABS CONSULTING, INC.
MECH/ELEC/PLUMB
CIVIL
FOOD SERVICE

WENTZVILLE R-IV SCHOOL DISTRICT
O'FALLON, MISSOURI

251 Polk West Blvd.
St. Charles, MO 63301
636-269-5532
636-269-5533
FAX 636-1718

ALL DIMENSIONS MUST BE VERIFIED AT BUILDING BEFORE WORK IS EXECUTED. THIS DRAWING IS THE PROPERTY OF THE ARCHITECTS AND SHALL NOT BE COPIED OR DUPLICATED WITHOUT THEIR CONSENT.
job no. 05-06B
date issued
AUG 15, 2008
date revised
10-24-08 CITY COMMENTS
12-4-08 CITY COMMENTS
12-24-08 CITY COMMENTS

drawn by SWR
checked by SWR
sheet no.

C19.0

SITE WATER PLAN

JULY 17, 2008 CITY FILE #3407.03