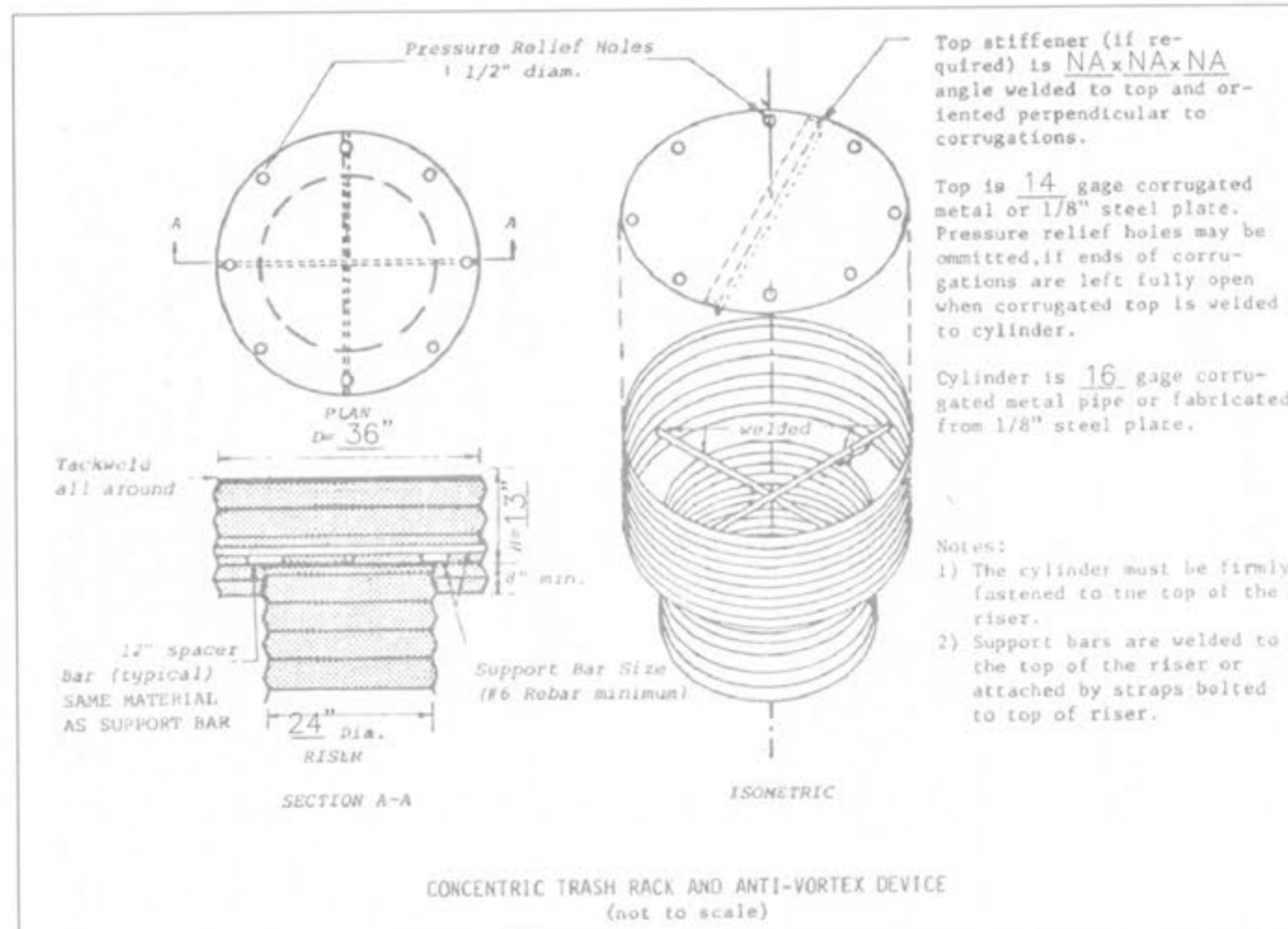
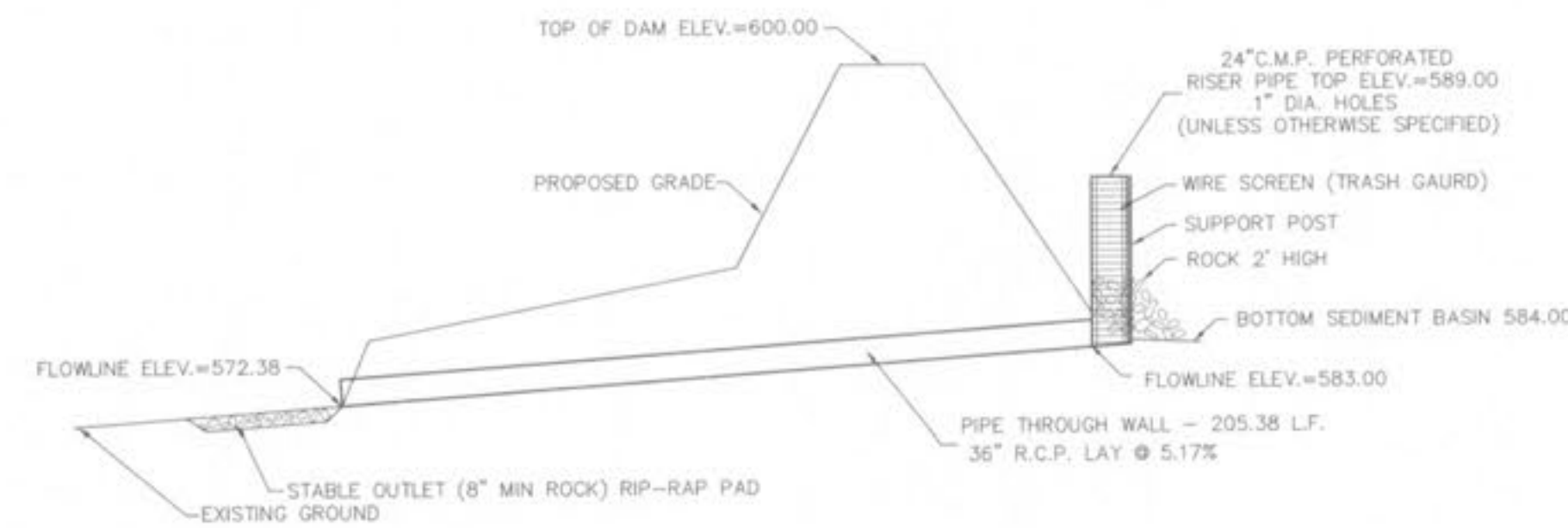


ROUND PIPE				HORIZONTAL ELLIPTICAL PIPE			
Inside Diameter of Pipe (Inches)	"W" Payline Width of Trench (Inches)	"W" Payline Width of Trench (Feet)	Pay-volumes cu. ft. per ft. Concrete Encasement	Inside Diameter of Pipe (Inches)	"W" Payline Width of Trench (Inches)	"W" Payline Width of Trench (Feet)	Pay-volumes cu. ft. per ft. Concrete Encasement
4	28	2.33	3.20				
6	28	2.33	3.46				
8	28	2.33	3.70				
10	28	2.33	3.86				
12	28	2.33	3.98				
15	32	2.67	4.89				
18	35	2.92	5.63	14 X 23	41	3.42	5.94
21	39	3.25	6.61				
24	42	3.50	7.39	19 X 30	49	4.08	7.68
27	45	3.75	8.18	22 X 34	53	4.42	8.61
30	49	4.08	9.30	24 X 38	58	4.83	9.70
33	53	4.42	10.53	27 X 42	62	5.17	10.71
36	56	4.67	11.43	29 X 45	66	5.50	11.72

TABLE NO. 1  
PAYLINE WIDTHS OF TRENCH AND  
PAY-QUANTITIES OF CONCRETE

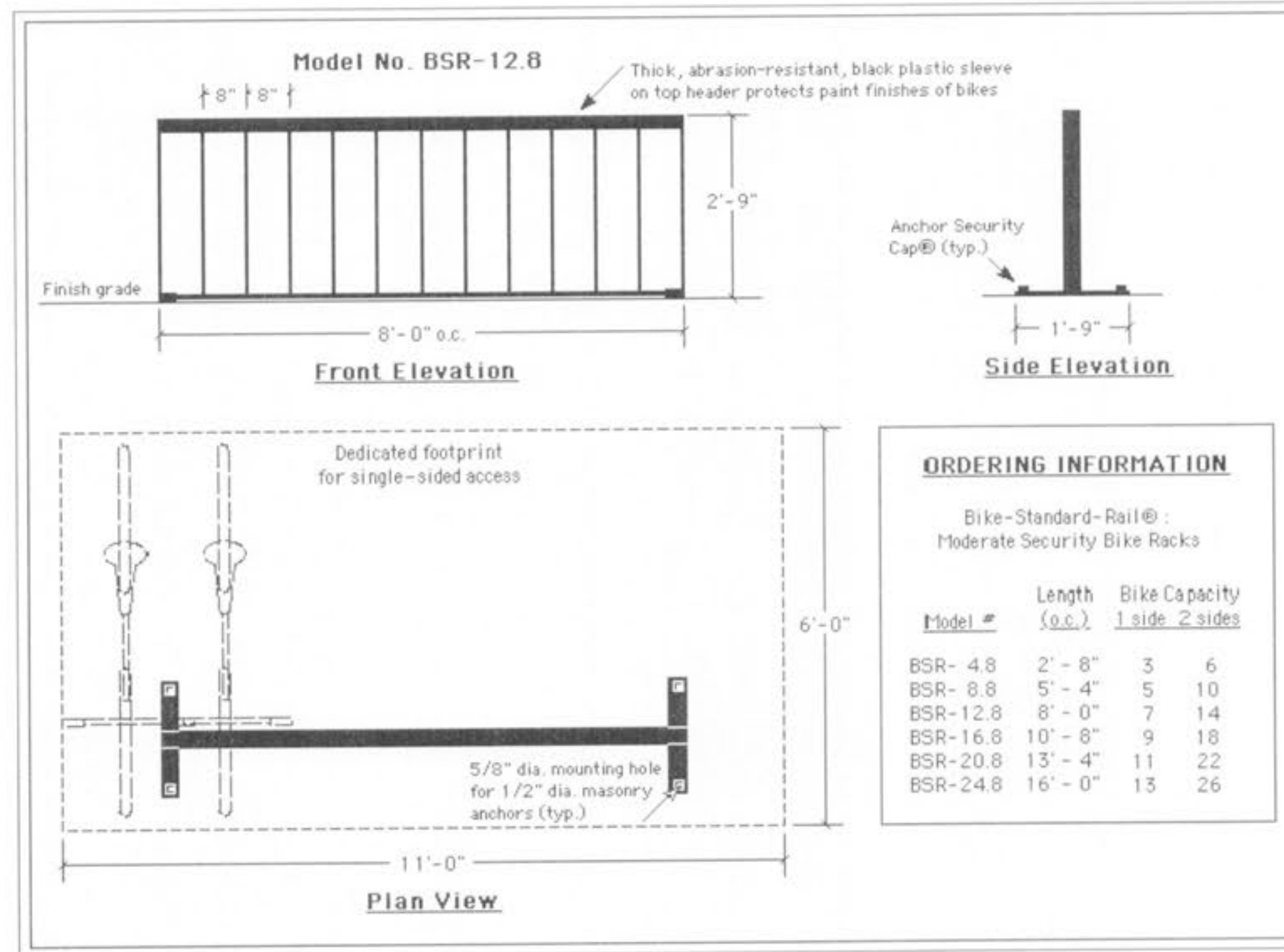


SEDIMENT BASIN



TEMPORARY SEDIMENT BASIN DETAIL  
NOT TO SCALE

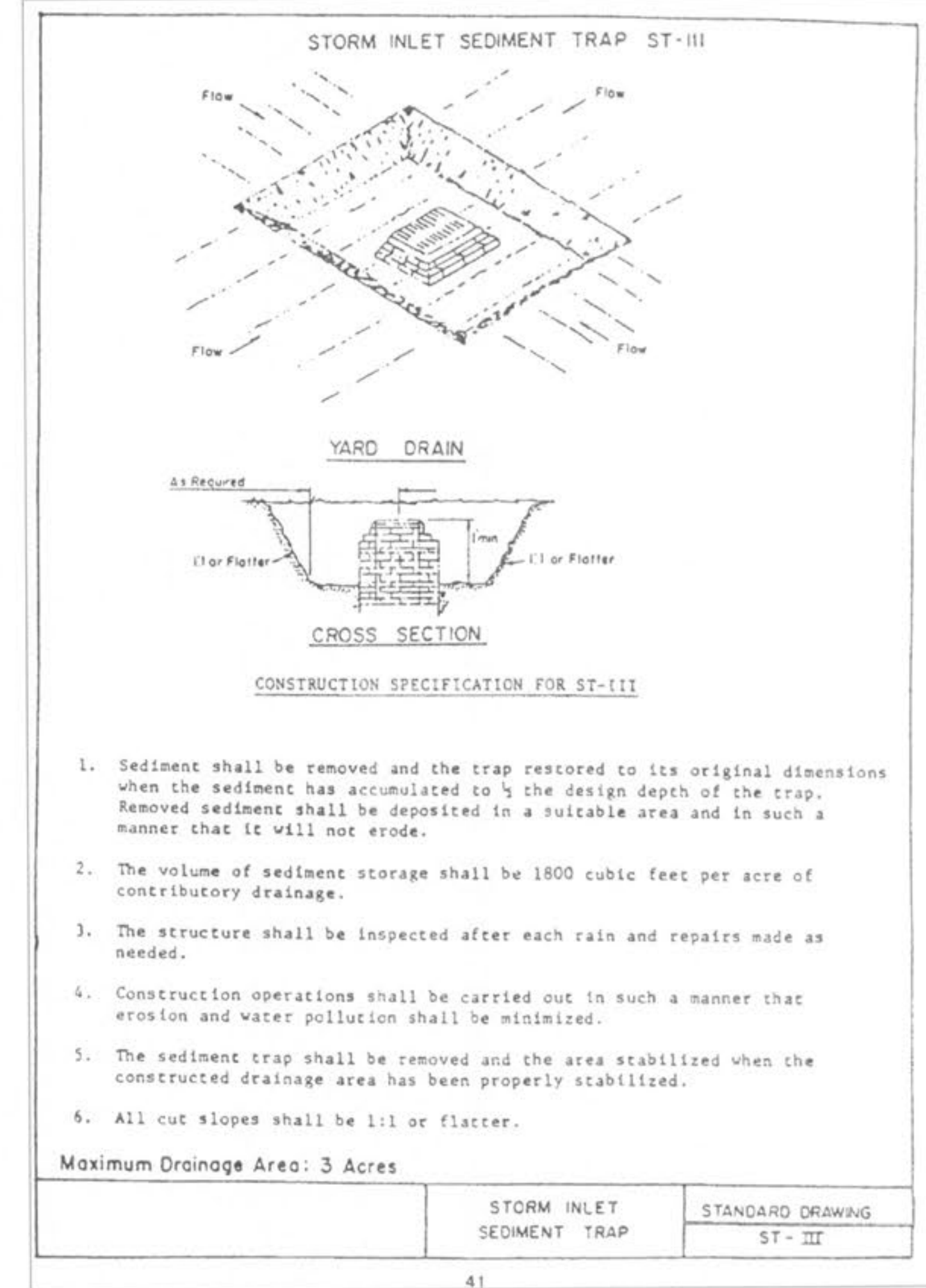
NOTE: PAINT MARK @ ELEV. 586.30 (2.70 FEET BELOW RISER CREST ELEV.) FOR CLEANOUT OF SEDIMENT BASIN.  
THE STANDPIPE SYSTEM WILL BE REMOVED PRIOR TO THE OUTFALL STORM SEWER CONNECTION



ORDERING INFORMATION

Bike-Standard-Rail@ :  
Moderate Security Bike Racks

Model #	Length (o.c.)	Bike Capacity 1 side	Bike Capacity 2 sides
BSR-4.8	2'-8"	3	6
BSR-8.8	5'-4"	5	10
BSR-12.8	8'-0"	7	14
BSR-16.8	10'-8"	9	18
BSR-20.8	13'-4"	11	22
BSR-24.8	16'-0"	13	26

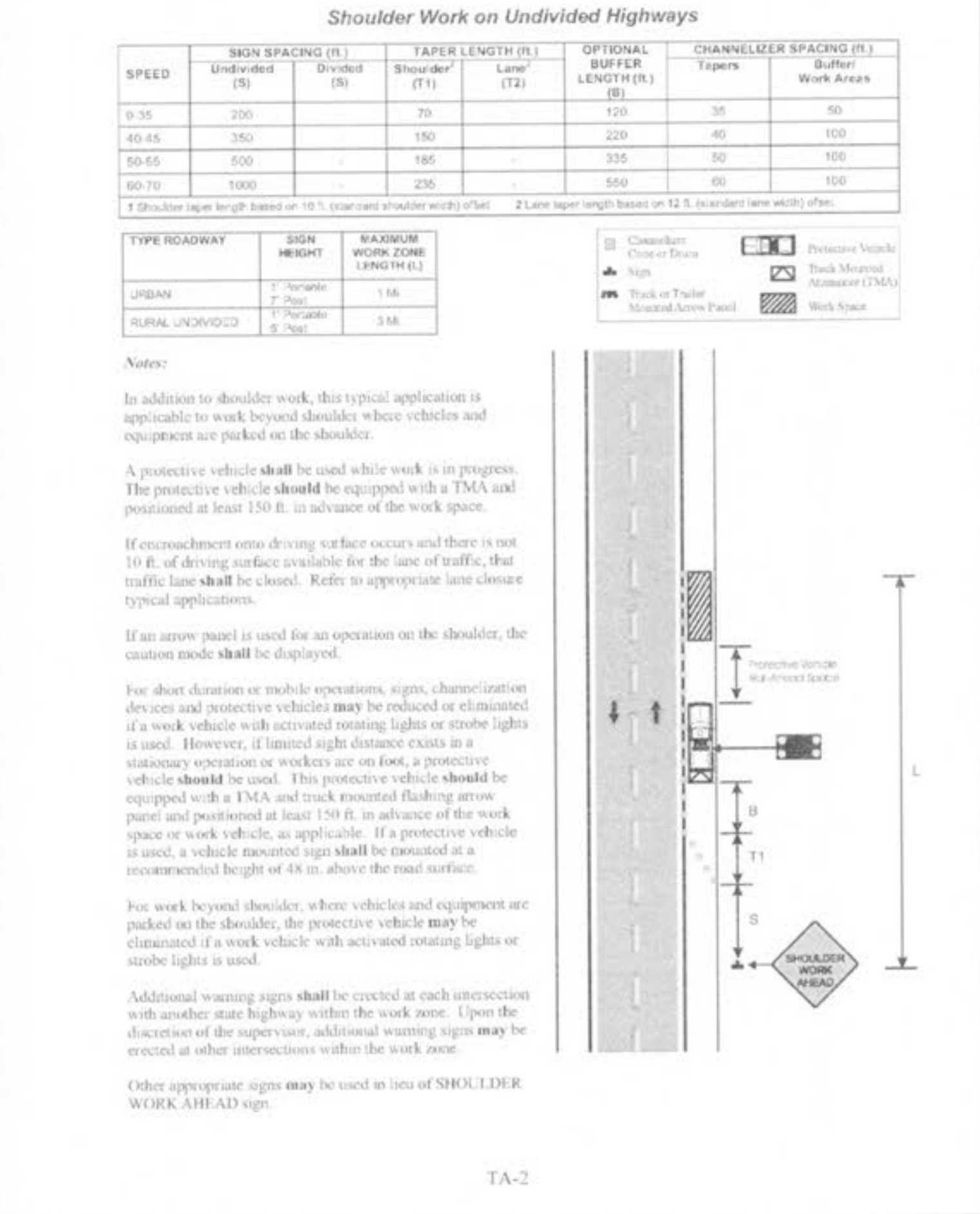
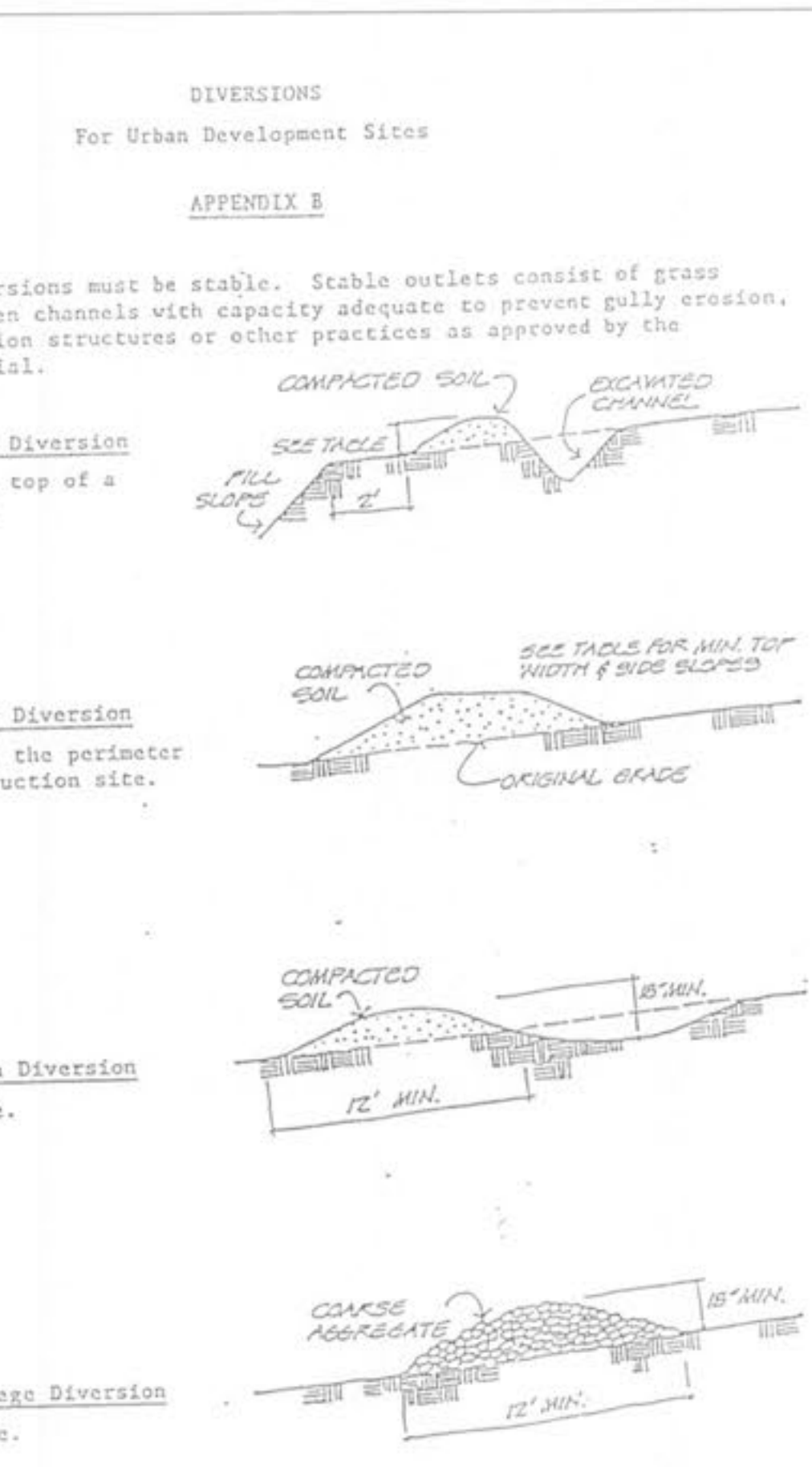


Maximum Drainage Area: 3 Acres

STORM INLET  
SEDIMENT TRAP

STANDARD DRAWING  
ST - III

41



TA-2

NOTE:  
CONTRACTOR SHALL COORDINATE ALL  
TRAFFIC CONTROL WITH ST. CHARLES  
COUNTY AND THEIR ROADWAY PROJECT.



SOMMERS ROAD ELEMENTARY SCHOOL - PHASE 1, 1.5 AND 2  
2523 SOMMERS ROAD  
O'FALLON, MISSOURI  
WENTZVILLE R-IV SCHOOL DISTRICT

221 Point West Blvd.  
St. Charles, MO 63301  
636-262-5532  
636-262-1718



STRUCTURAL  
MECHANICAL/ELECTRICAL/PLUMB  
CONSULTING ENGINEERING ASSOC.  
CONSULTING ENGINEERING ASSOC.  
FOOD SERVICE

CONSULTING ENGINEERS:  
ABS CONSULTING, INC.  
ACCURATE ENGINEERING ASSOC.  
DENNIS G. GLONE, INC.

HOENER ASSOCIATES, INC.  
ARCHITECTS  
ST. LOUIS, MISSOURI

ALL DIMENSIONS MUST BE  
VERIFIED AT BUILDING BEFORE  
WORK IS EXECUTED. THIS  
DRAWING IS THE PROPERTY OF  
THE ARCHITECTS AND SHALL  
NOT BE COPIED OR DUPLICATED  
WITHOUT THEIR CONSENT.

job no. 05-06B  
date issued  
AUG. 15, 2008  
date revised

10-24-08 CITY COMMENTS  
12-4-08 CITY COMMENTS  
12-24-08 CITY COMMENTS

drawn by SWR  
checked by SWR  
sheet no.

C28.0

JULY 17, 2008 CITY FILE #3407.03

DETAILS

BA# 03-12495A