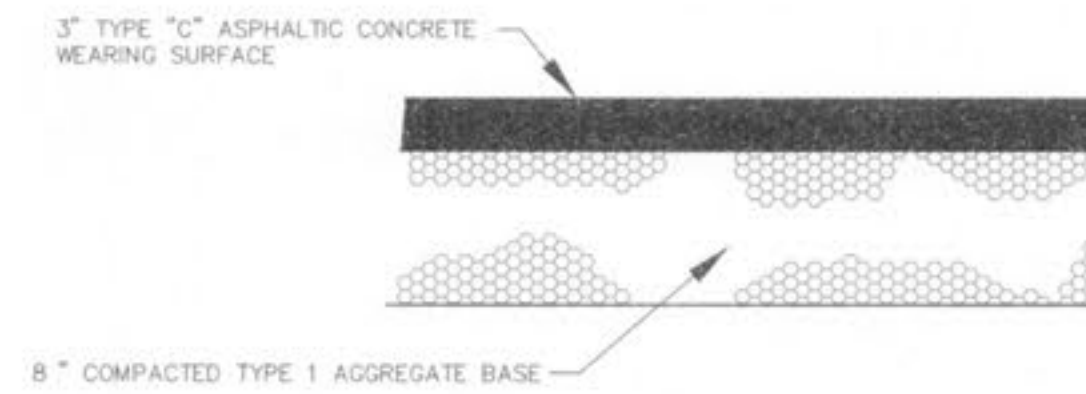
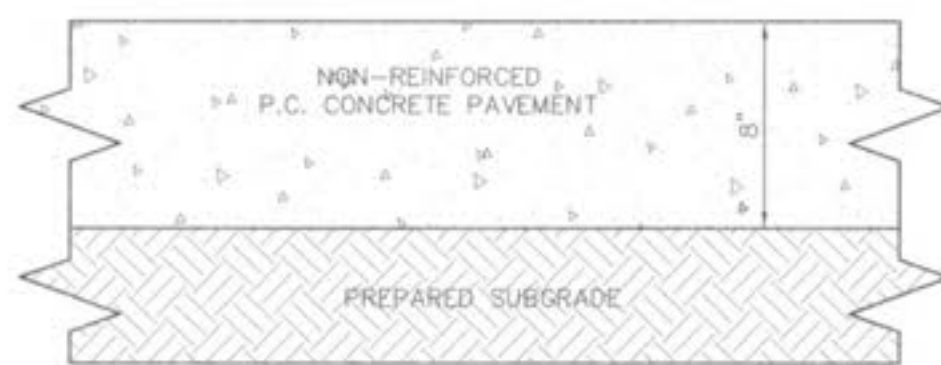


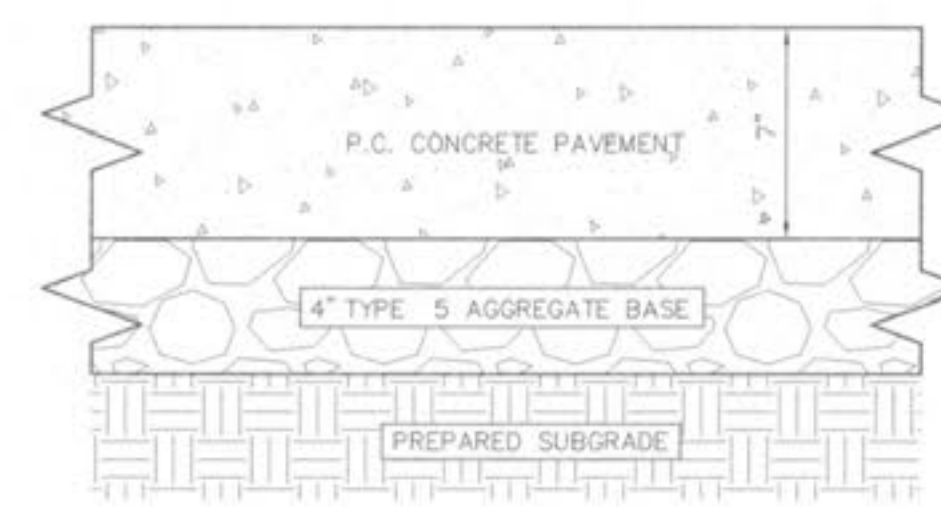
3\"/>



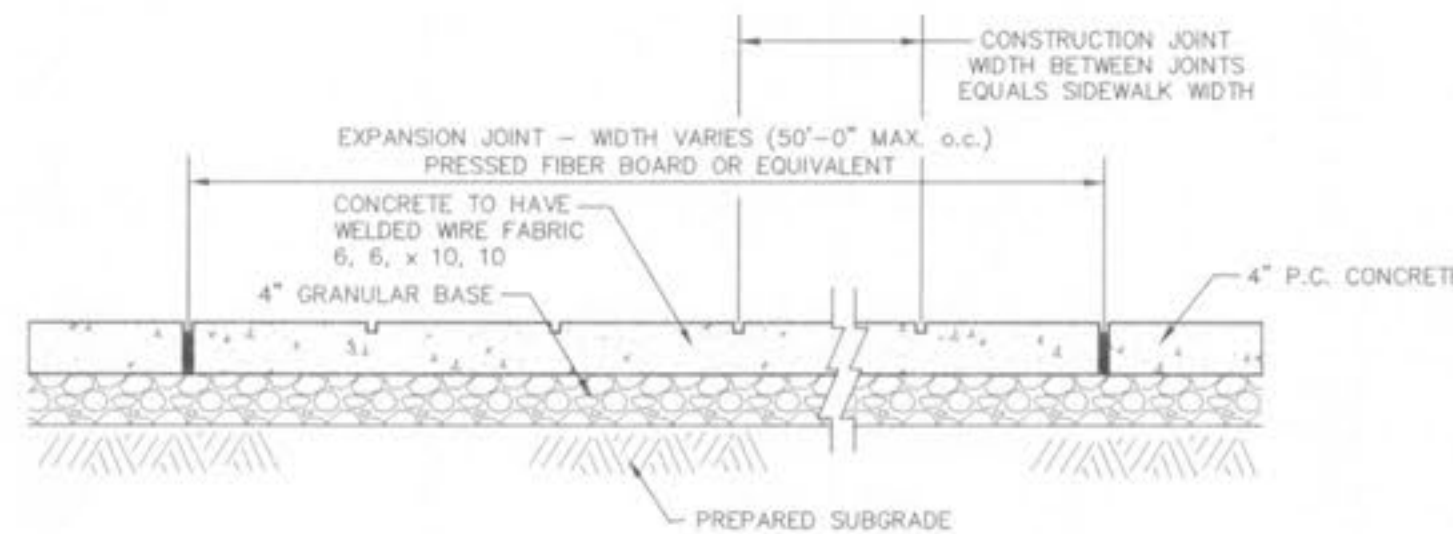
8\"/>



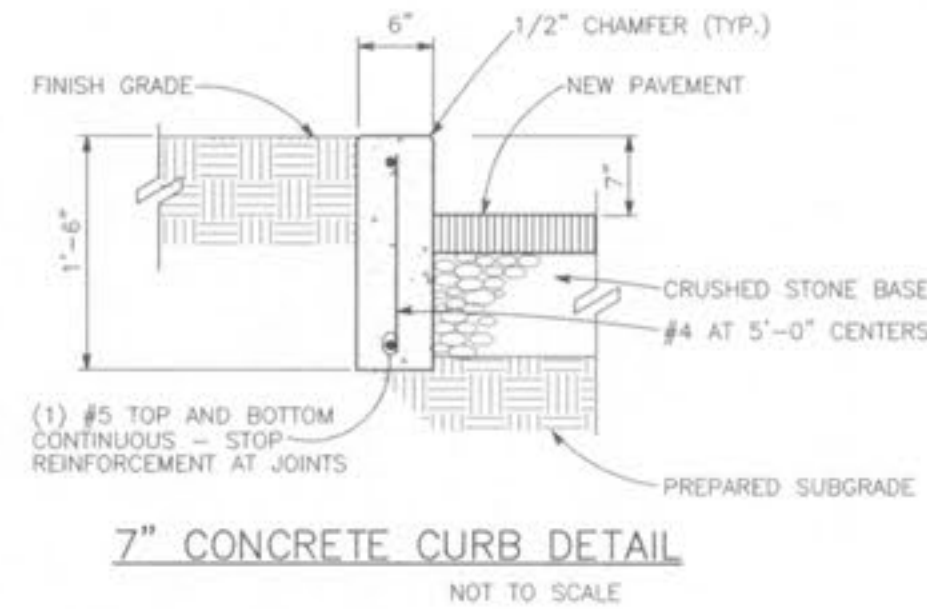
TRASH ENCLOSURE PAVEMENT DETAIL NOT TO SCALE



ENTRANCE PAVEMENT DETAIL NOT TO SCALE



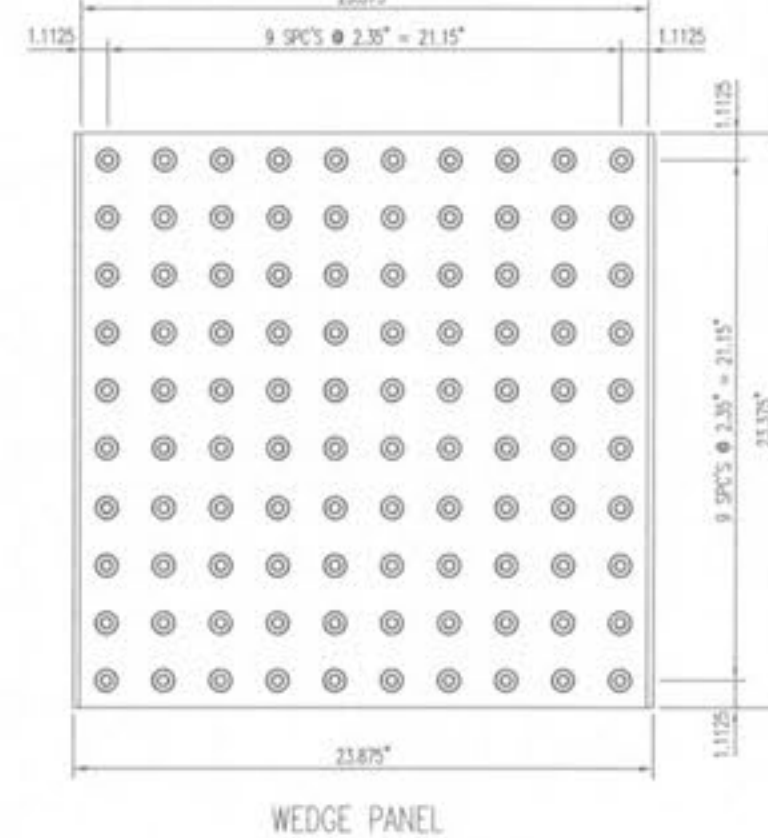
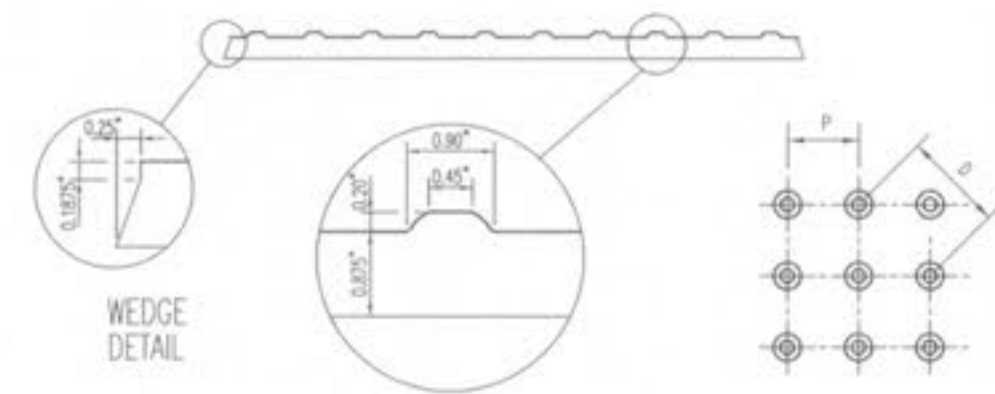
CONCRETE SIDEWALK WITH BASE DETAIL NOT TO SCALE



7\"/>

CASTinTACT™ Warning Panels are the latest innovation in detectable warning systems. A long term solution meeting both state and federal guidelines for handicap detention. CASTinTACT Warning Panels are designed for exterior use at the bottom of curb ramps and other locations such as depressed corners, raised crosswalks and raised intersections, borders of median and islands, at eh edge of transit platforms and where railroad tracks cross the sidewalk to warn people with visual impairments of potential hazards. Detectable warnings must be installed across the full width of ramps, and 24\"/>

CASTinTACT™ are cementitious based concrete panels with the same co-efficient of expansion as the concrete base. 7/8\"/>

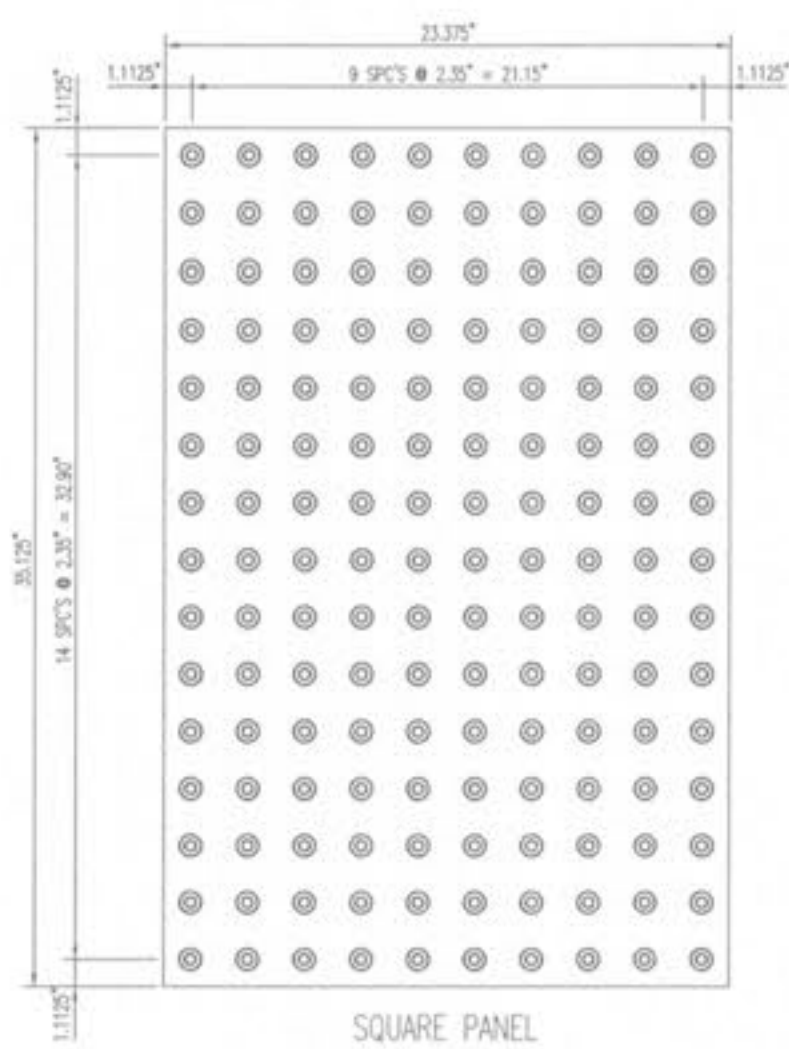


PANEL SIZES AVAILABLE

Wedge Edge Panel includes 1'x2', 2'x2', 2.5'x2', 3'x2' Square Edge Panel includes 2'x2', 3'x2' and 4'x2' Stocking colors are yellow, red, black and white. Custom colors special order.

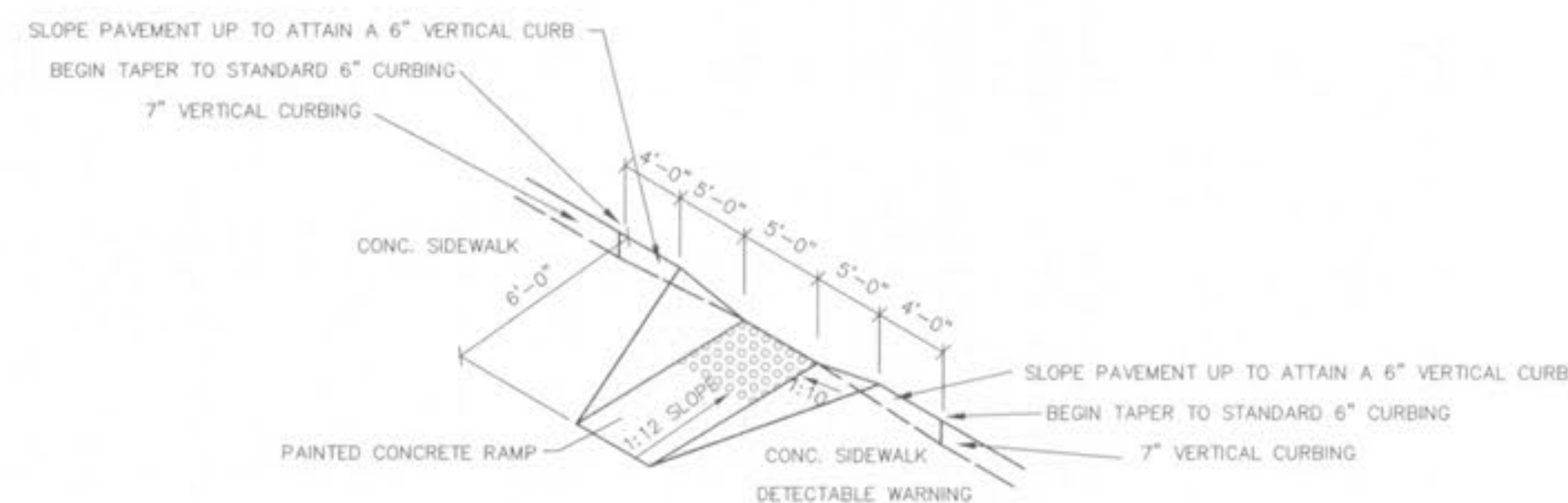
WEDGE DETAIL

DOME SPECIFICATIONS
 Americans with Disabilities Act 4.29.2 Standards
 Dome Base = 0.9\"/>

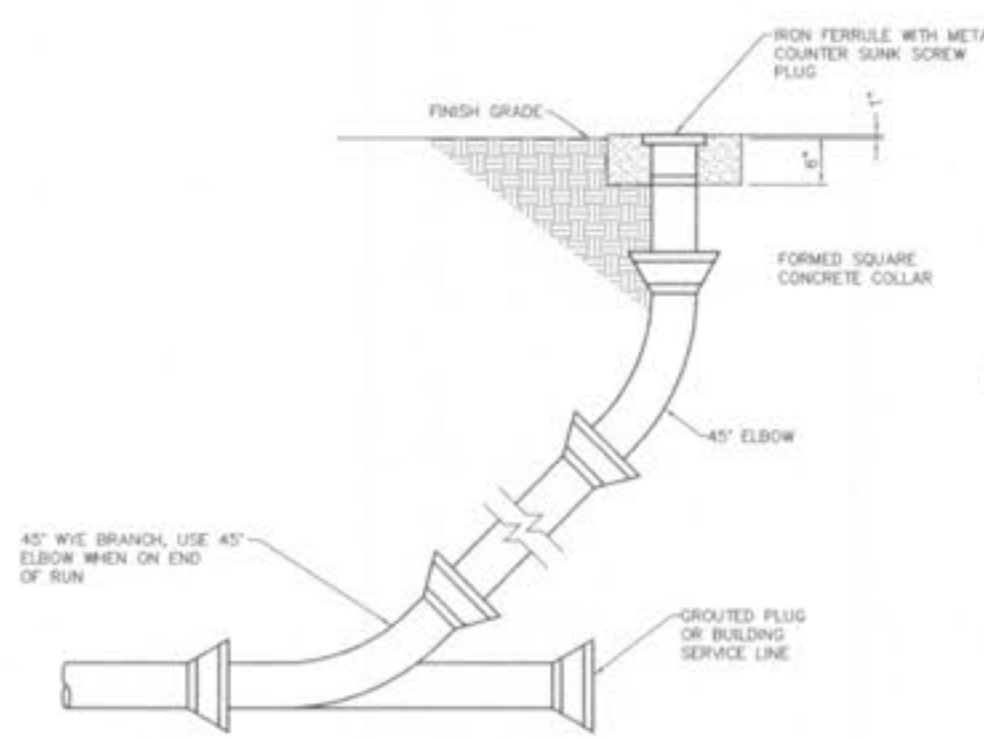


SQUARE PANEL

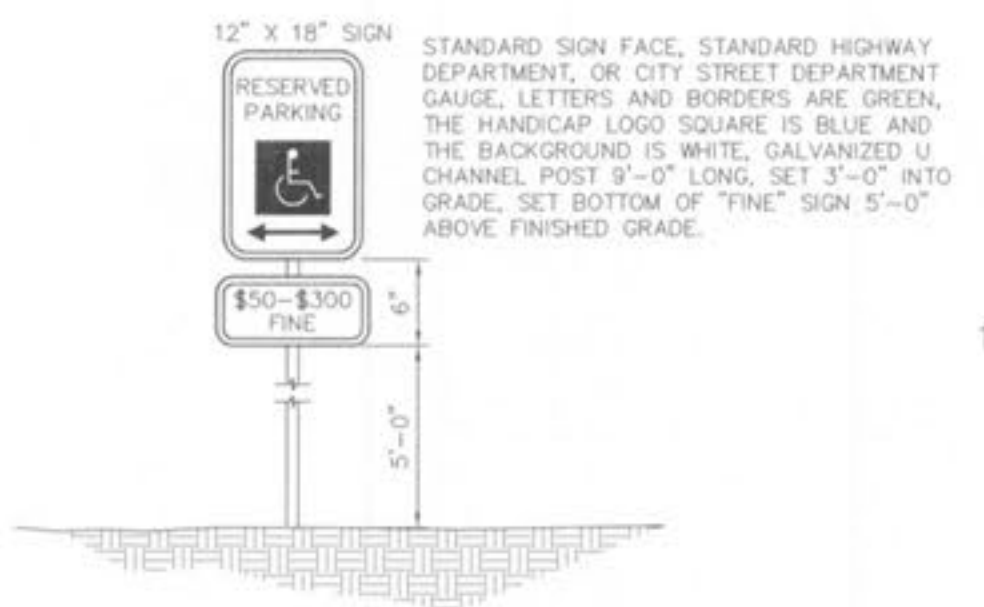
TYPICAL DETAIL OF DETECTABLE WARNING SURFACE NOT TO SCALE



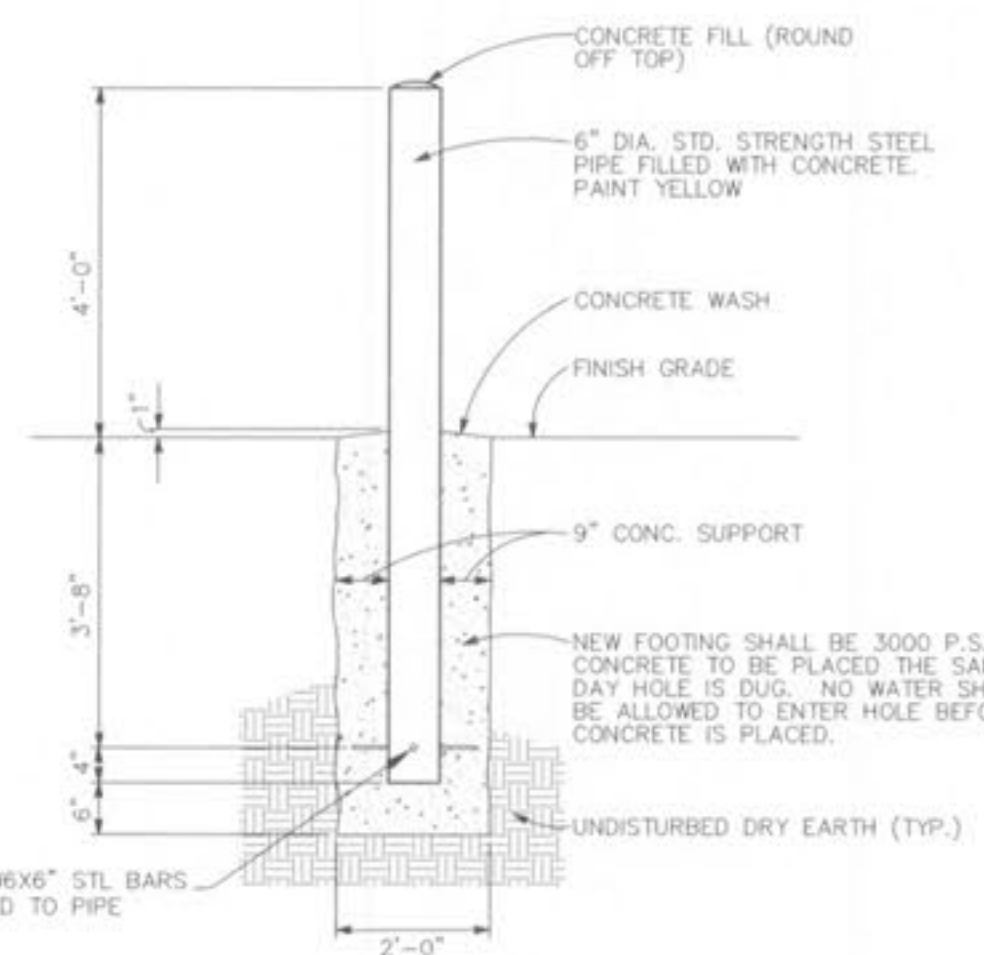
HANDICAPPED RAMP DETAIL NOT TO SCALE



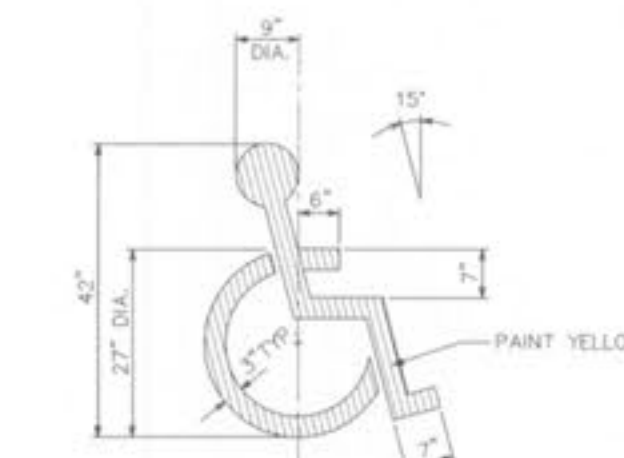
SEWER CLEANOUT NOT TO SCALE



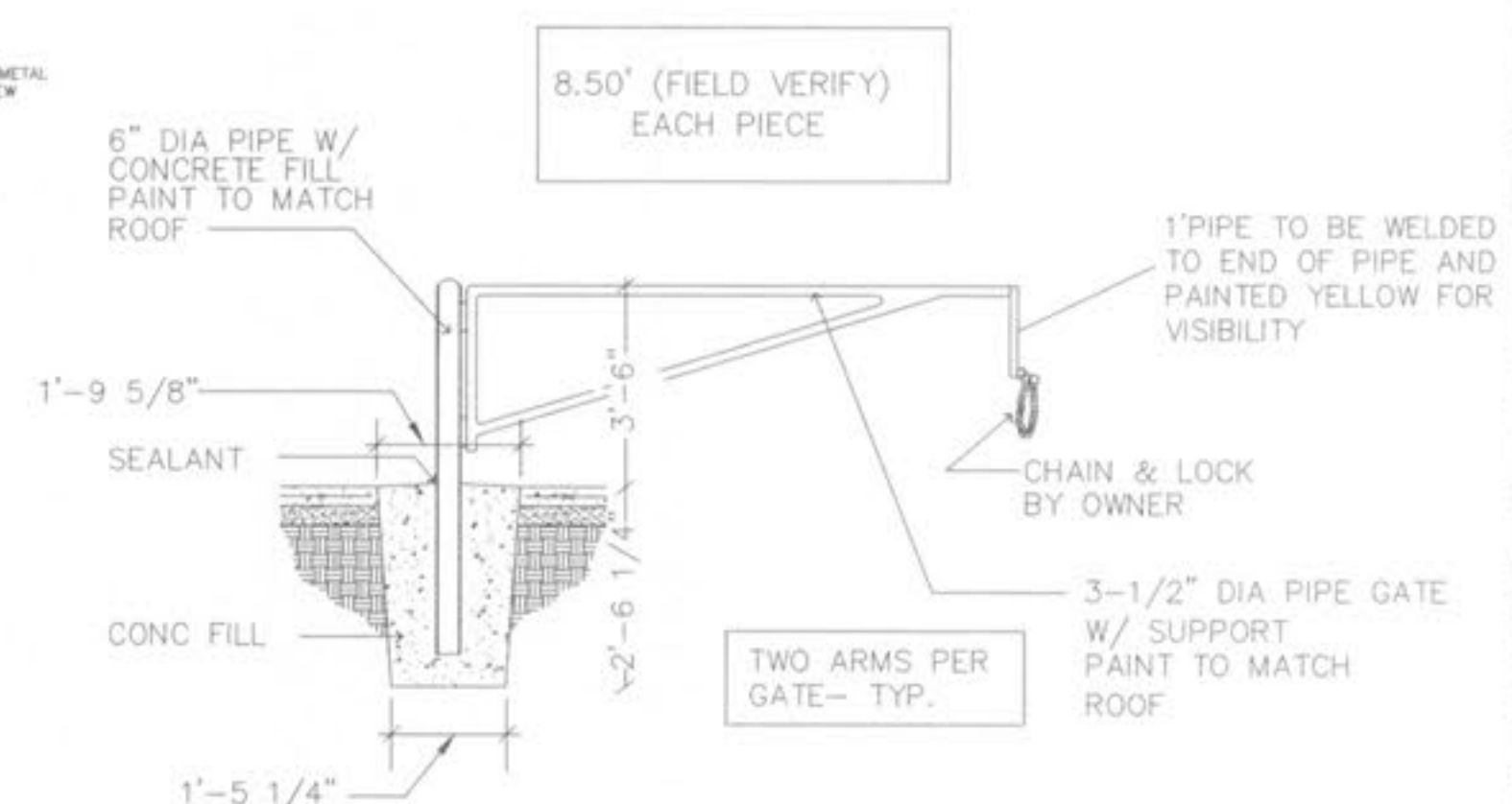
HANDICAP PARKING SIGN (CITY OF O'FALLON) NOT TO SCALE



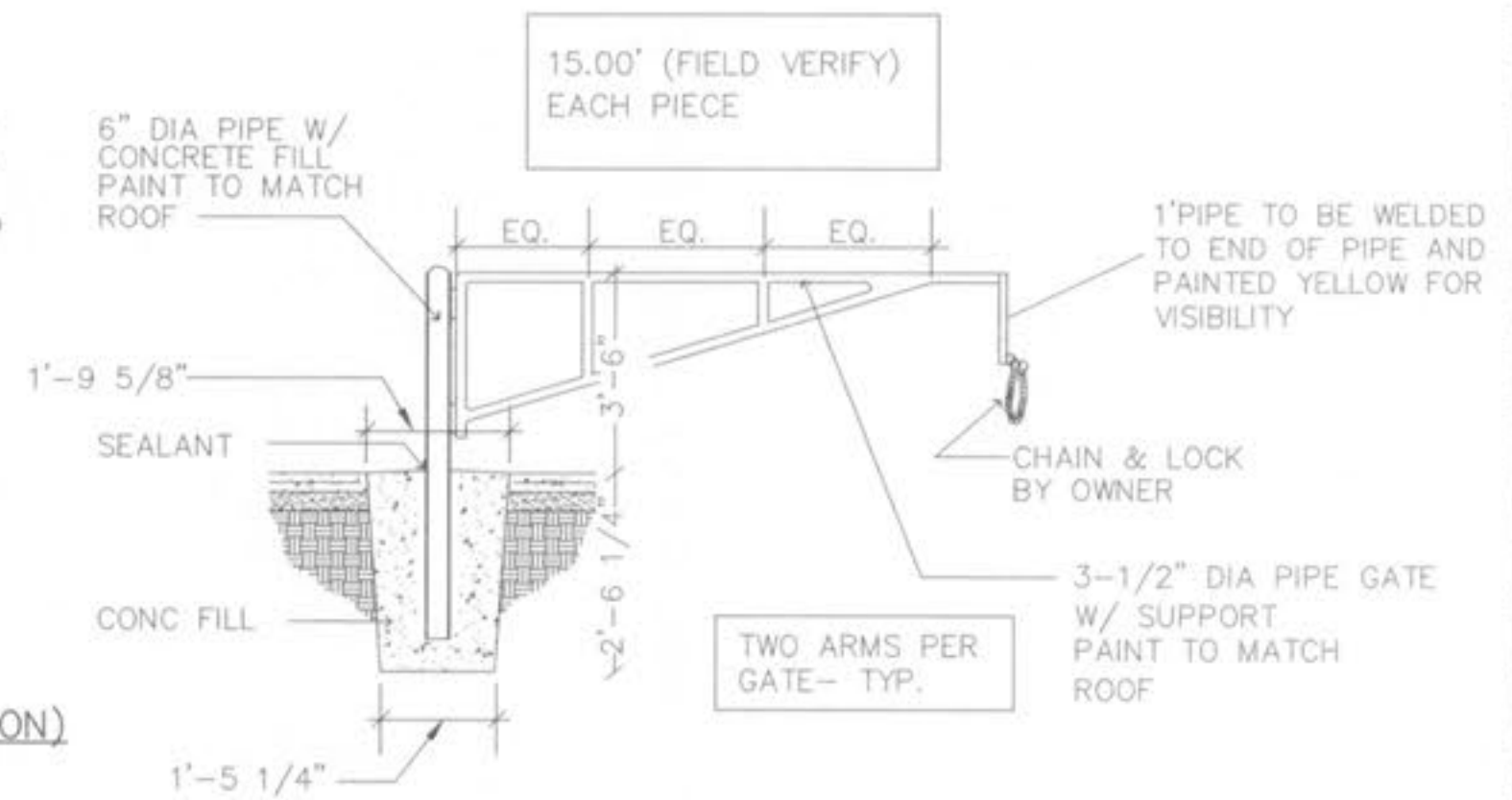
PIPE BOLLARD DETAIL NOT TO SCALE



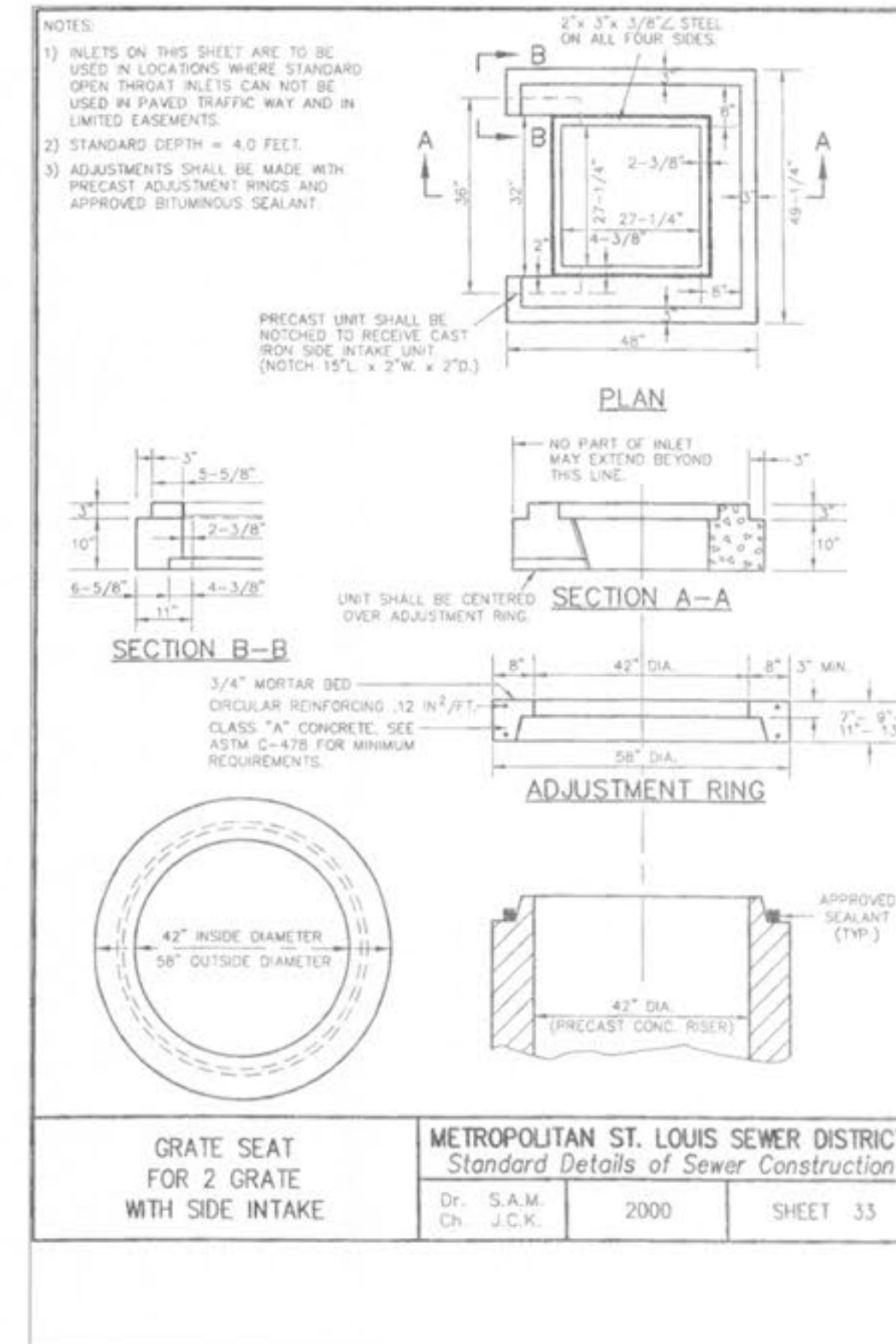
PAINTED HANDICAPPED PARKING SYMBOL NOT TO SCALE



BUS LOOP GATE DETAIL NO SCALE



BUS ENTRANCE GATE DETAIL AT TRASH AREA NO SCALE



GRATE SEAT FOR 2 GRATE WITH SIDE INTAKE

METROPOLITAN ST. LOUIS SEWER DISTRICT Standard Details of Sewer Construction

Dr. S.A.M. 2000 SHEET 33
 Ch. J.C.K.



SOMMERS ROAD ELEMENTARY SCHOOL - PHASE 1, 1.5 AND 2
 2623 SOMMERS ROAD
 WENTZVILLE R-IV SCHOOL DISTRICT
 O'FALLON, MISSOURI

CONSULTING ENGINEERS:
HOENER ASSOCIATES, INC.
 ARCHITECTS
 ST. LOUIS, MISSOURI

STRUCTURAL ENGINEERING ASSOC.
 MECH/ELEC/PLUMB
 CIVIL FOOD SERVICE

221 Point West Bldg.
 St. Charles, MO. 63301
 636-938-5552
 FAX 636-938-1218

ALL DIMENSIONS MUST BE VERIFIED AT BUILDING BEFORE WORK IS EXECUTED. THIS DRAWING IS THE PROPERTY OF THE ARCHITECTS AND SHALL NOT BE COPIED OR DUPLICATED WITHOUT THEIR CONSENT.

job no. 05-068
 date issued
 AUG 15, 2008
 date revised
 10-24-08 CITY COMMENTS
 12-4-08 CITY COMMENTS
 12-24-08 CITY COMMENTS

drawn by SWR
 checked by SWR
 sheet no.

C29.0
 DETAILS