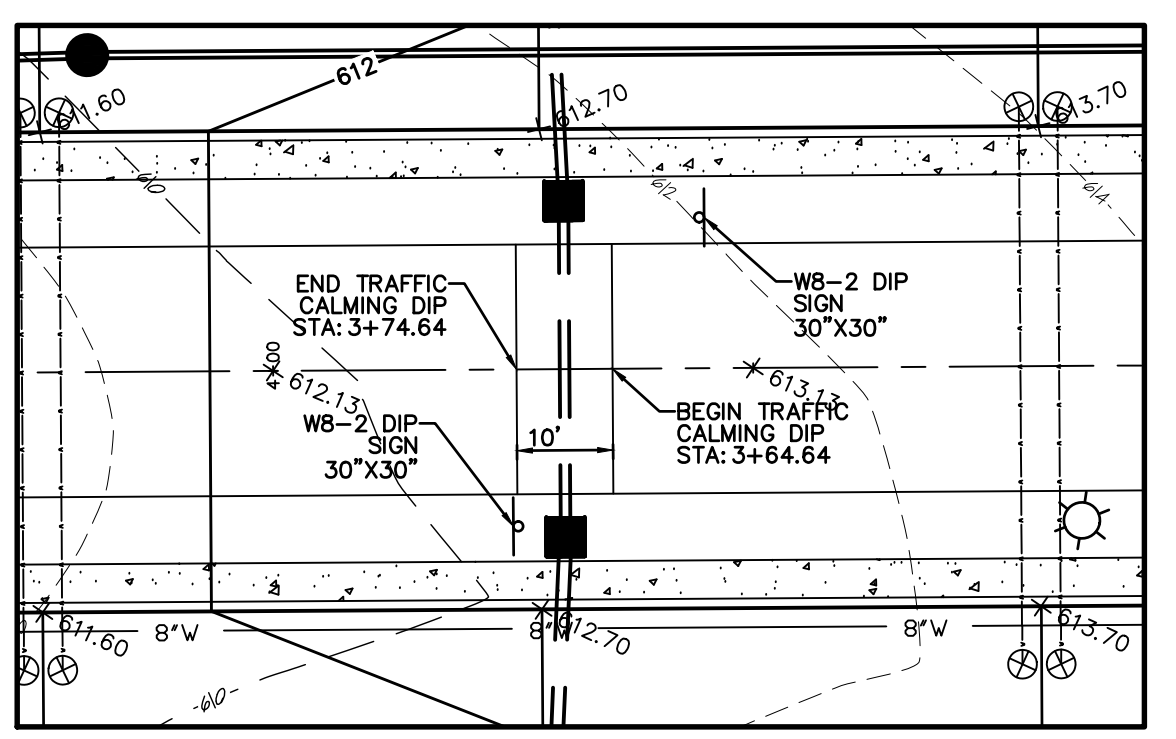


INTERSECTION DETAIL
SCALE: 1" = 20'

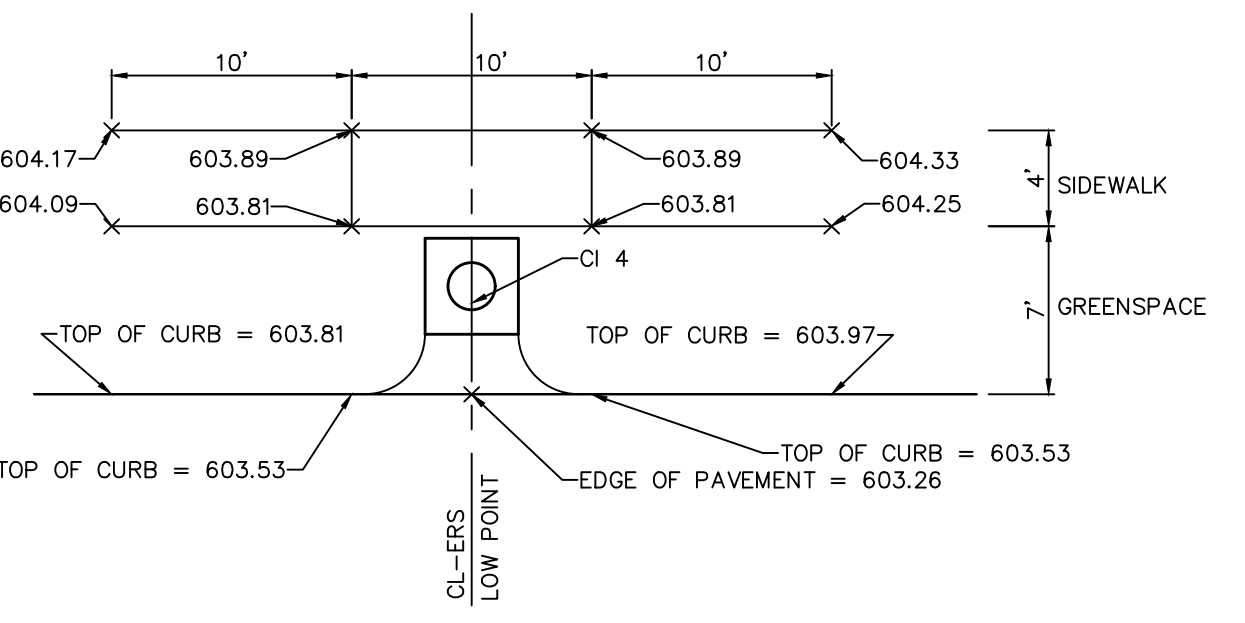
NOTE:
ALL ELEVATIONS ARE TO TOP OF CURB UNLESS OTHERWISE NOTED.
TP=TOP OF PAVEMENT

WARPING DETAIL
SCALE: 1" = 20'

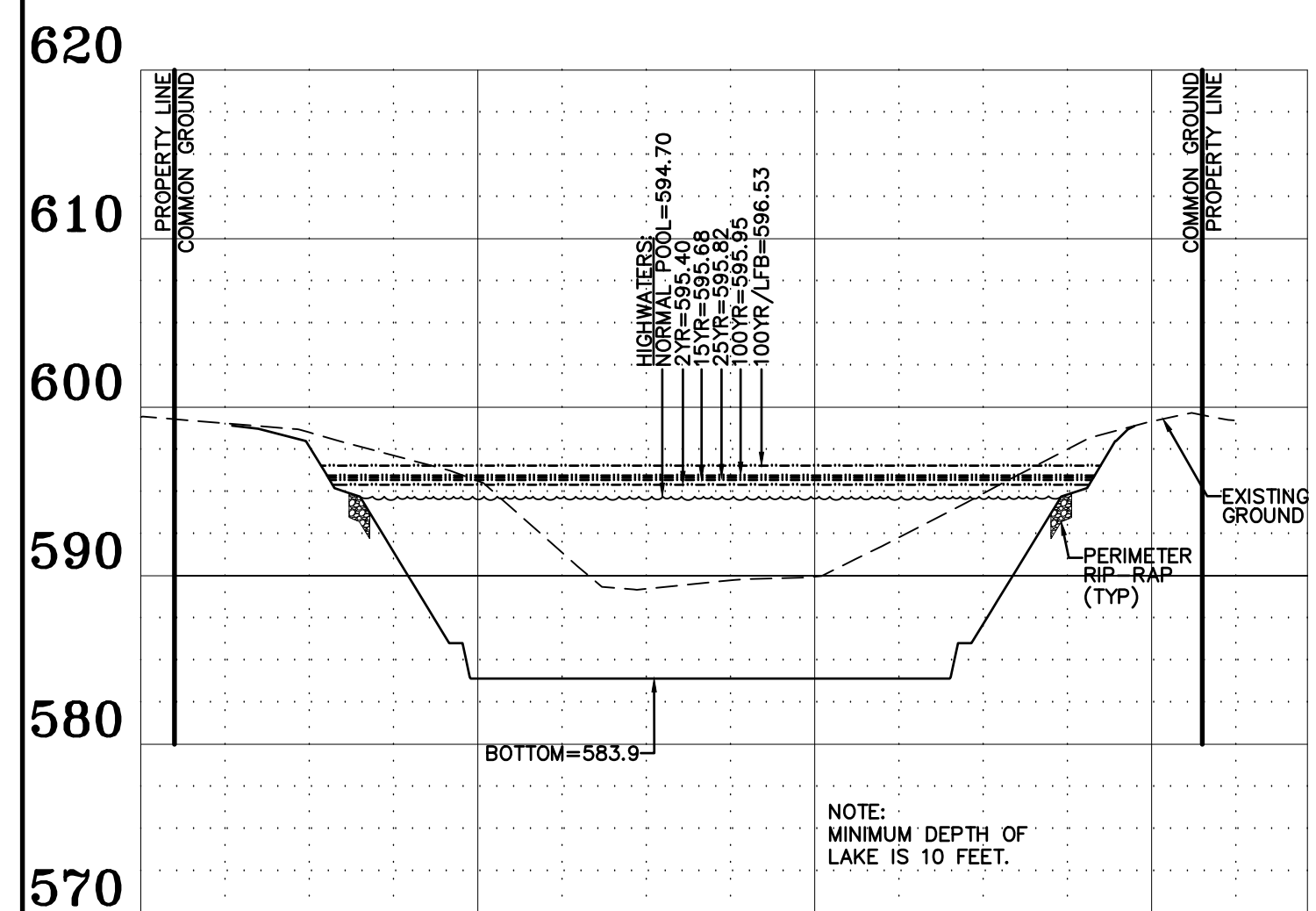
NOTE:
ALL ELEVATIONS ARE TO TOP OF CURB UNLESS OTHERWISE NOTED.
TP=TOP OF PAVEMENT



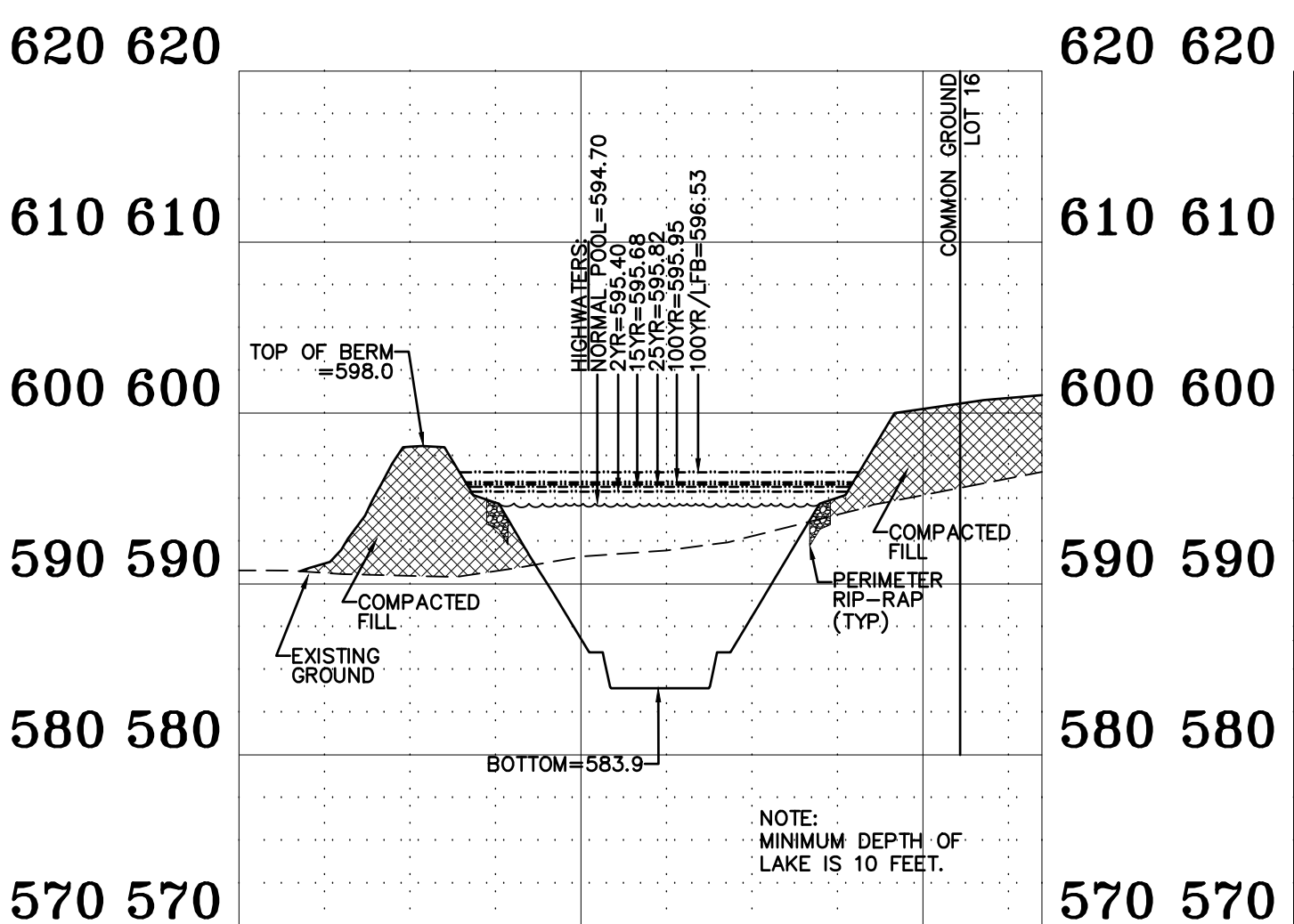
DIP DETAIL
SCALE: 1" = 20'



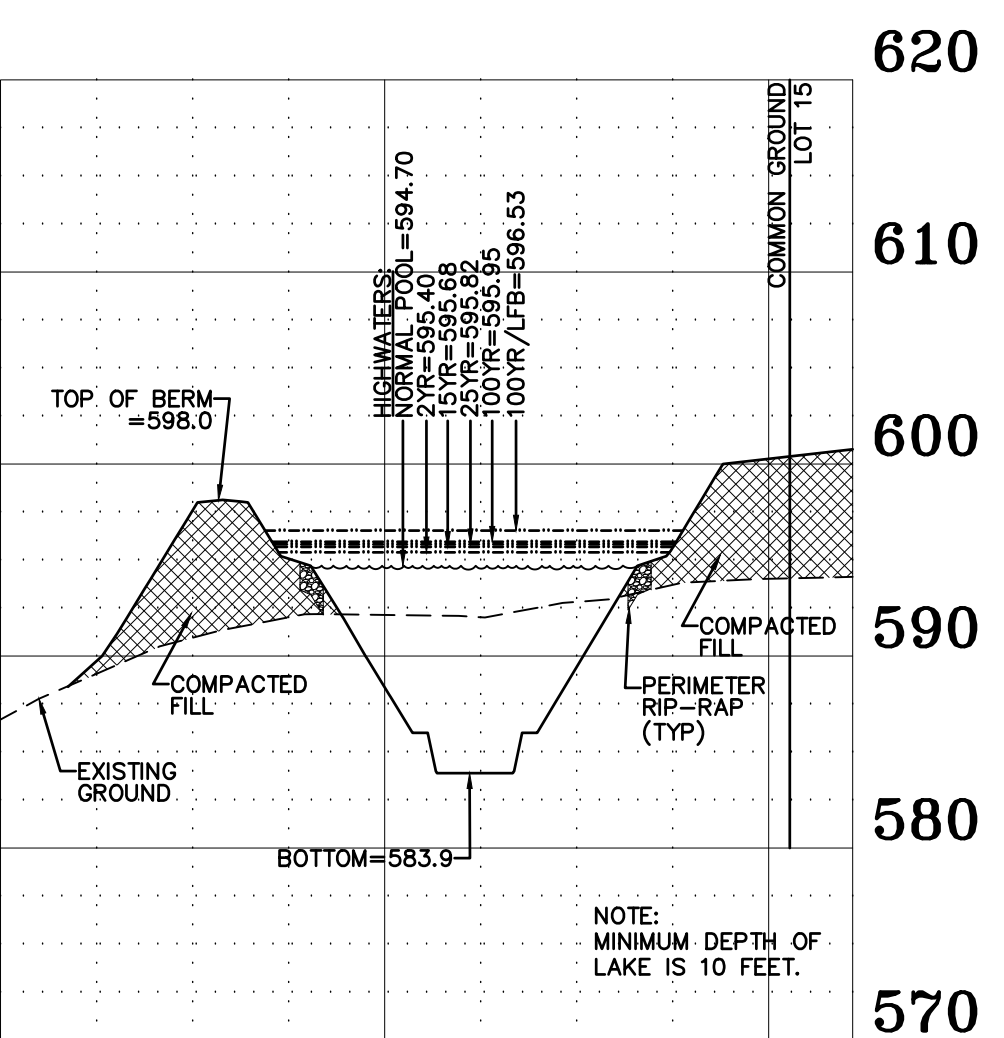
CI 4 ERS SIDEWALK DETAIL
NOT TO SCALE



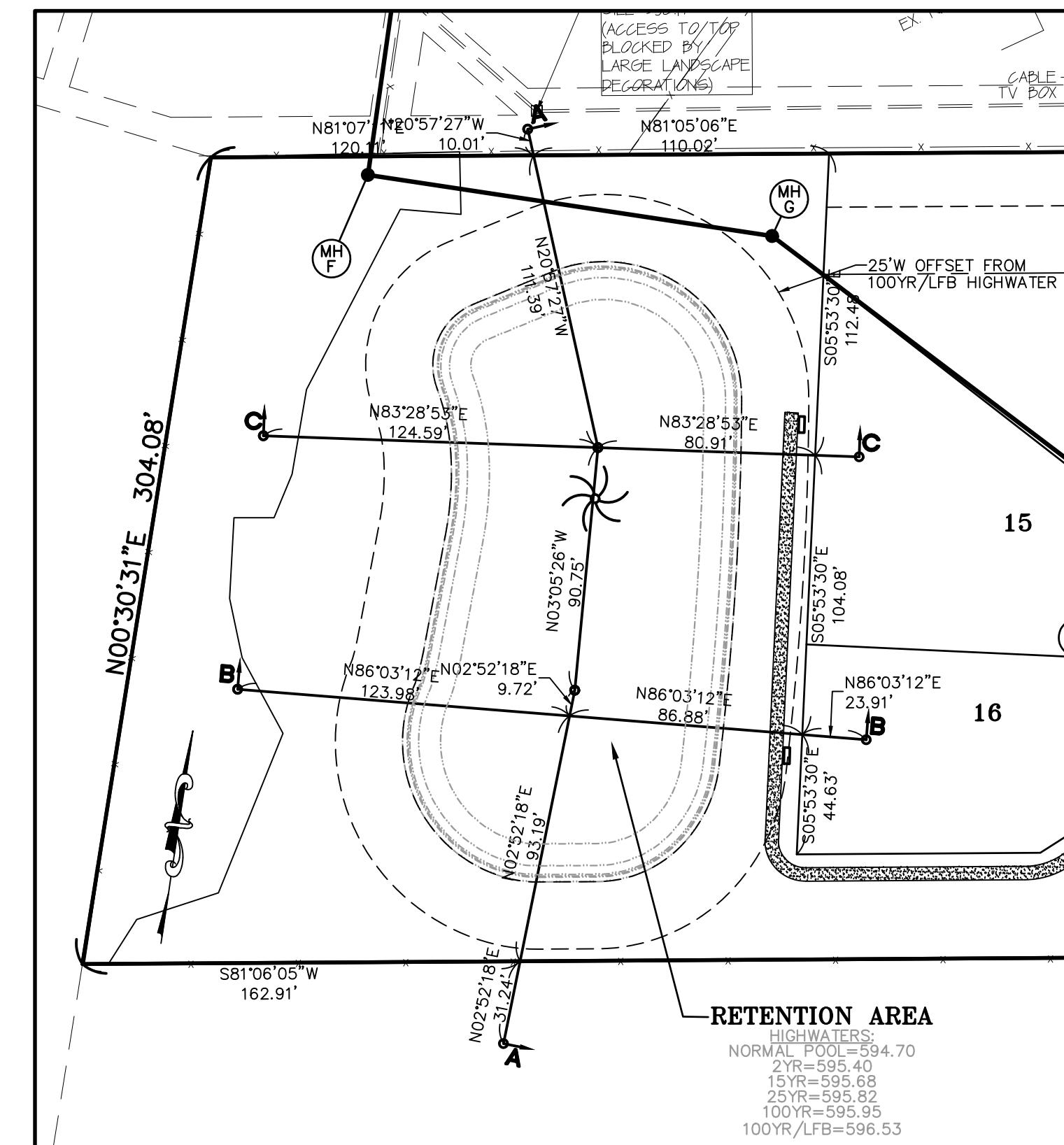
LAKE SECTION A-A
SCALE: 1" = 50'
HORIZ. 1" = 50'
VERT. 1" = 10'



LAKE SECTION B-B
SCALE: 1" = 50'
HORIZ. 1" = 50'
VERT. 1" = 10'



LAKE SECTION C-C
SCALE: 1" = 50'
HORIZ. 1" = 50'
VERT. 1" = 10'



LAKE X-SECTION DETAIL
SCALE: 1" = 50'

PROJECT TITLE:
SOMMERSET ESTATES

ENGINEERING PLANNING SURVEYING
221 Point West Blvd.
St. Charles, MO 63301
636-928-5552
FAX 636-928-1718

DISCLAIMER OF RESPONSIBILITY
I hereby specify that the documents intended to be authorized by my seal are limited to this sheet, and I hereby disclaim any responsibility for all other drawings, specifications, estimates, reports or other documents or instruments relating to or intended to be used for any part or parts of the architectural or engineering project or survey.

JEFFREY B. SIMMONS
PROFESSIONAL ENGINEER
10/11/21

JEFFREY B. SIMMONS
CIVIL ENGINEER
2007030831

REVISIONS	
09/02/21	PWSD#2 & DUCKETT COMMENTS
09/10/21	PWSD#2 COMMENTS
09/27/21	CITY COMMENTS
10/11/21	CITY COMMENTS

Developer / Owner:
KAPB, L.L.C.
410 Crestview Drive
O'Fallon, MO 63366
636-272-4200

STREET PROFILE, LAKE X-SECTIONS, WARPING AND INTERSECTION DETAILS

P+Z No. #21-003778
Approval Date: 09/23/2021
City No. RSP21-000005

Page No.
10 of 23