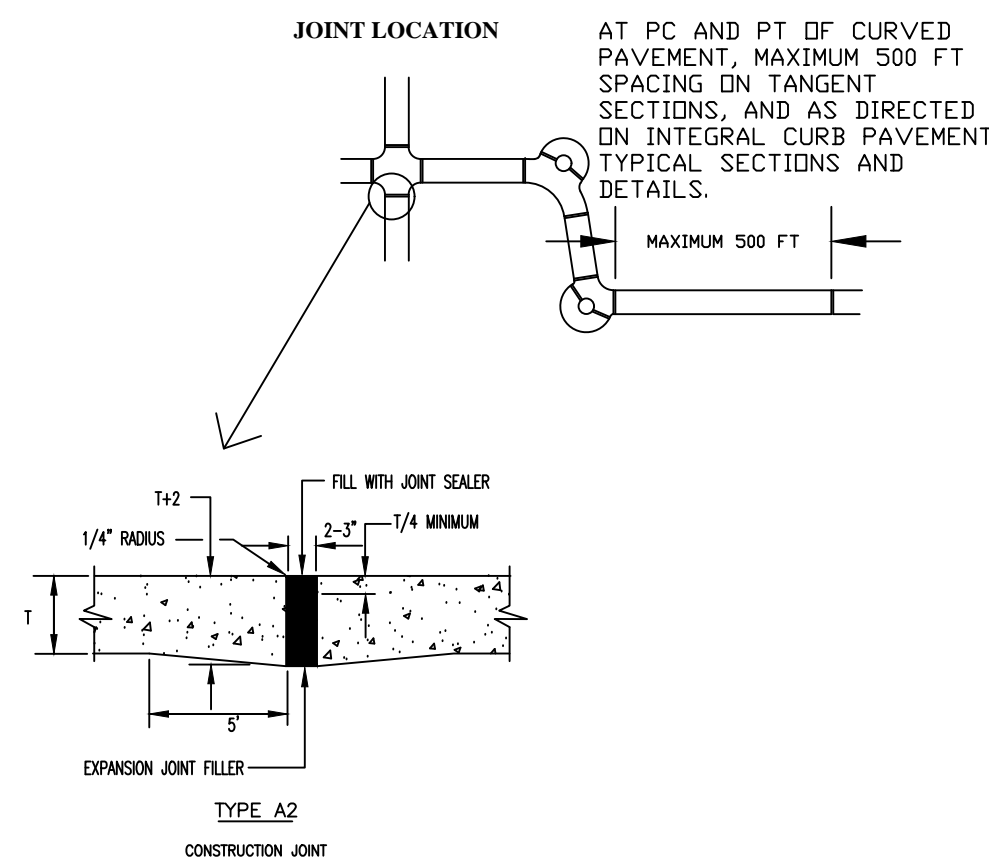


- NOTES:
- All driveway entrances shall be six (6) inches P.C.C. in depth from the curb to the property line.
 - All driveway approaches constructed in conjunction with sidewalk shall give the appearance that the sidewalk is continuous. That portion of the driveway approach that doubles as a sidewalk shall have a one-fourth (1/4) inch per foot cross slope the same as the abutting sidewalk.
 - A two (2) inch expansion joint is required between the street and driveway approach. One (1) additional two (2) inch expansion joint is required between the garage floor and the termination of the driveway.

CITY OF O'FALLON
ENGINEERING DEPARTMENT
O'FALLON, MISSOURI

Integral Curb Detail
"B" at Driveway

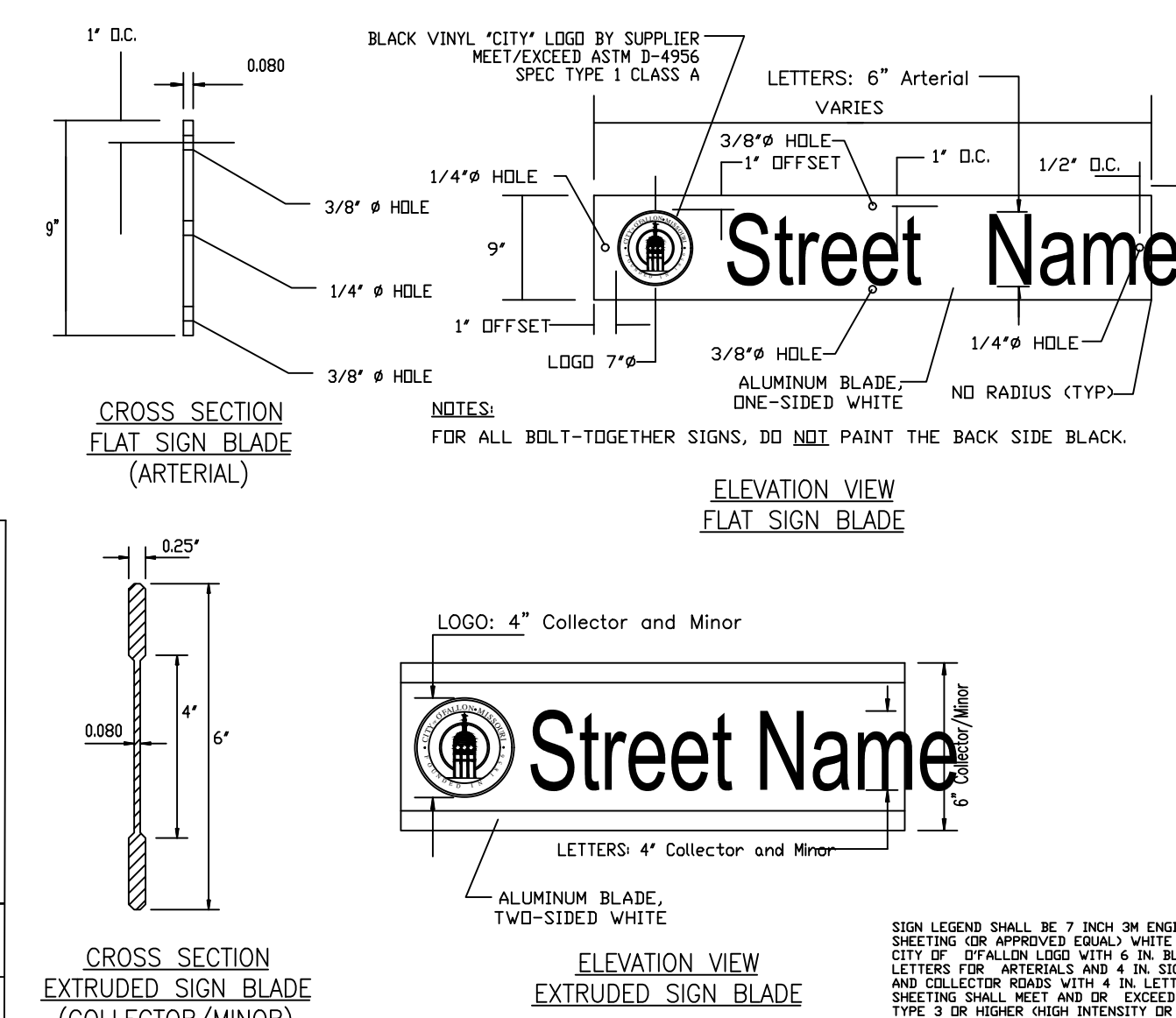
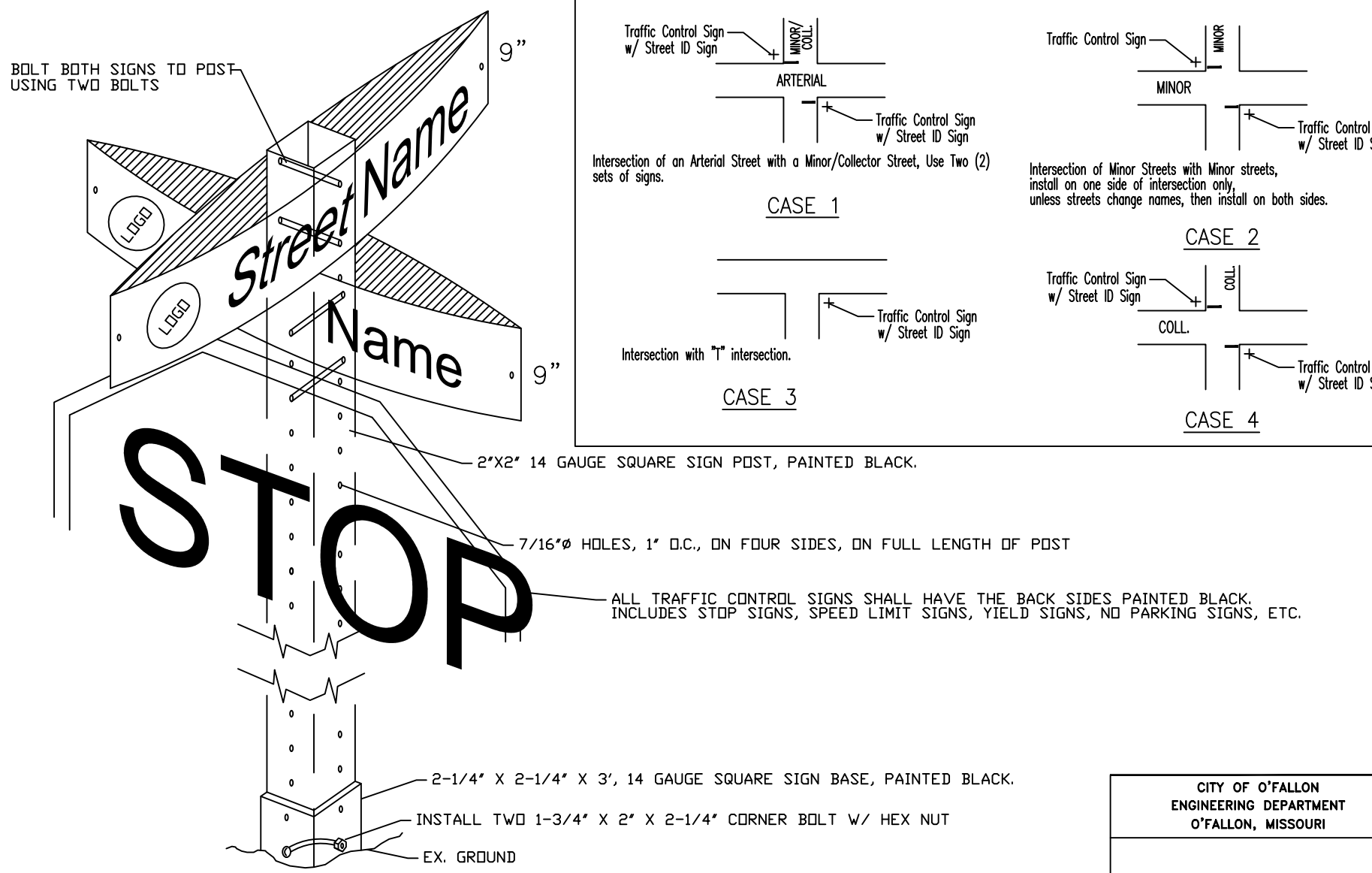
SECTION NO. 405.210 (G)



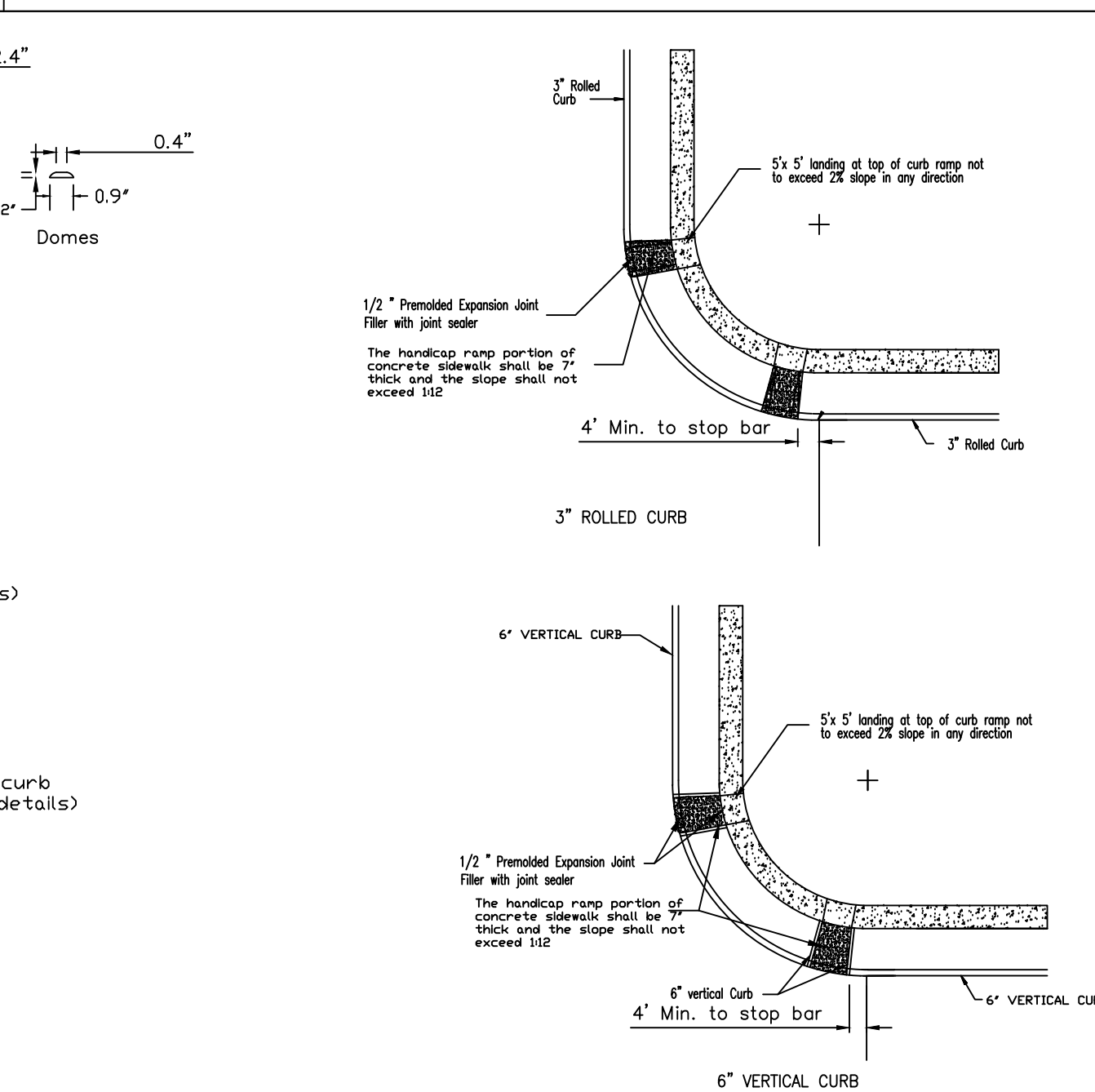
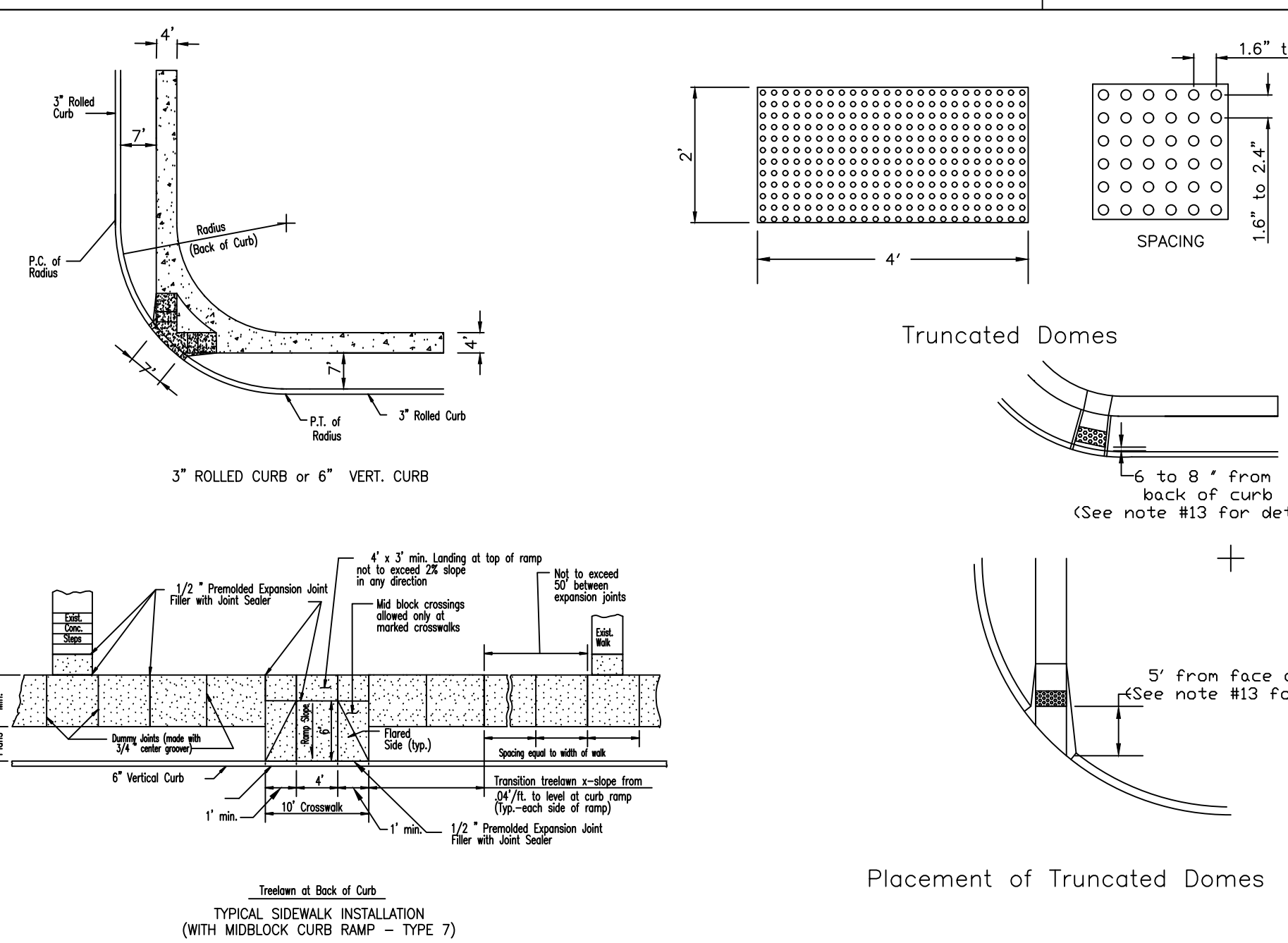
- NOTES:
- JOINT FILLER COMPOSED OF CELLULAR FIBERS, ASTM D-1751, MAY BE USED AT DRIVEWAY, SIDEWALK, AND SEWER INLET AND MANHOLE LOCATIONS.
 - SEE "INTEGRAL CURB DETAIL "B" AT DRIVEWAYS" FOR EXPANSION JOINT REQUIREMENTS AT DRIVEWAY CONNECTIONS TO THE STREET AND THE GARAGE.

CITY OF O'FALLON
ENGINEERING DEPARTMENT
O'FALLON, MISSOURI

PAVEMENT CONSTRUCTION
DETAIL

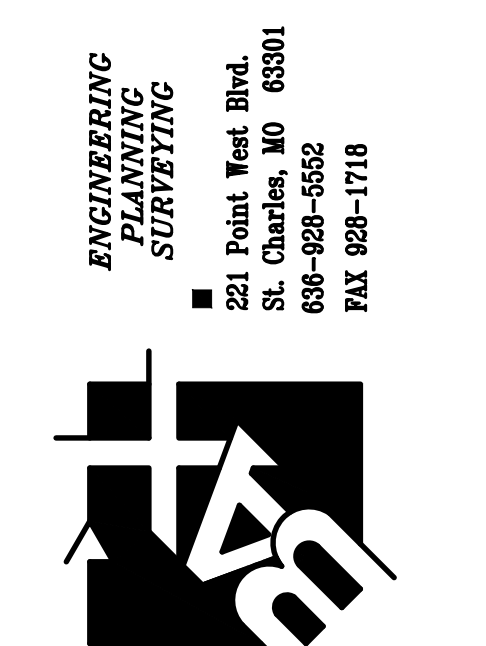


- GENERAL NOTES:
- ALL SIGN POST AND BACK OF SIGNS THAT ARE TO BE PAINTED BLACK SHALL USE A PAINT SYSTEM THAT PROVIDES A MINIMUM 7 YEAR LIFE EXPECTANCY.
 - MAY USE:
 - "CARBOLINE RUSTPRO" BASE AT 1-2 MILS THICK.
 - "CARBOLINE 870 50" MELT-AWAY AT 3-5 MILS THICK.
 - "CARBOLINE 135 HP" TOP COAT, OR
 - AN ELECTROSTATIC APPLIED, BLACK POWDER COATED AND BAKED ON PAINT SYSTEM AT 2-3 MILS THICKNESS, OR
 - APPROVED EQUIVALENT.
 - ALL SIGN LOCATIONS AND SIZES MUST BE APPROVED BY THE ENGINEERING DIVISION PRIOR TO INSTALLATION.
 - STREET NAME SIGN PLATES SHALL BE 9 INCHES WIDE, 6 INCHES HIGH, AND 1/4 INCH THICK. ALL LETTERS SHALL BE 4 INCHES HIGH, 1/4 INCH WIDE, AND 1/4 INCH DEEP. ALL LETTERS SHALL BE 4 INCHES HIGH, 1/4 INCH WIDE, AND 1/4 INCH DEEP. ALL LETTERS SHALL BE 4 INCHES HIGH, 1/4 INCH WIDE, AND 1/4 INCH DEEP.
 - ALL MINOR AND COLLECTOR ROAD TYPICAL LENGTHS FOR MINOR AND COLLECTOR SIGNS SHALL BE 24, 30, 36 INCH LENGTHS OR LONGER AS NECESSARY TO ACCOMMODATE STREET NAME.
 - SIGN LEGEND SHALL BE 7 INCH ON ENGINEER GRADE SHEETING (OR APPROVED EQUAL) WHITE REFLECTIVE WITH 6 IN BLACK NON-REFLECTIVE LETTERS FOR ARTERIALS AND 4 IN SIGN LEGEND FOR MINOR AND COLLECTOR SIGNS WITH 4 IN LETTERS. ALL REFLECTIVE SHEETING SHALL MEET AND EXCEED ASTM D 4956 SPEC TYPE 3 OR HIGHER HIGH INTENSITY OR DIAMOND GRADE.
 - "CLEARVIEW" FONT SHALL BE USED ON ALL STREET SIGNS.
 - SIGN POSTS SHALL BE HEAVY 1/2" CHANNEL (2 LBS/FT) PAINTED BLACK STEEL POSTS FOR COLLECTOR/MINOR STREETS. ARTERIAL STREETS SHALL HAVE 2" SQUARE POSTS WITH BREAKAWAY ASSEMBLY.
 - SIGN POSTS SHALL EXTEND A MINIMUM OF 30 INCHES IN THE GROUND AND PLUM.
 - THE CONTRACTOR SHALL BE RESPONSIBLE FOR VERIFICATION OF UNDERGROUND UTILITIES AND STRUCTURES, SHOWN OR NOT SHOWN, PLEASE CONTACT CITY FOR LOCATION OF CITY UTILITIES NOT FOUND BY PRIVATE SERVICES.
 - SIGNS SHALL NOT CREATE A SITE DISTANCE PROBLEM FOR TRAFFIC. WITH PEDESTRIAN TRAFFIC, SIGN SPEED LIMIT SIGNS MUST BE AT LEAST 15 FEET FROM A SUBDIVISION ALONG THE LID LINE BETWEEN FIRST AND SECOND LANE AND APPROXIMATELY EVERY TWO THOUSAND (2,000) FEET THEREAFTER. ALSO, EVERY CONNECTING SIDE STREET MUST HAVE ONE-SIDED LIMIT SIGN APPROXIMATELY FIFTY FEET FROM INTERSECTION AND APPROXIMATELY EVERY TWO THOUSAND FEET (2,000) THEREAFTER.
 - ALL SIGNS UNLESS OTHERWISE STATED, SHOULD BE CONSTRUCTED AND INSTALLED PER MUTCS.



- GENERAL NOTES
- Do not scale drawing. Follow dimensions.
 - Sidewalks and sidewalk curb ramps shall be constructed in accordance with these details and the current approach Americans with Disabilities Act Accessibility Guidelines (ADAAG).
 - Minimum sidewalk width along 6" vertical curb shall be 5 feet. Minimum sidewalk width along 3" rolled curb shall be 4 feet.
 - Maximum sidewalk cross slope 0.02%/ft.
 - All sidewalk sections shall be 4" thick, except where indicated as 7" thick by shaded portions shown on details.
 - Where curb ramp meets pavement, butts are not permitted.
 - If integral concrete curb is constructed, strike a dummy joint across bottom of ramp at curb line. If concrete curb is dowel-on, block out pavement to provide full depth curb slopes ramp from outer point of curb taper to outer point of curb taper.
 - For pavement longitudinal and transverse joints and dowel and tie bar requirements and dimensions, refer to the Pavement Construction Details for Joints and Curbs.
 - For roadway cross slopes, pavement types, and thicknesses, refer to Standard Typical Sections.
 - The intersection of two sidewalks or the intersection of a sidewalk and a driveway may serve as a wheelchair passing space on sidewalks less than 5 feet wide.
 - All curb ramps shall have a detectable warning complying with Americans with Disabilities Act Accessibility Guidelines (ADAAG).
 - All ramps must line up with the corresponding ramp on the other side of the street or intersection.
 - All truncated domes shall run parallel to the road that it's crossing.
 - Truncated warning domes shall not be stamped and will be a ADA approved product.
- CITY OF O'FALLON
ENGINEERING DEPARTMENT
O'FALLON, MISSOURI
- PAVEMENT CONSTRUCTION DETAILS
CONCRETE SIDEWALK
AND CURB RAMPS

PROJECT TITLE:
**SOMMERSET
ESTATES**



DISCLAIMER OF RESPONSIBILITY
I hereby specify that the documents intended to be authorized by my seal are limited to this sheet, and I hereby disclaim any responsibility for all other drawings, specifications, estimates, reports or other documents or instruments relating to or intended to be used for any part or parts of the architectural or engineering project or survey.

REVISIONS

09/02/21	PWSD#2 & DUCKETT COMMENTS
09/10/21	PWSD#2 COMMENTS
09/27/21	CITY COMMENTS
10/11/21	CITY COMMENTS

Developer / Owner:
KAPB, L.L.C.
410 Crestview Drive
O'Fallon, MO 63366
636-272-4200

P+Z No. #21-003778
Approval Date: 09/23/2021
City No. RSP21-000005

Page No. 19 of 23

ENGINEERS SEAL DOES NOT APPLY TO CITY OF O'FALLON DETAILS ON THIS SHEET.